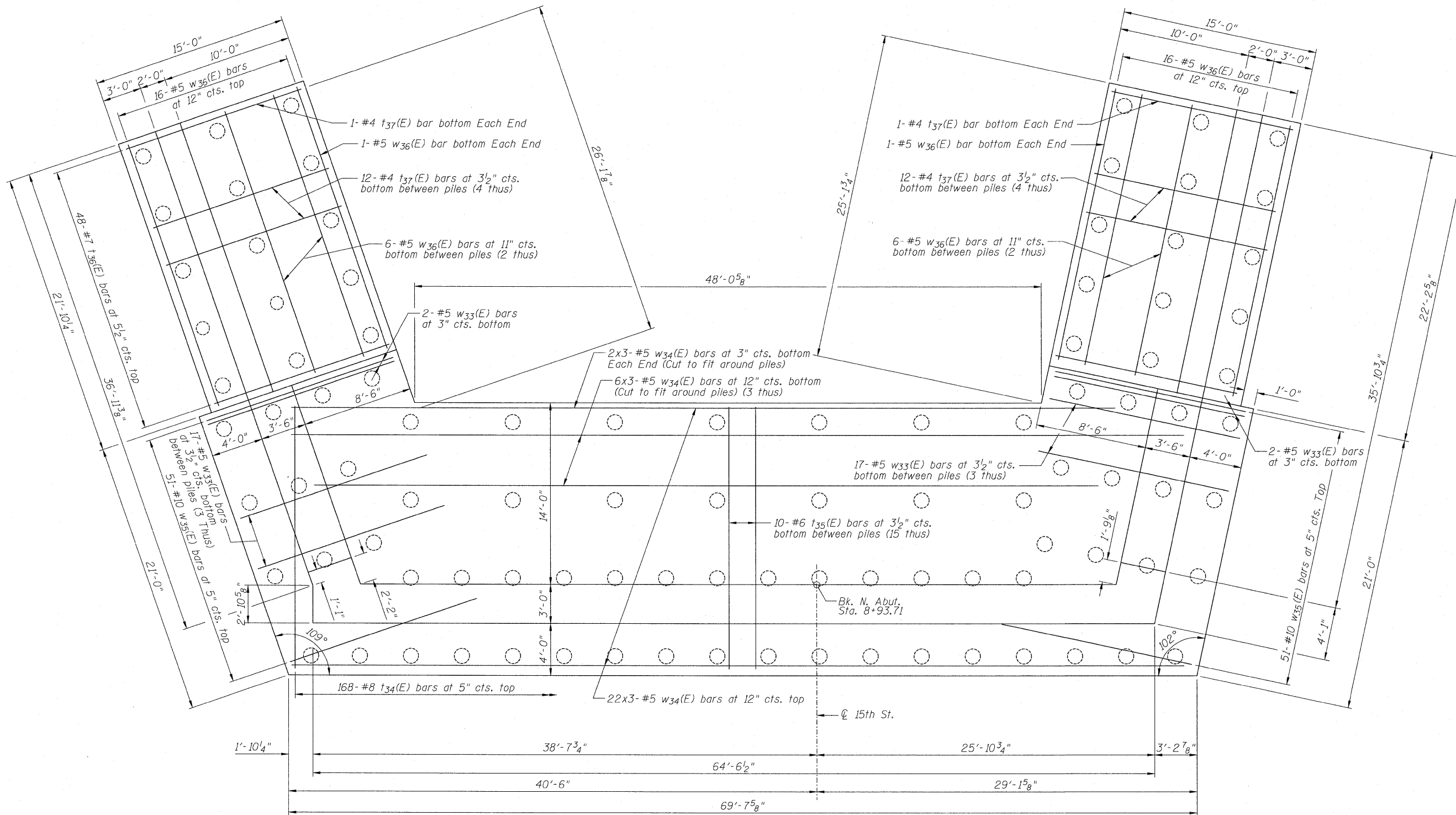


STATE OF ILLINOIS
DEPARTMENT OF TRANSPORTATION



NORTH ABUTMENT FOOTING PLAN

MIN. BAR LAPS
#5 bar = 2'-2"

Notes:

Bars indicated thus: 2x3- #5 etc. indicates 2 lines of bars with 3 lengths per line.

See Sheet 35 of 44 for Bill of Material.

ZROKA engineering
Zroka Engineering, P.C.
4216 North Hermitage
Chicago, IL 60613

DESIGNED	LAS
CHECKED	JLA
DRAWN	SAW
CHECKED	LAS

3-31-2010

NORTH ABUTMENT FOOTING PLAN
STRUCTURE NO. 082-0377

SHEET NO. 32 44 SHEETS	F.A.I. RTE.	SECTION	COUNTY	TOTAL SHEETS	SHEET NO.
	64	82-1-2HB	ST. CLAIR	345	239
			CONTRACT NO. 76C49		
ILLINOIS FED. AID PROJECT					

REVISED 4/15/2010