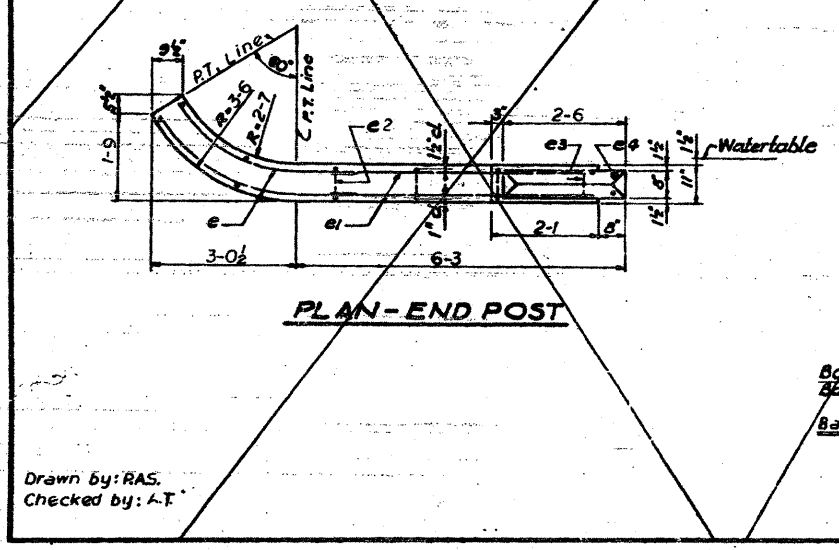
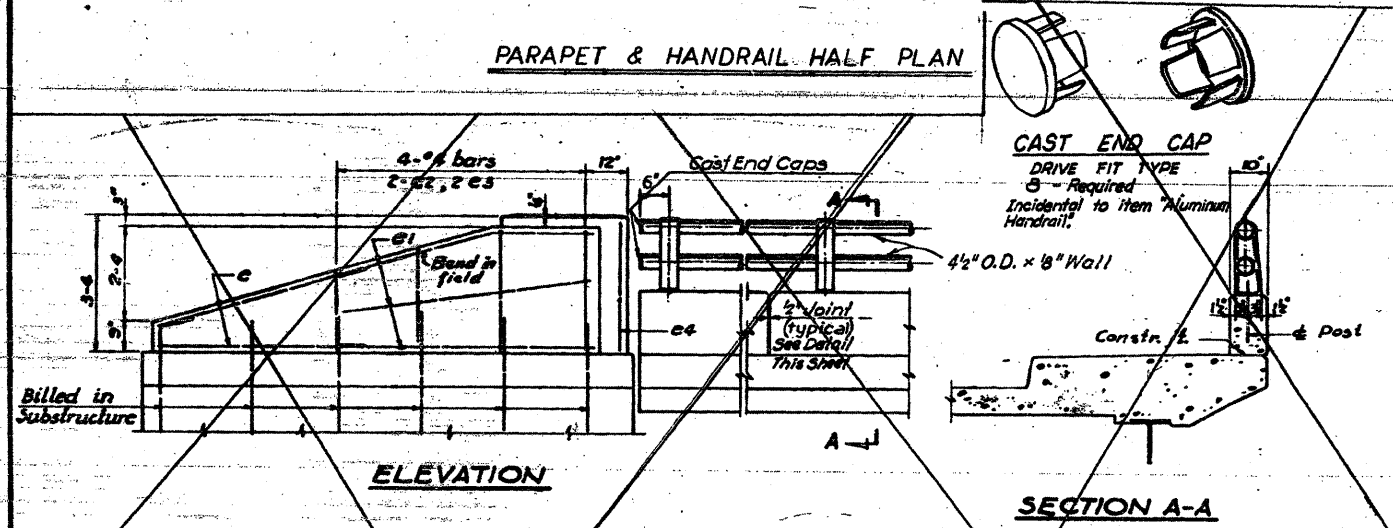
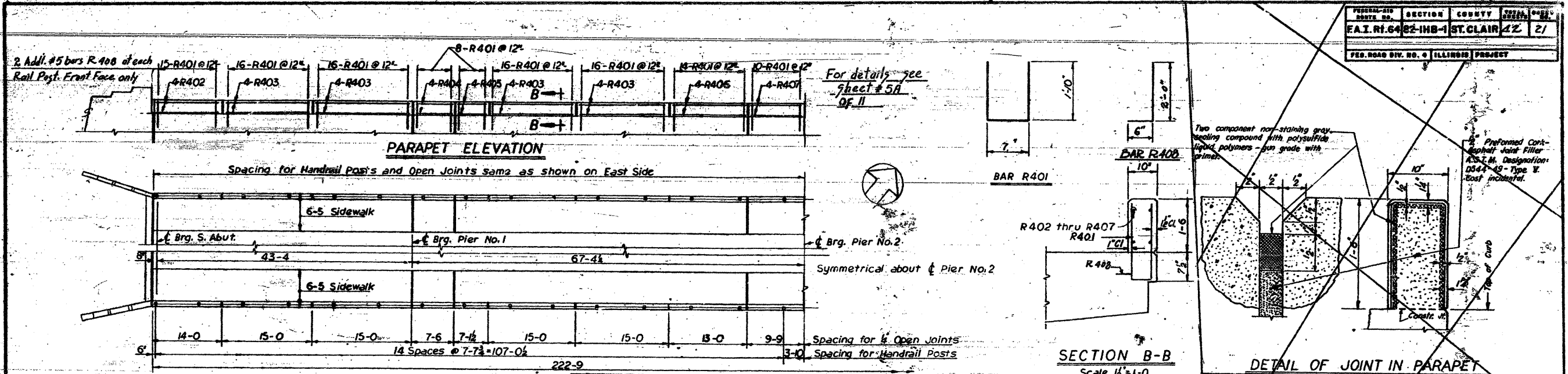


FOR INFORMATION ONLY



BAR LIST FOR END POSTS

Bar	No.	Size	Length	Shape
e	16	#4	4-6	—
e1	24	#4	4-11	—
e2	8	#4	4-0	—
e3	8	#4	6-6	—
e4	8	#4	2-11	—

NOTES:

All posts shall be placed normal to parapet.
 All posts shall be of Aluminum conforming to A.S.T.M. Specification B-108 alloy 5G-70B-T6.
 All Rail Tubing shall be of Aluminum conforming to A.S.T.M. Specification B-235 alloy 6S-11A-T6.
 Alclad washers shall be made from sheet conforming to A.S.T.M. Specification B-209 alloy clad CG-42A-T4.
 Rail Tubing may extend a maximum of 3 panels.
 For material composition of Prefabricated Pad, See Art. 54.9(f) (Bearings and Anchorage), of the 3rd Specs.
 Set Screws shall be of Aluminum conforming to A.S.T.M. Specification B-211 alloy CG-42A-T4.

BAR LIST FOR PARAPETS

BAR	NO.	SIZE	LENGTH	SHAPE
5R401	476	#5	4'-3"	—
5R402	16	#5	13'-6"	—
5R403	64	#5	14'-8"	—
5R404	16	#5	7'-2"	—
5R405	16	#5	6'-9"	—
5R406	16	#5	12'-8"	—
5R407	16	#5	9'-5"	—
5R408	120	#5	2'-6"	—

BILL OF MATERIAL

Class "X" Concrete	Cu Yds.	21.1
Reinforcement Bars	Lbs.	4390
Alum. Rail Type C	Lbs.	446

* see sheet 5B for alternate.

STATE OF ILLINOIS
 DEPARTMENT OF PUBLIC WORKS & BLDGS
 DIVISION OF HIGHWAYS
 ALUMINUM HANDRAIL
 AND PARAPET DETAILS

15TH ST.
 OVER F.A.I. R. 64
 STATION 88 + 85.50
 F.A.I. R. 64 ST. CLAIR CO. SECTION 82-IN

N. W. LOCHNER, INC.
 CONSULTING ENGINEERS
 CHICAGO, ILLINOIS

SHEET
 5 OF 11

Drawn by: RAS.
 Checked by: A.T.

A.S.A. Reinf. bars from 2010 to 4390 lbs., Cl. X Conc. 23.3 to 21.1 C. Yk.