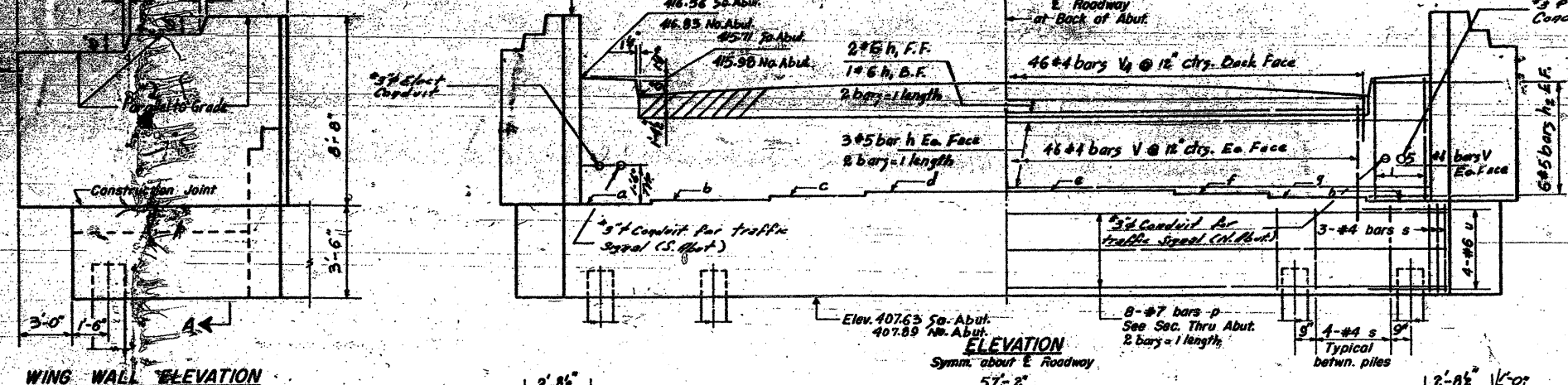


FOR INFORMATION ONLY

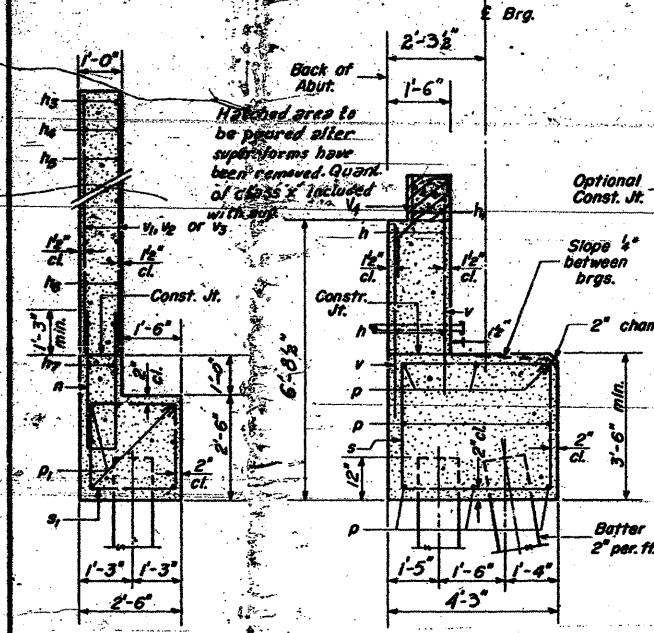
STATE OF ILLINOIS  
DEPARTMENT OF PUBLIC WORKS & BUILDINGS  
DIVISION OF HIGHWAYS

DATE	SECTION	COUNTY	SHEET NO.	TOTAL SHEETS
8-2-1962	82-1HB-1	St. Clair	22	22



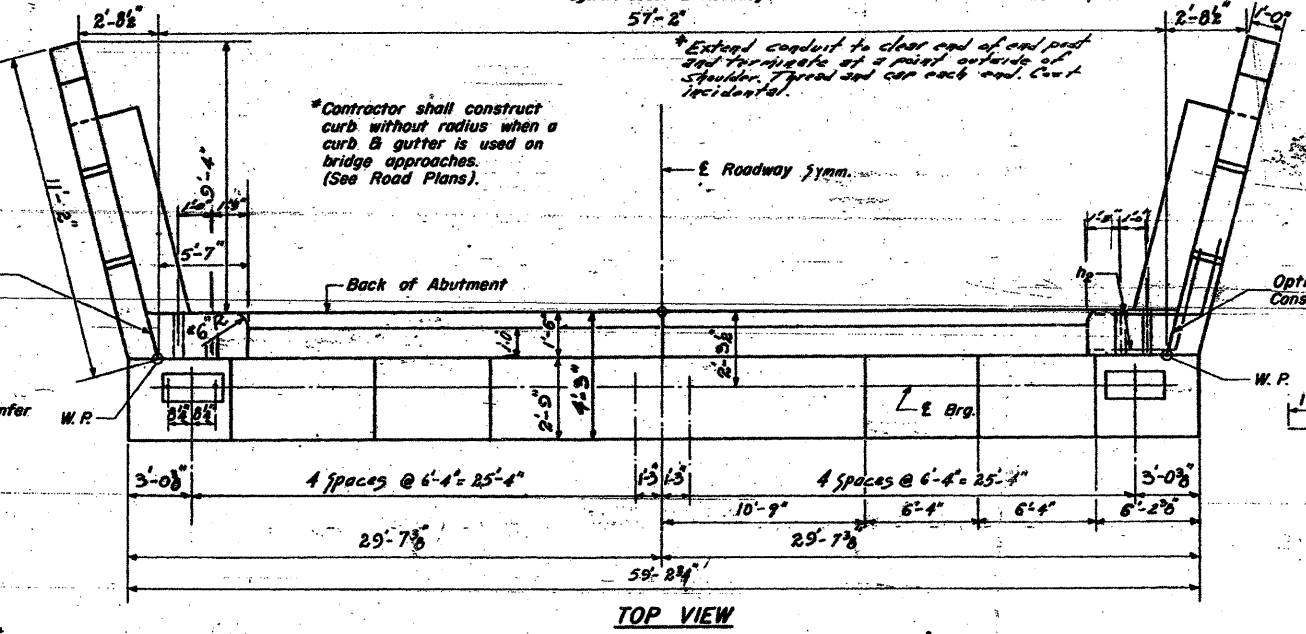
WING WALL ELEVATION  
Dimensions

WING WALL ELEVATION  
Reinforcement

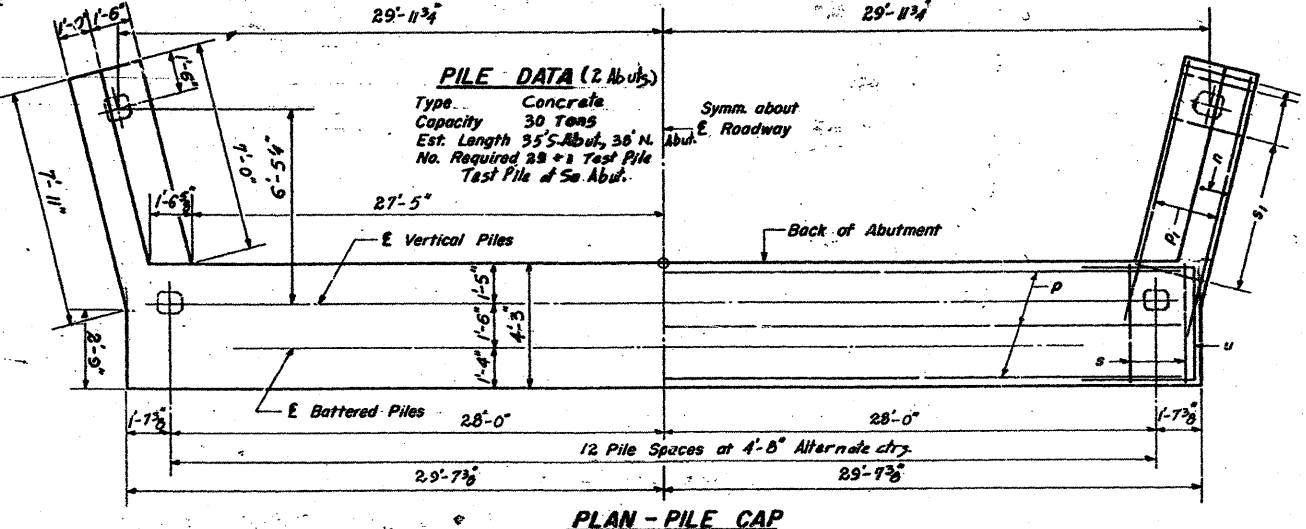


SEC. A-A

SEC. THRU ABUT.



TOP VIEW



PLAN - PILE CAP

**PILE DATA (2 Abut.)**  
Type: Concrete  
Capacity: 30 Tons  
Est. Length: 35' S. Abut., 36' N. Abut.  
No. Required: 28 + 1 Test Pile  
Test Pile at So. Abut.

BRIDGE JET ELEVATIONS

	a	b	c	d	e	f	g	h
So. Abut.	41.13	41.26	41.39	41.51	41.51	41.39	41.26	41.13
No. Abut.	41.39	41.53	41.66	41.77	41.77	41.66	41.53	41.39

DESIGNED	A.S.A.	EXAMINED	
CHECKED	J.M.J.	PASSED	
DRAWN	W.A. Souders, Jr.	APPROVED	
CHECKED			

A-8 7-19-62 Rev. 11-27-62

SEC. B-B

NO. 50 ABUTMENT  
BILL OF MATERIAL

Bar	No.	Size	Length	Shape
h	24	#5	28'-6"	—
h	12	#6	24'-0"	—
h <sub>2</sub>	48	#5	11'-10"	—
h <sub>3</sub>	8	#4	8'-10"	—
h <sub>4</sub>	8	#4	6'-8"	—
h <sub>5</sub>	24	#4	10'-8"	—
h <sub>6</sub>	32	#4	10'-8"	—
h <sub>7</sub>	8	#4	7'-0"	—
n	28	#4	7'-9"	□
p	32	#7	3'-0"	—
p <sub>1</sub>	24	#7	9'-0"	—
s	108	#4	14'-11"	□
s <sub>1</sub>	32	#4	9'-5"	□
u	16	#6	11'-10"	□
v	224	#4	5'-3"	—
v <sub>1</sub>	32	#4	8'-6"	—
v <sub>2</sub>	24	#4	7'-8"	—
v <sub>3</sub>	32	#4	6'-10"	—
v <sub>4</sub>	92	#4	3'-3"	—
Class X Concrete				Cu. Yds. 108.5
Reinforcement Bars				Lbs. 7850
Concrete Piles				Lin. Ft. 1060
Test Piles Concrete				Eq. 1

ABUTMENTS

F.A.I. ROUTE 64 SEC. 82-1HB-1  
ST. CLAIR COUNTY

Revised Class X concrete for abutments (see spec. for Abut. & Ret. Wall)  
8-11-62