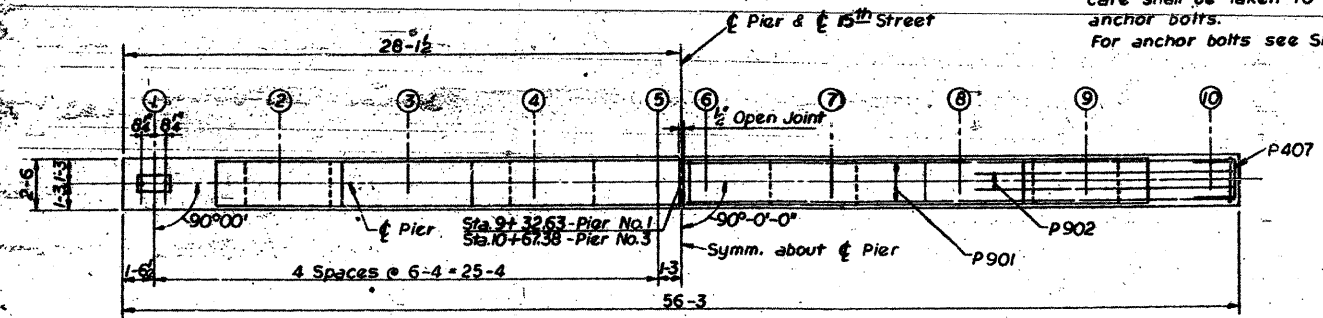


FOR INFORMATION ONLY

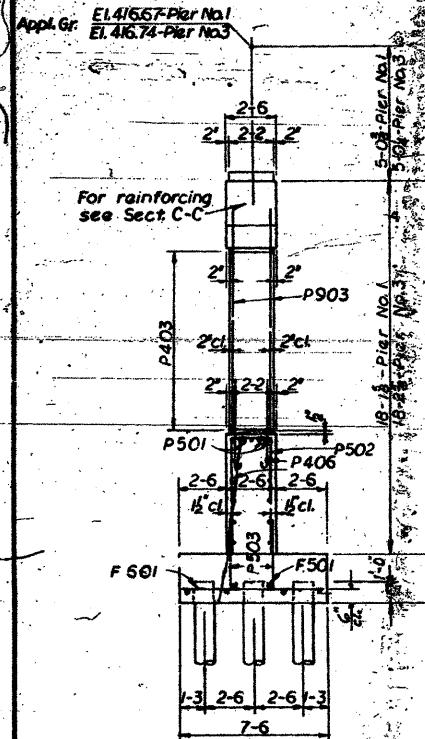
FEDERAL-AID ROUTE NO.	SECTION	COUNTY	TOTAL SHEETS	SHEET NO.
FA.I. RT. 64	82-1HB-1	ST. CLAIR	42	23
FED. ROAD DIST. NO. 4 ILLINOIS PROJECT				

NOTE: In placing reinforcement bars care shall be taken to clear anchor bolts.
For anchor bolts see Sh. No. 4

	a	b	c	d	e	f	g	h
Pier No. 1	411.64	411.77	411.91	412.02	412.02	411.91	411.77	411.64
Pier No. 3	411.72	411.85	411.98	412.10	412.10	411.98	411.85	411.72



TOP PLAN

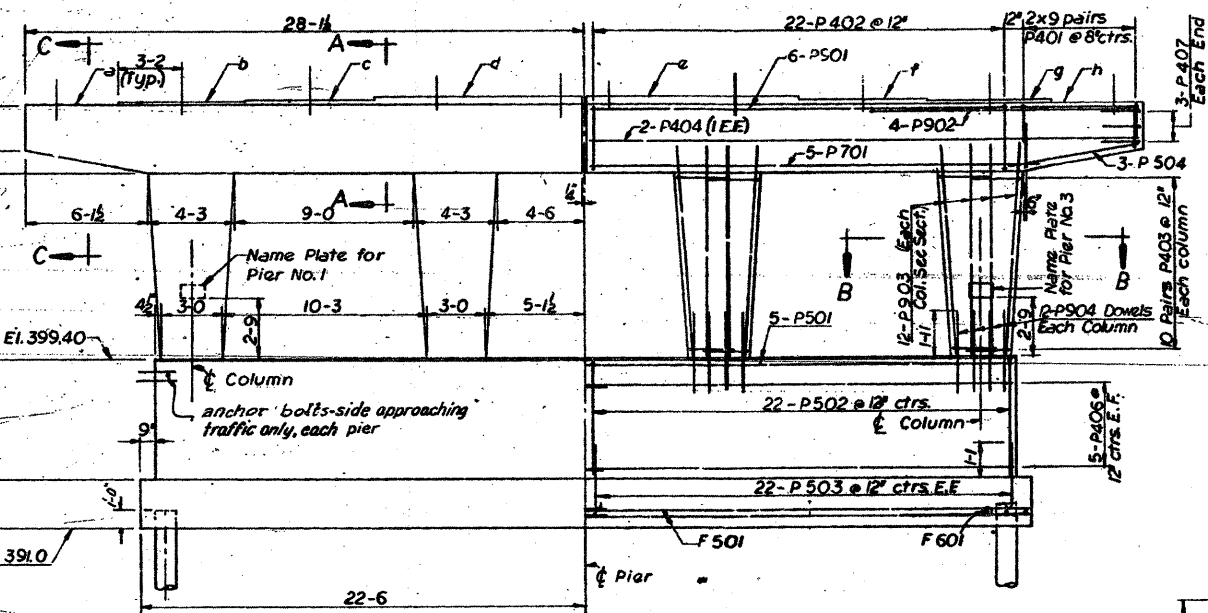


END VIEW

NOTE: All edges to have standard 3/4" chamfer except footing.



Designed by: S.K.
Drawn by: R.A.S.
Checked by: R.N.

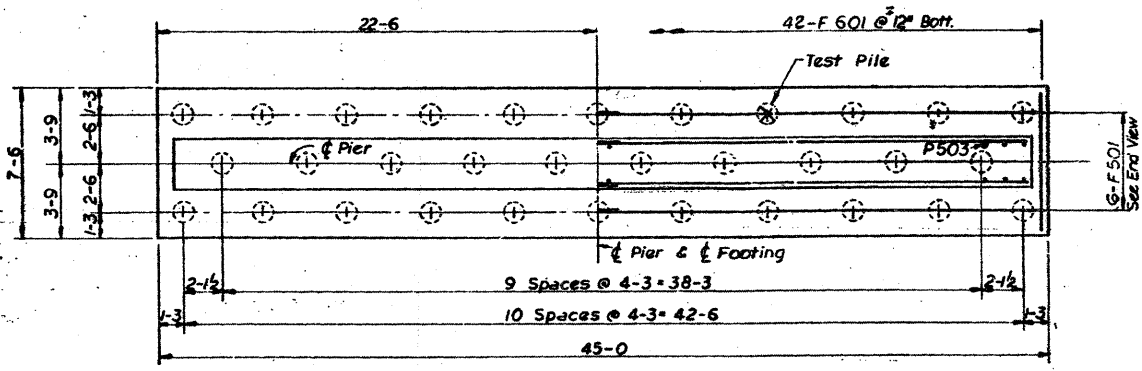


ELEVATION

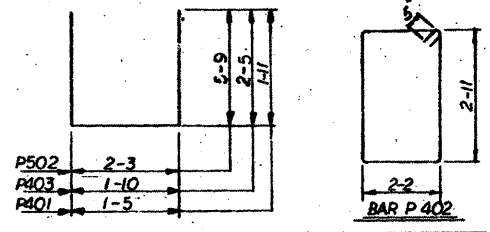
DIMENSIONS

REINFORCEMENT

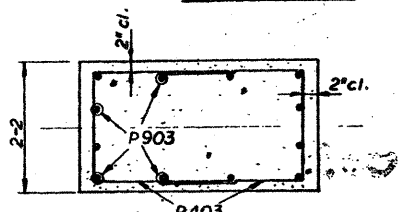
NOTE: Dimensions and Reinforcement symmetrical about Pier.



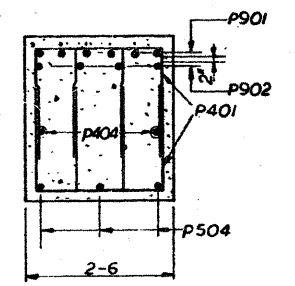
FOOTING PLAN



SECTION A-A



SECTION B-B



SECTION C-C

BAR NO.	NO.	SIZE	LENGTH	SHAPE
7P401	144	#4	5-3	U
7P402	88	#4	11-0	D
7P403	160	#4	6-8	U
7P404	8	#4	27-9	—
7P406	40	#4	22-2	—
7P407	12	#4	7-2	C
7P501	10	#5	43-2	—
7P502	88	#5	13-9	U
7P503	176	#5	3-8	U
7P504	12	#5	6-6	—
7P701	20	#7	21-10	—
7P901	24	#9	27-9	—
7P902	16	#9	14-0	—
7P903	96	#9	11-0	—
7P904	96	#9	5-1	—
7F501	24	#5	22-11	—
7F601	84	#6	7-3	—

Class "X" Concrete	Cu. Yds.	165.1
Reinforcement bars	Lbs.	15,790
Test Piles Timber	Each	2
Crossed Piles	Lin. Ft.	868
Name Plate	Each	2

	PIER NO. 1	PIER NO. 3
Type	Crossed	Crossed
Capacity	20 Tons	20 Tons
Est. Length	14'	14'
No. Required	31	31
Test Pile	1	1

NOTE: For reinforcement bar designation see Note 'A' Sheet No. 3.

STATE OF ILLINOIS
DEPARTMENT OF PUBLIC WORKS & BLDGS.
DIVISION OF HIGHWAYS
PIERS No. 1 AND No. 3
15TH ST.
OVER FA.I. RT. 64
STATION 75 + 85.50
FA.I. RT. 64 ST. CLAIR CO. SECTION 82-1HB-1
H. W. LOCHNER, INC.
CONSULTING ENGINEERS
CHICAGO, ILLINOIS

SHEET 7 OF 11