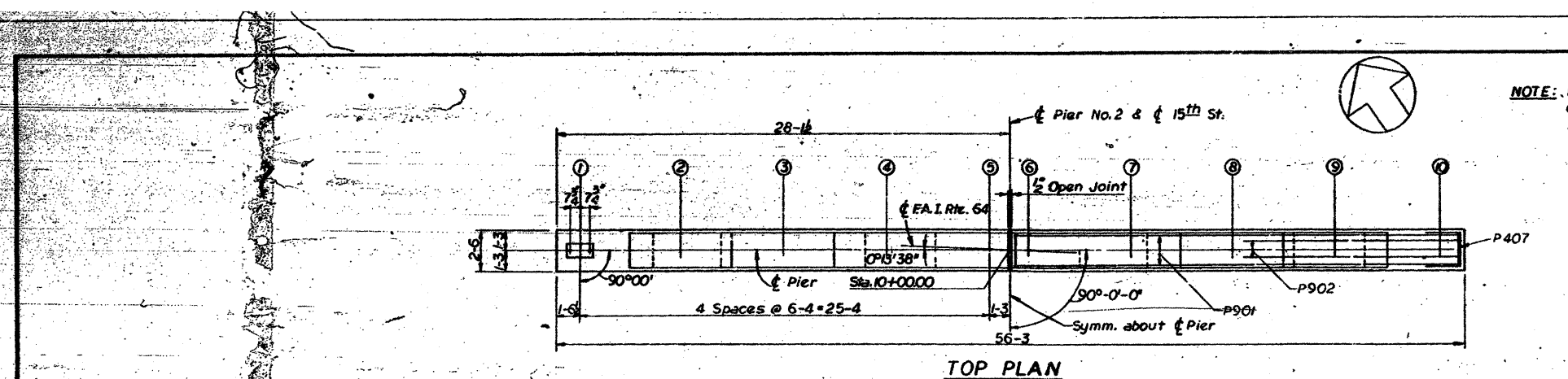


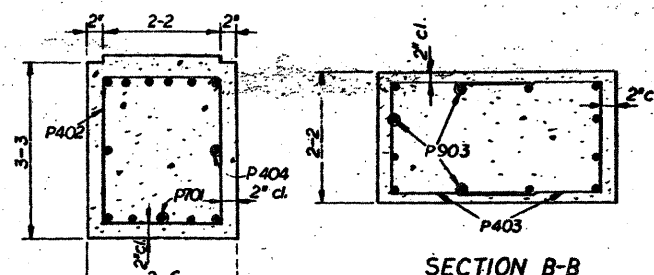
FOR INFORMATION ONLY

| FEDERAL-ROAD DISTRICT NO. | SECTION | COUNTY | TOTAL SHEETS | SHEET NO. |
|--|----------|-----------|--------------|-----------|
| F.A.I. Rte. 64 | 82-1HB-1 | ST. CLAIR | 42 | 24 |
| FED. ROAD DIST. NO. 4 ILLINOIS PROJECT | | | | |

NOTE: In placing reinforcement bars care shall be taken to clear anchor bolts.
For anchor bolts see Sh. No. 4

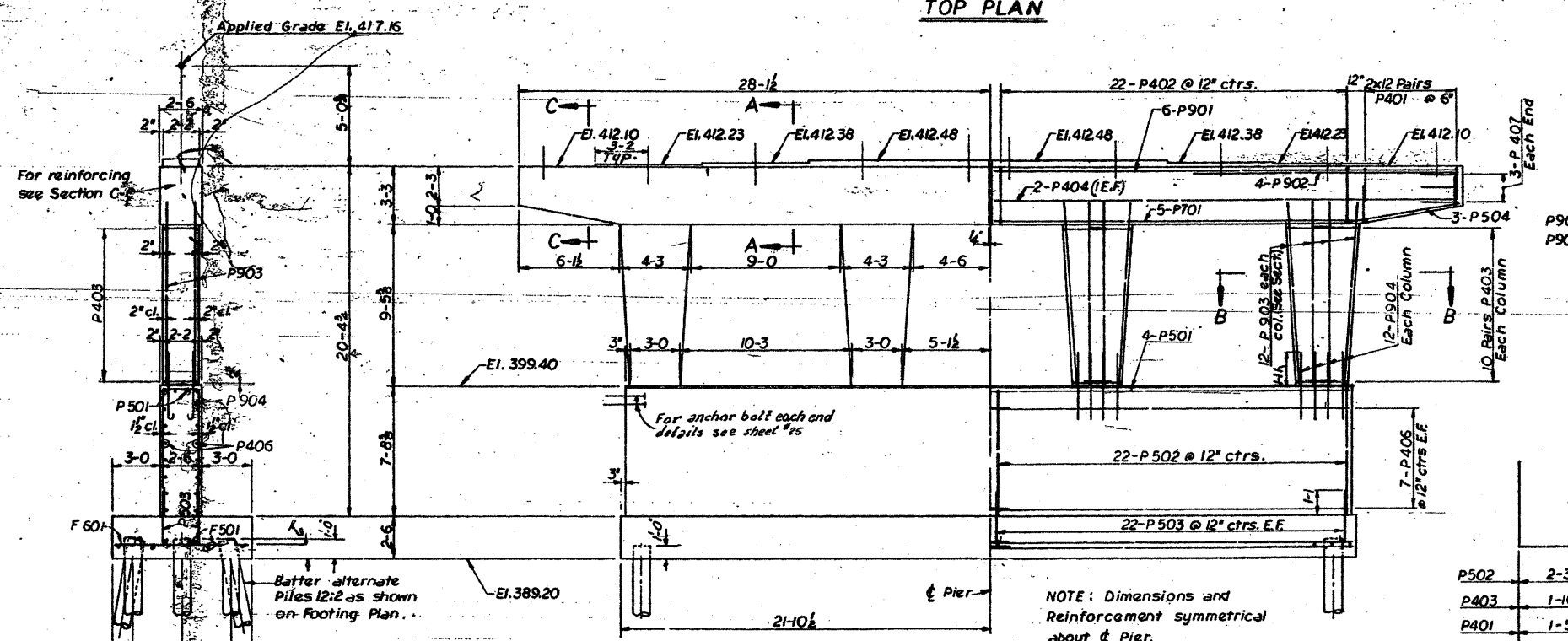


TOP PLAN

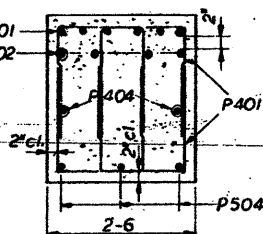


SECTION A-A

SECTION B-B



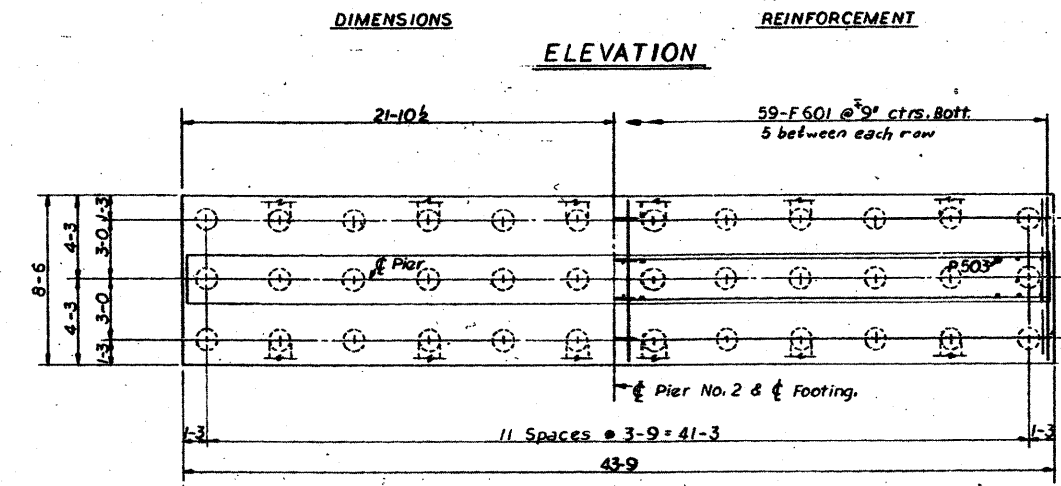
ELEVATION



SECTION C-C

| BILL OF MATERIAL | | | | |
|----------------------------------|-----|------|--------|-------|
| BAR NO. | NO. | SIZE | LENGTH | SHAPE |
| 8P401 | 96 | #4 | 5-3 | U |
| 8P402 | 44 | #4 | 11-0 | B |
| 8P403 | 80 | #4 | 6-8 | U |
| 8P404 | 4 | #4 | 27-9 | — |
| 8P406 | 28 | #4 | 22-0 | — |
| 8P407 | 6 | #4 | 7-2 | C |
| 8P501 | 4 | #5 | 42-11 | — |
| 8P502 | 44 | #5 | 17-3 | U |
| 8P503 | 88 | #5 | 3-8 | U |
| 8P504 | 6 | #5 | 6-6 | — |
| 8P701 | 10 | #7 | 21-0 | — |
| 8P901 | 12 | #9 | 27-9 | — |
| 8P902 | 8 | #9 | 14-0 | — |
| 8P903 | 48 | #9 | 11-6 | — |
| 8P904 | 48 | #9 | 5-1 | U |
| 8F501 | 12 | #5 | 22-3 | — |
| 8F601 | 59 | #6 | 8-3 | — |
| Class "X" Concrete Cu. Yds. 93.4 | | | | |
| Reinforcement bars Lbs. 8570 | | | | |
| Crosotied Piles Lin. Ft. 432 | | | | |

END VIEW
NOTE: All edges to have standard 3/4 chamfer except footing.



FOOTING PLAN

| PILE DATA | |
|------------------|-----------|
| Type | Crosotied |
| Capacity | 20 Tons |
| Estimated Length | 12' |
| No. required | 36 |

STATE OF ILLINOIS
DEPARTMENT OF PUBLIC WORKS & BLDGS.
DIVISION OF HIGHWAYS
PIER No. 2
15TH ST.
OVER F.A.I. Rte. 64
STATION 75+85.50
F.A.I. Rte. 64 ST. CLAIR CO. SECTION 82-1HB-1
H. W. LOCHNER, INC.
CONSULTING ENGINEERS
CHICAGO, ILLINOIS

Designed by: S. K.
Drawn by: R. A. S.
Checked by: R. N.