

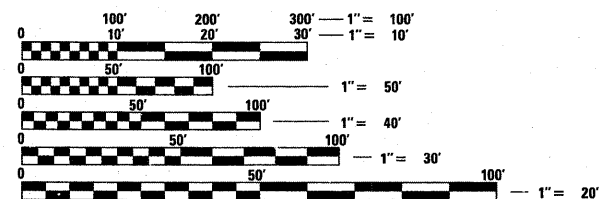
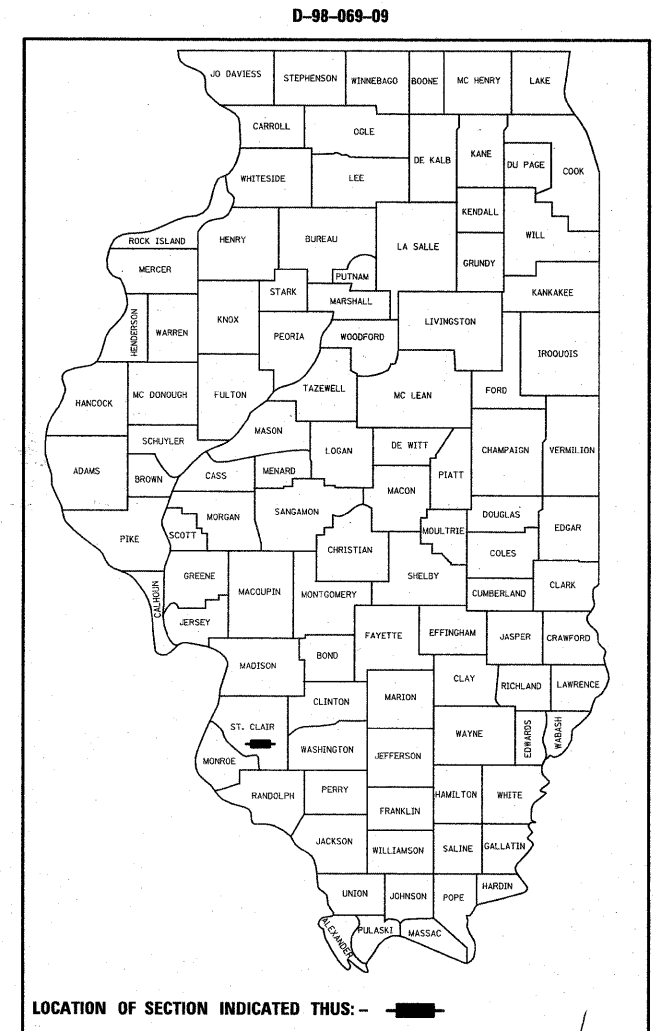
F.A.P. RTE.	SECTION	COUNTY	TOTAL SHEETS	SHEET NO.
592	121-1RS-2	ST. CLAIR	13	1
FED. ROAD DIST. NO.	ILLINOIS	CONTRACT NO. 76D18		

STATE OF ILLINOIS
DEPARTMENT OF TRANSPORTATION
DIVISION OF HIGHWAYS

**PROPOSED
HIGHWAY PLANS**

FAP ROUTE 592 (IL 13)
SECTION 121-1RS-2
ST CLAIR COUNTY
RESURFACING IL 13 BETWEEN IL 163 & IL 13 E JCT
C-98-072-09

FOR INDEX OF SHEETS, SEE SHEET NO. 2



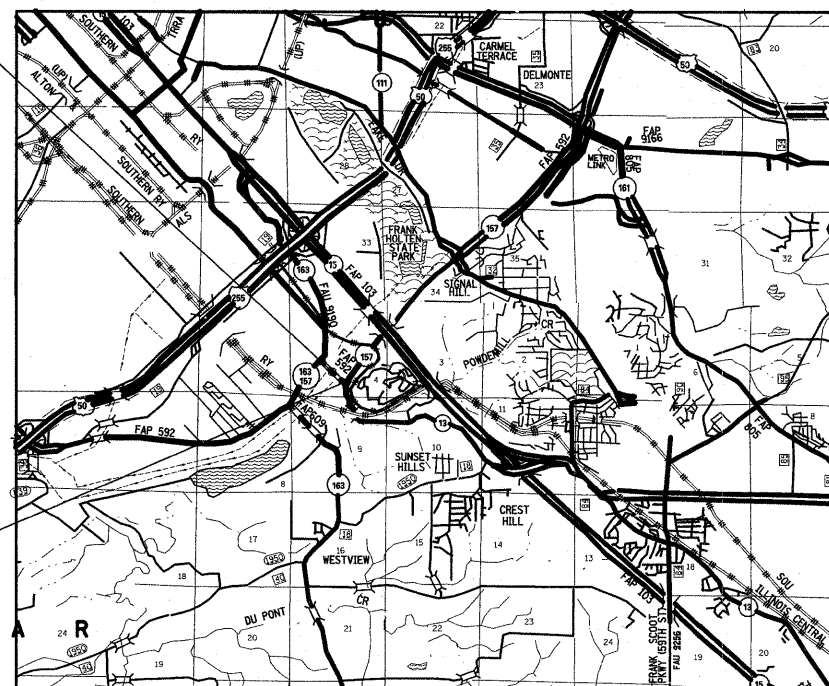
FULL SIZE PLANS HAVE BEEN PREPARED USING STANDARD ENGINEERING SCALES. REDUCED SIZED PLANS WILL NOT CONFORM TO STANDARD SCALES. IN MAKING MEASUREMENTS ON REDUCED PLANS, THE ABOVE SCALES MAY BE USED.

J.U.L.I.E.
JOINT UTILITY LOCATION INFORMATION FOR EXCAVATION
1-800-892-0123
OR 811

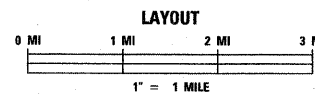
PROJECT ENGINEER: PATTI LEBEAU (618) 346-3179
PROJECT MANAGER: HERVE GELIN (618) 346-3323

CONTRACT NO. 76D18

PROJECT BEGINS
AT STA 424+25.00



PROJECT ENDS
AT STA 431+00.00



LATITUDE /LONGITUDE
START: 38.5592 /-90.1007
END: 38.5606 /-90.1022

GROSS LENGTH = 675 FT = 0.128 MILE
NET LENGTH = 675 FT = 0.128 MILE

TRAFFIC DATA
ADT: 7500 (2010)
9200 (2030)
SU: 2.4%
MU: 0.9%

STATE OF ILLINOIS
DEPARTMENT OF TRANSPORTATION
DIVISION OF HIGHWAYS

SUBMITTED *March 16, 2010*
My Chami
DEPUTY DIRECTOR OF HIGHWAYS, REGION 5 ENGINEER

May 7 2010
Scott B. Stitt P.E. & I
ACTING ENGINEER OF DESIGN AND ENVIRONMENT

May 7 2010
Christine M. Reed/en
DIRECTOR OF HIGHWAYS, CHIEF ENGINEER

**PRINTED BY THE AUTHORITY
OF THE STATE OF ILLINOIS**