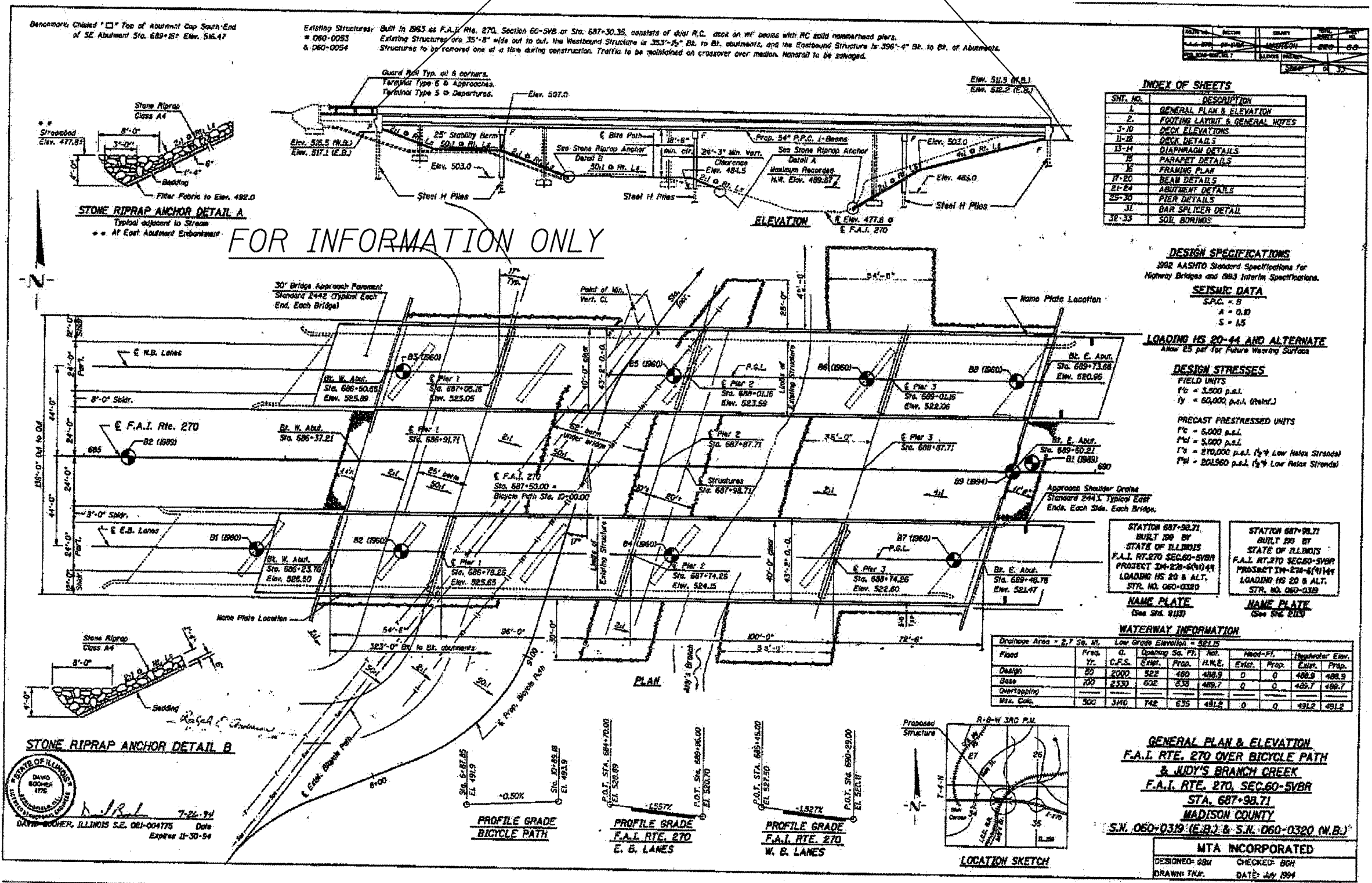


Wash the deck surface, drains, top and inside parapet faces.
The abutments are integral (without expansion joints), so no work is required under the bridge.



INDEX OF SHEETS

SHT. NO.	DESCRIPTION
1	GENERAL PLAN & ELEVATION
2	FOOTING LAYOUT & GENERAL NOTES
3-10	DECK ELEVATIONS
11-18	DECK DETAILS
19-24	DIAPHRAGM DETAILS
25	PARAPET DETAILS
26	FRAMING PLAN
27-30	BEAM DETAILS
31-34	ABUTMENT DETAILS
35-38	PIER DETAILS
39	BAR SPLICER DETAIL
40-43	SOIL BORINGS

DESIGN SPECIFICATIONS
1992 AASHTO Standard Specifications for Highway Bridges and 2003 Interim Specifications.

SETBACK DATA
S.P.C. = B
A = 0.80
S = 15

LOADING HS 20-44 AND ALTERNATE
Allow 25 psi for Future Wearing Surface

DESIGN STRESSES
FIELD UNITS
F_c = 3,000 p.s.i.
F_y = 50,000 p.s.i. (Reinf.)

PRECAST PRESTRESSED UNITS
F_c = 6,000 p.s.i.
F_y = 5,000 p.s.i.
F_c = 270,000 p.s.i. (1/2" Low Relax Strands)
F_y = 201,500 p.s.i. (1/2" Low Relax Strands)

NAME PLATE
See Sta. 8137

NAME PLATE
See Sta. 2125

WATERWAY INFORMATION

Flood	Freq. Yr.	C.F.S.	Opening		Net H.W.E.	Head-Ft. Extg.	Prop.	Highwater Elev.	
			Area	Vel.				Extg.	Prop.
Design	50	2200	522	488.9	0	0	488.9	488.9	
Base	100	2330	602	489.7	0	0	489.7	489.7	
Overtopping									
Max. Conc.	500	3140	742	491.2	0	0	491.2	491.2	

GENERAL PLAN & ELEVATION
F.A.I. RTE. 270 OVER BICYCLE PATH & JUDY'S BRANCH CREEK
F.A.I. RTE. 270, SEC. 60-5VBR
STA. 687+98.71
MADISON COUNTY
S.N. 060-0319 (E.B.) & S.N. 060-0320 (W.B.)

MTA INCORPORATED
DESIGNED: 88u CHECKED: 88u
DRAWN: T.M. DATE: JUN 1994

LOCATION NO. 2

Benchmarks: Chisled "X" Top of Abutment Cap South End of SE Abutment Sta. 689+15' Elev. 516.47

Existing Structures: Built in 1963 as F.A.I. Rte. 270, Section 60-5VBR or Sta. 687-30.35, consists of dual R.C. deck on WF beams with RC solid nonshored piers.
Existing Structures: 35'-8" wide out to out. The Westbound Structure is 33'-7 1/2" Bt. to Bt. abutments, and the Eastbound Structure is 39'-4" Bt. to Bt. of Abutments.
Structures to be removed one of a time during construction. Traffic to be maintained on crossover over median. Material to be salvaged.

STONE RIPRAP ANCHOR DETAIL A
Typical adjacent to Stream
At East Abutment Embankment

STONE RIPRAP ANCHOR DETAIL B

STATE OF ILLINOIS
DAVID BOCHER, ILLINOIS S.E. 081-004175 Date 7-26-94 Expires 11-30-94

FOR INFORMATION ONLY

Location 4
SN 060-0319(EB) & 0320(WB)
I-270 over Judy's Branch Creek & Bike Trail
Sta. 687+98.71

FILE NAME =	USER NAME = #USER#	DESIGNED A. Vinson	REVISED -	F.A.I. RTE.	SECTION	COUNTY	TOTAL SHEETS	SHEET NO.
#FILE#	DRAWN A. Vinson	CHECKED J. Uehle	REVISED -	270	0-8 BRIDGE CLEANING 2010-1	MADISON	8	8
	PLOT SCALE = #SCALE#	DATE 6-11-2010	REVISED -	GENERAL PLAN & ELEVATION - FOR INFORMATION ONLY		CONTRACT NO. 76D45		
	PLOT DATE = #DATE#		REVISED -	SCALE:	SHEET NO.	OF SHEETS	STA.	TO STA.
				FED. ROAD DIST. NO.		ILLINOIS FED. AID PROJECT		