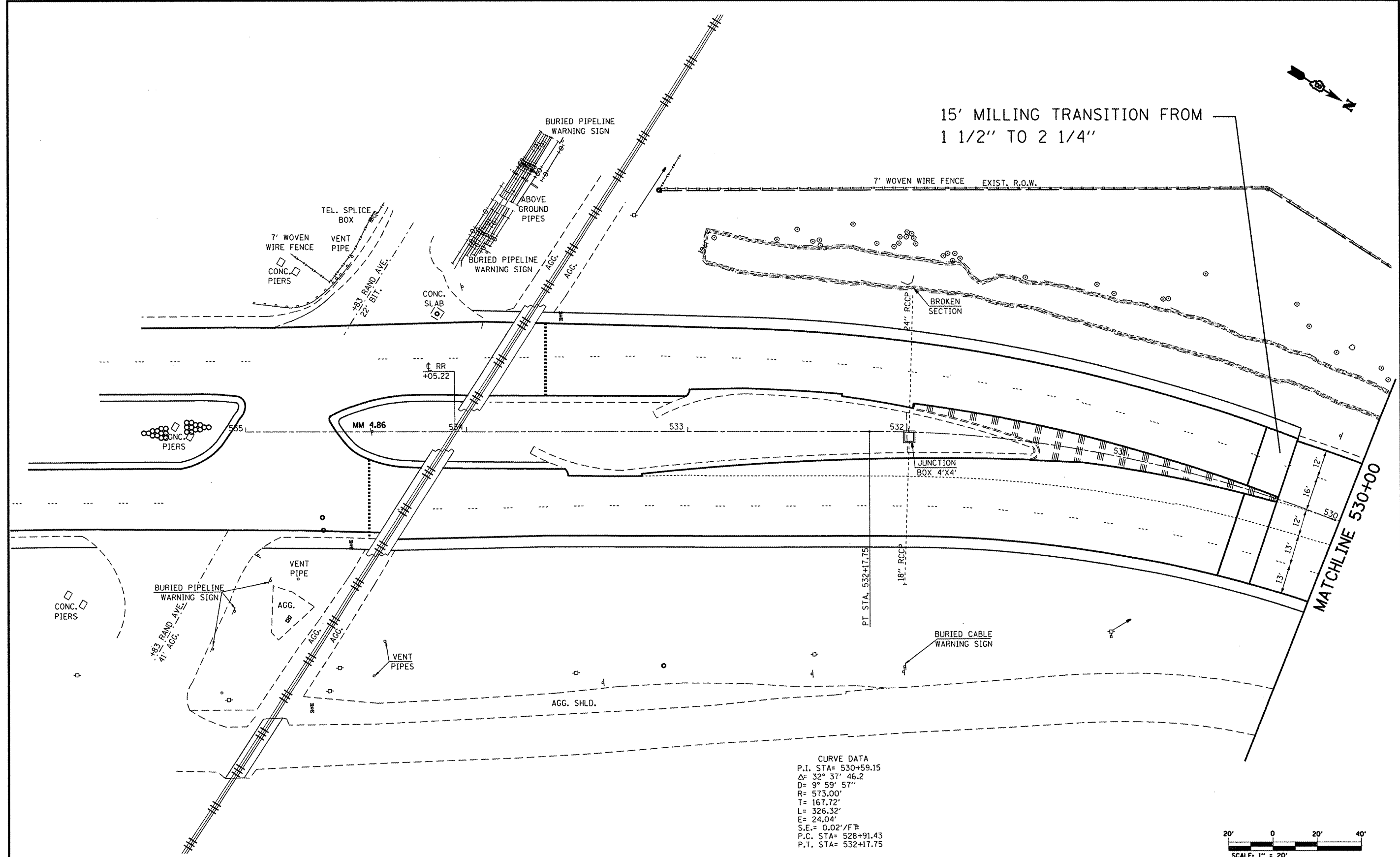
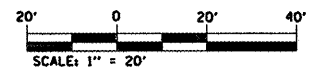




15' MILLING TRANSITION FROM
1 1/2" TO 2 1/4"



CURVE DATA
 P.I. STA= 530+59.15
 Δ = 32° 37' 46.2
 D= 9° 59' 57"
 R= 573.00'
 T= 167.72'
 L= 326.32'
 E= 24.04'
 S.E.= 0.02'/FB
 P.C. STA= 528+91.43
 P.T. STA= 532+17.75



MATCHLINE 530+00

FILE NAME =	USER NAME = #USER#	DESIGNED -	REVISED -
#FILE#		DRAWN -	REVISED -
	PLOT SCALE = #SCALE#	CHECKED -	REVISED -
	PLOT DATE = #DATE#	DATE -	REVISED -

**STATE OF ILLINOIS
DEPARTMENT OF TRANSPORTATION**

**PLAN SHEET
RAND AVE.**

SCALE: 20'=1" SHEET NO. 8 OF 20 SHEETS STA. TO STA.

F.A.P. RTE.	SECTION	COUNTY	TOTAL SHEETS	SHEET NO.
582	(4,5)RS	MADISON	71	23
FED. ROAD DIST. NO. ILLINOIS FED. AID PROJECT			CONTRACT NO. 76D47	