

STATE OF ILLINOIS
DEPARTMENT OF TRANSPORTATION
DIVISION OF HIGHWAYS

**PROPOSED
HIGHWAY PLANS**

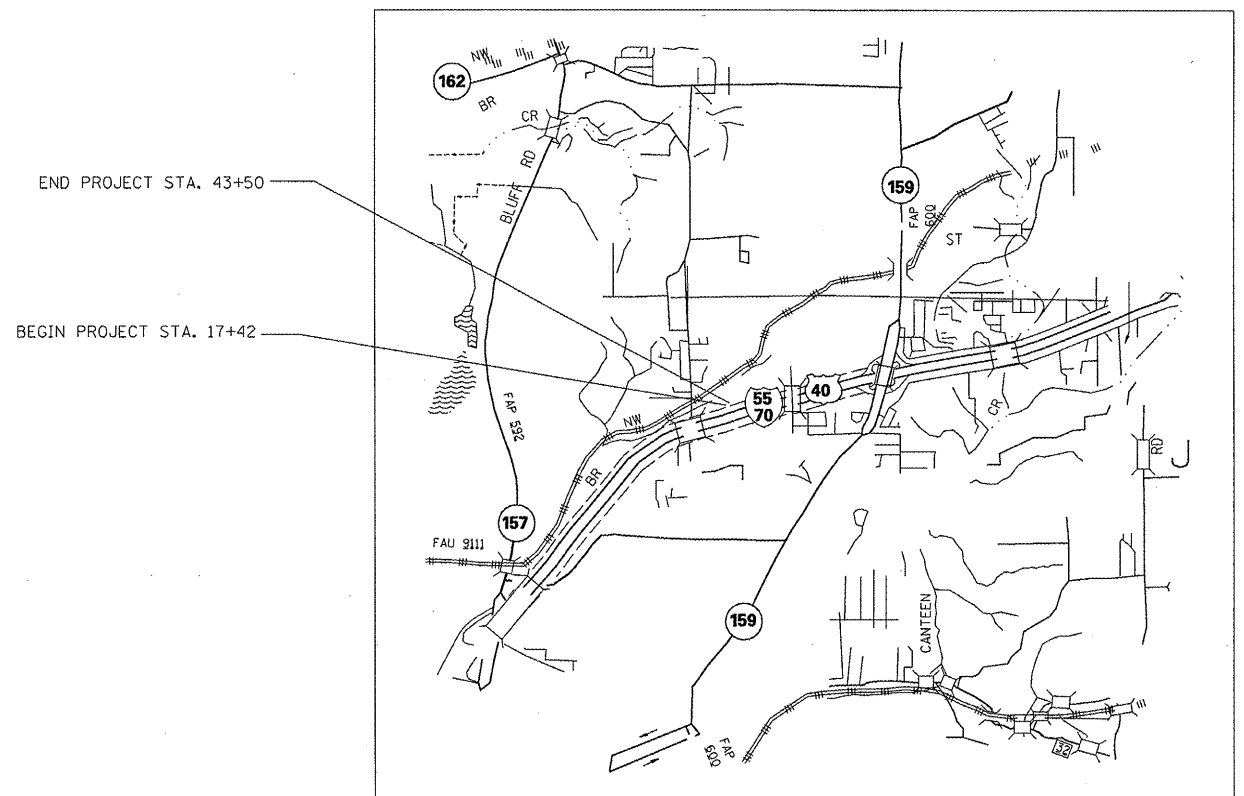
ROUTE FAI 55/70 (I-55/70)
SECTION 60-81-2
MARYVILLE WEIGH STATION
PATCHING AND RESURFACING
MADISON COUNTY

C-98-033-10

F.A.I. RTE.	SECTION	COUNTY	TOTAL SHEETS	SHEET NO.
55/70	60-81-2	MADISON	16	1
		ILLINOIS	CONTRACT NO. 76D55	

INDEX OF SHEETS

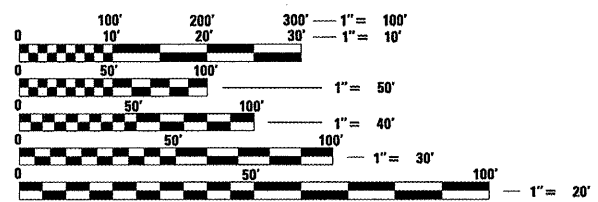
1. COVER SHEET
2. GENERAL NOTES, STANDARDS, & COMMITMENTS
3. SUMMARY OF QUANTITIES
- 4.-5. SCHEDULE
- 6.-8. TYPICAL DETAILS
- 9.-11. PLAN VIEW
12. PAVEMENT MARKING
13. PROPOSED PARKING LOT DETAIL
14. PROPOSED SIDEWALK DETAIL
15. PROPOSED DUMPSTER PLATFORM DETAIL
16. BUTT JOINT DETAIL



NOT TO SCALE

GROSS LENGTH = 3253' = 0.62 MILES
NET LENGTH = 2568' = 0.49 MILES

SCALES



FULL SIZE PLANS HAVE BEEN PREPARED USING STANDARD ENGINEERING SCALES. REDUCED SIZED PLANS WILL NOT CONFORM TO STANDARD SCALES. IN MAKING MEASUREMENTS ON REDUCED PLANS, THE ABOVE SCALES MAY BE USED.

J.U.L.I.E.
JOINT UTILITY LOCATION INFORMATION FOR EXCAVATION
1-800-892-0123
OR 811

PROJECT ENGINEER: TIM PADGETT 618-346-3325
PROJECT MANAGER: LUKE WATERS 618-346-3194

CONTRACT NO. 76D55

STATE OF ILLINOIS
DEPARTMENT OF TRANSPORTATION
DIVISION OF HIGHWAYS

SUBMITTED *March 25* 20 *10*
Mary C Jamie
DEPUTY DIRECTOR OF HIGHWAYS, REGION ENGINEER

May 7 20 *10*
Scott E. Stitt, P.E.
acting ENGINEER OF DESIGN AND ENVIRONMENT

May 7 20 *10*
Christine M. Reed
DIRECTOR OF HIGHWAYS, CHIEF ENGINEER

**PRINTED BY THE AUTHORITY
OF THE STATE OF ILLINOIS**