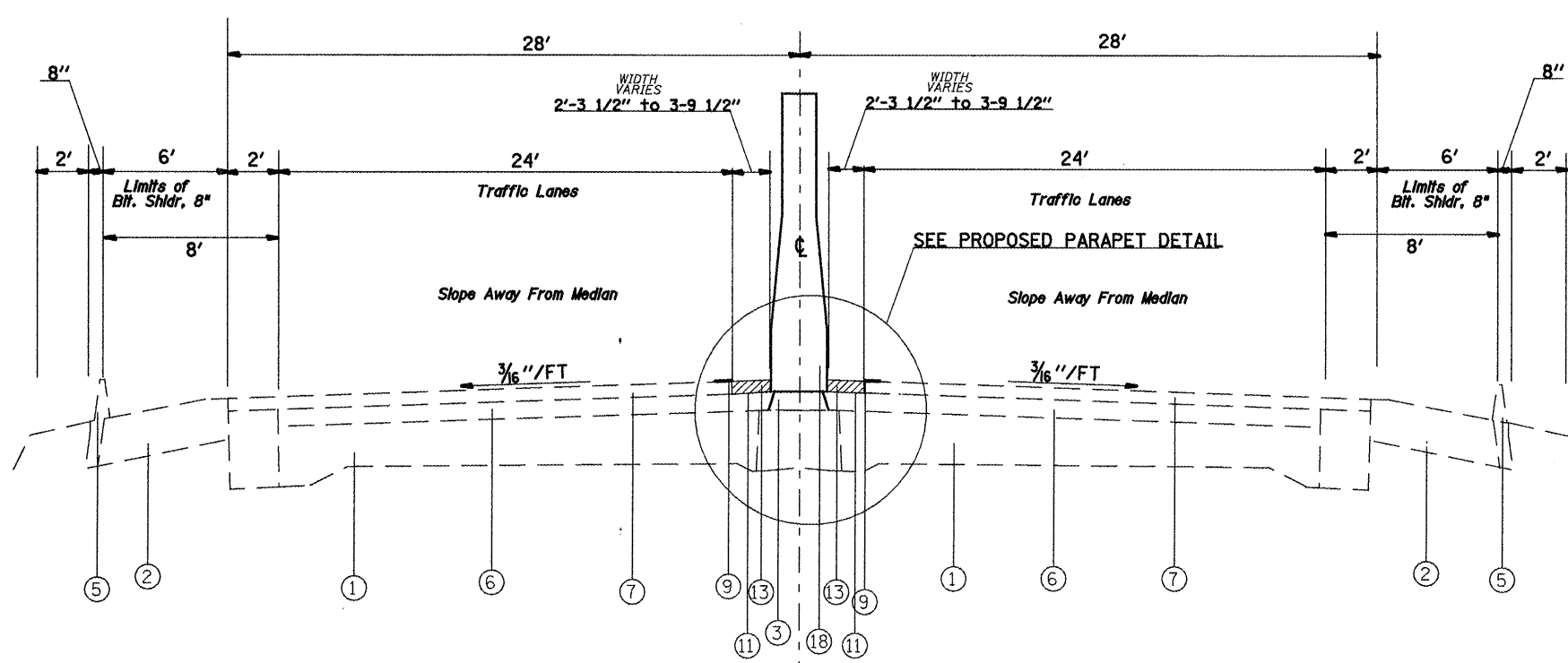
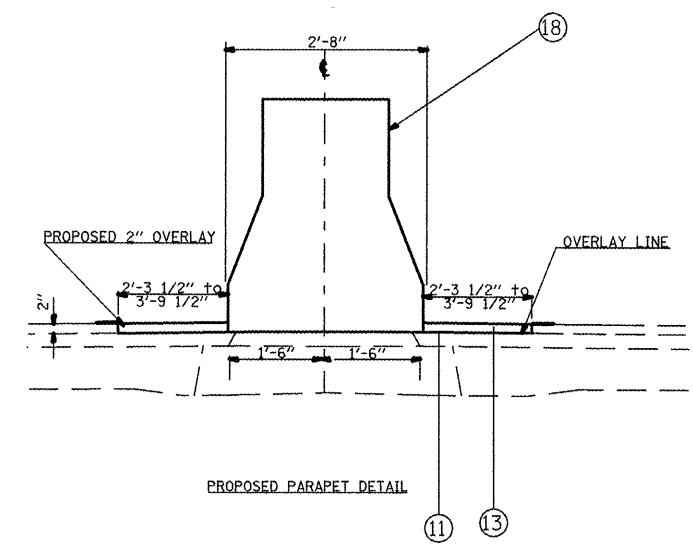
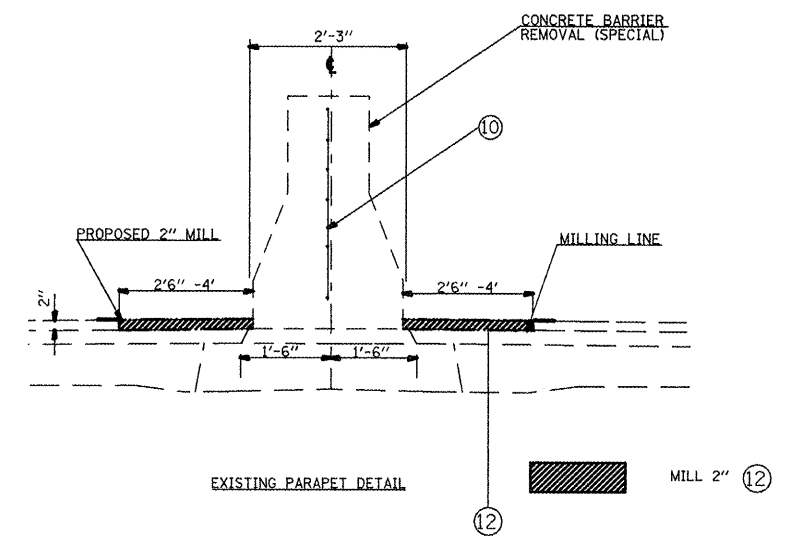


EXISTING
FAP 103 (IL 15)
 STA. 235+10 TO STA 250+92
 STA. 271+70 TO STA 314+40



PROPOSED
FAP 103 (IL 15)
 STA. 235+10 TO STA 250+92
 STA. 271+70 TO STA 314+40



LEGEND

- ① EXISTING PORTLAND CONCRETE CEMENT PAVEMENT
- ② EXISTING BITUMINOUS SHOULDER (8")
- ③ EXISTING CONCRETE SOLID MEDIAN
- ④ EXISTING CONCRETE MEDIAN SURFACE
- ⑤ EXISTING BITUMINOUS CONCRETE CURB
- ⑥ EXISTING BITUMINOUS OVERLAY 3 1/2"
- ⑦ EXISTING BITUMINOUS OVERLAY (2")
- ⑧ EXISTING CONCRETE BARRIER, DOUBLE FACE
- ⑨ EXISTING 4" SOLID YELLOW LINE
- ⑩ EXISTING WELDING WIRE FABRIC
- ⑪ PROPOSED BITUMINOUS MATERIALS (PRIME COAT)
- ⑫ PROPOSED HOT-MIX ASPHALT SURFACE REMOVAL, 2"
- ⑬ PROPOSED HOT-MIX ASPHALT SURFACE COURSE, MIX "E", N70
- ⑭ PROPOSED CONCRETE CURB, TYPE B (MODIFIED)
- ⑮ PROPOSED CONCRETE MEDIAN SURFACE, 4"
- ⑯ PROPOSED CONCRETE MEDIAN, TYPE SB (SEE TABLE)
- ⑰ PROPOSED CONCRETE MEDIAN, TYPE SM (SEE TABLE)
- ⑱ PROPOSED CONCRETE BARRIER, DOUBLE FACE, 32" HEIGHT.

FILE NAME =	USER NAME = washingtona	DESIGNED -	REVISED -	STATE OF ILLINOIS DEPARTMENT OF TRANSPORTATION	EXISTING TYPICAL SECTIONS		F.A.P. RTE.	SECTION	COUNTY	TOTAL SHEET NO.
ca\pw_work\p\dot\washingtona\d9168383	876d63-ah-t-plan.dgn	DRAWN -	REVISED -		103	28-11-1	ST. CLAIR	25	4	
PLOT SCALE = 1/8" = 1' / IN.		CHECKED -	REVISED -		SCALE: SHEET NO. OF SHEETS STA. 295+00 TO STA. 314+40		CONTRACT NO. 76063			
PLOT DATE = 3/18/2018		DATE -	REVISED -		FED. ROAD DIST. NO. ILLINOIS FED. AID PROJECT					