

STATE OF ILLINOIS
DEPARTMENT OF TRANSPORTATION
DIVISION OF HIGHWAYS

**PROPOSED
HIGHWAY PLANS**

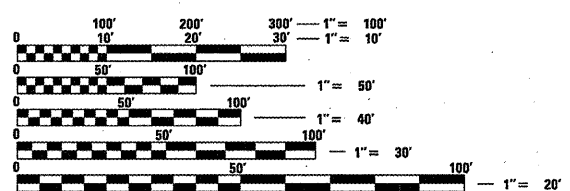
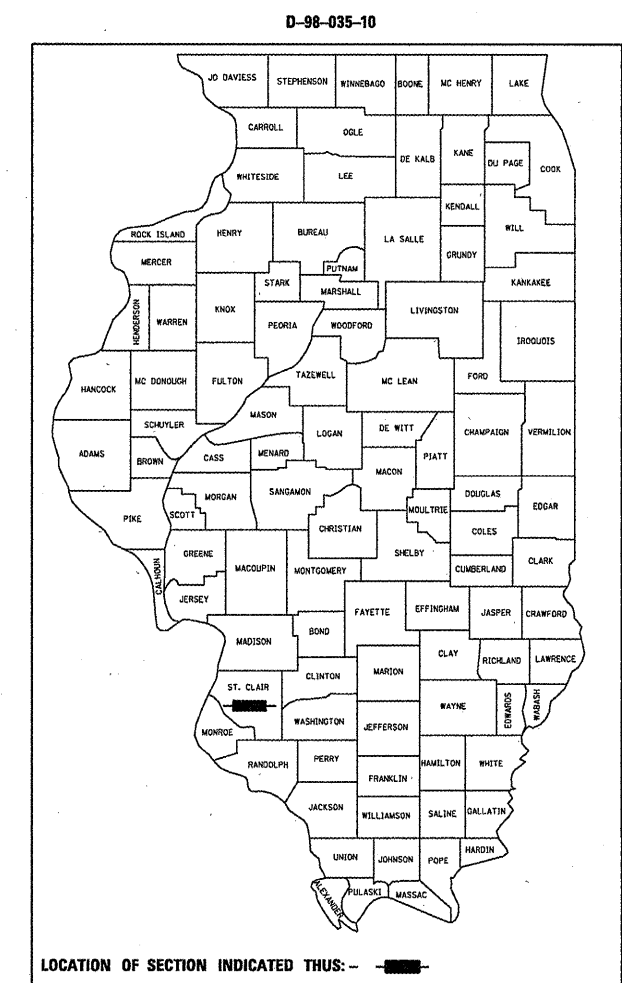
FAS ROUTE 840 (DOUGLASMILLSTADT RD.)
SECTION 233RS

IL 158 TO FLORAVILLE RD.
RESURFACING
ST. CLAIR COUNTY

C-98-048-10

F.A.S. RTE.	SECTION	COUNTY	TOTAL SHEETS	SHEET NO.
840	233RS	ST. CLAIR	31	1
FED. ROAD DIST. NO.	ILLINOIS	CONTRACT NO. 76D67		

FOR INDEX OF SHEETS, SEE SHEET NO. 2



FULL SIZE PLANS HAVE BEEN PREPARED USING STANDARD ENGINEERING SCALES. REDUCED SIZED PLANS WILL NOT CONFORM TO STANDARD SCALES. IN MAKING MEASUREMENTS ON REDUCED PLANS, THE ABOVE SCALES MAY BE USED.

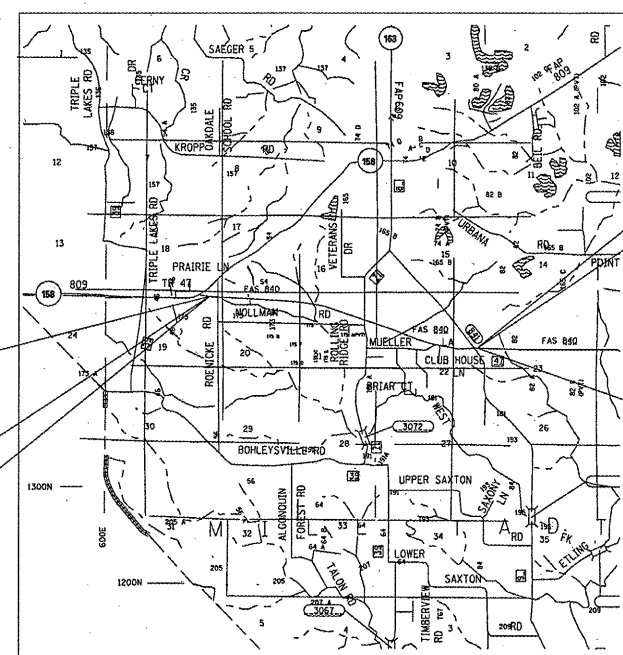
J.U.L.I.E.
JOINT UTILITY LOCATION INFORMATION FOR EXCAVATION
1-800-892-0123
OR 811

PROJECT ENGINEER: LUCAS DICKS (618)346-3194
PROJECT MANAGER: TIM PADGETT (618)346-3325

CONTRACT NO. 76D67

BEGIN SECTION
STA. 114 + 12
38.440766297971614
-90.12546300888061

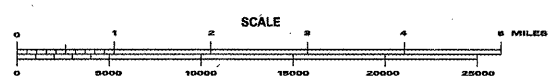
2010 ADT - 3400
SU = 4.7%
MU = 4.4%



2010 ADT - 3250
SU = 4.5%
MU = 4.0%

END SECTION
STA. 267 + 74
38.43288350196883
-90.07396459579468

FUNCTIONAL CLASS = MAJOR COLLECTOR NON URBAN



GROSS LENGTH = 2.9 MILES
NET LENGTH = 2.9 MILES

STATE OF ILLINOIS
DEPARTMENT OF TRANSPORTATION
DIVISION OF HIGHWAYS

SUBMITTED March 16 20 10
Mary C. Jamie
DEPUTY DIRECTOR OF HIGHWAYS, REGION ENGINEER

May 7 20 10
Scott E. Stitt, P.E.
ENGINEER OF DESIGN AND ENVIRONMENT

May 7 20 10
Christine M. Reade
DIRECTOR OF HIGHWAYS, CHIEF ENGINEER

PRINTED BY THE AUTHORITY
OF THE STATE OF ILLINOIS