

STATE OF ILLINOIS  
DEPARTMENT OF TRANSPORTATION  
DIVISION OF HIGHWAYS

**PROPOSED  
HIGHWAY PLANS**

FAS 791, FAU 8570 (SELMVILLE ROAD)  
SECTION (17X-15D)RS-1  
RESURFACING  
MARION COUNTY  
C-98-062-10

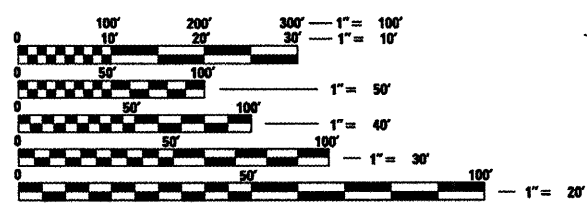
F.A.S. RTE.	SECTION	COUNTY	TOTAL SHEETS	SHEET NO.
791	(17X-15D)RS-1	MARION	11	1
		ILLINOIS	CONTRACT NO. 76D81	

FOR INDEX OF SHEETS, SEE SHEET NO. 2



**DESIGN DESIGNATION**  
MAJOR COLLECTOR

ADT (2010) = 3600  
MU = 1.1%  
SU = 2.6%

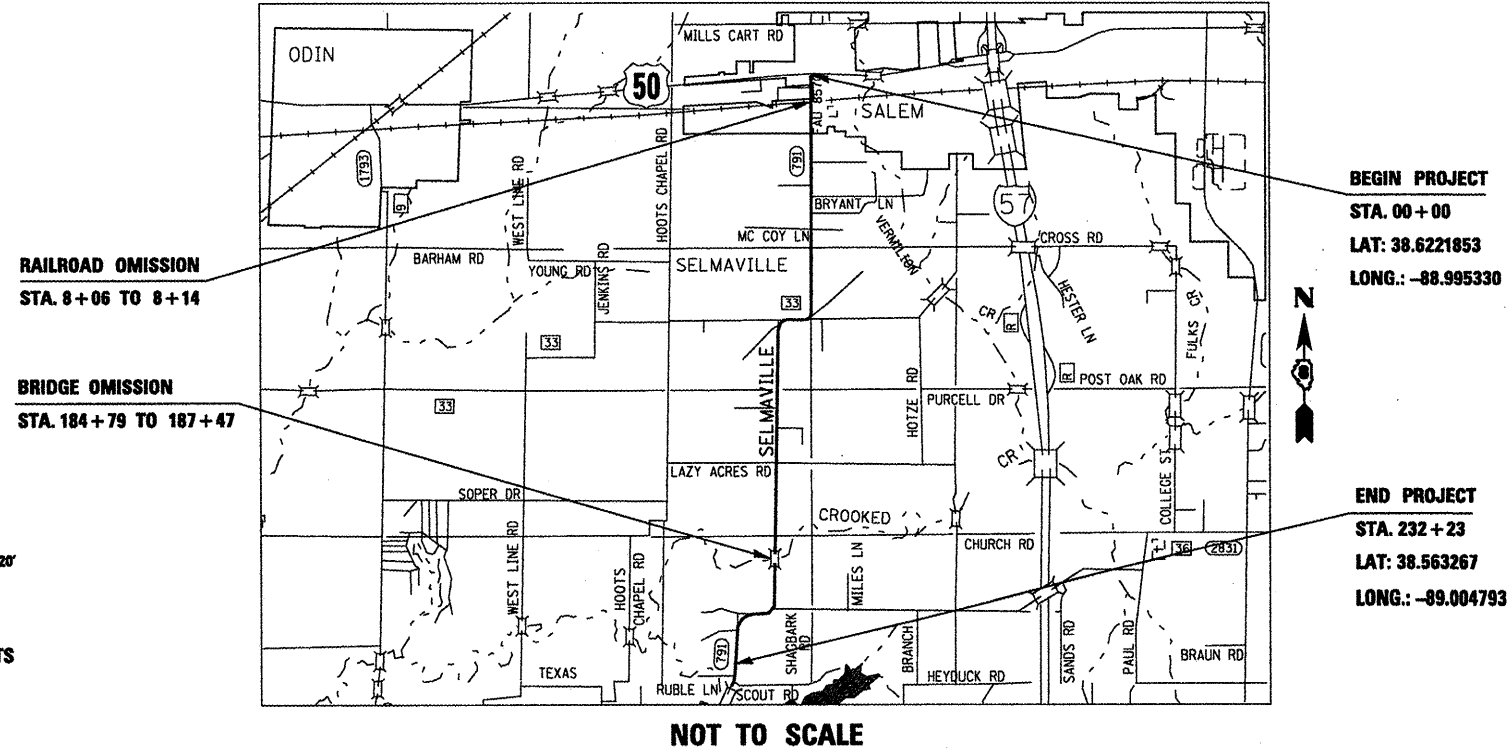


FULL SIZE PLANS HAVE BEEN PREPARED USING STANDARD ENGINEERING SCALES. REDUCED SIZED PLANS WILL NOT CONFORM TO STANDARD SCALES. IN MAKING MEASUREMENTS ON REDUCED PLANS, THE ABOVE SCALES MAY BE USED.

J.U.L.I.E.  
JOINT UTILITY LOCATION INFORMATION FOR EXCAVATION  
1-800-892-0123  
OR 811

PROJECT ENGINEER: TIM PADGETT 618-346-3155  
PROJECT MANAGER: ROB ELLIS 618-249-8066

CONTRACT NO. 76D81



GROSS LENGTH = 23223 FT. = 4.398 MILES  
NET LENGTH = 22947 FT. = 4.346 MILES

STATE OF ILLINOIS  
DEPARTMENT OF TRANSPORTATION  
DIVISION OF HIGHWAYS

SUBMITTED 3/19 20 10

*Mary Bonnie*  
DEPUTY DIRECTOR OF HIGHWAYS, REGION ENGINEER

May 7 20 10  
*Scott E. Stitt P.E. / ec*  
ENGINEER OF DESIGN AND ENVIRONMENT

May 7 20 10  
*Christine M. Reed / ec*  
DIRECTOR OF HIGHWAYS, CHIEF ENGINEER

**PRINTED BY THE AUTHORITY  
OF THE STATE OF ILLINOIS**

**INDEX OF SHEETS**

- 1 COVER SHEET
- 2 GENERAL NOTES
- 3 SUMMARY OF QUANTITIES
- 4 TYPICAL SECTIONS
- 5 SCHEDULE OF QUANTITIES
- 6 LOCATION MAP
- 7 DETAILED LOCATION MAP
- 8 TRANSITION AND BUTT JOINT DETAIL
- 9 HMA MILLING DETAIL
- 10-11 PAVEMENT MARKING DETAIL

**STANDARDS**

000001-05	701311-03
406201-01	701326-03
442201-03	701336-05
542301-02	701502-03
635006-03	701901-01
635011-02	720001-01
701006-03	720006-02
701011-02	728001-01
701201-03	780001-02
701301-03	781001-03
701306-02	

**GENERAL NOTES**

1. IT SHALL BE THE CONTRACTOR'S RESPONSIBILITY TO INSURE THAT THE ADJACENT PAVEMENT IS NOT DAMAGED DURING ANY OPERATION.
2. THE CONTRACTOR SHALL VERIFY ALL DIMENSIONS AND CONDITIONS IN THE FIELD PRIOR TO CONSTRUCTION AND ORDERING OF MATERIALS.
3. THE THICKNESS OF THE BITUMINOUS MIXTURE SHOWN ON THE PLANS IS THE NOMINAL THICKNESS. DEVIATIONS FROM THE NOMINAL THICKNESS WILL BE PERMITTED WHEN SUCH DEVIATIONS OCCUR DUE TO IRREGULARITIES IN THE EXISTING SURFACE OR BASE ON WHICH THE BITUMINOUS MIXTURE IS PLACED.
4. IT SHALL BE THE CONTRACTOR'S RESPONSIBILITY TO INSURE THAT THE PAVEMENT DRAINS PROPERLY AFTER EACH OPERATION. IN EFFORTS TO PROTECT THE TRAVELING PUBLIC, THE TRAFFIC LANES MUST BE KEPT CLEAR AND MAINTAINED BY THE CONTRACTOR.
5. SHORT TERM PAVEMENT MARKING SHALL BE APPLIED TO BITUMINOUS MATERIALS (PC), LEVELING BINDER AND FINAL SURFACE AS NEEDED. THE REMOVAL OF THE SHORT-TERM PAVEMENT MARKING FROM FINAL SURFACE SHALL BE PAID AS WORK ZONE PAVEMENT MARKING REMOVAL.
6. THE BITUMINOUS MATERIALS (PRIME COAT) THAT SHALL PLACED BEFORE THE INCIDENTAL HMA SURFACING IS PLACED AS CALLED OUT IN THE SCHEDULES SHALL BE INCLUDED IN THE COST OF INCIDENTAL HMA SURFACING.
7. THE THICKNESS OF HMA SURFACE REMOVAL IS THE REMOVAL DEPTH AT THE CENTERLINE.
8. ALL TEMPORARY PAVEMENT MARKINGS WILL BE PLACED IN SUCH A MANNER SO AS NOT TO INTERFERE WITH THE PLACEMENT OF PERMANENT PAVEMENT MARKINGS.
9. ALL PATCHING ON THIS PROJECT SHALL BE COMPLETED PRIOR TO HMA SURFACE REMOVAL.
10. THE RESIDENT ENGINEER SHALL CONTACT JEFF ABEL AT 618-346-3283 TO VERIFY THE RAILROAD SIGNING AND PAVEMENT MARKING LOCATIONS. CURRENT SPEED LIMITS MAY REQUIRE ADJUSTMENT TO THE LETTER & SYMBOL LAYOUT.
11. RAILROAD FLAGGERS WILL BE REQUIRED FOR THIS PROJECT.
12. NO OVERNIGHT LANE CLOSURES WILL BE ALLOWED.
13. AFTER HMA SURFACE REMOVAL, THE CONTRACTOR SHALL PLACE TYPE II BARRICADES AROUND THE PERIMETER OF THE FLUSH MEDIAN AT THE INTERSECTION OF SELMAVILLE RD. AND US 50 UNTIL FINAL PAVEMENT MARKINGS HAVE BEEN INSTALLED.

14. ALL EXCAVATION ADJACENT TO THE EDGE OF PAVEMENT SHALL BE PROTECTED WITH EXTENDED LEG BARRICADES AND APPROPRIATE LIGHTS.
15. ROAD CONSTRUCTION AHEAD SIGNS SHALL BE PLACED AT THE BEGINNING AND END OF THE PROJECT PLUS THE INTERSECTING SIDE ROADS, AND WILL BE INCLUDED IN THE TRAFFIC CONTROL PAY ITEMS. ALL CONSTRUCTION SIGNS SHALL BE FLUORESCENT ORANGE 48"x48".
16. FLAGGERS SHALL BE PRESENT DURING ALL CLOSURE HOURS, INCLUDING LUNCH HOUR, AND NO ADDITIONAL COMPENSATION SHALL BE APPLIED.
17. THE SIGNS THAT ARE TO BE INSTALLED AT STA. 9+00 AND 231+23 SHALL BE PURCHASED BY THE CONTRACTOR.
18. THE CONTRACTOR SHALL BE AWARE THAT THERE ARE WATER VALVES LOCATED WITHIN THE RESURFACING LIMITS. CARE SHALL BE TAKEN IN THESE LOCATIONS DURING MILLING OPERATIONS.
19. ILLINOIS STATE LAW REQUIRES A 48-HOUR NOTICE BE GIVEN TO ALL UTILITIES BEFORE DIGGING. FIELD MARKING OF FACILITIES MAY BE OBTAINED BY CONTACTING J.U.L.I.E. OR FOR NON-MEMBERS, THE UTILITY COMPANY DIRECTLY. AGENCIES KNOWN TO HAVE FACILITIES WITHIN THE PROJECT AREA ARE AS FOLLOWS:

AMERNIP (GAS & ELECTRIC)  
 BP Pipelines - North America (PIPELINE)  
 AT&T ILLINOIS (COMMUNICATIONS)  
 CENTERPOINT ENERGY (PIPELINE)  
 CHARTER COMMUNICATIONS, INC. (CABLE TV)  
 CITATION OIL & GAS CORP (PIPELINE)  
 COUNTRYMARK COOPERATIVE, LLP (PIPELINE)  
 FARM BUREAU OIL COMPANY  
 FAIRPOINT COMMUNICATIONS (COMMUNICATIONS)  
 VILLAGE OF ODIN (WATER & SEWER)  
 RACCOON WATER COMPANY (WATER)  
 CITY OF SALEM (GAS)  
 TRI-COUNTY ELECTRIC COOPERATIVE, INC. (ELECTRIC)  
 US SONET (COMMUNICATIONS)

MEMBERS OF J.U.L.I.E. (800)-892-0123 ARE INDICATED BY \*. NON J.U.L.I.E. MEMBERS MUST BE NOTIFIED INDIVIDUALLY.

ADT (CONSTRUCTION YR)	3600
MUZ	1.1
SUZ	2.6
20 YR ESAL'S	0.35

MIXTURE USE	SURFACE	LEVEL BINDER	PATCHING	SHOULDERS	Partial Depth Patch
AC/PG	PG 64-22	PG 64-22	PG 64-22	PG 64-22	PG 64-22
RAP % MAX	SEE SPEC.	SEE SPEC.	10%	SEE CONTRACT	SEE SPEC.
DESIGN AIR VOIDS	4.0% @ Ndes=70	4.0% @ Ndes=70	4.0% @ Ndes=70	RAP SPEC. PROV.	4.0% @ Ndes=70
MIX COMPOSITION				4.0% @ Ndes=30	
(GRADATION MIXTURE)	IL 12.5/9.5	IL 9.5	IL 19.0		
FRICTION AGG	MIXTURE "C"	MIXTURE "C"	MIXTURE "B"	BAM	MIXTURE "C"

PLAN QUANTITIES FOR BITUMINOUS CONCRETE SURFACE COURSE ITEMS ARE CALCULATED USING A UNIT WEIGHT OF 112 LB/SQ YD/IN.

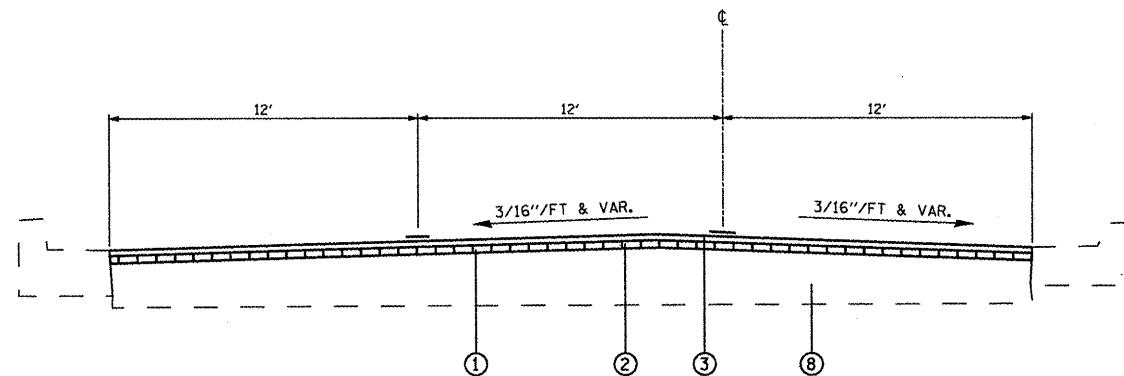
FILE NAME *	USER NAME * alford	DESIGNED -	REVISED -	<b>STATE OF ILLINOIS DEPARTMENT OF TRANSPORTATION</b>	<b>GENERAL NOTES, INDEX OF SHEETS, STANDARDS</b>	F.A.S. RTE.	SECTION	COUNTY	TOTAL SHEETS	SHEET NO.
ca:\pe...work\pndot\alford\0174886\0978\01-shit-plan.dgn	DRAWN -	REVISED -	791			(17X-150RS-1)	WARREN	11	2	
PLOT SCALE * 1/8" = 1' IN.	CHECKED -	REVISED -	CONTRACT NO. 78061							
PLOT DATE * 3/4/2010	DATE -	REVISED -	SCALE:			SHEET NO. OF SHEETS	STA. TO STA.	FED. ROAD DIST. NO. (ILLINOIS) FED. AID PROJECT		

# SUMMARY OF QUANTITIES

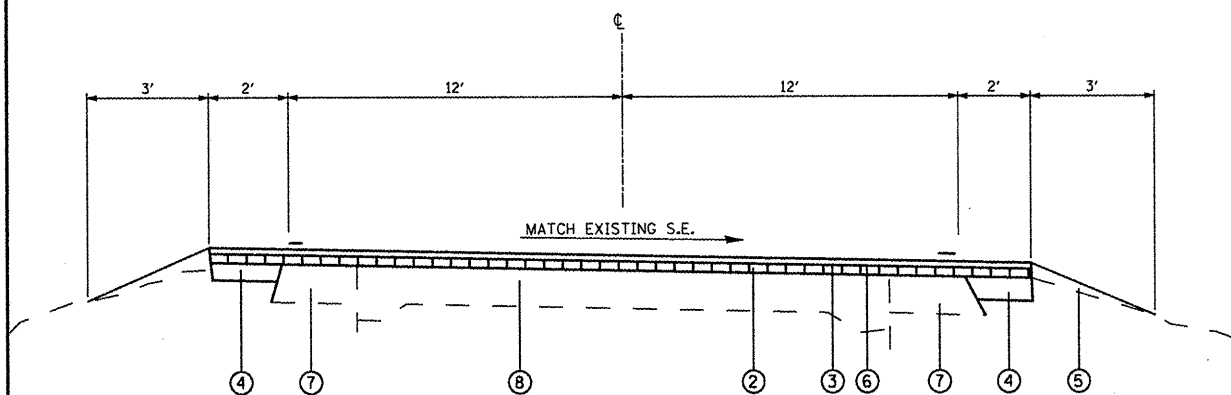
SUMMARY OF QUANTITIES			100% STATE TOTAL QUANTITIES	CONSTRUCTION TYPE CODE			SUMMARY OF QUANTITIES			100% STATE TOTAL QUANTITIES	CONSTRUCTION TYPE CODE		
CODE NO	ITEM	UNIT		1000			CODE NO	ITEM	UNIT		1000		
20800150	TRENCH BACKFILL	CU YD	16.5				70301000	WORK ZONE PAVEMENT MARKING REMOVAL	SO FT	822			
40600200	BITUMINOUS MATERIALS (PRIME COAT)	TON	20.1				X72000100	SIGN PANEL - TYPE 1	SO FT	10			
40600300	AGGREGATE (PRIME COAT)	TON	97				X72800100	TELESCOPING STEEL SIGN SUPPORT	FOOT	27			
40600635	LEVELING BINDER (MACHINE METHOD), N70	TON	2724				X78000100	THERMOPLASTIC PAVEMENT MARKING - LETTERS AND SYMBOLS	SO FT	247.2			
40600982	HOT-MIX ASPHALT SURFACE REMOVAL - BUTT JOINT	SO YD	2162				X78000200	THERMOPLASTIC PAVEMENT MARKING - LINE 4"	FOOT	67098			
40600990	TEMPORARY RAMP	SO YD	177				X78000500	THERMOPLASTIC PAVEMENT MARKING - LINE 8"	FOOT	432			
40603315	HOT-MIX ASPHALT SURFACE COURSE, MIX "C", N70	TON	5444				X78000600	THERMOPLASTIC PAVEMENT MARKING - LINE 12"	FOOT	169			
40800050	INCIDENTAL HOT-MIX ASPHALT SURFACING	TON	227				X78000650	THERMOPLASTIC PAVEMENT MARKING - LINE 24"	FOOT	116			
44000151	HOT-MIX ASPHALT REMOVAL, 1/2"	SO YD	59440				X78100100	RAISED REFLECTIVE PAVEMENT MARKER	EACH	3			
44000158	HOT-MIX ASPHALT REMOVAL, 2 1/4"	SO YD	2871				X78200410	GUARDRAIL MARKERS, TYPE A	EACH	16			
44200156	PAVEMENT PATCHING TYPE II, 13 INCH	SO YD	25				78300200	RAISED REFLECTIVE PAVEMENT MARKER REMOVAL	EACH	3			
44200162	PAVEMENT PATCHING TYPE IV, 13 INCH	SO YD	100				X4421000	PARTIAL DEPTH PATCHING	TON	19			
48102100	AGGREGATE WEDGE SHOULDER, TYPE B	TON	1240				X4422030	PARTIAL DEPTH REMOVAL 3"	SO YD	113			
48203021	HOT-MIX ASPHALT SHOULDERS, 6"	SO YD	1745				Z0048665	RAILROAD PROTECTIVE LIABILITY INSURANCE	L SUM	1			
50105220	PIPE CULVERT REMOVAL	FOOT	110										
54213669	PRECAST REINFORCED CONCRETE FLARED END SECTIONS 24"	EACH	4										
54223456	REMOVE & RELAY PIPE CULVERT 21"	FOOT	24										
54200229	PIPE CULVERTS, CLASS D, TYPE 1 24"	FOOT	85										
67000400	ENGINEER'S FIELD OFFICE, TYPE A	CAL MO	12										
67100100	MOBILIZATION	L SUM	1										
70100450	TRAFFIC CONTROL AND PROTECTION, STANDARD 701201	L SUM	1										
70100460	TRAFFIC CONTROL AND PROTECTION, STANDARD 701306	L SUM	1										
70100500	TRAFFIC CONTROL AND PROTECTION, STANDARD 701326	L SUM	1										
70100600	TRAFFIC CONTROL AND PROTECTION, STANDARD 701336	L SUM	1										
70102622	TRAFFIC CONTROL AND PROTECTION, STANDARD 701502	L SUM	1										
70300100	SHORT-TERM PAVEMENT MARKING	FOOT	7635										
70300210	TEMPORARY PAVEMENT MARKING - LETTERS AND SYMBOLS	SO FT	247.2										
70300220	TEMPORARY PAVEMENT MARKING - LINE 4"	FOOT	67098										
70300250	TEMPORARY PAVEMENT MARKING - LINE 8"	FOOT	432										
70300260	TEMPORARY PAVEMENT MARKING - LINE 12"	FOOT	169										
70300280	TEMPORARY PAVEMENT MARKING - LINE 24"	FOOT	116										

*\*Specialty Items*

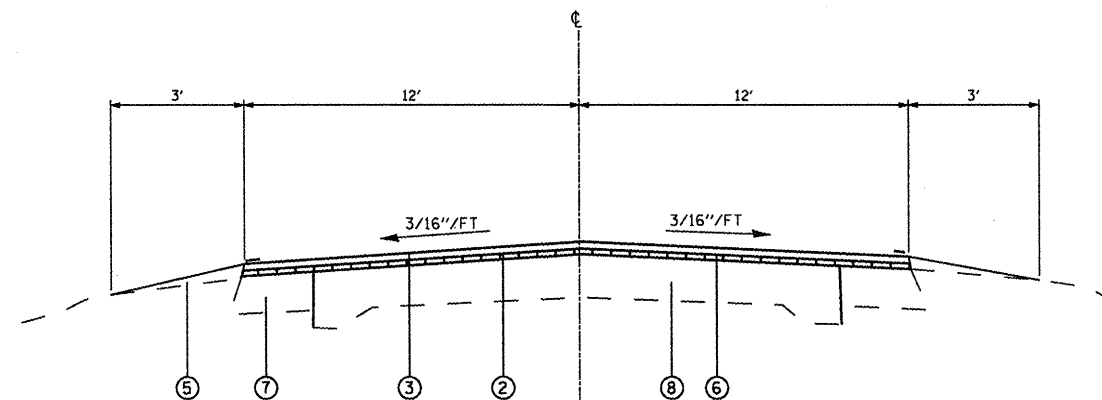
FILE NAME =	USER NAME = Freytr	DESIGNED -	REVISED -	<b>STATE OF ILLINOIS DEPARTMENT OF TRANSPORTATION</b>	<b>SUMMARY OF QUANTITIES</b>				F.A.S. RT#	SECTION	COUNTY	TOTAL SHEETS	SHEET NO.		
ei:\pwork\pwork\DOT\FREYTR\d8174886\d876	BI-shr-plan.dgn	DRAWN -	REVISED -		SCALE:	SHEET NO.	OF	SHEETS	STA.	TO STA.	791	(17X-15DIRS-1)	MARION	11	3
	PLOT SCALE = 100,4566' / IN.	CHECKED -	REVISED -						CONTRACT NO. 76DB1						
	PLOT DATE = 3/19/2010	DATE -	REVISED -						FED. ROAD DIST. NO. ILLINOIS FED. AID PROJECT						



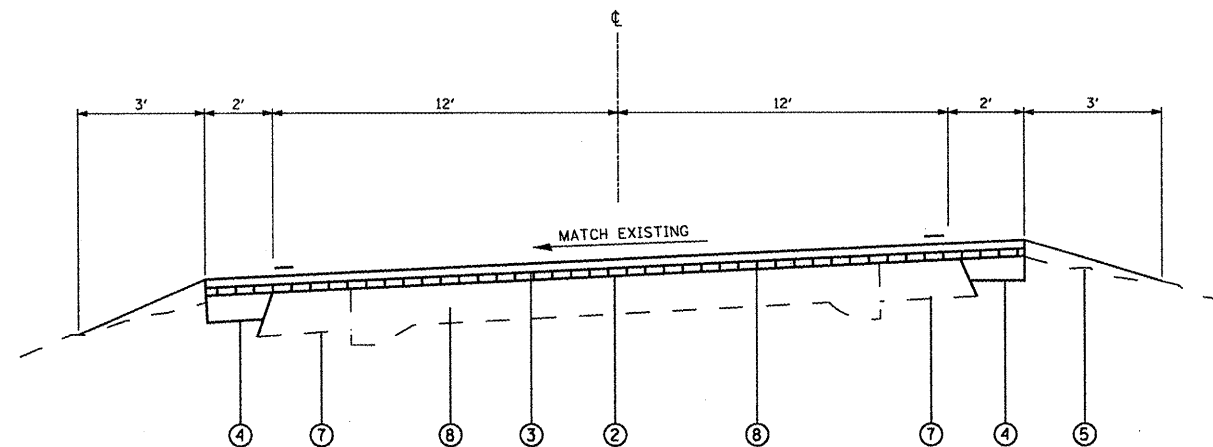
STA. 0+00 TO 5+07



STA. 82+98 TO 91+15  
STA. 197+37 TO 204+65



STA. 5+07 TO 82+98  
STA. 91+15 TO 94+32  
STA. 101+78 TO 184+49  
STA. 187+47 TO 197+37  
STA. 204+65 TO 208+52  
STA. 216+58 TO 232+23



STA. 94+32 TO 101+78  
STA. 208+52 TO 216+58

**LEGEND**

- ① HOT-MIX ASPHALT SURFACE REMOVAL 2 1/4"
- ② LEVELING BINDER (MACHINE METHOD) 3/4"
- ③ HMA SURFACE COURSE, MIX "C", N70, 1 1/2"
- ④ HMA SHOULDER 6"
- ⑤ AGG. SHOULDER WEDGE, TY. B
- ⑥ HMA SURFACE REMOVAL 1/2"
- ⑦ EXISTING BASE COURSE WIDENING
- ⑧ EXISTING PCC PAVEMENT WITH HMA RESURFACING

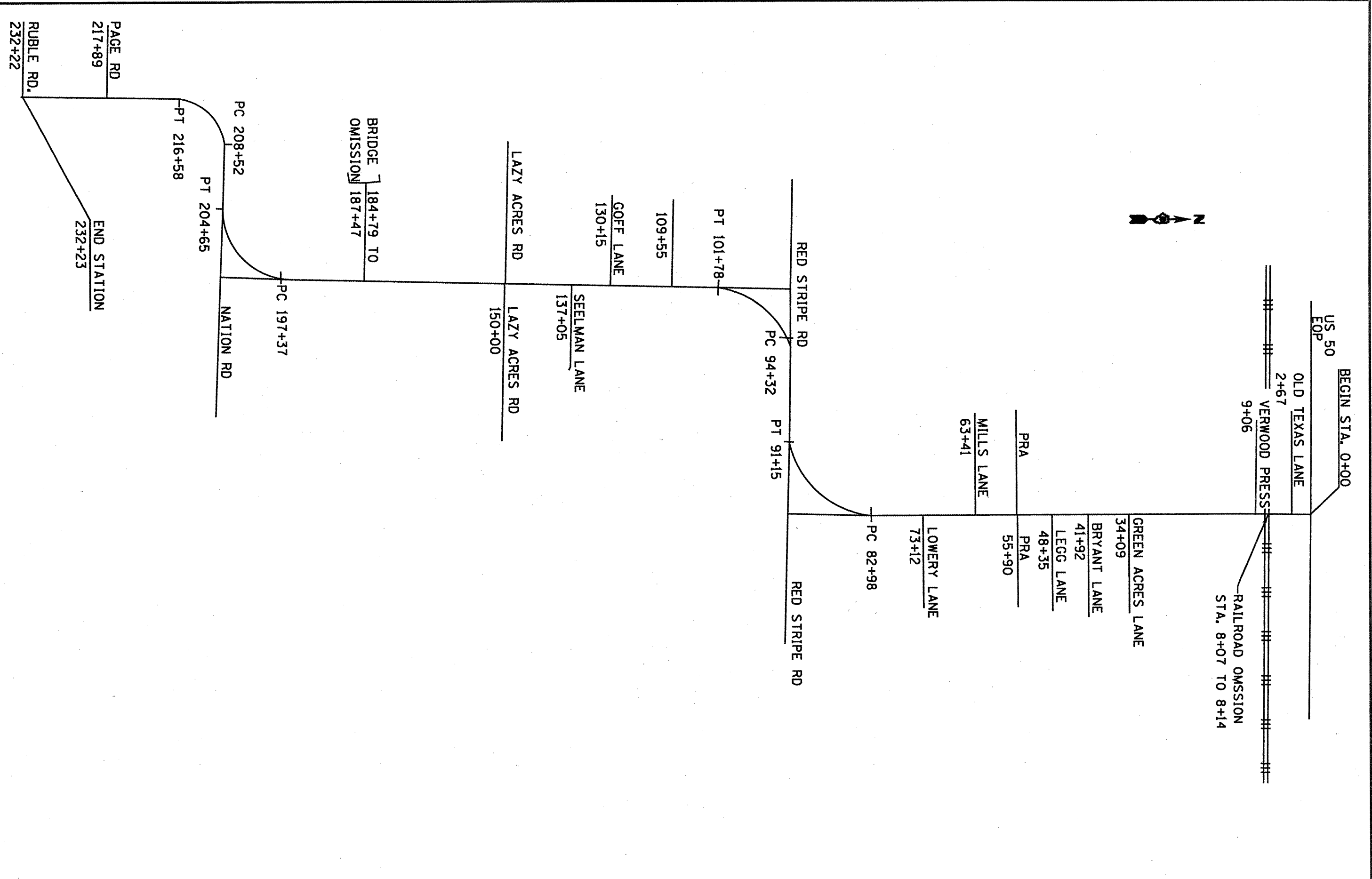
FILE NAME =	USER NAME = freytr	DESIGNED -	REVISED -
ca:\pw_work\PWIDOT\FREYTR\d0174886\d876	81-sh-t-plen.dgn	DRAWN -	REVISED -
	PLOT SCALE = 1/8" = 1' / IN.	CHECKED -	REVISED -
	PLOT DATE = 3/19/2018	DATE -	REVISED -

**STATE OF ILLINOIS  
DEPARTMENT OF TRANSPORTATION**

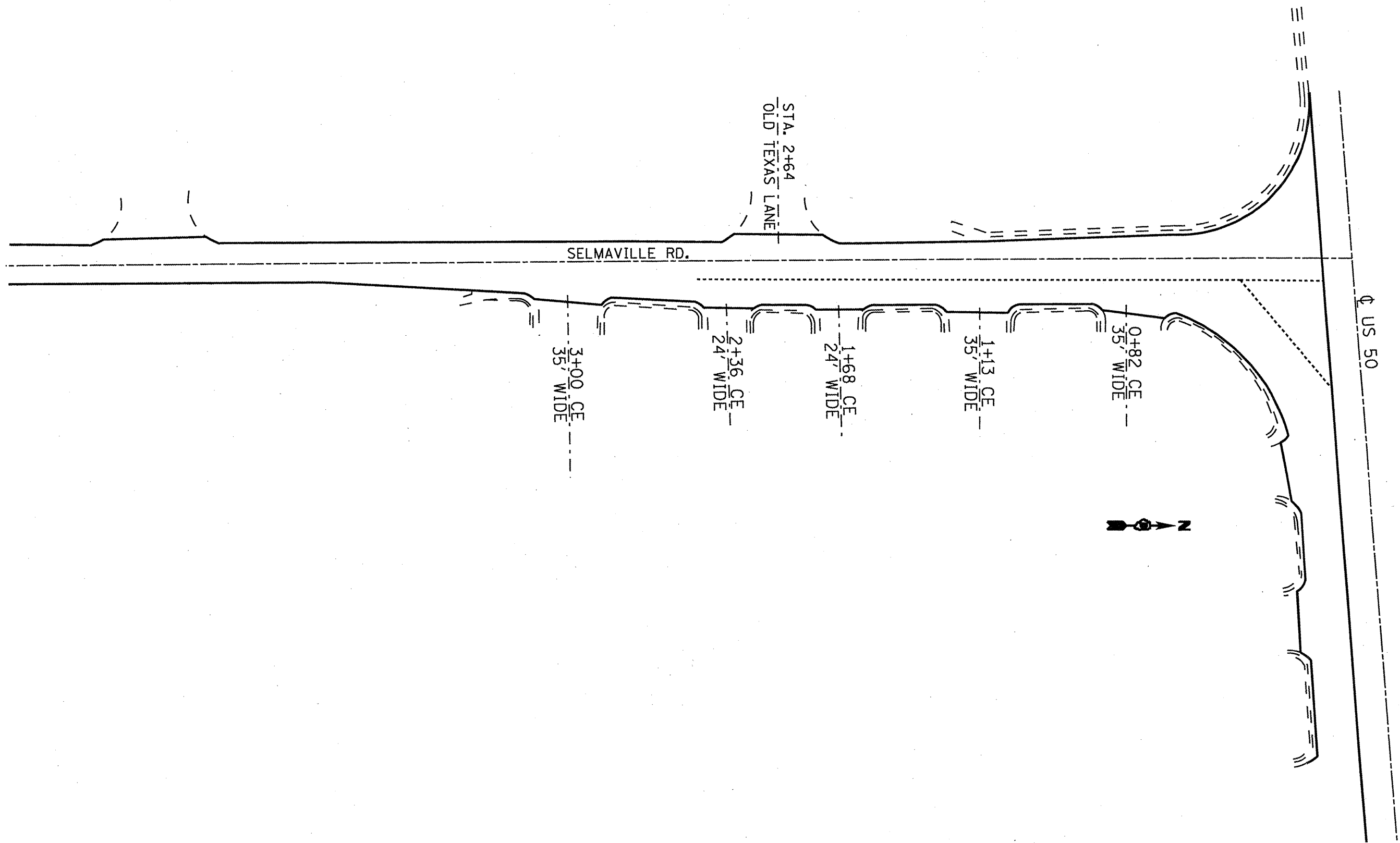
TYPICAL SECTIONS			
SCALE:	SHEET NO.	OF SHEETS	STA. TO STA.

F.A.S. RTE.	SECTION	COUNTY	TOTAL SHEETS	SHEET NO.
791	(17X-15)RS-1	MARION	11	4
CONTRACT NO. 78081				
FED. ROAD DIST. NO. ILLINOIS FED. AID PROJECT				





FILE NAME c:\p\work\p\eidot\elfordb\dl174886\dl878	USER NAME elfordb	DESIGNED -	REVISED -	STATE OF ILLINOIS DEPARTMENT OF TRANSPORTATION	LOCATION MAP		F.A.S. RTE. 791	SECTION CTX-150RS-1	COUNTY MARION	TOTAL SHEETS 11	SHEET NO. 6	
	PLOT SCALE 1/8" = 100.0000' / 1"	CHECKED -	REVISED -		SCALE:	SHEET NO.	OF SHEETS	STA.	TO STA.	CONTRACT NO. 78081		
	PLOT DATE 3/4/2010	DATE -	REVISED -		FED. ROAD DIST. NO.			ILLINOIS FED. AID PROJECT				

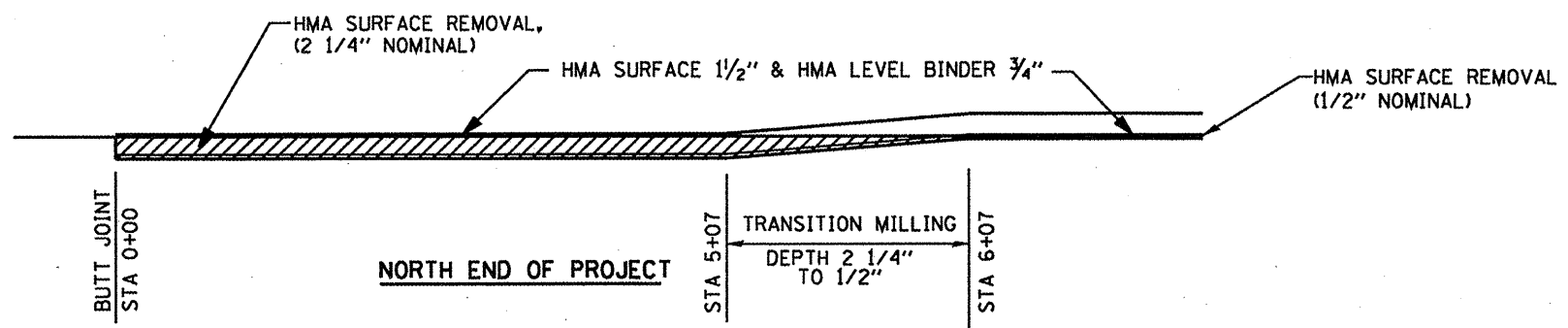


FILE NAME *	USER NAME * elFordb	DESIGNED -	REVISED -
at\pwork\pedit\elFordb\0174886\0876	elFordb	DRAWN -	REVISED -
		CHECKED -	REVISED -
		DATE -	REVISED -

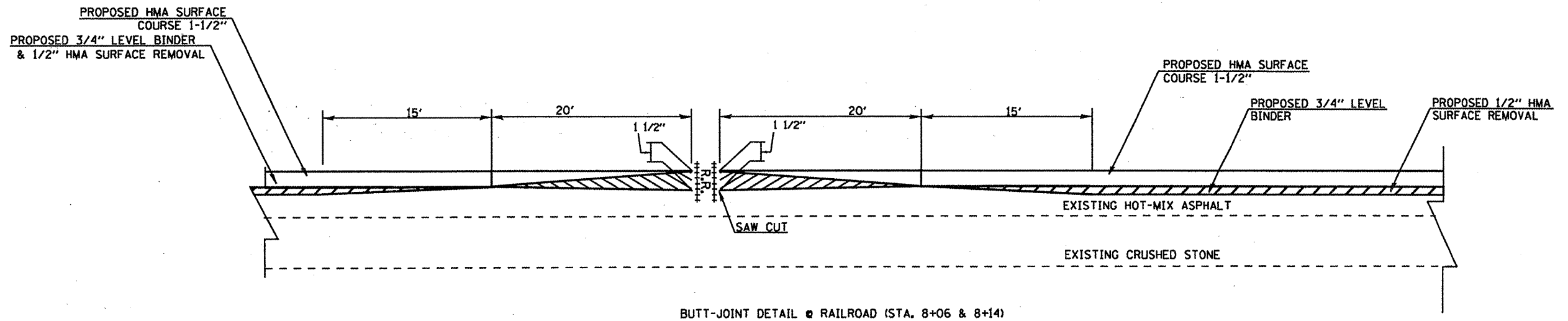
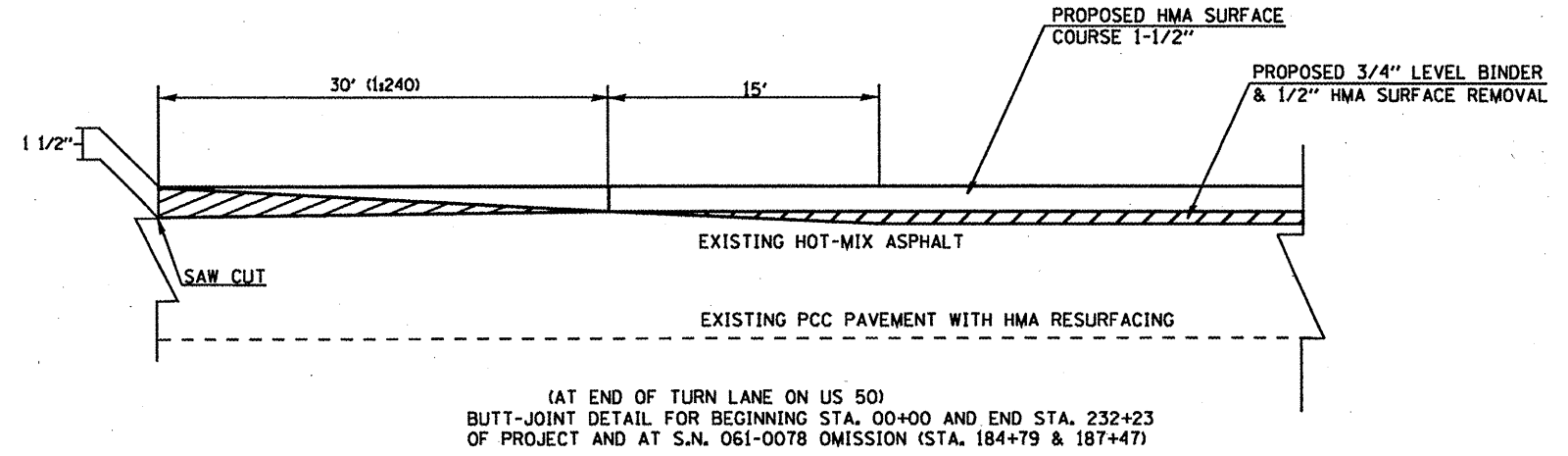
**STATE OF ILLINOIS  
DEPARTMENT OF TRANSPORTATION**

SCALE:		SHEET NO.	OF	SHEETS	STA.	TO STA.
--------	--	-----------	----	--------	------	---------

F.A.S. RTE.	SECTION	COUNTY	TOTAL SHEETS	SHEET NO.
791	(17X-150RS-1)	MARION	11	7
FED. ROAD DIST. NO. (ILLINOIS) FED. AID PROJECT				
CONTRACT NO. 78081				



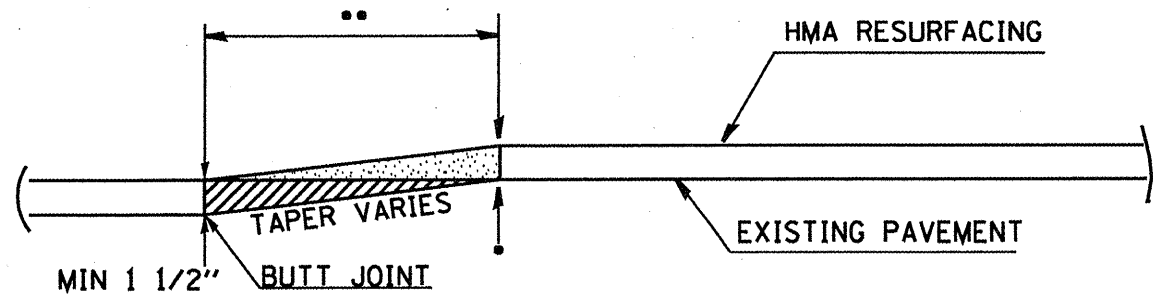
MILLING TRANSITION DETAILS



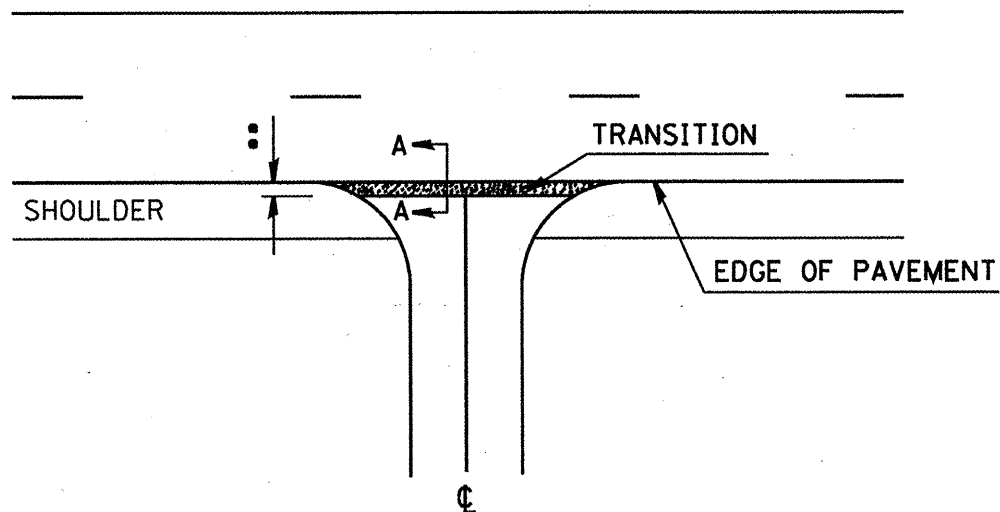
NOTE: ALL SAW CUTS INCLUDED IN THE COST OF HMA SURFACE REMOVAL - BUTT JOINT.

FILE NAME *	USER NAME * a1fordb	DESIGNED -	REVISED -	<b>STATE OF ILLINOIS DEPARTMENT OF TRANSPORTATION</b>	<b>TRANSITION AND BUTT JOINT DETAIL</b>			F.A.S. RTE.	SECTION	COUNTY	TOTAL SHEETS	SHEET NO.
ca:\pe...work\peidot\alfordb\0174886\0878	01-shr-plan.dgn	DRAWN -	REVISED -					791	(17X-150RS-1)	MARION	11	8
PLOT SCALE * 1/8" = 1' / IN.		CHECKED -	REVISED -					CONTRACT NO. 78081				
PLOT DATE * 3/4/2018		DATE -	REVISED -					ILLINOIS FED. AID PROJECT				
				SCALE:	SHEET NO.	OF	SHEETS	STA.	TO STA.			



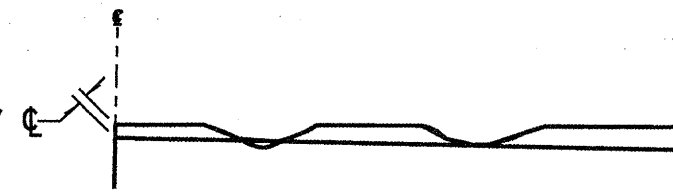


**TRANSITION DETAIL**  
SECTION A-A  
BUTT-JOINT ADDITION



**SIDEROAD DETAIL**

DESIGN DEPTH = 1/2 "



**NOTES:**

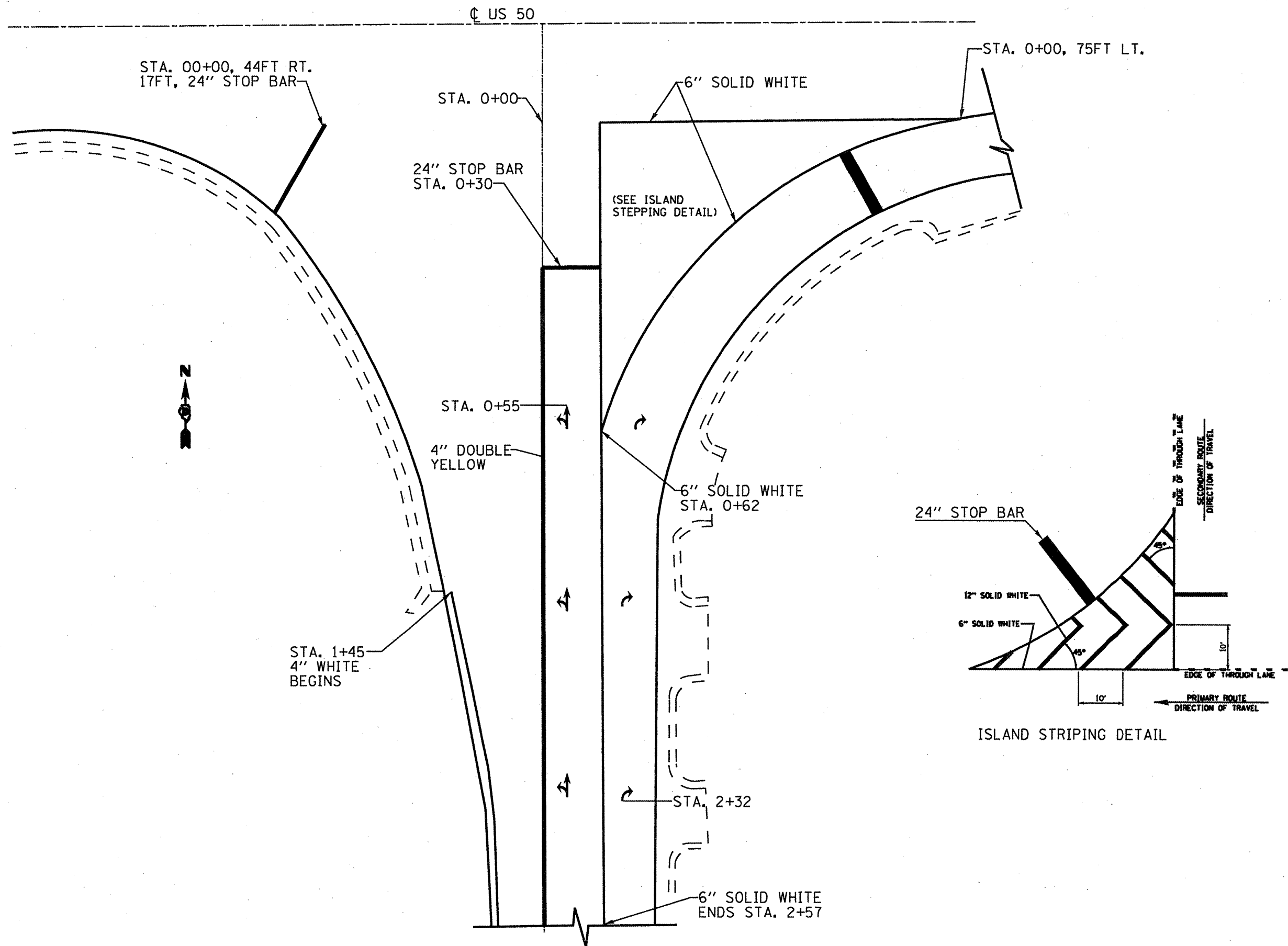
1. MILLING SHALL BE DONE TO ATTAIN A  $\frac{3}{16}$ "' SLOPE IN CROWN SECTIONS
2. EXISTING S.E. AND S.E. TRANSITIONS SHALL BE MAINTAINED UNLESS OTHERWISE SHOWN ON THE PLANS.
3. MILLING TO THE BOTTOM OF WHEEL RUTS SHALL NOT BE NECESSARY UNLESS REQUIRED TO OBTAIN SLOPE OR THE DESIGN DEPTH AT CENTERLINE.
4. THE AVERAGE DEPTH OF MILLING IS ESTIMATED TO BE 1/2 " FROM STATION 5+07 TO 232+23
5. THE PROJECT REQUIRES MILLNG DEPTH TRANSITIONS FROM 1/2" TO 2 1/4" FROM STATION 5+07 TO 6+07 AND WILL BE PAID AS HMA SURFACE REMOVAL 1/2"

**HOT MIX ASPHALT SURFACE REMOVAL DETAIL**  
**HMA MILLING DETAIL**

*EOP ELEVATION CHANGE	**TOTAL TRANSITION LENGTH
3/4"	3.5'
1"	5'
1-1/2"	7.5'
2"	10'
2-1/2"	12.5'
3"	15'
3-1/2"	17.5'
4"	20'
4-1/2"	22.5'
5"	25'
5-1/2"	27.5'
6"	30'

NOTE:  
WHERE THE HMA TRANSITION IS MATCHING INTO AN EXISTING HMA SIDE ROAD SURFACE, A MILLED BUTT JOINT SHALL BE CONSTRUCTED WITHIN THE LIMITS OF THE TOTAL TRANSITION LENGTH ON THE LOCAL ROUTE.

FILE NAME *	USER NAME * alfordb	DESIGNED -	REVISED -	<b>STATE OF ILLINOIS DEPARTMENT OF TRANSPORTATION</b>	<b>HMA MILLING DETAIL</b>			P.A.S. RTE.	SECTION	COUNTY	TOTAL SHEETS	SHEET NO.
al\pe_work\pedit\alfordb\0174886\0876181-shs-plan.dgn	DRAWN -	REVISED -	791					(17X-150RS-1)	MARION	11	9	
PLOT SCALE * 1/8"=1'-0"	CHECKED -	REVISED -	CONTRACT NO. 78061									
PLOT DATE * 3/4/2018	DATE -	REVISED -	SCALE:		SHEET NO. OF SHEETS	STA. TO STA.	FED. ROAD DIST. NO. (ILLINOIS) FED. AID PROJECT					



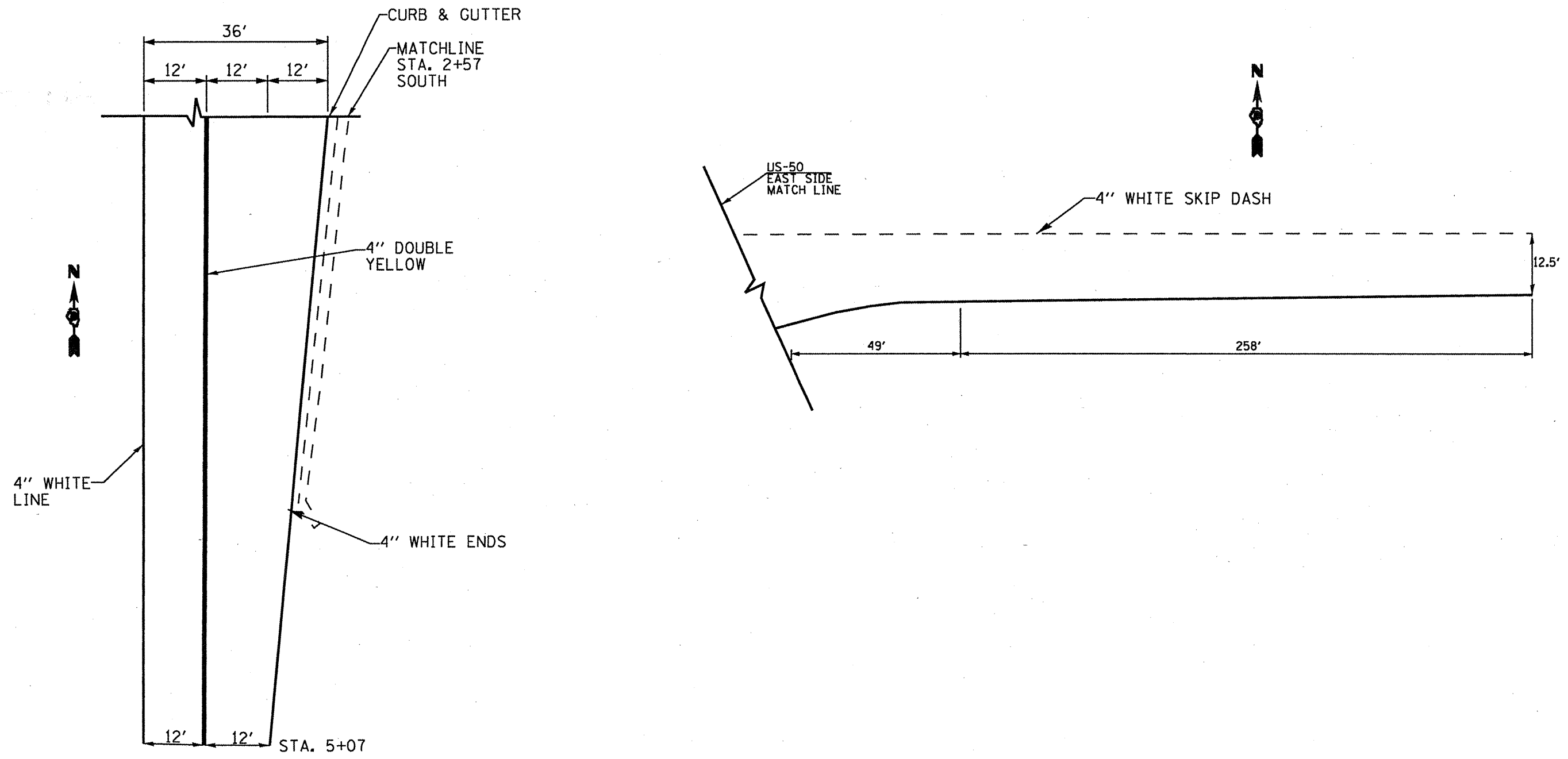
FILE NAME *	USER NAME * alfords	DESIGNED -	REVISED -
al\pe_work\pndot\alfords\08174886\0876	bl-shh-plan.dgn	DRAWN -	REVISED -
PLOT SCALE = 1/8" = 1' IN.		CHECKED -	REVISED -
PLOT DATE = 3/4/2019		DATE -	REVISED -

STATE OF ILLINOIS  
DEPARTMENT OF TRANSPORTATION

PAVEMENT MARKING DETAIL

SCALE:	SHEET NO. OF SHEETS	STA.	TO STA.
--------	---------------------	------	---------

F.A.S. RTE.	SECTION	COUNTY	TOTAL SHEETS	SHEET NO.
791	(17X-1504RS-1)	MARION	11	10
FED. ROAD DIST. NO. ILLINOIS FED. AID PROJECT			CONTRACT NO. 78061	



FILE NAME *	USER NAME = alfordb	DESIGNED -	REVISED -
ca:\pe_work\pedit\alfordb\08174886\0876	01-ahtrplendgn	DRAWN -	REVISED -
	PLOT SCALE = 100.0000' / IN.	CHECKED -	REVISED -
	PLOT DATE = 3/4/2018	DATE -	REVISED -

**STATE OF ILLINOIS  
DEPARTMENT OF TRANSPORTATION**

<b>PAVEMENT MARKING DETAIL</b>			
SCALE:	SHEET NO. OF SHEETS	STA. TO STA.	

F.A.S. RTE.	SECTION	COUNTY	TOTAL SHEETS	SHEET NO.
791	(17X-19DRS-1)	MARION	11	11
FED. ROAD DIST. NO.			ILLINOIS FED. AID PROJECT	
			CONTRACT NO. 78061	