

F.A.I. RTE.	SECTION	COUNTY	TOTAL SHEETS	SHEET NO.
270	60-2RS-3	MADISON	231	1
		ILLINOIS	CONTRACT NO. 76D87	

INDEX OF SHEETS

- 1 COVER SHEET
- 2 GENERAL NOTES & COMMITMENTS
- 3 WORK ZONE LANE RESTRICTIONS AND MIXTURE DESIGNS
- 4-8 SUMMARY OF QUANTITIES
- 9-14 TYPICAL SECTIONS
- 15-21 SCHEDULES OF QUANTITIES
- 22-24 ALIGNMENTS, TIES, AND BENCHMARKS
- 25 GENERAL LAYOUT
- 26-41 PLAN AND PROFILE SHEETS
- 42-48 SUGGESTED STAGES OF CONSTRUCTION AND TRAFFIC CONTROL
- 49-50 STORM WATER POLLUTION PREVENTION PLAN
- 51-60 EROSION AND SEDIMENT CONTROL DETAILS
- 61-63 PIPE UNDERDRAIN PROFILES
- 64-65 INTERSECTION DETAILS
- 66-70 PAVEMENT MARKING DETAILS
- 71-77 TRAFFIC SIGNAL DETAILS
- 78-79 TRAFFIC SIGNAL DETAILS - BORING LOGS
- 80-83 LIGHTING DETAILS
- 84-100 SIGNING DETAILS
- 101-102 INTERCHANGE GRADING DETAILS
- 103-112 REMOVAL DETAILS
- 113-135 SIGN STRUCTURE PLANS
- 136-141 SIGN STRUCTURE PLANS - BORING LOGS
- 142-145 SPECIAL DETAILS
- 146-231 CROSS SECTIONS
- HIGHWAY STANDARDS

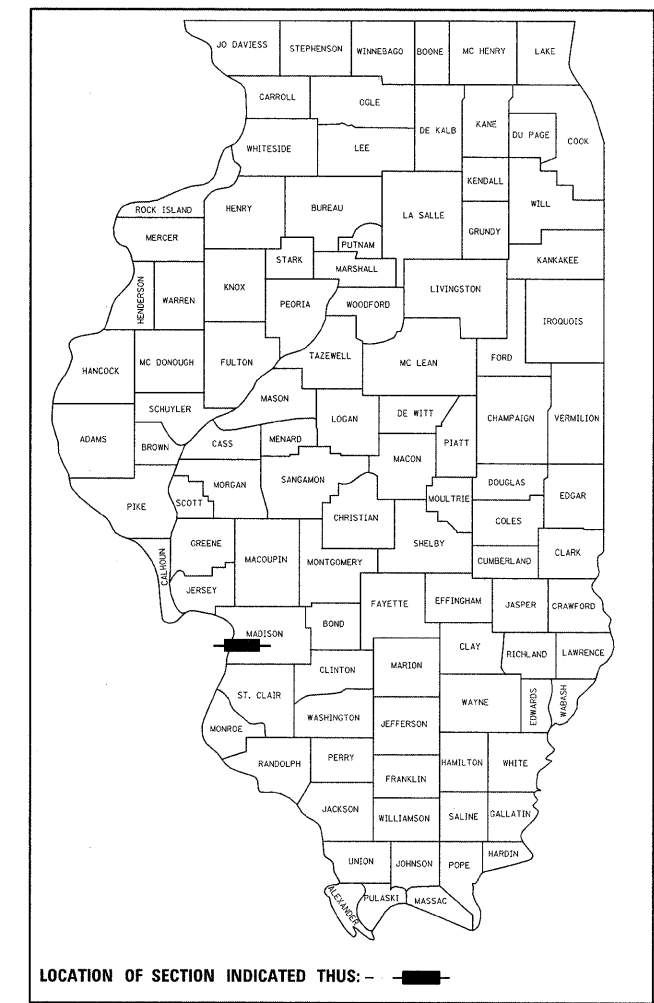
STATE OF ILLINOIS
DEPARTMENT OF TRANSPORTATION
DIVISION OF HIGHWAYS

PROPOSED
HIGHWAY PLANS

FAI ROUTE 270 (INTERSTATE 270)
SECTION 60-2RS-3

I-270 / IL 3 INTERCHANGE RECONSTRUCTION
MADISON COUNTY

D-98-055-10



IDOT HIGHWAY STANDARDS

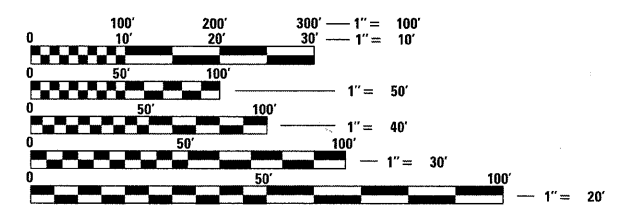
000001-05	602401-02	635001-01	701901-01	814006-02
001001-02	602601-02	635006-03	720001-01	836001
001006	602701-02	635011-02	720006-02	857001-01
280001-05	604101-01	642001-01	720011-01	873001-02
482001-02	606001-04	701101-02	720016-02	877001-04
482006-03	606301-04	701400-04	720021-02	878001-08
482011-03	630001-08	701401-05	728001-01	880006-01
542301-02	630201-06	701406-05	729001-01	886001-01
542546-01	630301-05	701421-02	780001-02	886006-01
601001-03	631011-06	701426-03	781001-03	
601101-01	631031-08	701451-01	805001-01	
602306-02	631033-03	701456	814001-02	

TRAFFIC DATA

I-270	IL 3
ADT = 54,700 (2007)	ADT = 19,100 (2009)
ADT = 68,800 (2030)	ADT = 23,500 (2030)
SU = 2.7%	SU = 7.3%
MU = 17.7%	MU = 7.6%

DESIGN DESIGNATION

FAI 270 (I-270) 65500(30) FREEWAY 7.90(FD-20)
 FAP 2 (IL 3) 18900(30) OTHER PRINCIPAL ARTERIAL 7.90(FD-20)

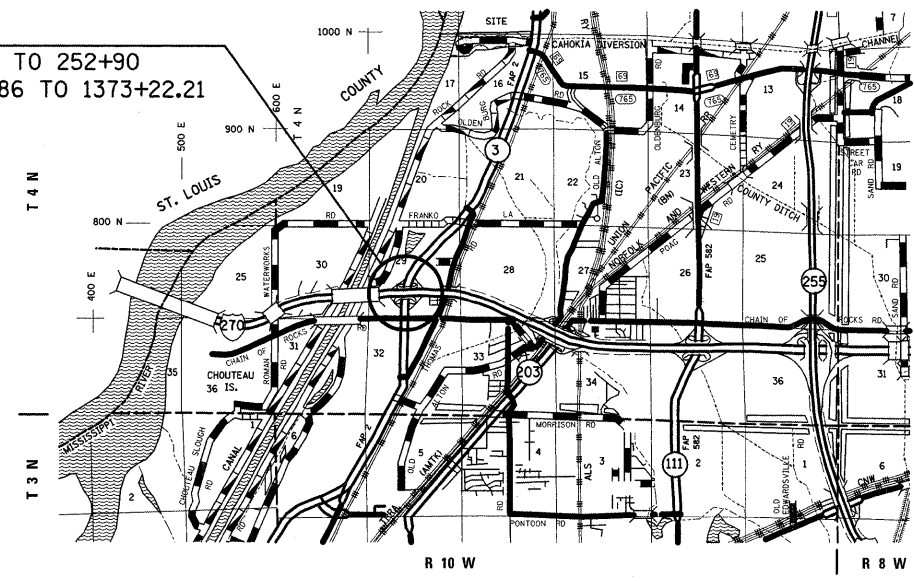


FULL SIZE PLANS HAVE BEEN PREPARED USING STANDARD ENGINEERING SCALES. REDUCED SIZED PLANS WILL NOT CONFORM TO STANDARD SCALES. IN MAKING MEASUREMENTS ON REDUCED PLANS, THE ABOVE SCALES MAY BE USED.

J.U.L.I.E.
JOINT UTILITY LOCATION INFORMATION FOR EXCAVATION
 1-800-892-0123
 OR 811

PROJECT LOCATION

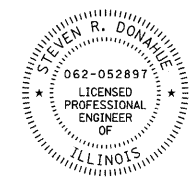
I-270 STA 225+00 TO 252+90
 IL 3 STA 1341+46.86 TO 1373+22.21



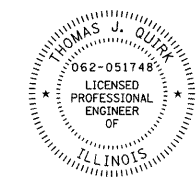
GROSS LENGTH = 0.53 MILES
 NET LENGTH = 0.53 MILES

SCALE
 1" = 1 MILE

LONGITUDE = 90.12341
 LATITUDE = 38.76732



Steven R. Donahue 3/16/10
 Steven R. Donahue, P.E.
 License Expires 11/30/2011
 My seal applies to sheets:



Thomas J. Quirk 3/16/10
 Thomas J. Quirk, P.E.
 License Expires 11/30/2011
 My seal applies to sheets:

PROJECT ENGINEER PATTI LEBEAU, P.E. 618-346-3179
PROJECT MANAGER BILLIE OWEN, P.E. 618-346-3189

CONTRACT NO. 76D87

1-60, 64-65, 71-77, 80-83, 101-102, 113-231

61-63, 66-70, 84-100, 103-112

PLANS PREPARED BY

HORNER & SHIFRIN, INC.
ENGINEERS
 640 Pierce Boulevard, Suite 200
 O'Fallon, Illinois 62269
 Phone: (618) 622-3040
 Illinois Professional Design Firm
 No. 184-000435
 License Expires 4/30/2011
 www.HornerShifrin.com

STATE OF ILLINOIS
DEPARTMENT OF TRANSPORTATION
DIVISION OF HIGHWAYS

SUBMITTED *March 17* 20 *10*

Mary C Jamie
 DEPUTY DIRECTOR OF HIGHWAYS, REGION 5 ENGINEER

May 7 20 *10*

Scott E. Stitt P.E. /a
 acting ENGINEER OF DESIGN AND ENVIRONMENT

May 7 20 *10*

Christine M. Reed /a
 DIRECTOR OF HIGHWAYS, CHIEF ENGINEER

PRINTED BY THE AUTHORITY
OF THE STATE OF ILLINOIS

USER NAME = sdonahue
 LAST SAVED = 3/15/2010
 PLOT DATE = 3/16/2010
 PLOT TIME = 7:23:34 AM
 PLOT SCALE = 50.000000 / IN.
 PEN TABLE = V8,tb1
 PLOT DRIVER = TR-Xerox6204-TopFile.plt
 FILE NAME = I:\B762602\090601\Cad\1\Plans\001_D876D87-Start-Cover.dgn