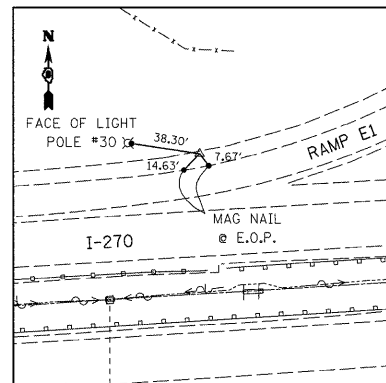
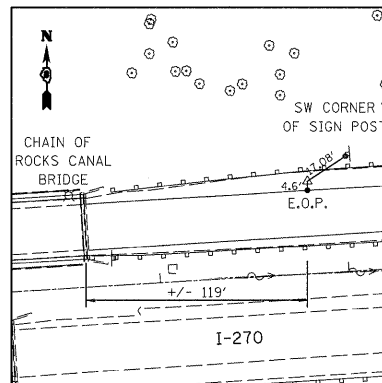


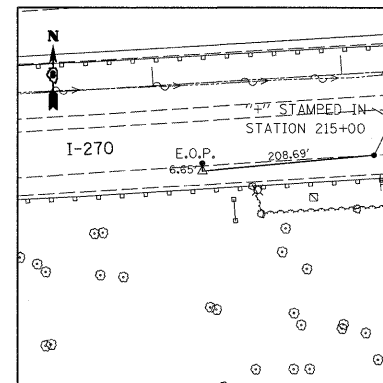
CP 129
MAG NAIL
764,813.8354 N
308,141.8341 E



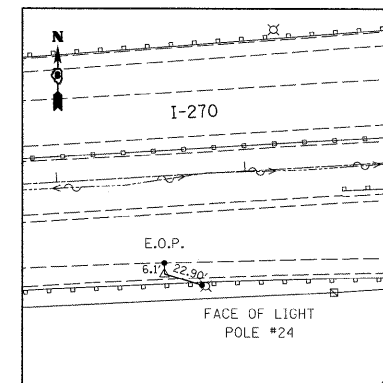
CP 140
MAG NAIL
764,520.2707 N
307,817.8707 E



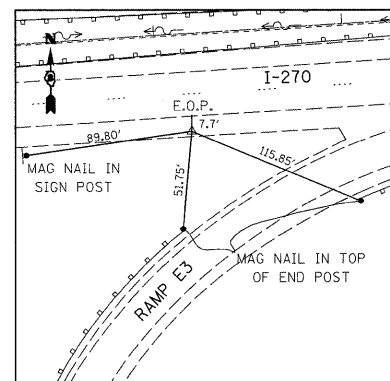
CP 141
MAG NAIL
764,437.6616 N
306,900.8146 E



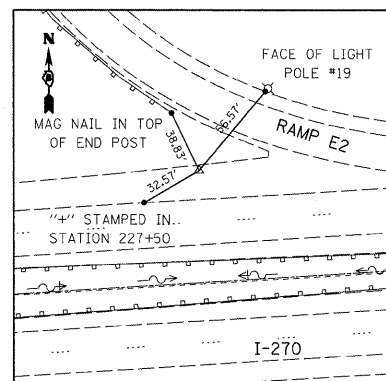
CP 167
MAG NAIL
764,338.5331 N
306,918.4650 E



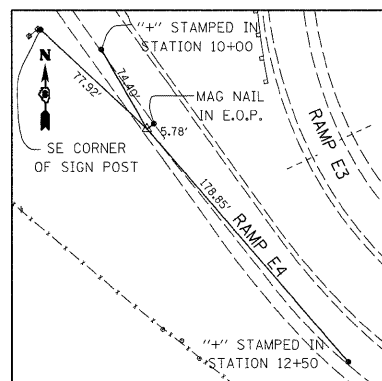
CP 168
MAG NAIL
764,372.6413 N
307,478.9808 E



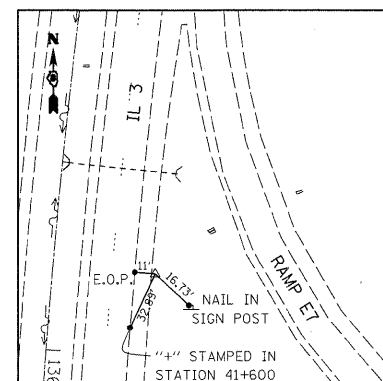
CP 169
MAG NAIL
764,432.4956 N
308,440.3051 E



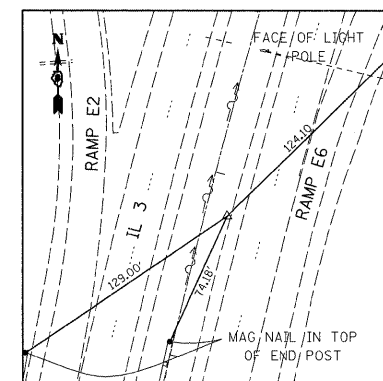
CP 170
MAG NAIL
764,540.9043 N
308,393.9480 E



CP 171
MAG NAIL
764,109.3309 N
308,287.7908 E



CP 172
IRON PIPE W/CAP
764,112.4277 N
308,895.3890 E



CP 173
IRON PIPE W/CAP
764,738.1971 N
308,959.8619 E

LAST SAVED = 3/13/2010
PEN TABLE = V6.tbl
PLOT DRIVER = TR-Xerox6204-10r1.epl

FILE NAME =	USER NAME = sdonahue	DESIGNED -	REVISED -
\\0906600\0906601\cod\plans\028.D87	0087-Sht-ATB-03.dgn	DRAWN -	REVISED -
	PLOT SCALE = 50.0023 ' / IN.	CHECKED -	REVISED -
	PLOT DATE = 3/16/2010 4:38:26 PM	DATE -	REVISED -

STATE OF ILLINOIS
DEPARTMENT OF TRANSPORTATION

HORNER & SHIFFRIN, INC.
ENGINEERS

ALIGNMENTS, TIES, AND BENCHMARKS

SCALE: 1" = 100' SHEET NO. 3 OF 3 SHEETS STA. TO STA.

F.A.I. RTE.	SECTION	COUNTY	TOTAL SHEETS	SHEET NO.
270	60-2RS-3	MADISON	231	24
CONTRACT NO. 76D87				
ILLINOIS FED. AID PROJECT				