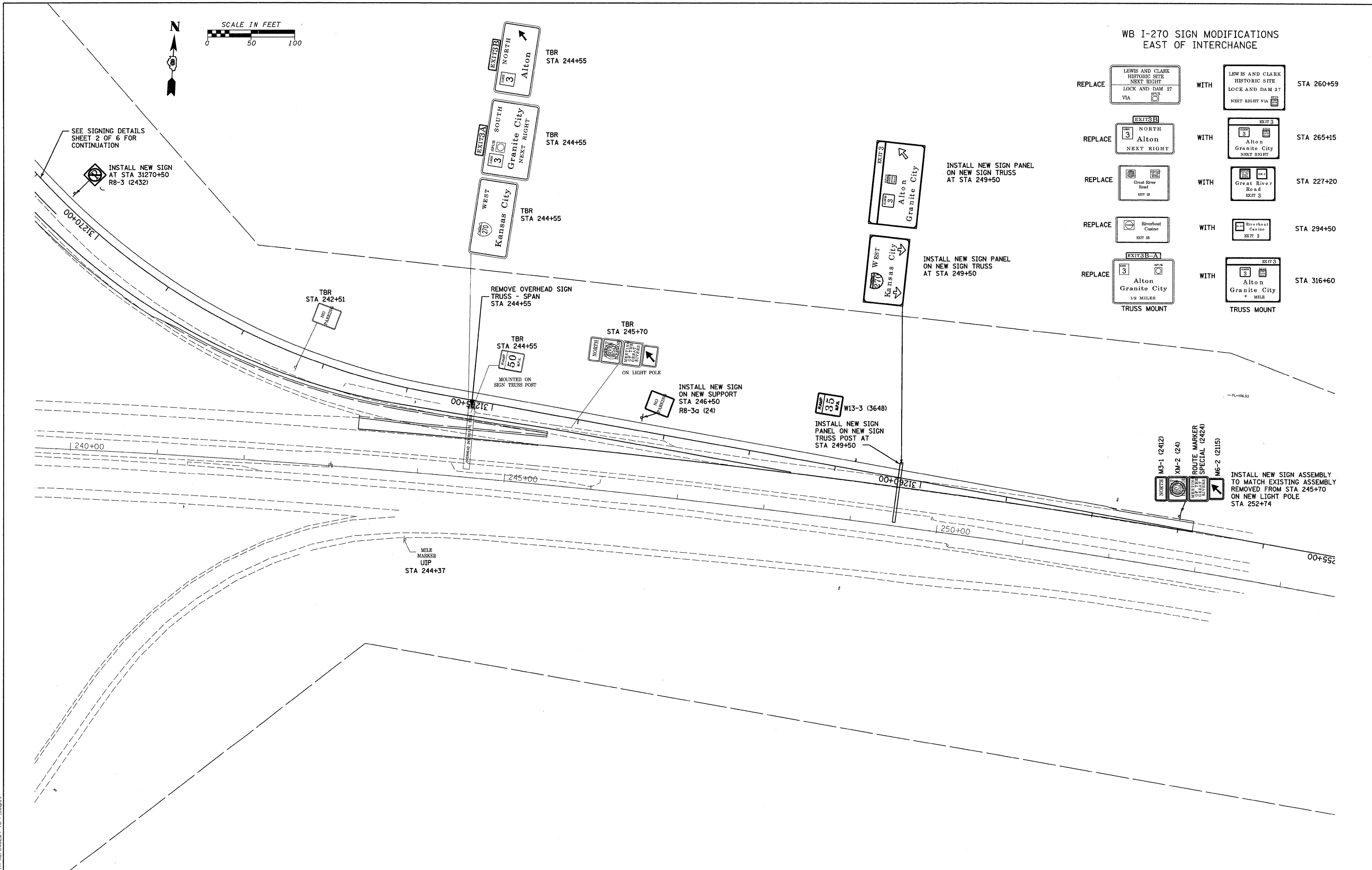


WB I-270 SIGN MODIFICATIONS
EAST OF INTERCHANGE

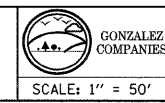
REPLACE		WITH		STA 260+59
REPLACE		WITH		STA 265+15
REPLACE		WITH		STA 227+20
REPLACE		WITH		STA 294+50
REPLACE		WITH		STA 316+60



LAST SAVED = 3/13/2010
 PEN TABLE = V6.tbl
 PLOT DRIVER = TR:Veris6284-TeFile.plt

FILE NAME =	USER NAME = sdonahue	DESIGNED -	REVISED -
t:\0906600\0906601\oad\t\plans\068.087\087-Sht-Sign-03.dgn		DRAWN -	REVISED -
PLOT SCALE = 50.0023' / IN.		CHECKED -	REVISED -
PLOT DATE = 3/16/2010 4:42:47 PM		DATE -	REVISED -

STATE OF ILLINOIS
 DEPARTMENT OF TRANSPORTATION



GONZALEZ COMPANIES
 SCALE: 1" = 50'
 SHEET NO. 3 OF 17 SHEETS
 STA. 1364+00 TO STA.

SIGNING DETAILS
 INTERSTATE 270

F.A.I. RTE.	SECTION	COUNTY	TOTAL SHEETS	SHEET NO.
270	60-2RS-3	MADISON	231	86
CONTRACT NO. 76D87				
ILLINOIS FED. AID PROJECT				