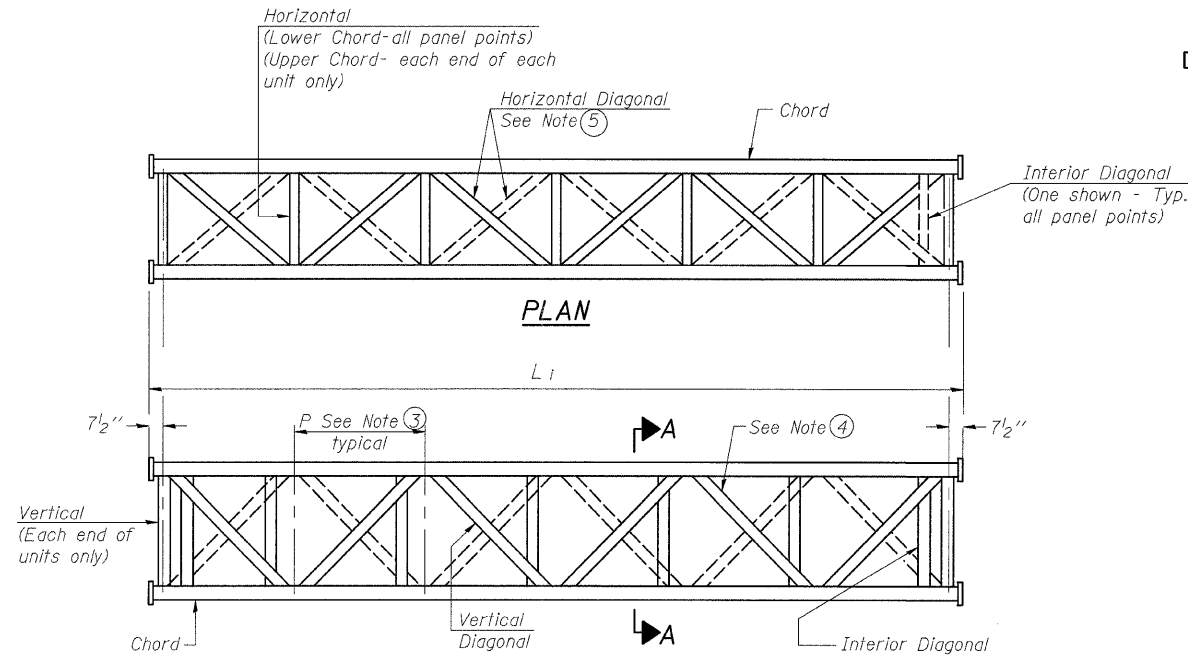
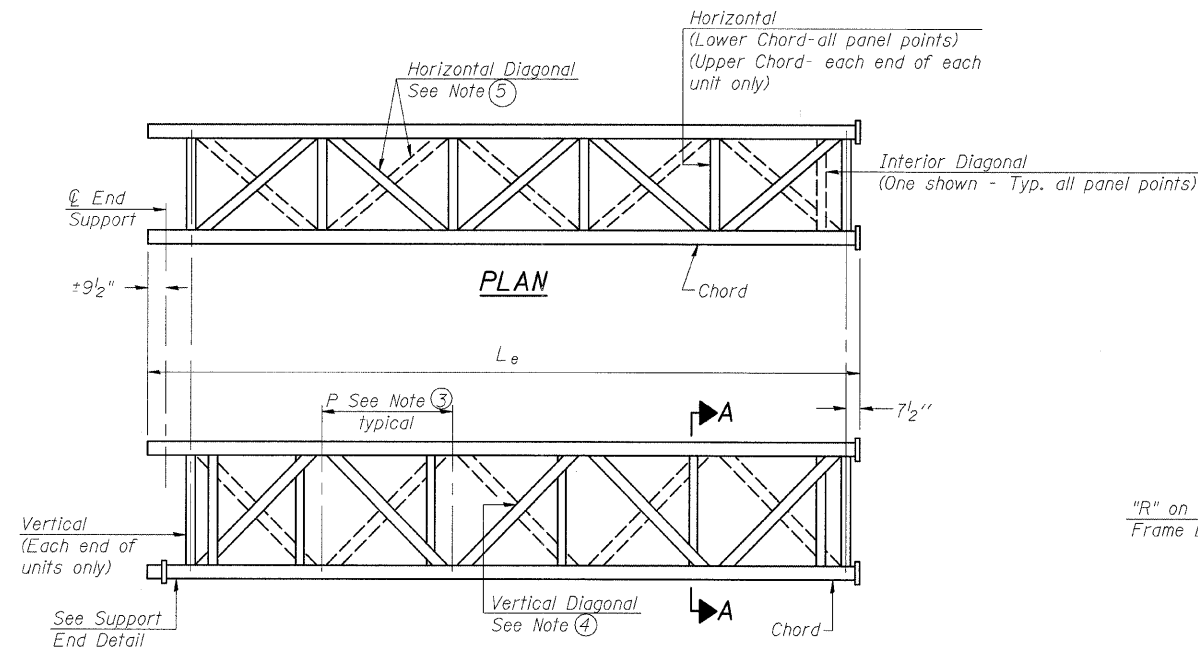


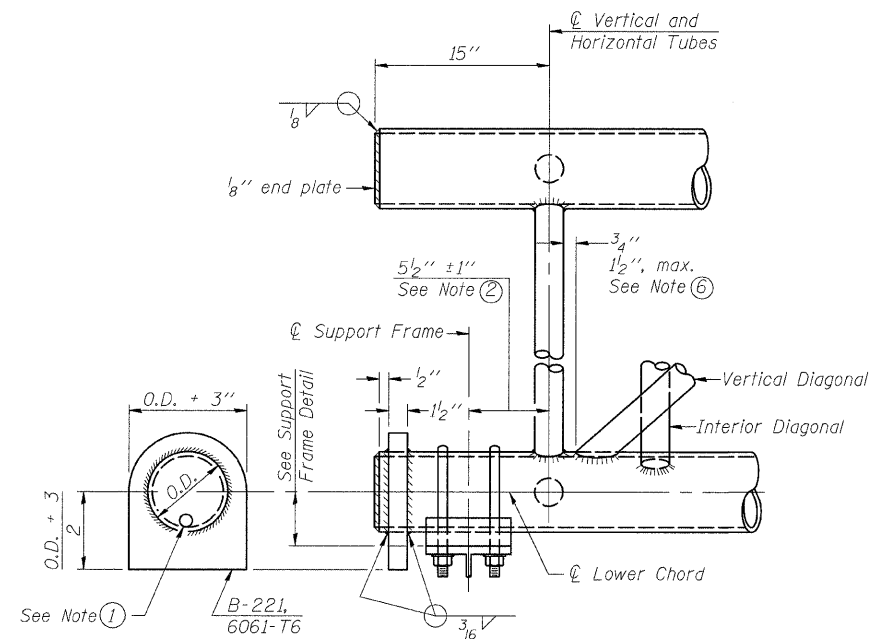
STATE OF ILLINOIS
DEPARTMENT OF TRANSPORTATION



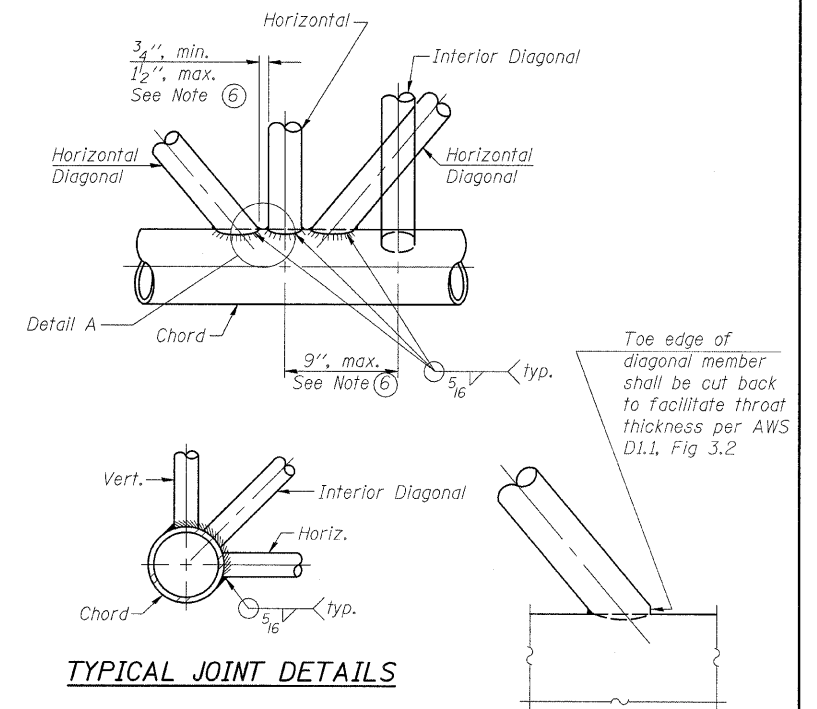
ELEVATION
TYPICAL INTERIOR UNIT
Even number of panels/interior unit required.



ELEVATION
TYPICAL EXTERIOR UNIT
Even or odd number of panels/interior units allowed.

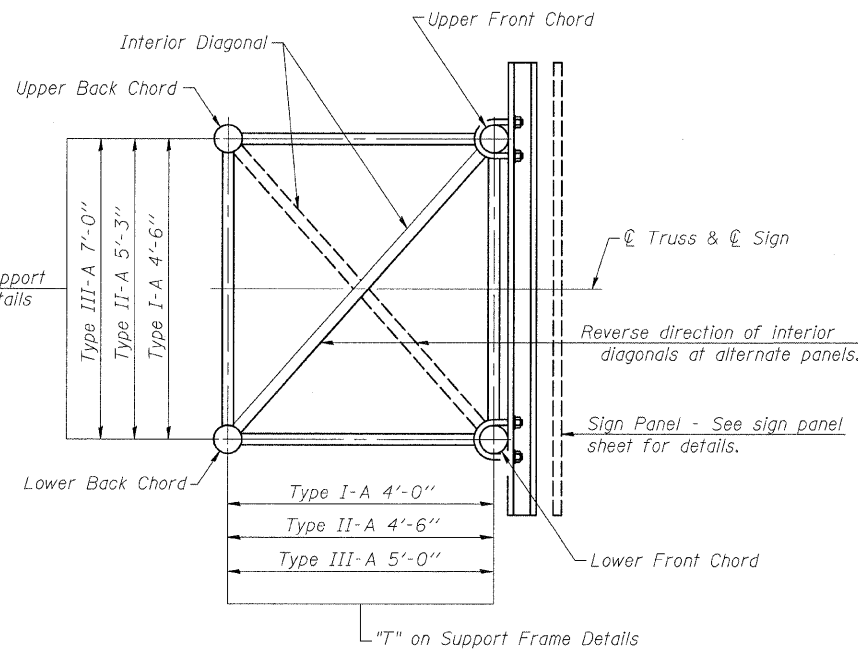


SUPPORT END DETAIL FOR EXTERIOR UNIT



TYPICAL JOINT DETAILS

DETAIL A



SECTION A-A

- ① Contractor may alternatively use standard aluminum drive-fit cap to close end. 1/2" ϕ drain hole in end plate/drive-fit cap. (Typ. at ends of all chords)
- ② 5 1/2" end dimension may vary by \pm 1" to provide uniform panel spacing (P).
- ③ Panel spacing (P) shall be uniform for entire truss and between 4'-0" and 5'-0" for Type I-A.
- ④ Vertical Diagonals in front and back face shall alternate.
- ⑤ Hidden lines show wind bracing alternates direction between planes of top and bottom chords.
- ⑥ All diagonals shall be detailed for minimum offset from the panel point based on the following: Offset shall be such as to provide a 3/4" minimum to 1 1/2" maximum clearance between any diagonal and any horizontal or vertical member, and to provide clearance for U-bolt connections of signs or walkway brackets.

DESIGNED	KLH
CHECKED	JJD
DRAWN	KLH
CHECKED	JJD

OS-A-2

12-1-08

NUMBER	REVISION	DATE

HORNER & SHIFRIN, INC.
ENGINEERS

SHEET NO. 2
14 SHEETS

OVERHEAD SIGN STRUCTURES
ALUMINUM TRUSS DETAILS
FOR TRUSS TYPES I-A, II-A AND III-A
F.A.I. ROUTE 270 (I-270), SEC. 60-2RS-3
MADISON COUNTY

F.A.I. RTE. 270	SECTION 60-2RS-3	COUNTY MADISON	TOTAL SHEETS 231	SHEET NO. 123
CONTRACT NO. 76D87			ILLINOIS FED. AID PROJECT	