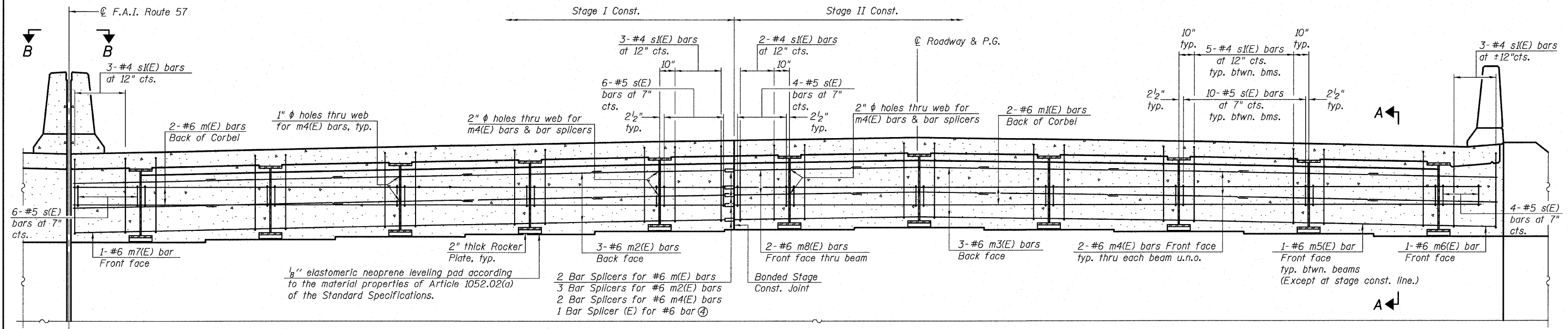
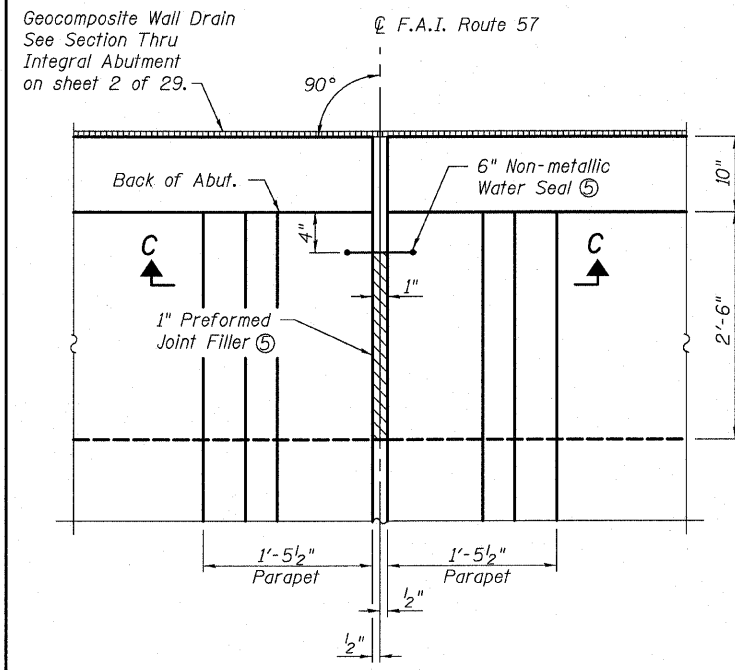


STATE OF ILLINOIS
DEPARTMENT OF TRANSPORTATION



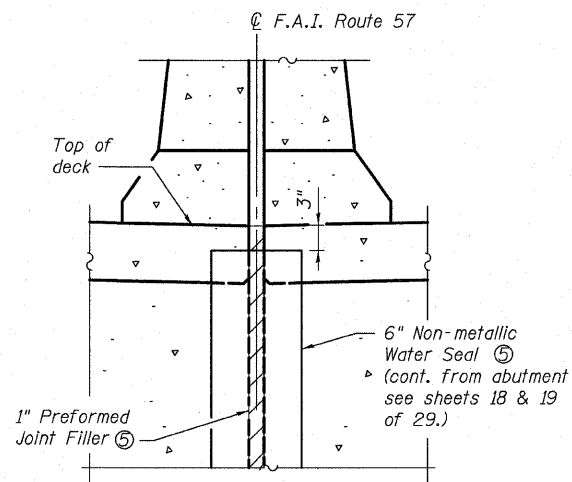
DIAPHRAGM ELEVATION AT ABUTMENT

(N.B. Looking North)
(S.B. Looking South)

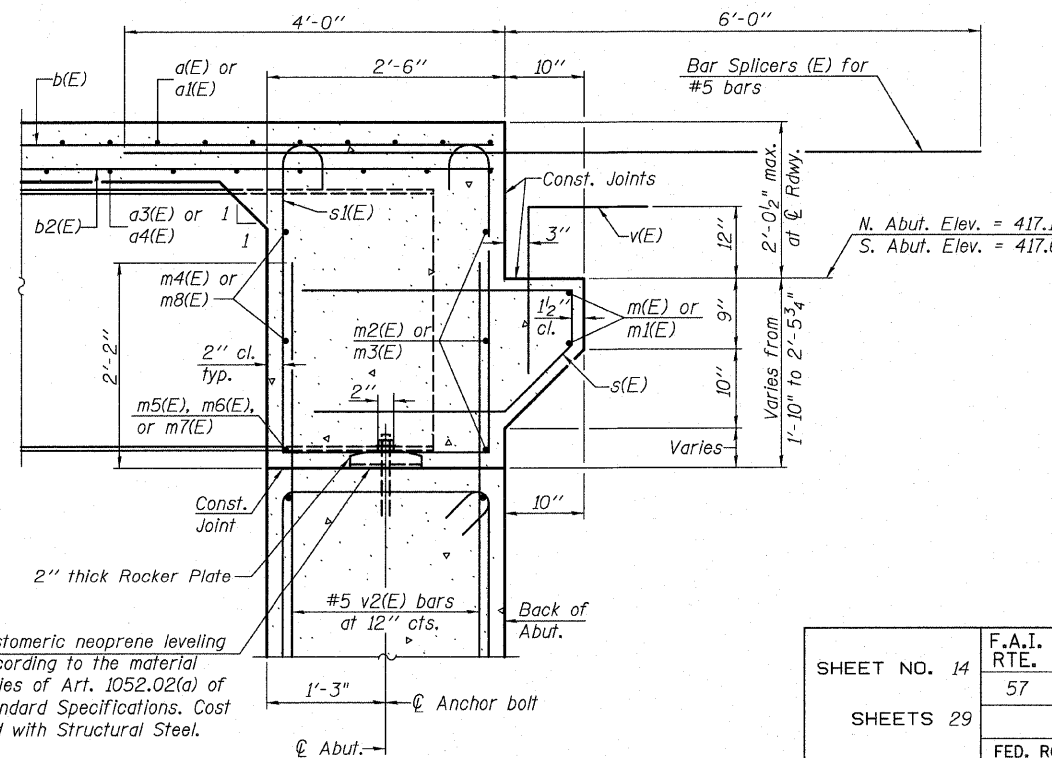


VIEW B-B

(See 1" Preformed Joint Filler (P.J.F.) Detail on Sheets 18 & 19 of 29)



VIEW C-C



SECTION A-A

1/8" elastomeric neoprene leveling pad according to the material properties of Art. 1052.02(a) of the Standard Specifications. Cost included with Structural Steel.

MIN. BAR LAP
#6 bar = 2'-7"

- Notes:
- Reinforcement bars in diaphragm are billed with superstructure on sheet 13 of 29.
 - Concrete in diaphragm is included with Concrete Superstructure on sheet 13 of 29.
 - The s(E) and s(E) bars shall be placed parallel to the beams. Spacing for these bars shall be at right angles to the beams.
 - Use bar splicer in place of m5(E) bar between beams at stage construction line.
 - Water seal shall be continuous from abutment cap through diaphragm. Cost of 1" preformed joint filler and 6" non-metallic water seal to be included with Concrete Structures.

DIAPHRAGM DETAILS
STRUCTURE NO. 028-0079 (N.B.)
STRUCTURE NO. 028-0080 (S.B.)

SHEET NO. 14	F.A.I. RTE.	SECTION	COUNTY	TOTAL SHEETS	SHEET NO.
	57	(28-5)VB-1	FRANKLIN	81	37
SHEETS 29	CONTRACT NO. 78157				
FED. ROAD DIST. NO. 7 ILLINOIS FED. AID PROJECT					



Eastport Business Center 1
100 Lanter Court, Suite 1
Collinsville, Illinois 62234
618-345-2200
Design Firm License No. 184.001115

DESIGNED JAD
CHECKED MJP
DRAWN JAD
CHECKED MJP