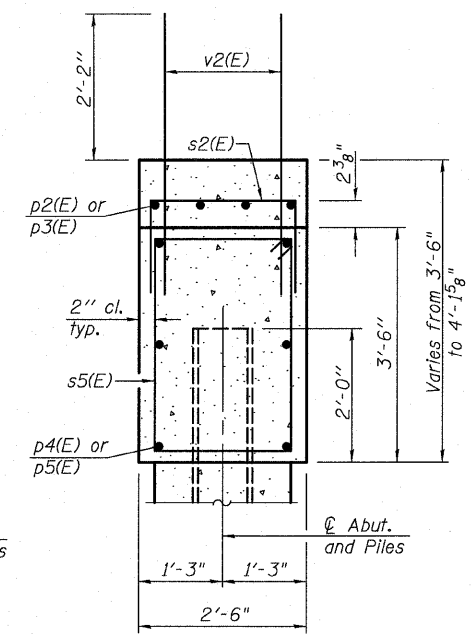
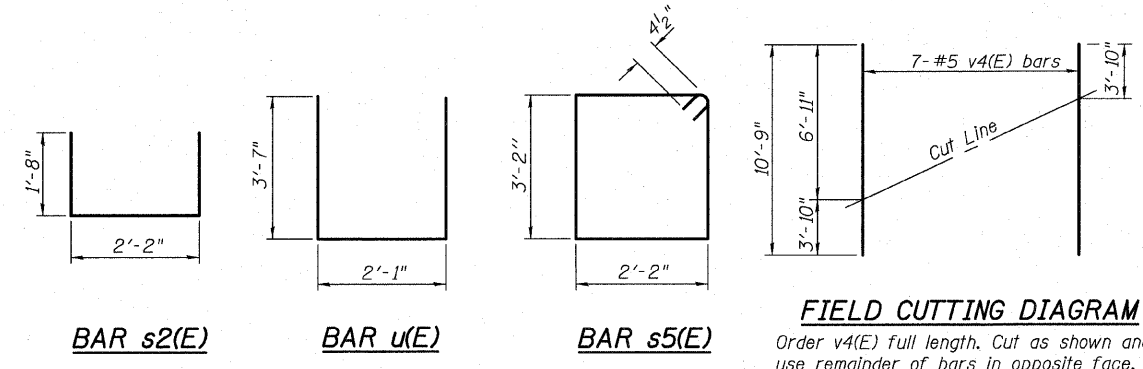
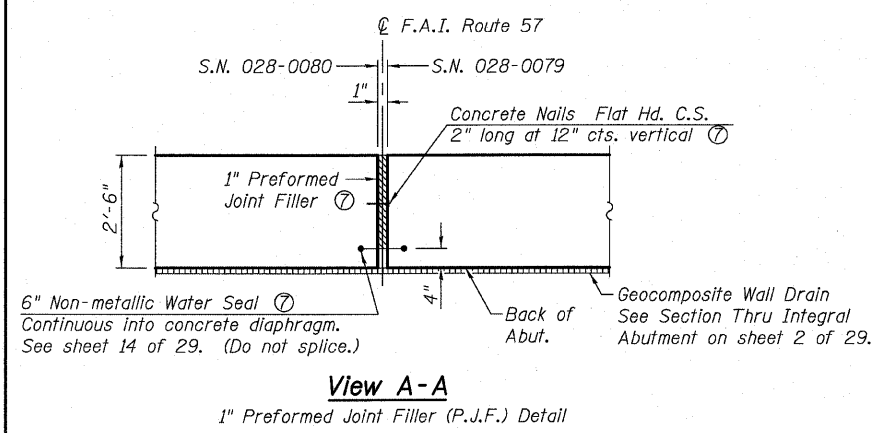
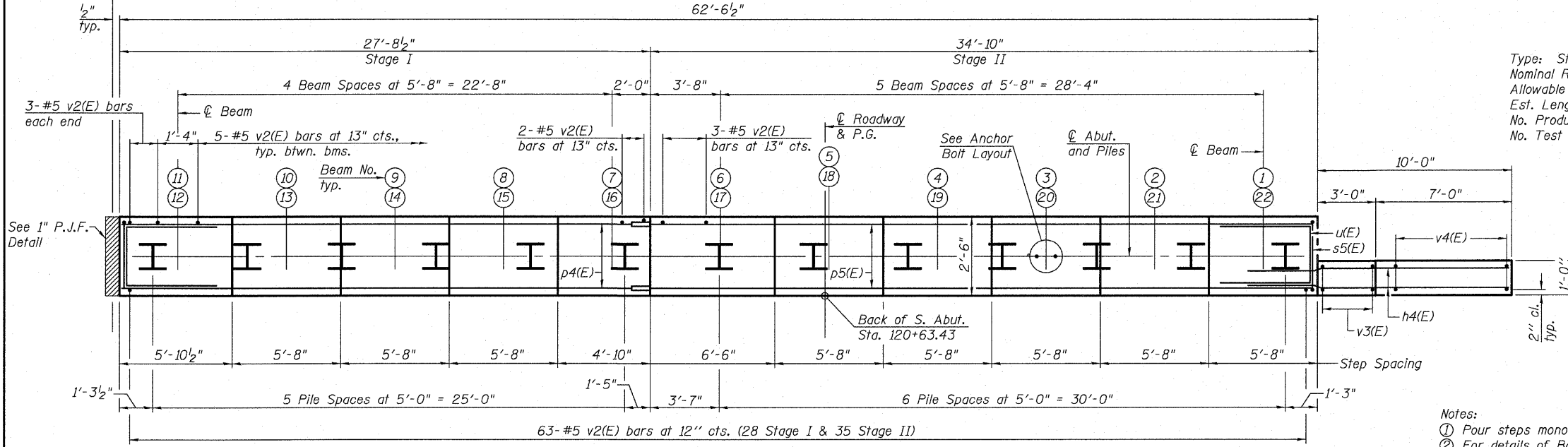
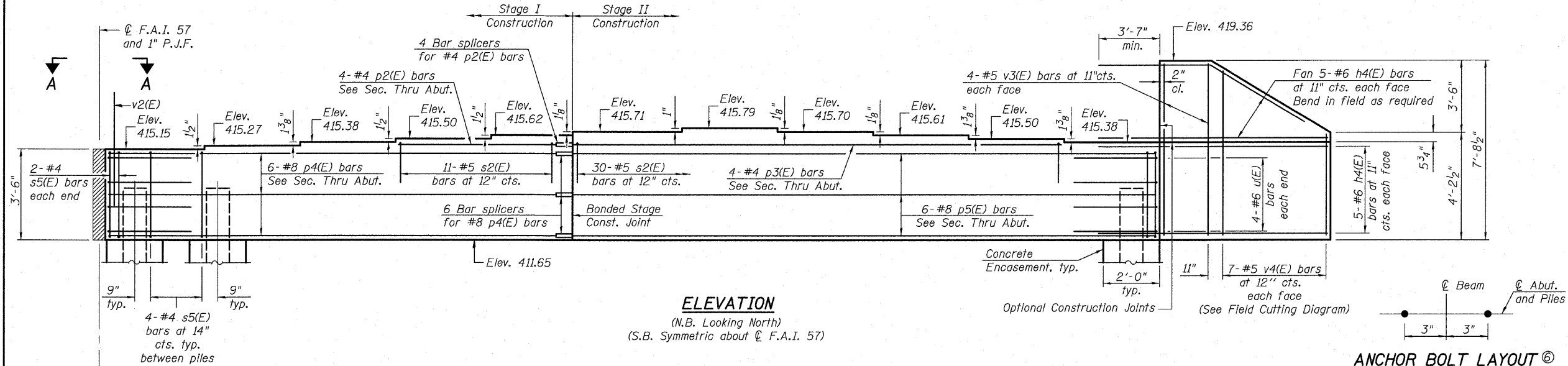


STATE OF ILLINOIS  
DEPARTMENT OF TRANSPORTATION



**PILE DATA**  
Type: Steel HP12x53  
Nominal Required Bearing: 419 kips  
Allowable Resistance Available: 139 kips  
Est. Length: 101'  
No. Production Piles: 25 (Both Structure)  
No. Test Piles: 1

**BILL OF MATERIAL**  
(Both Structures)

Bar	No.	Size	Length	Shape
h4(E)	40	#6	13'-5"	—
p2(E)	8	#4	10'-2"	—
p3(E)	8	#4	28'-10"	—
p4(E)	12	#8	27'-4"	—
p5(E)	12	#8	34'-6"	—
s2(E)	82	#5	5'-6"	□
s5(E)	104	#4	11'-5"	□
u(E)	16	#6	9'-3"	—
v2(E)	238	#5	4'-4"	—
v3(E)	16	#5	7'-4"	—
v4(E)	14	#5	10'-9"	—
Structure Excavation		Cu. Yd.	122	
Concrete Structures		Cu. Yd.	49.5	
Concrete Encasement		Cu. Yd.	9.1	
Reinforcement Bars, Epoxy Coated		Pound	5,840	
Furnishing Steel Piles, HP12x53		Foot	2,525	
Driving Piles		Foot	2,525	
Test Pile, HP12x53		Each	1	
Pile Shoes		Each	26	

- Notes:**
- ① Pour steps monolithically with cap.
  - ② For details of Bar Splicers, see sheet 22 of 29.
  - ③ For details of piles and Concrete Encasement, see sheet 21 of 29.
  - ④ All edges shall have standard  $\frac{3}{4}$ " chamfer.
  - ⑤ Place v2(E) bars to clear flange of beam.
  - ⑥ Space reinforcement in cap to miss anchor bolts.
  - ⑦ Cost to be included with Concrete Structures.

**SOUTH ABUTMENT DETAILS**  
**STRUCTURE NO. 028-0079 (N.B.)**  
**STRUCTURE NO. 028-0080 (S.B.)**

SHEET NO. 19	F.A.I. RTE.	SECTION	COUNTY	TOTAL SHEETS	SHEET NO.
	57	(28-5)VB-1	FRANKLIN	81	42
SHEETS 29					
CONTRACT NO. 78157					
FED. ROAD DIST. NO. 7 ILLINOIS FED. AID PROJECT					
			Eastport Business Center 1 100 Lanter Court, Suite 1 Collinsville, Illinois 62234 618-345-2200 Design Firm License No. 184.001115		
DESIGNED JAD			CHECKED NEL		
DRAWN JAD			CHECKED NEL		