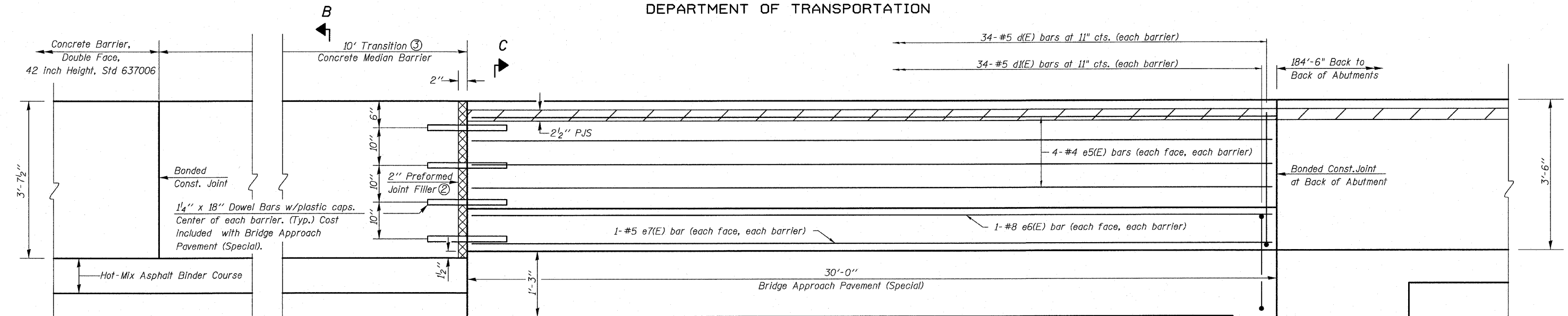
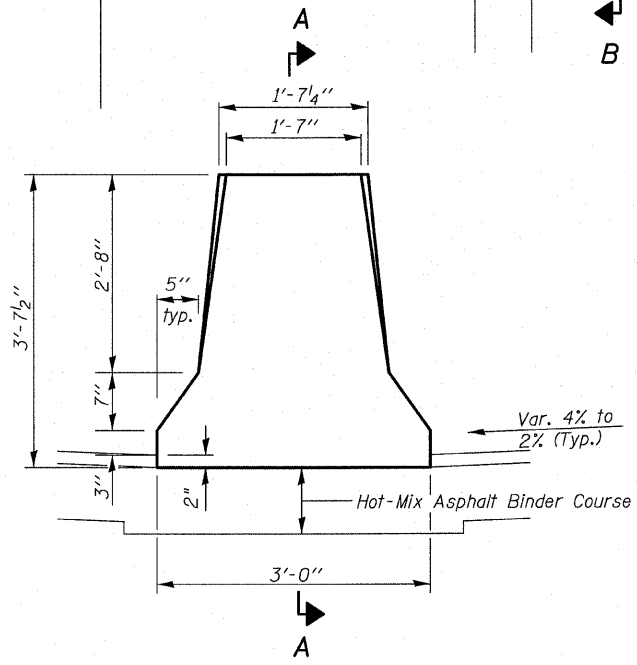


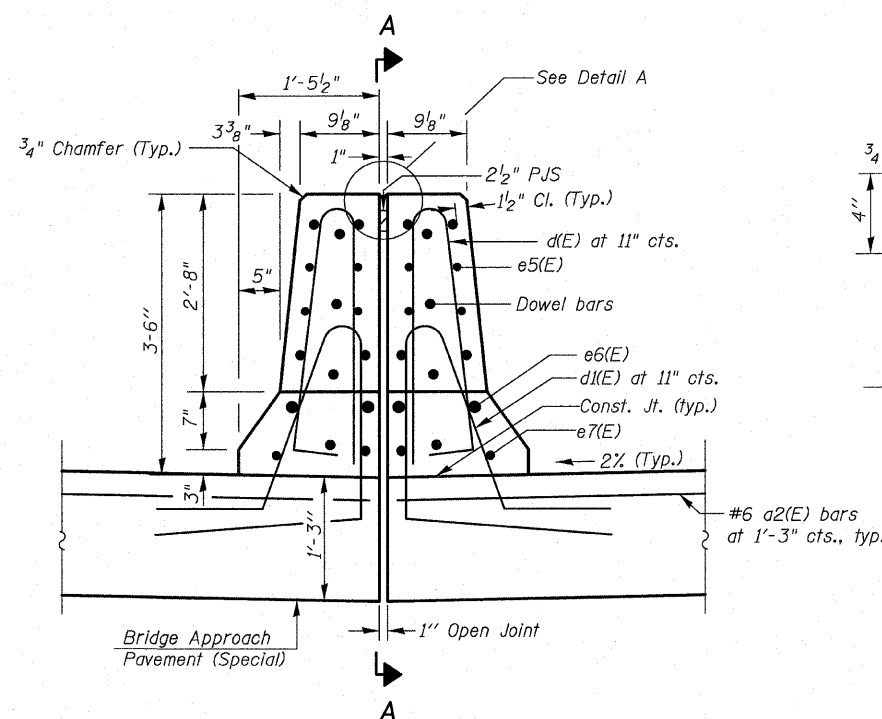
STATE OF ILLINOIS
DEPARTMENT OF TRANSPORTATION



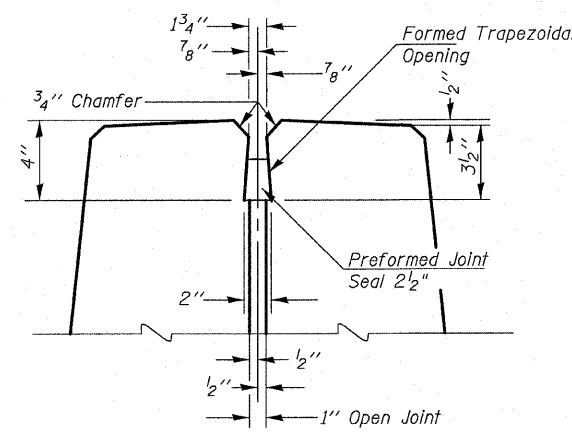
SECTION A-A THRU CENTERLINE OF CONCRETE MEDIAN BARRIER



SECTION B-B



SECTION C-C



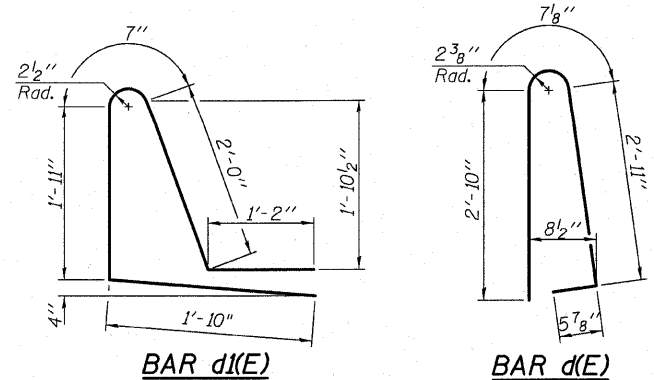
DETAIL A

BILL OF MATERIAL (4)

(For Information Only)
(Two Locations)

Bar	No.	Size	Length	Shape
a2(E)	100	#6	6'-0"	—
d(E)	136	#5	6'-10"	⏏
d1(E)	136	#5	7'-6"	⏏
e5(E)	32	#4	29'-8"	—
e6(E)	8	#8	29'-8"	—
e7(E)	8	#5	29'-8"	—
Preformed Joint Seal 2 1/2"	Foot		60	
Concrete Superstructure Reinforcement Bars, Epoxy Coated	Cu. Yd.		15.6	
	Lbs.		4,450	

MEDIAN BARRIER ON APPROACH
PAVEMENT DETAILS
STRUCTURE NO. 028-0079 (N.B.)
STRUCTURE NO. 028-0080 (S.B.)




BAR d1(E)

BAR d(E)

- Notes:
- Reinforcement bars designated (E) shall be epoxy coated.
 - See Section 1051 of the Standard Specifications. Cost included with Bridge Approach Pavement (Special).
 - The cost of the 10' transition concrete median barrier shall be included in the overall length measured for Concrete Barrier, Double Face, 42 Inch Height. See Section 637 of the Standard Specifications for additional requirements.
 - All items shown in the Bill of Material are for information only. Costs are included with Bridge Approach Pavement (Special). See roadway plans for Bridge Approach Pavement (Special) details and quantity.

SHEET NO. 23	F.A.I. RTE.	SECTION	COUNTY	TOTAL SHEETS	SHEET NO.
	57	(28-5)VB-1	FRANKLIN	81	46
SHEETS 29			CONTRACT NO. 78157		
FED. ROAD DIST. NO. 7 ILLINOIS FED. AID PROJECT					


OATES ASSOCIATES
 Consulting Engineers
 Eastport Business Center 1
 100 Lanter Court, Suite 1
 Collinsville, Illinois 62234
 618-345-2200
 Design Firm License No. 184.001115

DESIGNED JAD
 CHECKED JGS
 DRAWN JAD
 CHECKED JGS