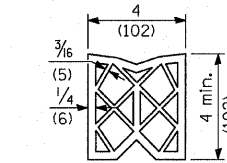
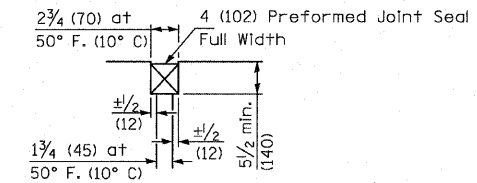


SECTION C-C

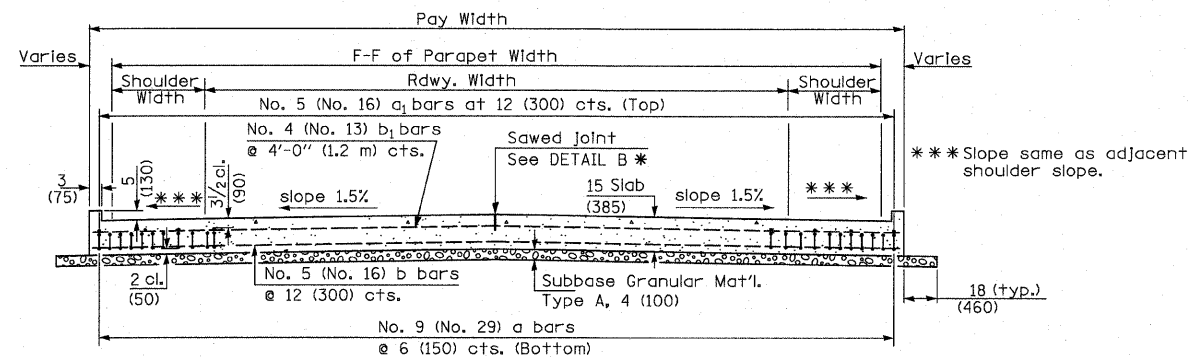
① Stagger No. 9 (No. 29) a bars as shown on plan - full width



PREFORMED JOINT SEAL



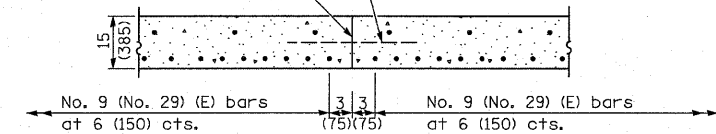
DETAIL A



SECTION D-D

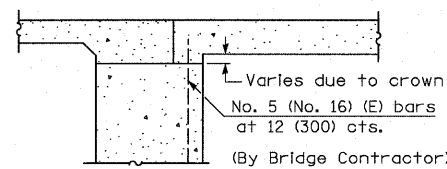
(See Plan for Dimensions not shown)

Longitudinal Construction Joint in accordance with details shown on Standard 420001.



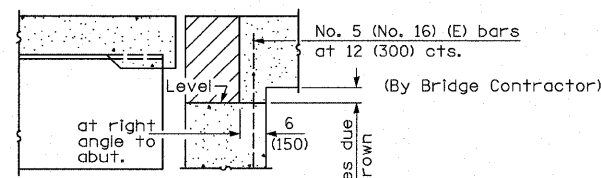
OPTIONAL LONGITUDINAL CONSTRUCTION JOINT

As approved by the Engineer, the Contractor may elect to reduce the widths of pour by use of the Optional Longitudinal Construction Joint shown. Joints shall be located at the edge of a traffic lane.



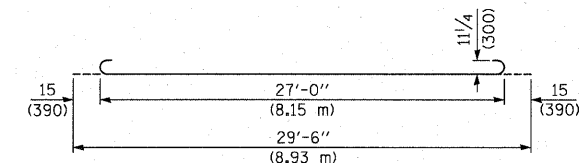
SECTION E-E

(Integral Abutments)

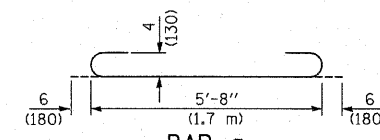


SECTION E-E

(Jointed Abutments)



BAR a



BAR a2

DESIGN STRESSES
 $f_y = 60,000$ p.s.i. (400 MPa)
 $f'_c = 3,500$ p.s.i. (24 MPa)
 $n = 8.5$

BRIDGE APPROACH PAVEMENT (SPECIAL)

FILE NAME = H:\P\25066p2\Technical_Production\Civil\	USER NAME = maisiegraser	DESIGNED -	REVISED -	STATE OF ILLINOIS DEPARTMENT OF TRANSPORTATION	DETAILS I-57 OVER 7TH ST / C&E RAILROAD			F.A.I. RTE.	SECTION	COUNTY	TOTAL SHEETS	SHEET NO.
	microstation\Sec285VB\details285vbdgn	DRAWN -	REVISED -		57	(28-5)VB-1	FRANKLIN	81	55			
	PLOT SCALE = 50,0000 / IN.	CHECKED -	REVISED -		CONTRACT NO. 78157							
	PLOT DATE = 3/15/2010	DATE -	REVISED -		FED. ROAD DIST. NO. ILLINOIS FED. AID PROJECT							
				SCALE:	SHEET NO.	OF SHEETS	STA.	TO STA.				