

F.A.I. RTE.	SECTION	COUNTY	TOTAL SHEETS	SHEET NO.
64	D9 SAFETY 2010-1	JEFFERSON & WHITE	26	1
		ILLINOIS	CONTRACT NO. 78192	

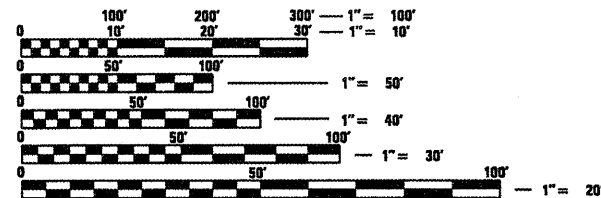
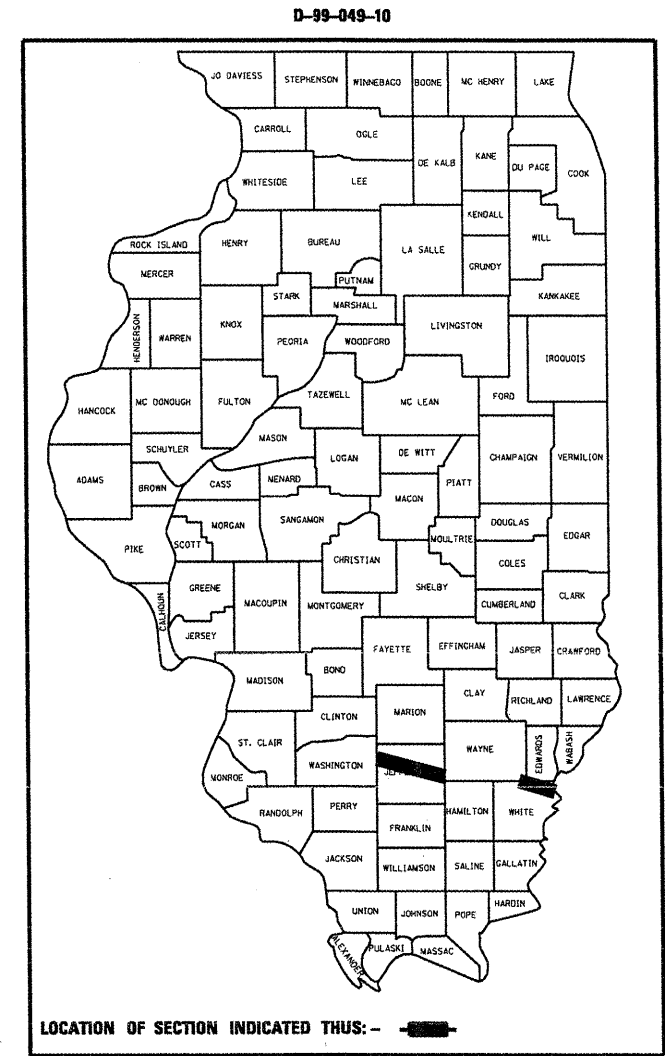
STATE OF ILLINOIS  
DEPARTMENT OF TRANSPORTATION  
DIVISION OF HIGHWAYS

**CENTER PIER PROTECTION**  
JEFFERSON COUNTY  
WHITE COUNTY  
15 LOCATIONS

**PROPOSED  
HIGHWAY PLANS**

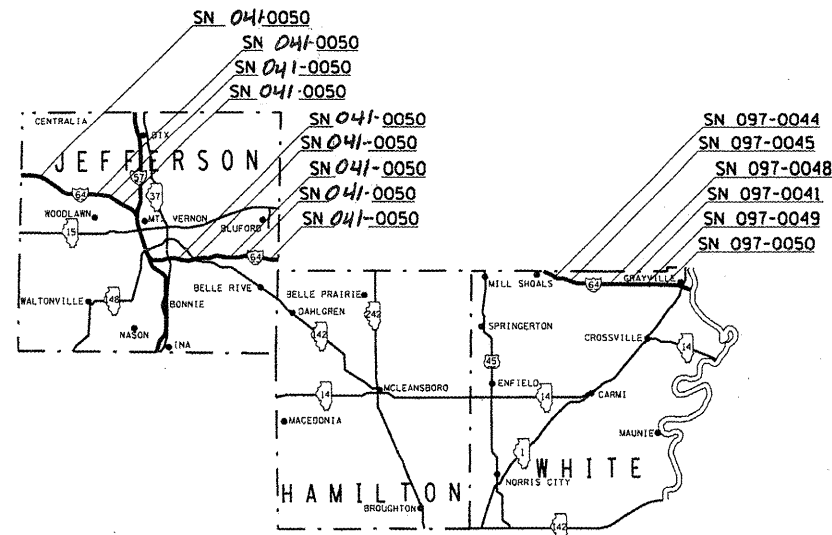
ROUTE I-64 (FAI 64)  
SECTION D9 SAFETY 2010-1  
PROJECT: ACH5IP-064-3(088)060  
SAFETY PROJECT  
COUNTIES JEFFERSON & WHITE

C-99-049-10



FULL SIZE PLANS HAVE BEEN PREPARED USING STANDARD ENGINEERING SCALES. REDUCED SIZED PLANS WILL NOT CONFORM TO STANDARD SCALES. IN MAKING MEASUREMENTS ON REDUCED PLANS, THE ABOVE SCALES MAY BE USED.

J.U.L.I.E.  
JOINT UTILITY LOCATION INFORMATION FOR EXCAVATION  
1-800-892-0123  
OR 811



PROJECT ENGINEER: CHARLES STEIN  
DESIGNER: RICK CORONADO

CONTRACT NO. 78192

STATE OF ILLINOIS  
DEPARTMENT OF TRANSPORTATION  
DIVISION OF HIGHWAYS

SUBMITTED March 5, 2010  
My Cramer  
DEPUTY DIRECTOR OF HIGHWAYS, REGION ENGINEER

May 7, 2010  
Scott E. Stitt, P.E.  
ENGINEER OF DESIGN AND ENVIRONMENT

May 7, 2010  
Christine M. Reed  
DIRECTOR OF HIGHWAYS, CHIEF ENGINEER

PRINTED BY THE AUTHORITY  
OF THE STATE OF ILLINOIS

Rev

Prepared By: *Joe Zlaniewicz*  
DISTRICT STUDIES & PLANS ENGINEER

Examined By: *James Eric Emery*  
DISTRICT LAND ACQUISITION ENGINEER

Examined By: *Carrie Nelson*  
DISTRICT PROGRAM DEVELOPMENT ENGINEER

Examined By: *Walt Kelly*  
DISTRICT OPERATIONS ENGINEER

Examined By: *Jim Smother*  
DISTRICT CONSTRUCTION ENGINEER

Examined By: *Bruce Peltola*  
DISTRICT MATERIALS ENGINEER

Examined By: *Jim Smother*  
DISTRICT PROJECT IMPLEMENTATION ENGINEER

Examined By: *Danny Clayton*  
ASSISTANT REGIONAL ENGINEER

Approved By: *Max Crane*  
DEPUTY DIRECTOR OF HIGHWAYS, REGION 5 ENGINEER

March 15 20 10  
DATE

FILE NAME =	USER NAME = stoverpg	DESIGNED -	REVISD -	<b>STATE OF ILLINOIS DEPARTMENT OF TRANSPORTATION</b>	<b>GENERAL NOTES HIGHWAY STANDARDS</b>	F.A.I. RTE.	SECTION	COUNTY	TOTAL SHEETS	SHEET NO.	
ca:\pwwork\PWIDOT\STOVERPG\d0182496\7812-shr-plan.dgn	PLOT SCALE = 100.0000' / IN.	DRAWN -	REVISD -			64	D9 SAFETY 2010-1	JEFFERSON & WHITE	26	2	
PLOT DATE = 3/15/2010	DATE -	CHECKED -	REVISD -			CONTRACT NO. 78192					
						ILLINOIS FED. AID PROJECT					

## INDEX OF SHEETS

SHEET NO.	DESCRIPTION
1	COVER SHEET
2	SIGNATURE SHEET
3	INDEX OF SHEETS, GENERAL NOTES, HIGHWAY STANDARDS, COMMITMENTS
4	SUMMARY OF QUANTITIES
5-6	SCHEDULES OF QUANTITIES
7-13	PLAN SHEETS
14-24	CONCRETE DETAILS
25-26	PROJECT DETAILS HIGHWAY STANDARDS

## GENERAL NOTES

EXISTING PIPE UNDERDRAIN OUTLETS AND DRAINAGE STRUCTURES IN THE MEDIAN SLOPES SHALL BE PRESERVED AND PROTECTED DURING CONSTRUCTION. ANY DAMAGE TO AN UNDERDRAIN OUTLET RESULTING FROM CONSTRUCTION ACTIVITY SHALL BE REPAIRED AT THE CONTRACTOR'S EXPENSE.

IN ADDITION TO THE REQUIREMENTS OF ARTICLE 107.16, THE CONTRACTOR SHALL PROTECT THE SURFACE OF ALL BRIDGE DECKS AND BRIDGE APPROACH PAVEMENTS IN A MANNER SATISFACTORY TO THE ENGINEER BEFORE ANY EQUIPMENT IS ALLOWED TO CROSS THE STRUCTURE. PROTECTION SHALL BE PROVIDED FOR ALL EQUIPMENT AS DEFINED IN ARTICLE 107.16 REGARDLESS IF TRACK MOUNTED OR WHEELED.

TWO APPLICATIONS OF TEMPORARY EROSION CONTROL SEEDING HAVE BEEN INCLUDED. THE ACTUAL QUANTITY, LOCATIONS, AND APPLICATIONS SHALL BE AS DIRECTED BY THE ENGINEER. THE APPLICATION RATE SHALL BE AS PER ARTICLE 280.04(f).

REVISE THE FIRST SENTENCE OF ARTICLE 107.09 PUBLIC CONVENIENCE AND SAFETY TO THE FOLLOWING "THE CONTRACTOR SHALL NOTIFY THE ENGINEER AT LEAST 14 DAYS IN ADVANCE OF STARTING ANY CONSTRUCTION WORK. THIS ADDITIONAL INFORMATION IS REQUIRED SO THAT THE PUBLIC CAN BE NOTIFIED OF THE PENDING CONSTRUCTION."

EXISTING PIPE UNDERDRAINS EFFECTED BY CONSTRUCTION SHALL BE ADJUSTED AND/OR INCORPORATED INTO THE PIPE CULVERT FOR DRAINAGE. THE COST FOR THIS WORK SHALL BE INCLUDED IN THE UNIT PRICE FOR ATTENUATOR BASE.

THE 1/4" PLATE STEEL SHOWN IN THE ATTENUATOR BASE DRAIN DETAIL SHALL BE INCLUDED IN THE UNIT PRICE FOR ATTENUATOR BASE.

## HIGHWAY STANDARDS

000001-05  
001001-02  
001006  
202001-01  
280001-05  
542301-02  
601001-03  
601101-01  
630001-08  
631011-06  
635006-03  
635011-02  
701101-02  
701106-02  
701400-04  
701406-05  
701901-01

## COMMITMENTS

NONE

FILE NAME =	USER NAME = stoverpg	DESIGNED -	REVISED -	<b>STATE OF ILLINOIS DEPARTMENT OF TRANSPORTATION</b>	----- ----- -----	F.A.I. RTE.	SECTION	COUNTY	TOTAL SHEETS	SHEET NO.
c:\pwork\FW100T\STOVERPG\0182496\7812-sht-plen.dgn	PLOT SCALE = 100.0000' / IN.	DRAWN -	REVISED -			64	DS SAFETY 2010-1	JEFFERSON & WHITE	26	3
PLOT DATE = 3/15/2010	CHECKED -	REVISED -	SCALE: _____ SHEET NO. _____ OF _____ SHEETS STA. _____ TO STA. _____			<b>CONTRACT NO. 78192</b>				
	DATE -	REVISED -	ILLINOIS FED. AID PROJECT							

# SUMMARY OF QUANTITIES

CODE NUMBER	ITEM DESCRIPTION CONSTRUCTION TYPE CODE	UNIT	90% FED/10% STATE		
			TOTAL QUANTITY	JEFFERSON COUNTY	WHITE COUNTY
				1-64	1-64
			SFTY-3N	SFTY-3N	
Z0002005	ATTENUATOR BASE	SQ. YD.	1,386	891	495
Z0030150	IMPACT ATTENUATORS (NON-REDIRECTIVE), TEST LEVEL 3	EACH	28	18	10
Z0400800	FURNISHED EXCAVATION	CU YD.	7,164	5233	1931
* 25000350	SEEDING, CLASS 7	ACRE	7.2	4.7	2.5
* 25000400	NITROGEN FERTILIZER NUTRIENT	POUND	1152	752	400
* 25000500	PHOSPHORUS FERTILIZER NUTRIENT	POUND	864	564	300
* 25000600	POTASSIUM FERTILIZER NUTRIENT	POUND	864	564	300
* 25000700	AGRICULTURAL GROUND LIMESTONE	TON	14.4	9.4	5.0
* 25000200	SEEDING, CLASS 2	ACRE	7.2	4.7	2.5
* 25100115	MULCH, METHOD 2	ACRE	14.4	9.4	5.0
28000250	TEMPORARY EROSION CONTROL SEEDING	POUND	1,440	940	500
28000305	TEMPORARY DITCH CHECKS	FOOT	270	150	120
28000500	INLET AND PIPE PROTECTION	EACH	6	5	1
50300225	CONCRETE STRUCTURES	CU YD.	85	59.8	25.2
50800205	REINFORCEMENT BARS, EPOXY COATED	POUND	6840	4680	2160
542A0223	PIPE CULVERTS, CLASS A, TYPE 1 18"	FOOT	1,060	1,060	
542A0229	PIPE CULVERTS, CLASS A, TYPE 1 24"	FOOT	600	300	300
54213663	PRECAST REINFORCED CONCRETE FLARED ENDSECTIONS 18"	EACH	8	8	
54213669	PRECAST REINFORCED CONCRETE FLARED ENDSECTIONS 24"	EACH	4	2	2
63000001	STEEL PLATE BEAM GUARD RAIL, TYPE A	FOOT	875		875
63100045	TRAFFIC BARRIER TERMINAL, TYPE 2	EACH	2		2
63100167	TRAFFIC BARRIER TERMINAL, TYPE 1 (SPECIAL) TANGENT	EACH	2		2
67000400	ENGINEERS FIELD OFFICE, TYPE A	CAL MO	4	2	2
67100100	MOBILIZATION	L SUM	1	0.6	0.4
70100700	TRAFFIC CONTROL AND PROTECTION, STANDARD 701406	L SUM	1	0.6	0.4
70106800	CHANGEABLE MESSAGE SIGN	CAL MO	3	2	1
78200405	GUARDRAIL MARKERS	EACH	12		12
78201000	TERMINAL MARKER - DIRECT APPLIED	EACH	2		2

FILE NAME =	USER NAME = shepardgd	DESIGNED - ---	REVISED - ---
ca:\pw\work\PMIDOT\SHEPARDD\0182496\78192-sht-misc.dgn		DRAWN - ---	REVISED - ---
PLOT SCALE = 1/32" = 1/8" / IN.		CHECKED - ---	REVISED - ---
PLOT DATE = 3/18/2010		DATE - ---	REVISED - ---

**STATE OF ILLINOIS  
DEPARTMENT OF TRANSPORTATION**

**SUMMARY OF QUANTITIES**

SCALE: \_\_\_\_\_ SHEET NO. \_\_\_ OF \_\_\_ SHEETS STA. \_\_\_\_\_ TO STA. \_\_\_\_\_

*\*Specialty Items*

*Rev.*

SECTION	COUNTY	TOTAL SHEETS	SHEET NO.
09 SAFETY 2010-1		26	4
JEFFERSON & WHITE		CONTRACT NO. 78192	
ILLINOIS FED. AID PROJECT			

# PIER PROTECTION SCHEDULE

STRUCTURE NUMBER	ROUTE	STATION	SAND MODULE IMPACT ATTENUATOR	ATTENUATOR BASE	FURNISHED EXCAVATION	REINFORCEMENT BARS, EPOXY COATED	CONCRETE STRUCTURES
			EACH	SQ YD	CU YD	POUND	CU YD
WHITE COUNTY							
097-0044	I-64	4687+40.00	2	99	216	480	5.5
097-0045	I-64	5265+14.6	2	99	1016	480	5.7
097-0048	I-64	5398+61.0	2	99	185	330	3.6
097-0049	I-64	5625+97.0	2	99	174	500	6.0
097-0050	I-64	5217+63.4	2	99	341	370	4.4
WHITE COUNTY TOTALS			10	495	1931	2160	25.2
JEFFERSON COUNTY							
041-0062	I-64	2857+33.3	2	99	1085	840	10.2
041-0063	I-64	2934+27.7	2	99	104		
041-0064	I-64	3409+20.9	2	99	988	730	10.8
041-0065	I-64	3228+06.9	2	99	237		
041-0066	I-64	2824+94.8	2	99	995		
041-0069	I-64	2137+99.7	2	99	160	1520	19.9
041-0072	I-64	3068+62.53	2	99	265	500	6.0
041-0079	I-64	2266+00.55	2	99	1069	590	7.3
041-0080	I-64	2343+00	2	99	330	500	5.6
JEFFERSON COUNTY TOTALS			18	891	5233	4680	59.8
PROJECT TOTALS			28	1386	7164	6840	85.0

# SEEDING SCHEDULE

LOCATION	SEEDING CLASS 2	SEEDING CLASS 7	NITROGEN FERTILIZER NUTRIENTS		PHOSPHORUS FERTILIZER NUTRIENTS	POTASSIUM FERTILIZER NUTRIENTS	AGRICULTURAL GROUND LIMESTONE	MULCH METHOD 2 FOR CLASS 2	MULCH METHOD 2 FOR CLASS 7	TEMPORARY DITCH CHECKS	TEMPORARY EROSION CONTROL SEEDING
			CLASS 2	CLASS 7							
	ACRE	ACRE	POUND	POUND	POUND	POUND	TON	ACRE	ACRE	FOOT	POUND
WHITE COUNTY											
097-0048	I-64	0.3	36	12	36	36	0.6	0.3	0.3	30	60
097-0045	I-64	0.5	60	20	60	60	1.0	0.5	0.5		100
097-0044	I-64	0.5	60	20	60	60	1.0	0.5	0.5	30	100
097-0049	I-64	0.5	60	20	60	60	1.0	0.5	0.5	30	100
097-0050	I-64	0.7	84	28	84	84	1.4	0.7	0.7	30	140
WHITE COUNTY TOTAL		2.5	300.0	100.0	300.0	300.0	5.0	2.5	2.5	120.0	500.0
JEFFERSON COUNTY											
041-0063	I-64	0.5	60	20	60	60	1.0	0.5	0.5	30	100
041-0064	I-64	0.5	60	20	60	60	1.0	0.5	0.5		100
041-0065	I-64	0.5	60	20	60	60	1.0	0.5	0.5	30	100
041-0066	I-64	0.6	72	24	72	72	1.2	0.6	0.6		120
041-0069	I-64	0.6	72	24	72	72	1.2	0.6	0.6	30	120
041-0072	I-64	0.4	48	16	48	48	0.8	0.4	0.4	30	80
041-0079	I-64	0.5	60	20	60	60	1.0	0.5	0.5		100
041-0062	I-64	0.5	60	20	60	60	1.0	0.5	0.5		100
041-0080	I-64	0.6	72	24	72	72	1.2	0.6	0.6	30	120
JEFFERSON COUNTY TOTAL		4.7	564.0	188.0	564.0	564.0	9.4	4.7	4.7	150.0	940.0
TOTALS		7.2	864	288	864	864	14.4	7.2	7.2	270	1440

FILE NAME =	USER NAME = #USER#	DESIGNED - ---	REVISED - ---	<b>STATE OF ILLINOIS DEPARTMENT OF TRANSPORTATION</b>	<b>SEEDING AND PIER PROTECTION SCHEDULES</b>	F.A.I. RTE.	SECTION	COUNTY	TOTAL SHEETS	SHEET NO.
#FILE#		DRAWN - ---	REVISED - ---			64	D9 SAFETY 2010-1	*	26	5
		CHECKED - ---	REVISED - ---			SCALE: ----- SHEET NO. ___ OF ___ SHEETS STA. ----- TO STA. -----		*JEFFERSON & WHITE		CONTRACT NO. 78192
		DATE - -----	REVISED - -----			ILLINOIS FED. AID PROJECT				

# GUARDRAIL SCHEDULE

LOCATION STATION TO STATION	SPBGR TYPE A FOOT	TRAFFIC BARRIER TERMINAL		GUARDRAIL MARKERS		TERMINAL MARKERS DIRECT APPLIED EACH	COMMENTS
		TY 1, SPL (TAN) EACH	TYPE 2 EACH	AMBER EACH	SILVER EACH		
<b>EASTBOUND</b>							
5490+07.5 TO 5490+57.50		1				1	SN 097-0041
5490+57.5 TO 5494+95.00	437.50		1	6			SN 097-0041
<b>EASTBOUND TOTALS</b>	<b>437.50</b>	<b>1</b>	<b>1</b>	<b>6</b>	<b>0</b>	<b>1</b>	

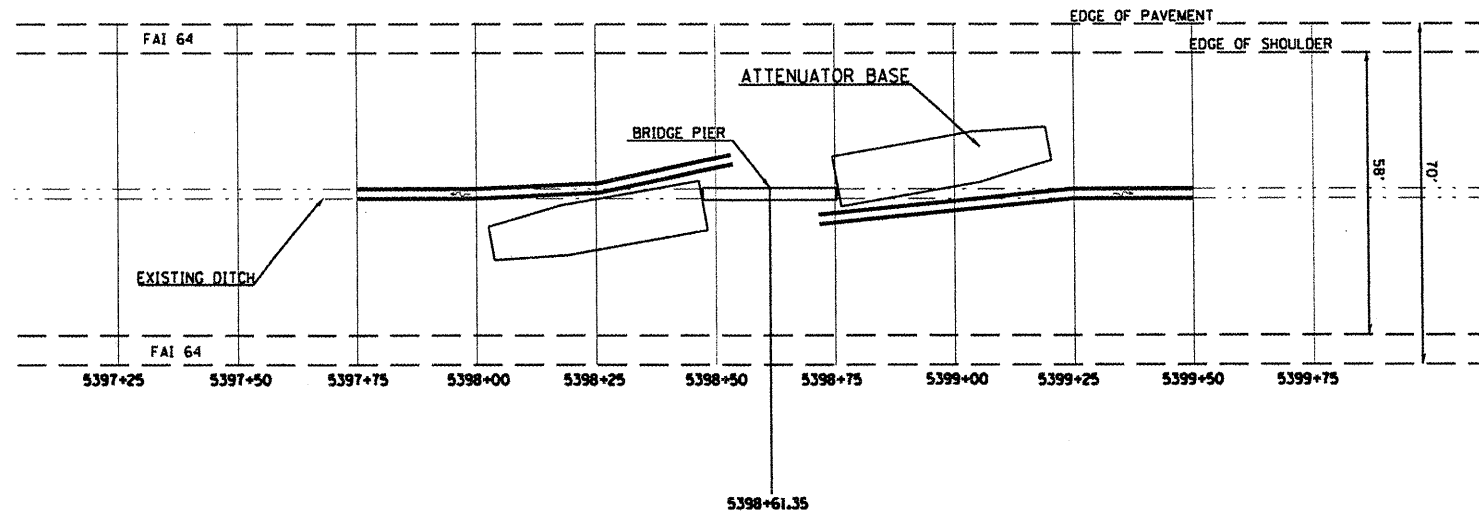
LOCATION STATION TO STATION	SPBGR TYPE A FOOT	TRAFFIC BARRIER TERMINAL		GUARDRAIL MARKERS		TERMINAL MARKERS DIRECT APPLIED EACH	COMMENTS
		TY 1, SPL (TAN) EACH	TYPE 2 EACH	AMBER EACH	SILVER EACH		
<b>WESTBOUND</b>							
5494+95.0 TO 5499+32.50	437.50		1	6			SN 097-0041
5499+32.5 TO 5499+82.50		1				1	SN 097-0041
<b>WESTBOUND TOTALS</b>	<b>437.50</b>	<b>1</b>	<b>1</b>	<b>6</b>	<b>0</b>	<b>1</b>	
<b>PROJECT TOTALS</b>	<b>875.00</b>	<b>2</b>	<b>2</b>	<b>12</b>	<b>0</b>	<b>2</b>	

# DRAINAGE SCHEDULE

STRUCTURE NUMBER	STATION TO STATION	PIPE CULVERTS, CLASS A, TYPE 1 24"	PRECAST REINFORCED CONCRETE FLARED ENDSECTIONS 24"	PIPE CULVERTS, CLASS A, TYPE 1 18"	PRECAST REINFORCED CONCRETE FLARED ENDSECTIONS 18"	INLET AND PIPE PROTECTION
		FOOT	EACH	FOOT	EACH	EACH
<b>WHITE COUNTY</b>						
097-0045	5263+75.0 TO 526675	300	2			1
	<b>WHITE COUNTY TOTALS</b>	<b>300</b>	<b>2</b>	<b>0</b>	<b>0</b>	<b>1</b>
<b>JEFFERSON COUNTY</b>						
041-0064	3407+75.0 TO 3410+75.0	300	2.00			1
041-0065	3285+50.0 TO 3286+00.0			50	2	1
041-0066	2823+25.0 TO 2826+75.0			350	2	1
041-0079	2264+50 TO 2267+50			330	2	1
041-0062	2856+00.0 TO 2858+75			330	2	1
	<b>JEFFERSON COUNTY TOTALS</b>	<b>300</b>	<b>2</b>	<b>1060</b>	<b>8</b>	<b>5</b>
	<b>TOTALS</b>	<b>600</b>	<b>4</b>	<b>1060</b>	<b>8</b>	<b>6</b>



## PIER IMPROVEMENTS AT SN 097-0048

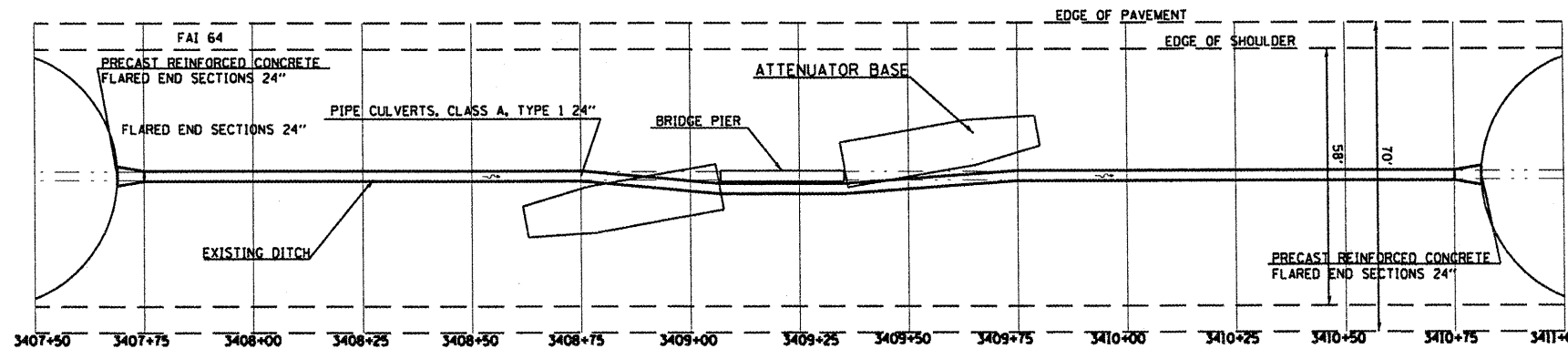


NOTE: THIS IMPROVEMENT IS IN A HYDRAULIC SUMMIT.

STATION	EXISTING FLOWLINE	PROPOSED FLOWLINE
5397+50	98.06	98.06
5397+75	98.06	98.06
5398+00	98.24	99.03
5398+25	98.17	99.10
5398+50	98.08	99.17
5398+75	97.91	99.20
5399+00	98.18	99.12
5399+25	98.25	99.04
5399+50	98.23	98.23
5399+75	98.04	98.04



## PIER IMPROVEMENTS AT SN 041-0064



NOTE: THIS IMPROVEMENT IS IN A HYDRAULIC RUN.

STATION	EXISTING FLOWLINE	PROPOSED FLOWLINE
3407+50	101.61	101.61
3407+75	101.47	101.47
3408+00	101.10	101.10
3408+25	100.93	100.93
3408+50	100.81	100.81
3408+75	100.56	100.56
3409+00	100.05	100.05
3409+25	99.82	99.82
3409+50	99.65	99.65
3409+75	99.28	99.28
3410+00	99.18	99.18
3410+25	98.96	98.96
3410+50	98.66	98.66
3410+75	98.50	98.50
3411+00	98.31	98.31

FILE NAME =  
 c:\pwork\p\1001\STOVERPG\d0182496\78

USER NAME = stoverpg  
 82-shr-plan.dgn  
 PLOT SCALE = 48.0000' / IN.  
 PLOT DATE = 3/15/2010

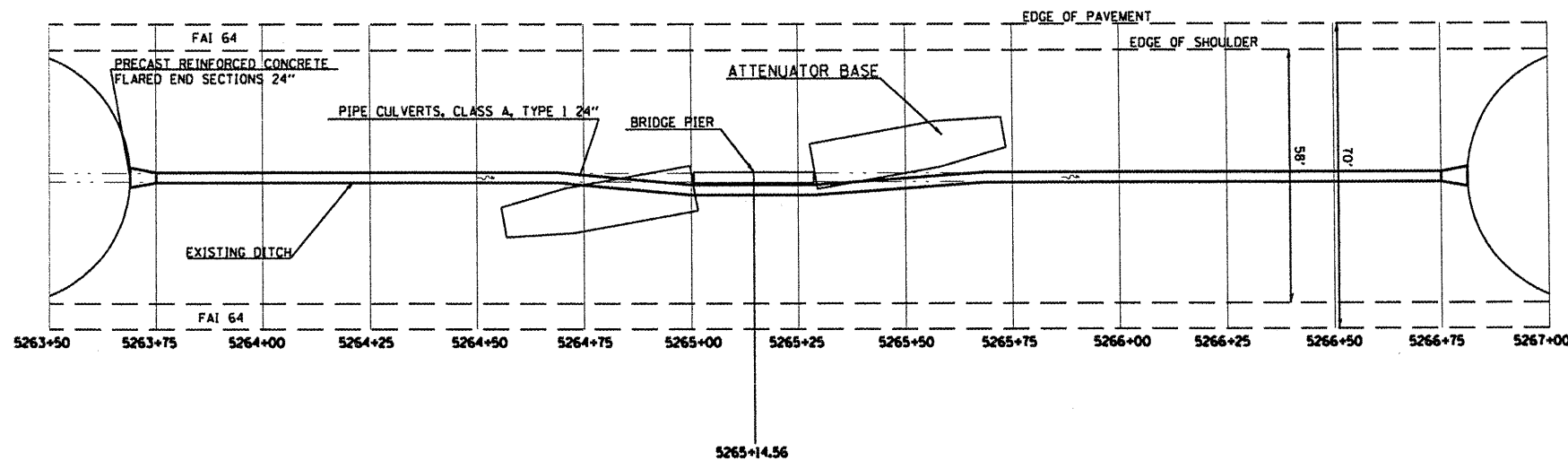
DESIGNED -	REVISD -
DRAWN -	REVISD -
CHECKED -	REVISD -
DATE -	REVISD -

**STATE OF ILLINOIS**  
**DEPARTMENT OF TRANSPORTATION**

SCALE: \_\_\_\_\_ SHEET NO. \_\_\_\_\_ OF \_\_\_\_\_ SHEETS STA. \_\_\_\_\_ TO STA. \_\_\_\_\_

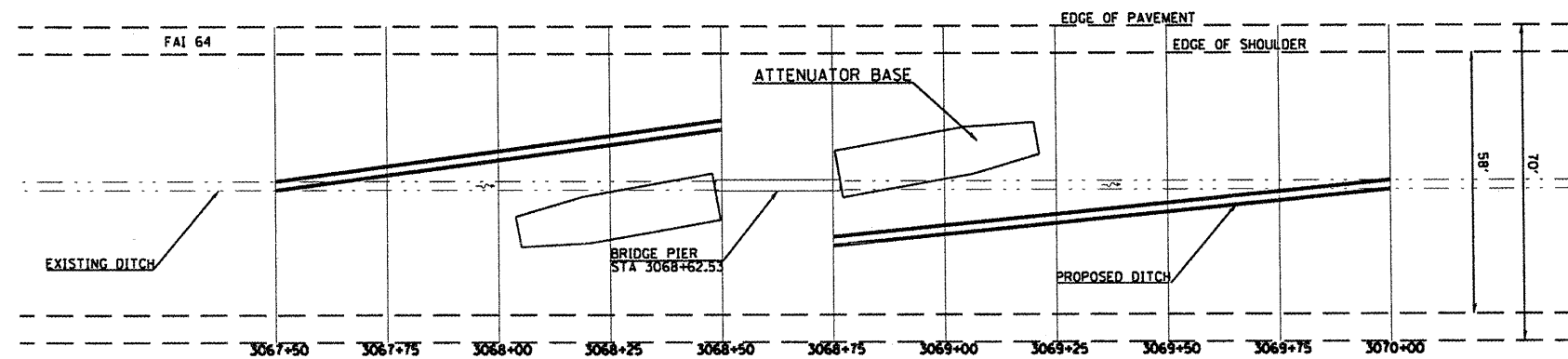
F.A.I. RTE.	SECTION	COUNTY	TOTAL SHEETS	SHEET NO.
64	09 SAFETY 2010-1	JEFFERSON & WHITE	26	7
CONTRACT NO. 78192				
ILLINOIS FED. AID PROJECT				

# PIER IMPROVEMENTS AT SN 097-0045



STATION	EXISTING FLOWLINE	PROPOSED FLOWLINE
5263+50	96.97	96.97
5263+75	97.09	97.09
5264+00	97.35	97.35
5264+25	97.68	97.68
5264+50	97.76	97.76
5264+75	97.83	97.83
5265+00	98.06	98.06
5265+25	98.09	98.09
5265+50	98.11	98.11
5265+75	98.33	98.33
5266+00	98.59	98.59
5266+25	98.62	98.62
5266+50	98.71	98.71
5266+75	98.67	98.67
5267+00	98.78	98.78

# PIER IMPROVEMENTS AT SN 041-0072

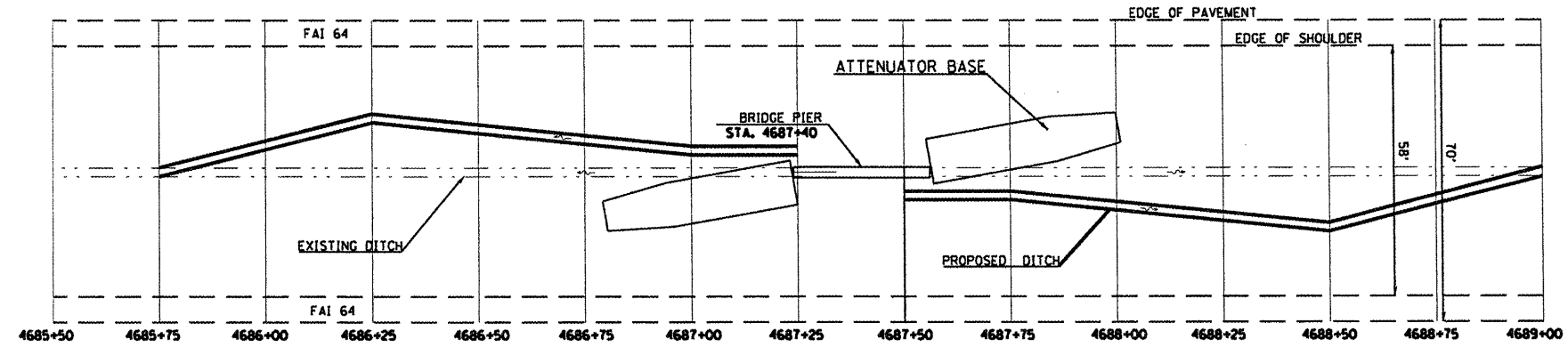


STATION	EXISTING FLOWLINE	PROPOSED FLOWLINE
3067+50	99.64	99.64
3067+75	100.21	99.89
3068+00	99.54	100.14
3068+25	99.15	100.39
3068+50	98.44	100.64
3068+75	98.26	100.44
3069+00	97.77	99.76
3069+25	97.33	99.09
3069+50	97.24	98.42
3069+75	97.12	97.74
3070+00	97.07	97.07





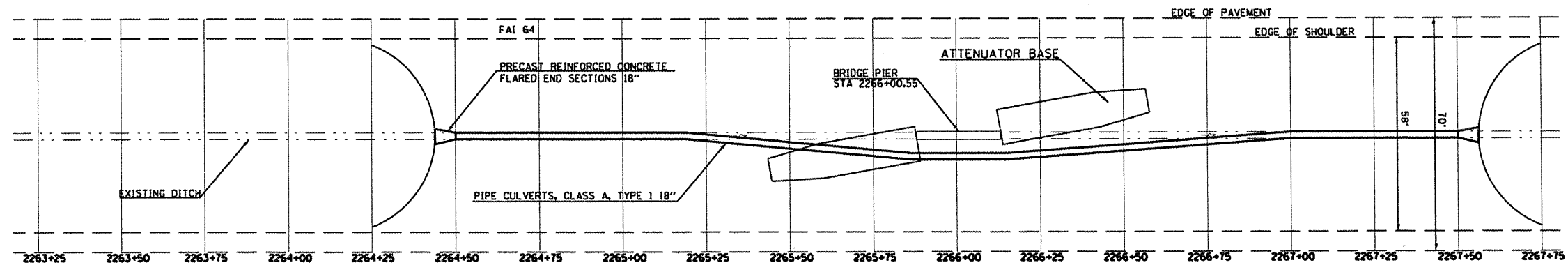
## PIER IMPROVEMENTS AT SN 097-0044



STATION	EXISTING FLOWLINE	PROPOSED FLOWLINE
4685+75	97.91	97.91
4686+00	98.24	98.27
4686+25	98.46	98.62
4686+50	98.42	98.98
4686+75	98.44	99.34
4687+00	98.53	99.69
4687+25	98.98	100.05
4687+50	99.07	100.05
4687+75	98.88	99.75
4688+00	98.61	99.45
4688+25	98.54	99.14
4688+50	98.32	98.84
4688+75	98.37	98.54
4689+00	98.24	98.24
4689+25	98.34	98.34
4689+50	98.21	98.21
4689+75	98.07	98.07



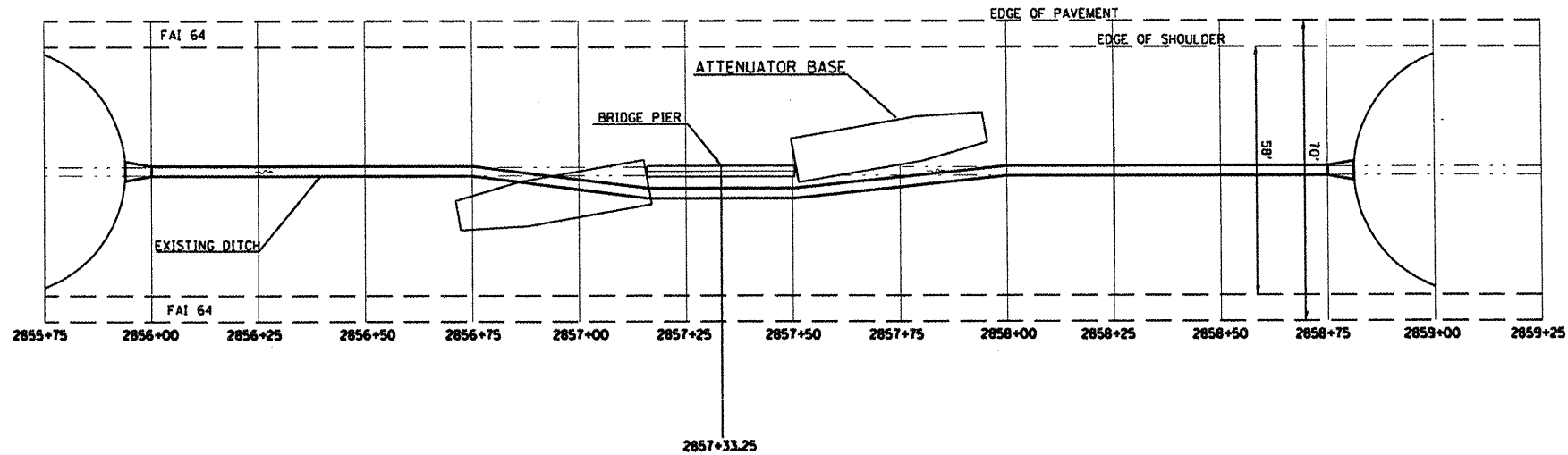
## PIER IMPROVEMENTS AT SN 041-0079



STATION	EXISTING FLOWLINE	PROPOSED FLOWLINE
2263+25	101.82	101.82
2263+50	100.67	100.67
2263+75	99.92	99.92
2264+00	99.62	99.62
2264+25	99.43	99.43
2264+50	99.12	99.12
2264+75	99.16	98.99
2265+00	99.01	98.87
2265+25	98.93	98.75
2265+50	98.77	98.62
2265+75	98.54	98.50
2266+00	98.11	98.38
2266+25	98.08	98.26
2266+50	98.07	98.13
2266+75	97.88	98.01
2267+00	97.71	97.89
2267+25	97.61	97.76
2267+50	97.64	97.64
2267+75	97.5	97.50



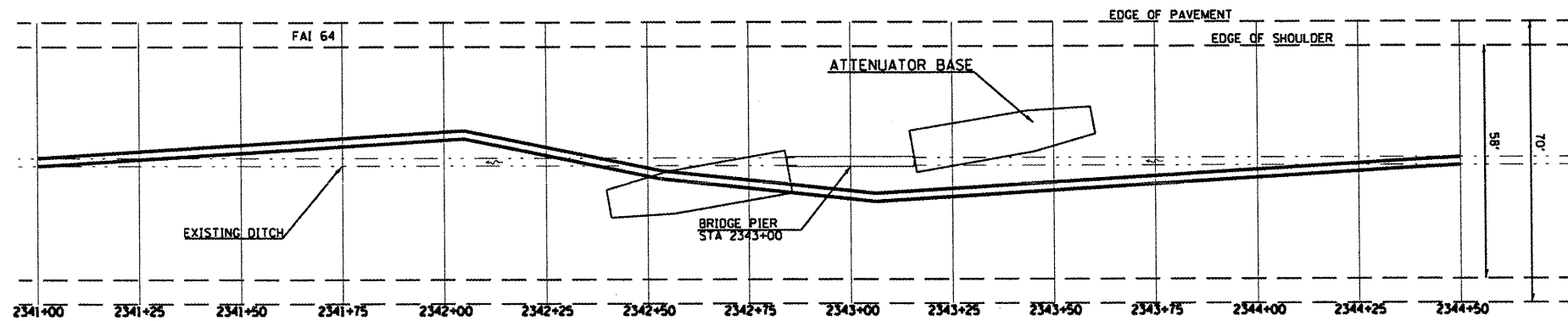
## PIER IMPROVEMENTS AT SN 041-0062



STATION	EXISTING FLOWLINE	PROPOSED FLOWLINE
2855+75	99.29	99.29
2856+00	98.97	98.97
2856+25	98.62	98.62
2856+50	98.68	98.68
2856+75	98.54	98.54
2857+00	98.21	98.21
2857+25	97.95	97.95
2857+50	97.51	97.51
2857+75	97.80	97.80
2858+00	97.79	97.79
2858+25	97.57	97.57
2858+50	97.54	97.54
2858+75	97.39	97.39
2859+00	97.31	97.31



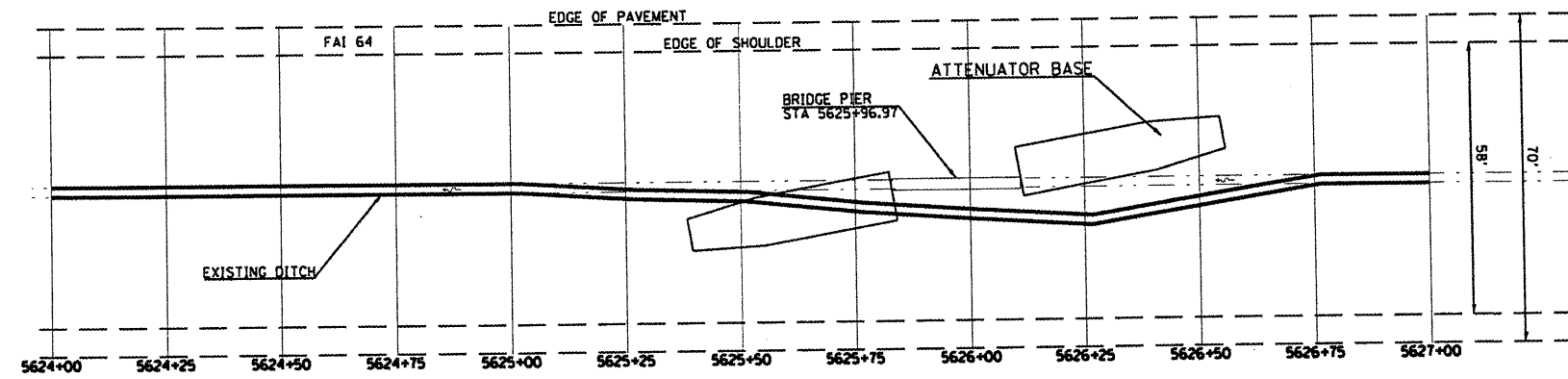
## PIER IMPROVEMENTS AT SN 041-0080



STATION	EXISTING FLOWLINE	PROPOSED FLOWLINE
2341+00	95.63	95.63
2341+25	95.98	96.22
2341+50	96.26	96.80
2341+75	96.57	97.39
2342+00	96.93	97.97
2342+25	97.27	98.56
2342+50	97.47	99.15
2342+75	98.04	99.73
2343+00	98.44	100.13
2343+25	98.57	100.53
2343+50	99.17	100.93
2343+75	99.57	101.33
2344+00	100.18	101.73
2344+25	100.53	102.12
2344+50	102.52	102.52



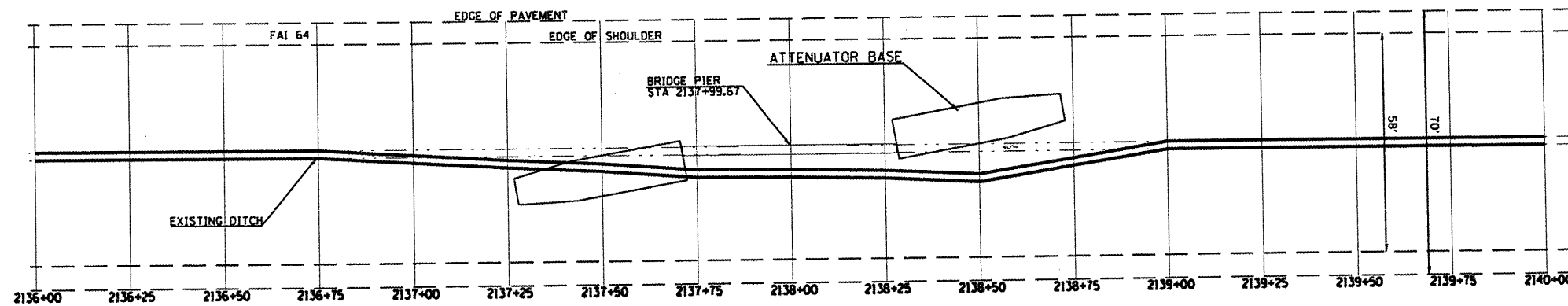
# PIER IMPROVEMENTS AT SN 097-0049



STATION	EXISTING FLOWLINE	PROPOSED FLOWLINE
5624+00	97.48	97.48
5624+25	97.73	97.89
5624+50	97.99	98.29
5624+75	98.13	98.70
5625+00	98.18	99.10
5625+25	98.47	99.51
5625+50	98.65	99.90
5625+75	98.85	100.23
5626+00	99.03	100.52
5626+25	99.43	100.77
5626+50	99.92	101.02
5626+75	100.80	101.27
5627+00	101.52	101.52



# PIER IMPROVEMENTS AT SN 041-0069



STATION	EXISTING FLOWLINE	PROPOSED FLOWLINE
2136+00	100.74	102.58
2136+25	100.72	102.46
2136+50	100.70	102.34
2136+75	100.92	102.22
2137+00	101.44	102.10
2137+25	101.04	101.98
2137+50	101.26	101.86
2137+75	101.21	101.74
2138+00	101.18	101.62
2138+25	100.73	101.50
2138+50	100.99	101.38
2138+75	101.10	101.26
2139+00	101.08	101.14
2139+25	101.25	101.02
2139+50	101.63	100.90
2139+75	102.07	100.78
2140+00	102.58	100.74

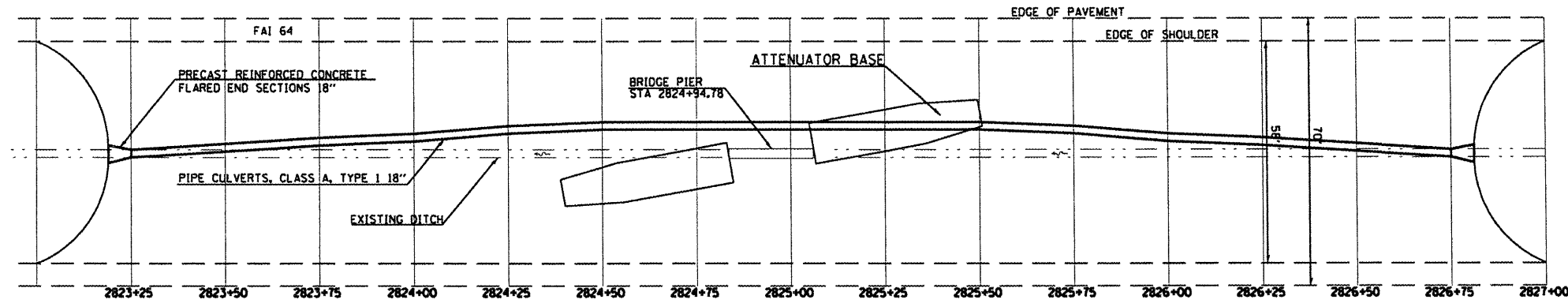
FILE NAME =	USER NAME = stoverpg	DESIGNED -	REVISED -
c:\pwork\p\WIDOT\STOVERPG\d8182496\78	22-shr-plen.dgn	DRAWN -	REVISED -
	PLOT SCALE = 40.0000' / IN.	CHECKED -	REVISED -
	PLOT DATE = 3/15/2010	DATE -	REVISED -

**STATE OF ILLINOIS  
DEPARTMENT OF TRANSPORTATION**

SCALE: \_\_\_\_\_ SHEET NO. \_\_\_\_ OF \_\_\_\_ SHEETS STA. \_\_\_\_\_ TO STA. \_\_\_\_\_

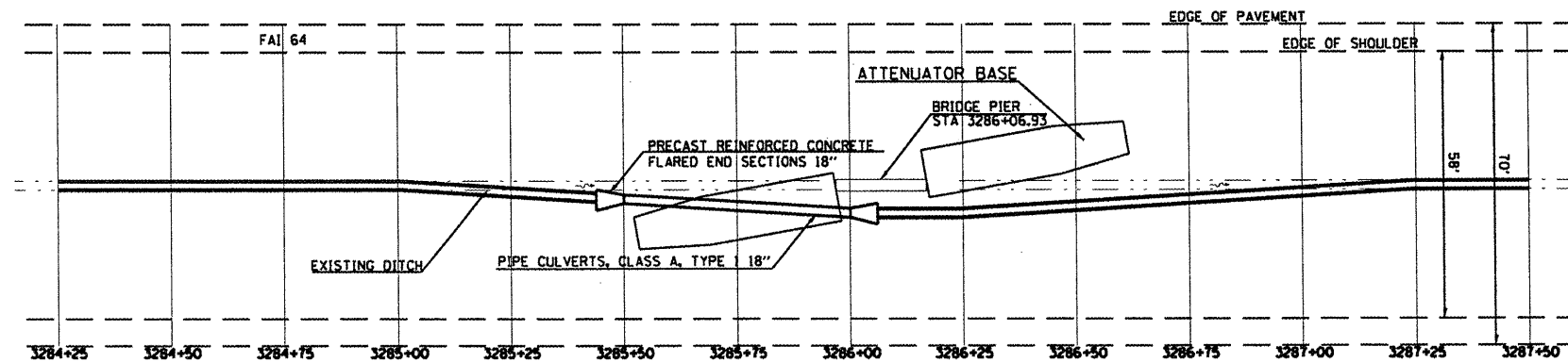
F.A.I. RTE.	SECTION	COUNTY	TOTAL SHEETS	SHEET NO.
64	09 SAFETY 2010-1	JEFFERSON & WHITE	26	11
CONTRACT NO. 78192				
ILLINOIS FED. AID PROJECT				

# PIER IMPROVEMENTS AT SN 041-0066



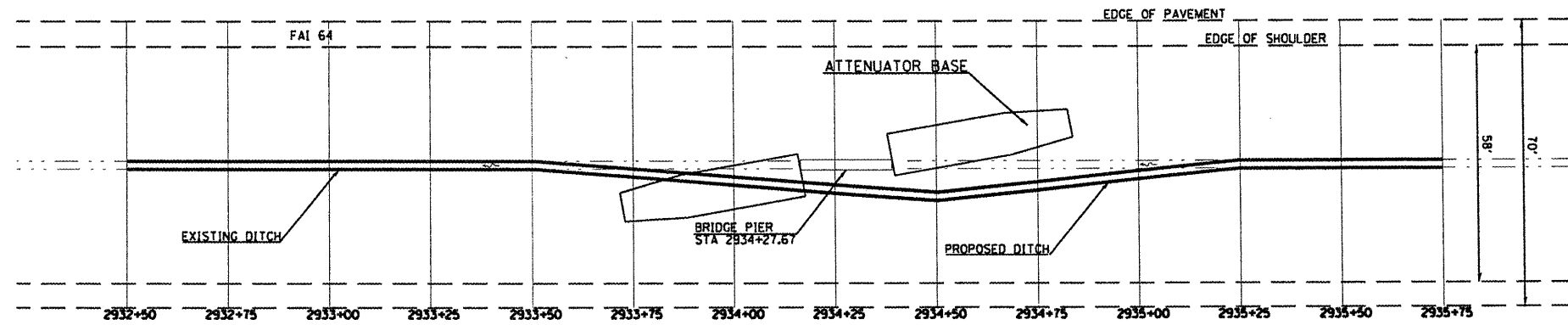
STATION	EXISTING FLOWLINE	PROPOSED FLOWLINE
2823+25	94.53	94.53
2823+50	94.85	94.72
2823+75	94.61	94.92
2824+00	94.81	95.12
2824+25	94.97	95.32
2824+50	95.08	95.52
2824+75	95.31	95.72
2825+00	95.45	95.92
2825+25	95.60	96.12
2825+50	95.78	96.32
2825+75	96.08	96.52
2826+00	96.32	96.72
2826+25	96.71	96.92
2826+50	96.87	97.12
2826+75	97.14	97.32

# PIER IMPROVEMENTS AT SN 041-0065

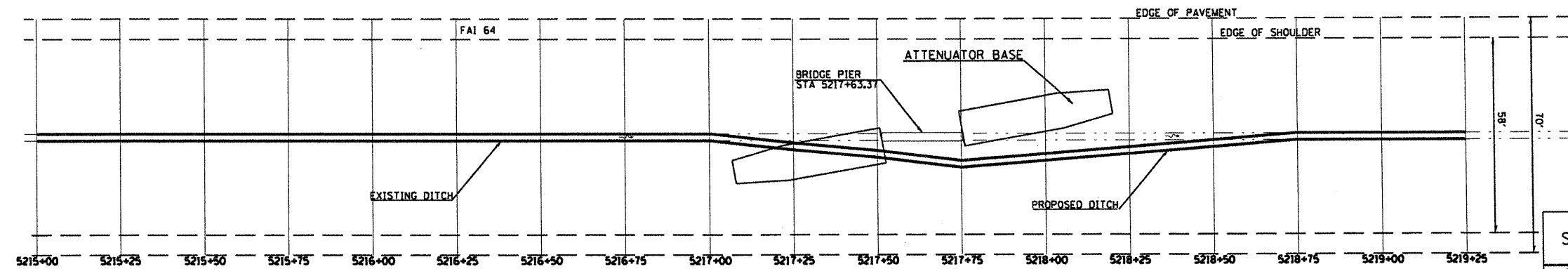


STATION	EXISTING FLOWLINE	PROPOSED FLOWLINE
3284+25	98.34	98.34
3284+50	97.40	98.17
3284+75	97.49	97.99
3285+00	97.39	97.82
3285+25	97.44	97.64
3285+50	97.27	97.47
3285+75	97.05	97.30
3286+00	96.59	97.12
3286+25	96.73	96.95
3286+50	96.34	96.78
3286+75	96.30	96.60
3287+00	96.62	96.43
3287+25	95.96	96.25
3287+50	96.08	96.08

# PIER IMPROVEMENTS AT SN 041-0063



STATION	EXISTING FLOWLINE	PROPOSED FLOWLINE
2932+50	95.72	95.72
2932+75	95.93	95.86
2933+00	95.93	96.00
2933+25	96.14	96.14
2933+50	96.21	96.27
2933+75	96.23	96.41
2934+00	96.30	96.55
2934+25	96.33	96.69
2934+50	96.08	96.83
2934+75	96.24	96.97
2935+00	96.32	97.11
2935+25	96.45	97.25
2935+50	96.69	97.39
2935+75	97.52	97.52



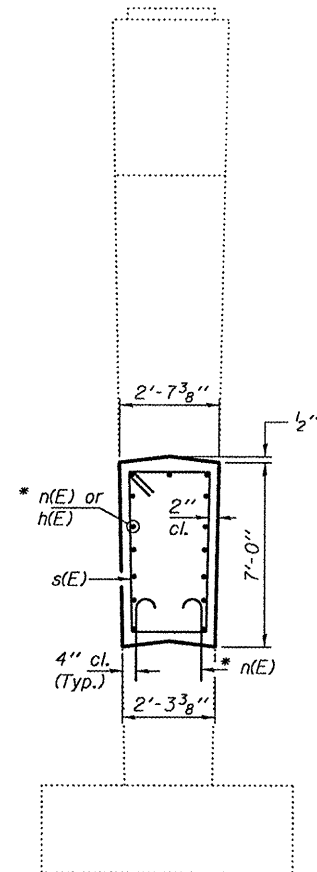
STATION	EXISTING FLOWLINE	PROPOSED FLOWLINE
5215+00	101.79	101.79
5215+25	100.85	101.60
5215+50	100.23	101.41
5215+75	99.76	101.22
5216+00	99.51	101.03
5216+25	99.19	100.84
5216+50	99.04	100.65
5216+75	98.90	100.46
5217+00	98.89	100.27
5217+25	98.85	100.08
5217+50	98.68	99.88
5217+75	98.64	99.69
5218+00	98.74	99.50
5218+25	98.73	99.31
5218+50	98.6	99.12
5218+75	98.52	98.93
5219+00	98.36	98.74
5219+25	98.44	98.55
5219+50	98.22	98.36
5219+75	98.17	98.17

# PIER IMPROVEMENTS AT SN 097-0050



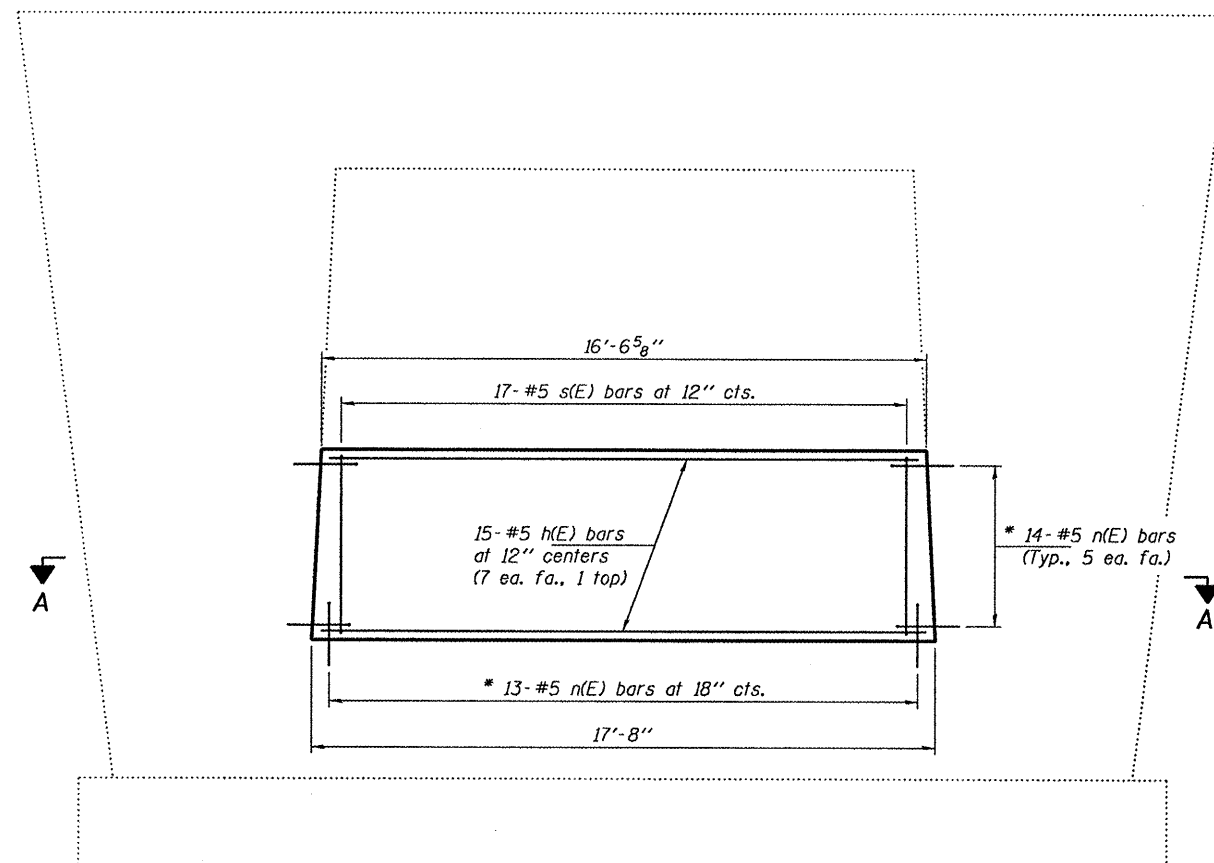
STATE OF ILLINOIS  
DEPARTMENT OF TRANSPORTATION

→ B

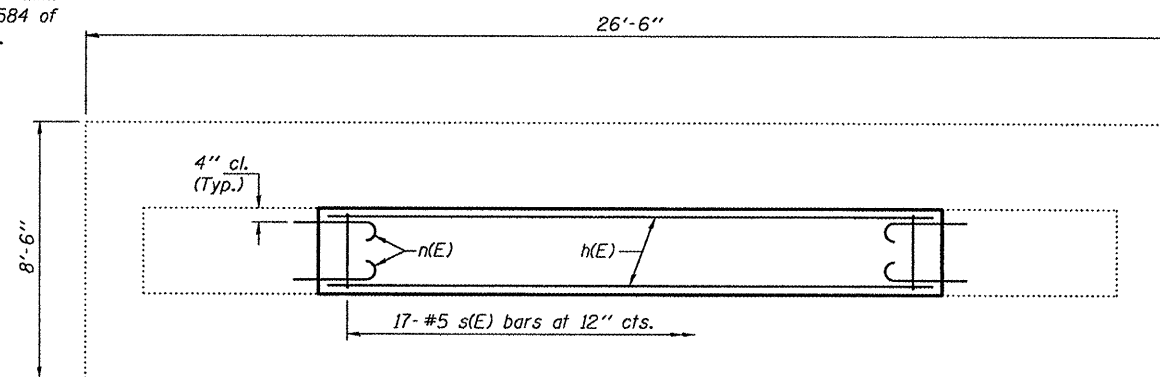


SECTION B-B

\* Epoxy grout n(E) bars in 9" min. holes according to Article 584 of the Standard Specifications.



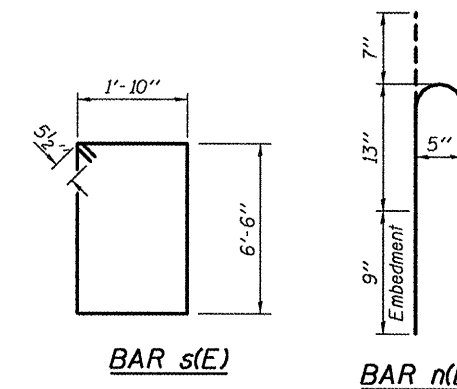
→ B ELEVATION



SECTION A-A

NOTES

The cost of epoxy grouting threaded rods shall be included with Reinforcement Bars, Epoxy Coated.  
Plan dimensions and details relative to existing plans are subject to nominal construction variations. The Contractor shall field verify existing dimensions and details affecting new construction and make necessary approved adjustments prior to construction or ordering of materials. Such variations shall not be cause for additional compensation for a change in scope of the work, however, the Contractor will be paid for the quantity actually furnished at the unit price bid for the work.  
Reinforcement bars shall conform to the requirements of ASTM A 706 Gr 60. See Special Provisions.  
Reinforcement bars designated (E) shall be epoxy coated.



BAR s(E)

BAR n(E)

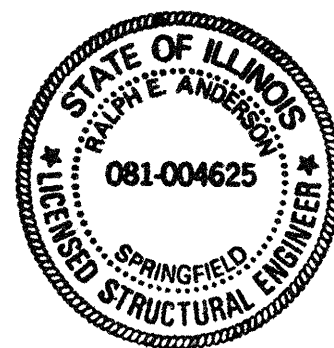
BILL OF MATERIAL

Bar	No.	Size	Length	Shape
h(E)	15	#5	17'-2"	—
n(E)	54	#5	2'-8"	⌒
s(E)	17	#5	17'-7"	□
Concrete Structures			Cu. Yd.	10.8
Reinforcement Bars, Epoxy Coated			Pound	730

PIER IMPROVEMENT DETAILS  
SN 041-0064

DESIGNED: *[Signature]*  
CHECKED: *[Signature]*  
DRAWN: Kyle M. Steffen  
CHECKED: *[Signature]*

MAY 10, 2010  
EXAMINED: *[Signature]*  
PASSED: *[Signature]*  
ENGINEER OF STRUCTURAL SERVICES  
ENGINEER OF BRIDGES AND STRUCTURES



Expires: November 30, 2010

SHEET NO. 1 1 SHEETS	F.A.I. RTE.	SECTION	COUNTY	TOTAL SHEETS	SHEET NO.
	64	D9 SAFETY 2010-1	JEFFERSON	26	14
FED. ROAD DIST. NO.			ILLINOIS FED. AID PROJECT		
CONTRACT NO. 78192					

STATE OF ILLINOIS  
DEPARTMENT OF TRANSPORTATION

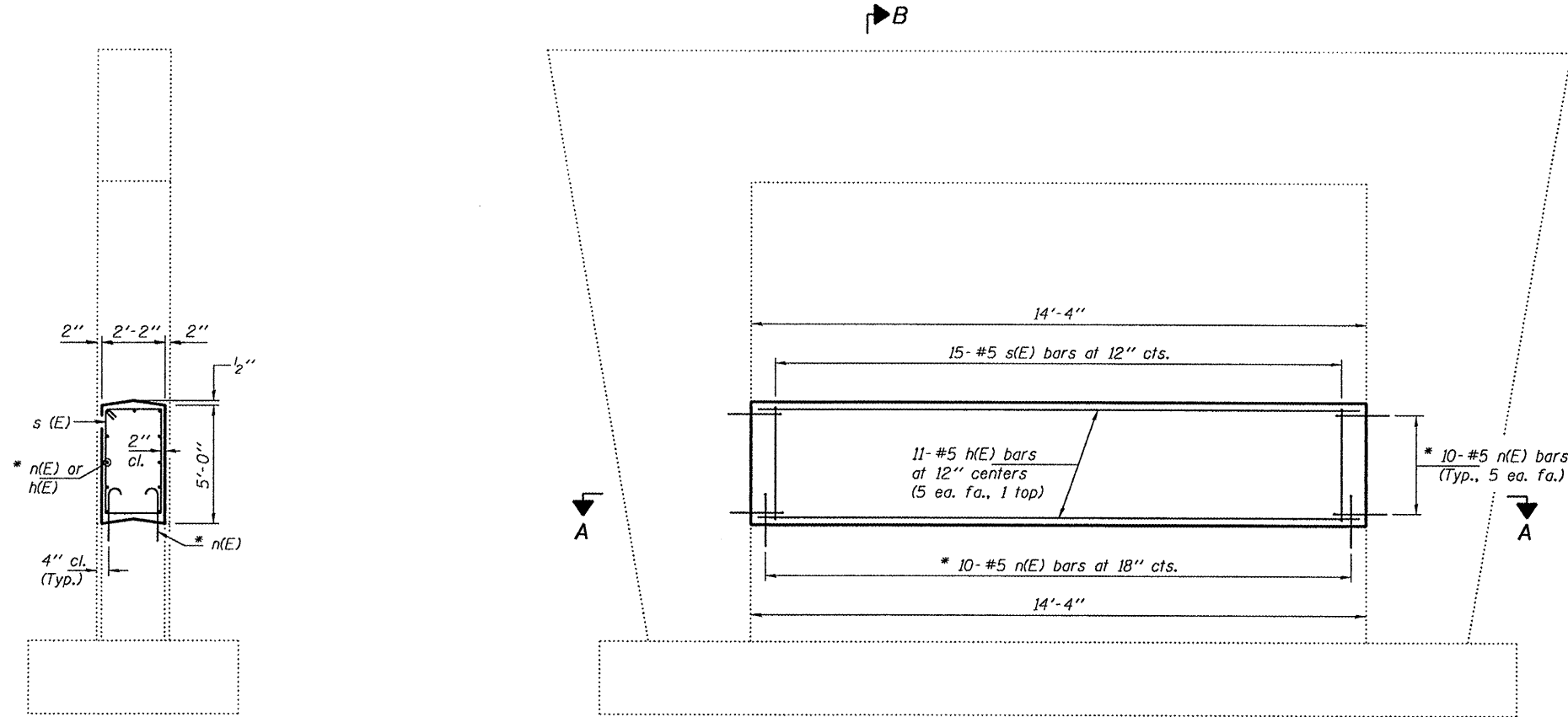
**NOTES**

The cost of epoxy grouting threaded rods shall be included with Reinforcement Bars, Epoxy Coated.

Plan dimensions and details relative to existing plans are subject to nominal construction variations. The Contractor shall field verify existing dimensions and details affecting new construction and make necessary approved adjustments prior to construction or ordering of materials. Such variations shall not be cause for additional compensation for a change in scope of the work, however, the Contractor will be paid for the quantity actually furnished at the unit price bid for the work.

Reinforcement bars shall conform to the requirements of ASTM A 706 Gr 60. See Special Provisions.

Reinforcement bars designated (E) shall be epoxy coated.

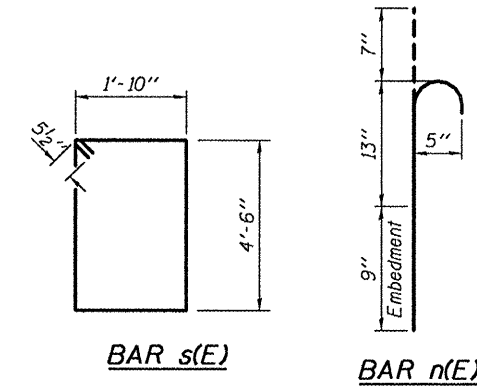


**SECTION B-B**

\* Epoxy grout n(E) bars in 9" min. holes according to Article 584 of the Standard Specifications.

**ELEVATION**

**SECTION A-A**



**BAR s(E)**

**BAR n(E)**

**BILL OF MATERIAL**

Bar	No.	Size	Length	Shape
h(E)	11	#5	14'-0"	—
n(E)	40	#5	2'-8"	⊔
s(E)	15	#5	13'-7"	□
Concrete Structures			Cu. Yd.	5.7
Reinforcement Bars, Epoxy Coated			Pound	480

**PIER IMPROVEMENT DETAILS  
SN 097-0045**

DESIGNED	<i>[Signature]</i>
CHECKED	<i>[Signature]</i>
DRAWN	Kyle M. Steffen
CHECKED	ISL <i>[Signature]</i>

EXAMINED	MAY 10, 2010	<i>[Signature]</i>
PASSED		<i>[Signature]</i>



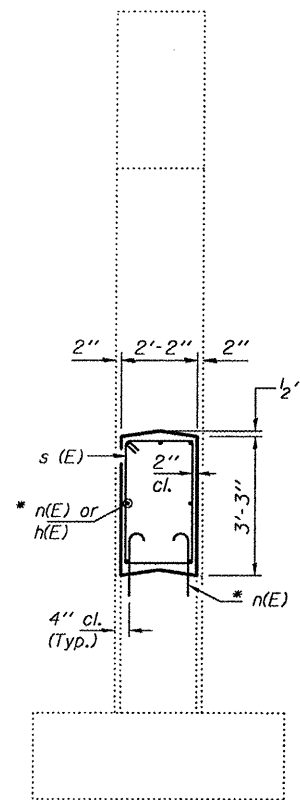
Expires: November 30, 2010

SHEET NO. 1 1 SHEETS	F.A.I. RTE.	SECTION	COUNTY	TOTAL SHEETS	SHEET NO.
	64	D9 SAFETY 2010-1	WHITE	26	15
			CONTRACT NO. 78192		
FED. ROAD DIST. NO.		ILLINOIS	FED. AID PROJECT		

STATE OF ILLINOIS  
DEPARTMENT OF TRANSPORTATION

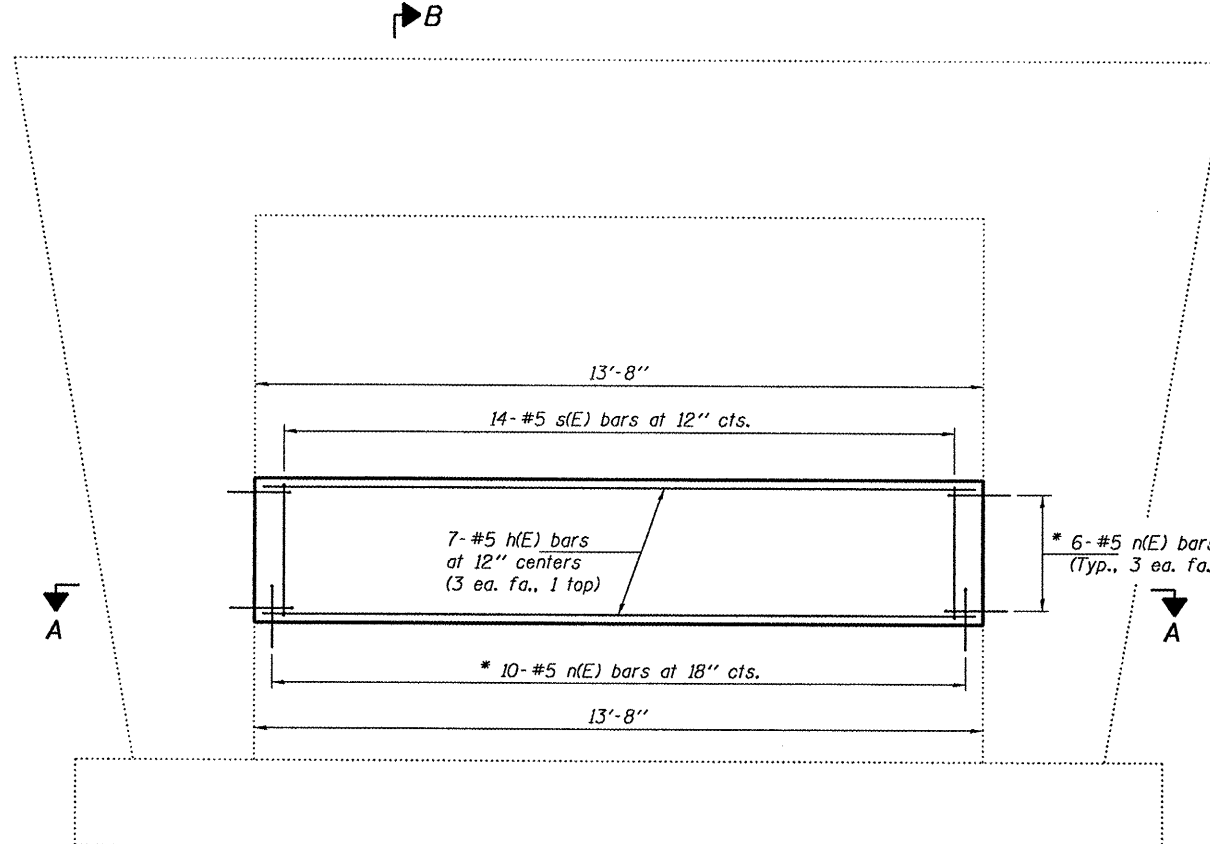
**NOTES**

The cost of epoxy grouting threaded rods shall be included with Reinforcement Bars, Epoxy Coated.  
 Plan dimensions and details relative to existing plans are subject to nominal construction variations. The Contractor shall field verify existing dimensions and details affecting new construction and make necessary approved adjustments prior to construction or ordering of materials. Such variations shall not be cause for additional compensation for a change in scope of the work, however, the Contractor will be paid for the quantity actually furnished at the unit price bid for the work.  
 Reinforcement bars shall conform to the requirements of ASTM A 706 Gr 60. See Special Provisions.  
 Reinforcement bars designated (E) shall be epoxy coated.

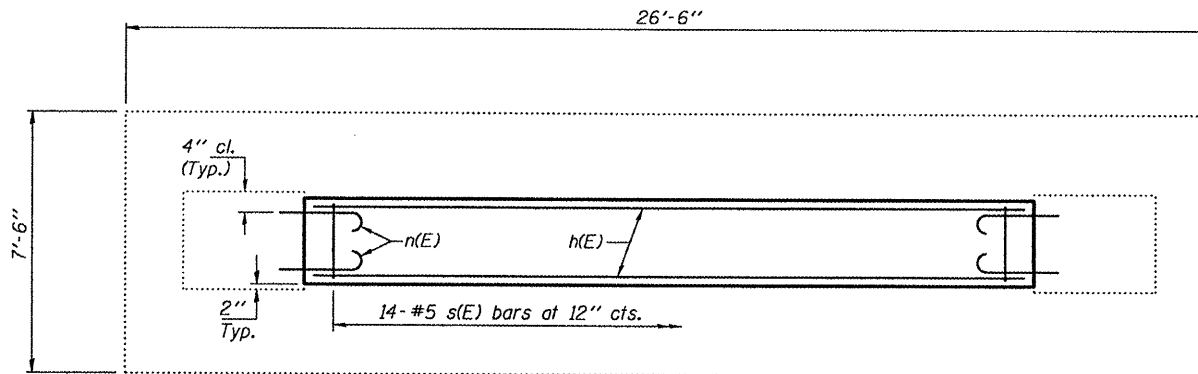


**SECTION B-B**

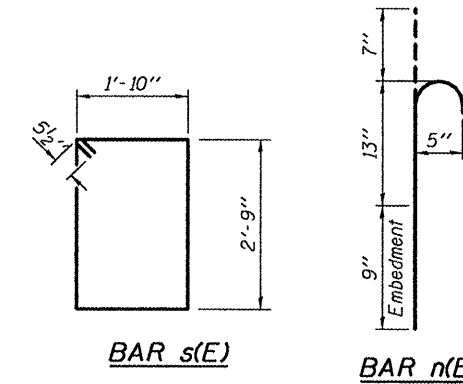
\* Epoxy grout n(E) bars in 9" min. holes according to Article 584 of the Standard Specifications.



**ELEVATION**



**SECTION A-A**



**BAR s(E)**

**BAR n(E)**

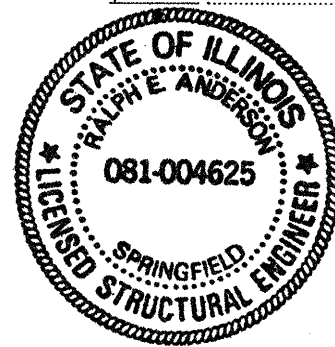
**BILL OF MATERIAL**

Bar	No.	Size	Length	Shape	
n(E)	7	#5	13'-2"	—	
n(E)	32	#5	2'-8"	⌒	
s(E)	14	#5	10'-1"	□	
Concrete Structures				Cu. Yd.	3.6
Reinforcement Bars, Epoxy Coated				Pound	330

**PIER IMPROVEMENT DETAILS  
SN 097-0048**

DESIGNED	<i>Jan D. J...</i>
CHECKED	<i>...</i>
DRAWN	Kyle M. Steffen
CHECKED	<i>ISL</i>

EXAMINED	MAY 10, 2010	<i>Ralph E. Anderson</i>
PASSED		<i>Ralph E. Anderson</i>



Expires: November 30, 2010

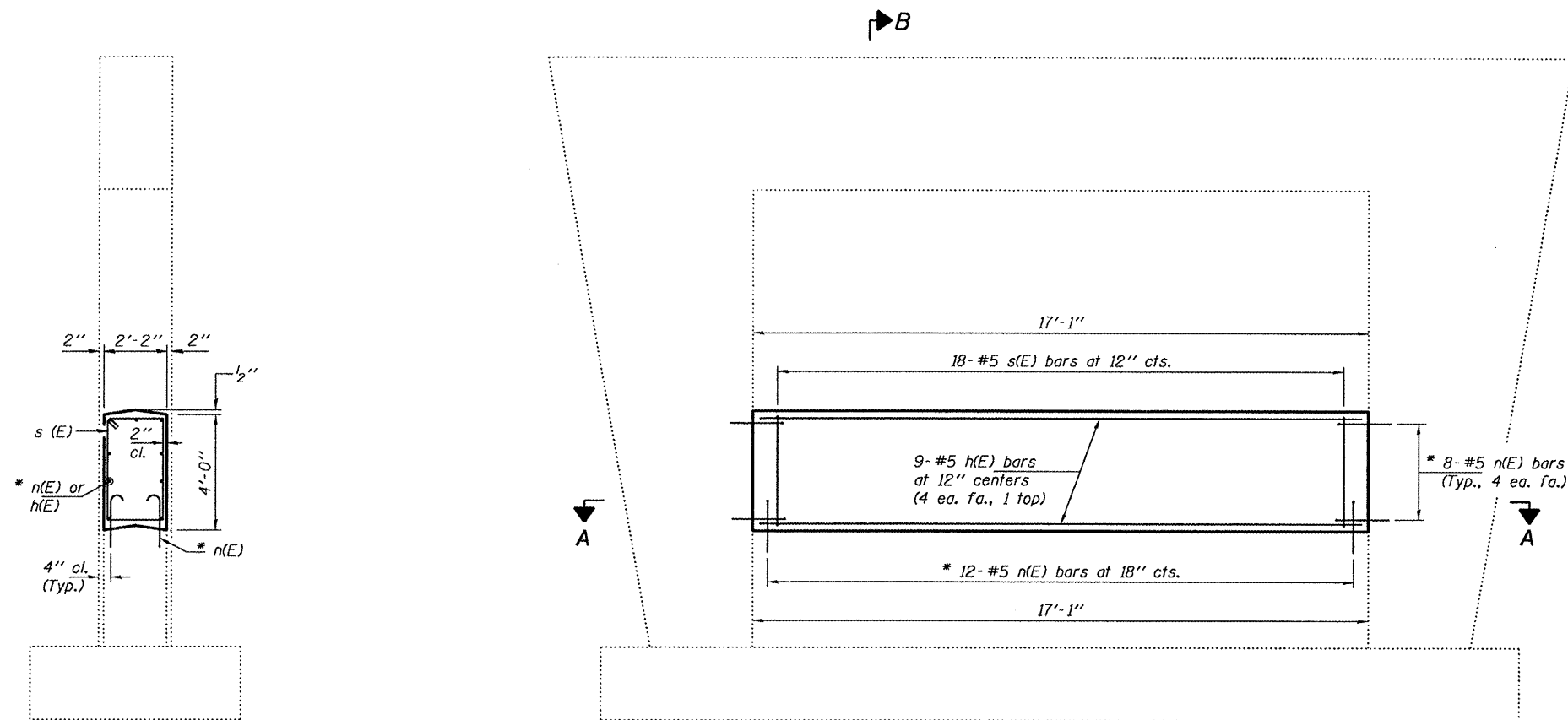
SHEET NO. 1 1 SHEETS	F.A.I. RTE.	SECTION	COUNTY	TOTAL SHEETS	SHEET NO.
	64	D9 SAFETY 2010-1	WHITE	26	16
			CONTRACT NO. 78192		
FED. ROAD DIST. NO.		ILLINOIS	FED. AID PROJECT		



STATE OF ILLINOIS  
DEPARTMENT OF TRANSPORTATION

**NOTES**

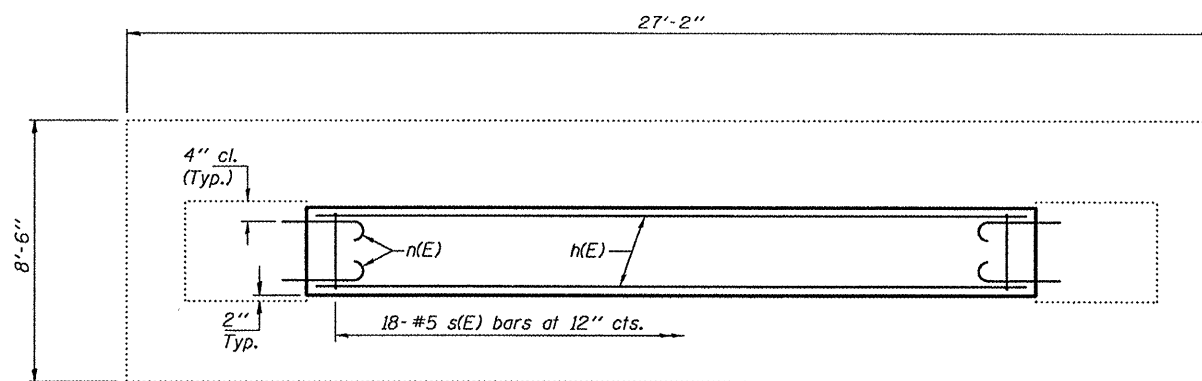
The cost of epoxy grouting threaded rods shall be included with Reinforcement Bars, Epoxy Coated.  
Plan dimensions and details relative to existing plans are subject to nominal construction variations. The Contractor shall field verify existing dimensions and details affecting new construction and make necessary approved adjustments prior to construction or ordering of materials. Such variations shall not be cause for additional compensation for a change in scope of the work, however, the Contractor will be paid for the quantity actually furnished at the unit price bid for the work.  
Reinforcement bars shall conform to the requirements of ASTM A 706 Gr 60. See Special Provisions.  
Reinforcement bars designated (E) shall be epoxy coated.



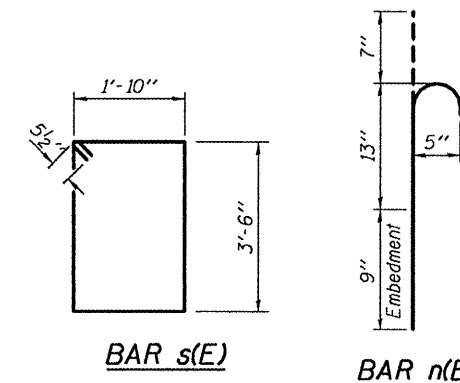
**SECTION B-B**

\* Epoxy grout n(E) bars in 9" min. holes according to Article 584 of the Standard Specifications.

**ELEVATION**



**SECTION A-A**



**BILL OF MATERIAL**

Bar	No.	Size	Length	Shape
h(E)	9	#5	16'-7"	—
n(E)	40	#5	2'-8"	⌒
s(E)	18	#5	11'-7"	□
Concrete Structures			Cu. Yd.	5.5
Reinforcement Bars, Epoxy Coated			Pound	480

**PIER IMPROVEMENT DETAILS  
SN 097-0044**

DESIGNED *[Signature]*  
CHECKED *[Signature]*  
DRAWN Kyle M. Steffen  
CHECKED *[Signature]*

MAY 10, 2010  
EXAMINED *[Signature]*  
PASSED *[Signature]*  
ENGINEER OF BRIDGES AND STRUCTURES



Expires: November 30, 2010

SHEET NO. 1 1 SHEETS	F.A.I. RTE. 64	SECTION D9 SAFETY 2010-1	COUNTY WHITE	TOTAL SHEETS 26	SHEET NO. 17
	CONTRACT NO. 78192				
FED. ROAD DIST. NO.		ILLINOIS FED. AID PROJECT			

STATE OF ILLINOIS  
DEPARTMENT OF TRANSPORTATION

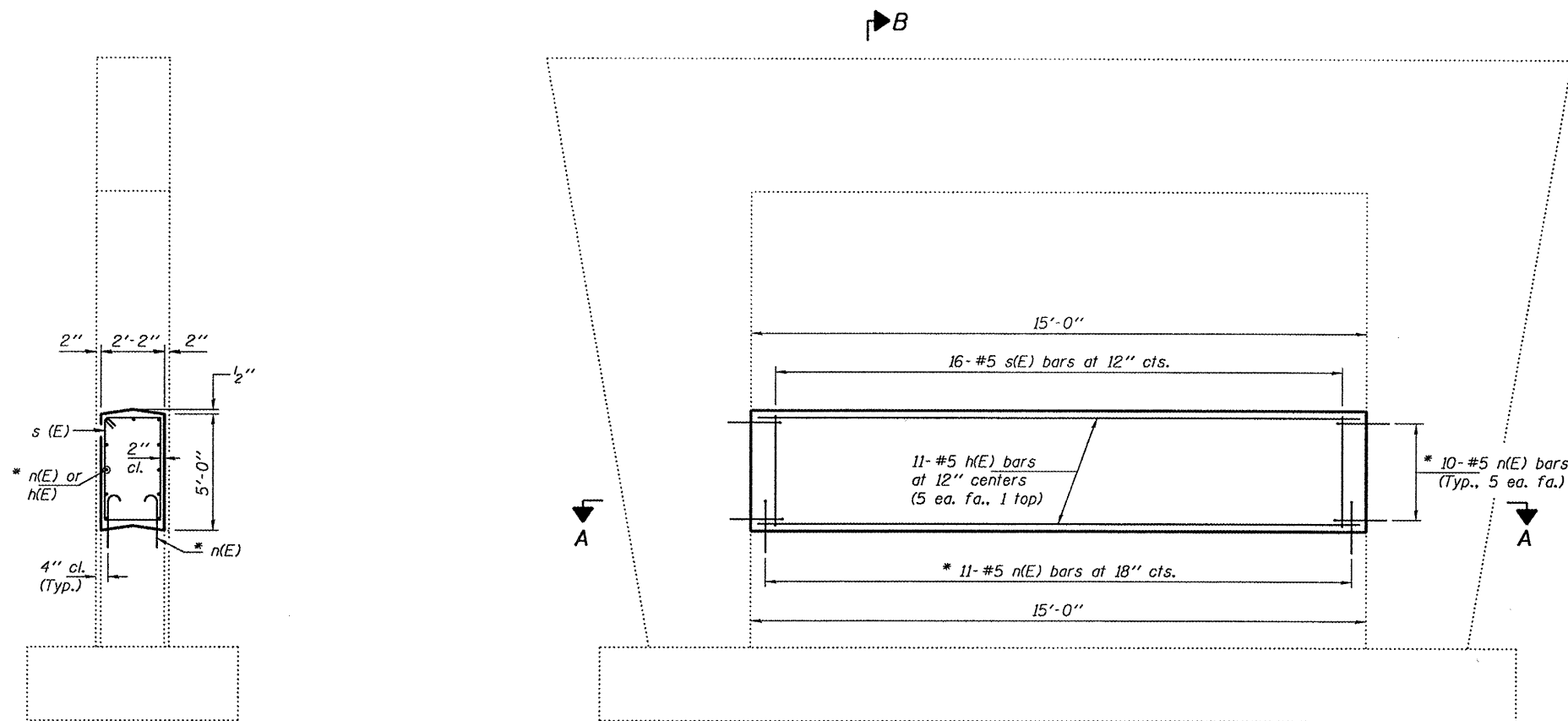
**NOTES**

The cost of epoxy grouting threaded rods shall be included with Reinforcement Bars, Epoxy Coated.

Plan dimensions and details relative to existing plans are subject to nominal construction variations. The Contractor shall field verify existing dimensions and details affecting new construction and make necessary approved adjustments prior to construction or ordering of materials. Such variations shall not be cause for additional compensation for a change in scope of the work, however, the Contractor will be paid for the quantity actually furnished at the unit price bid for the work.

Reinforcement bars shall conform to the requirements of ASTM A 706 Gr 60. See Special Provisions.

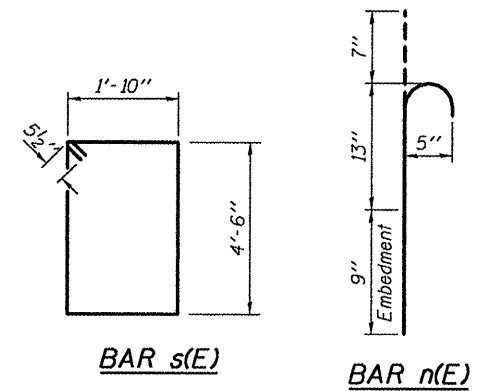
Reinforcement bars designated (E) shall be epoxy coated.



**SECTION B-B**

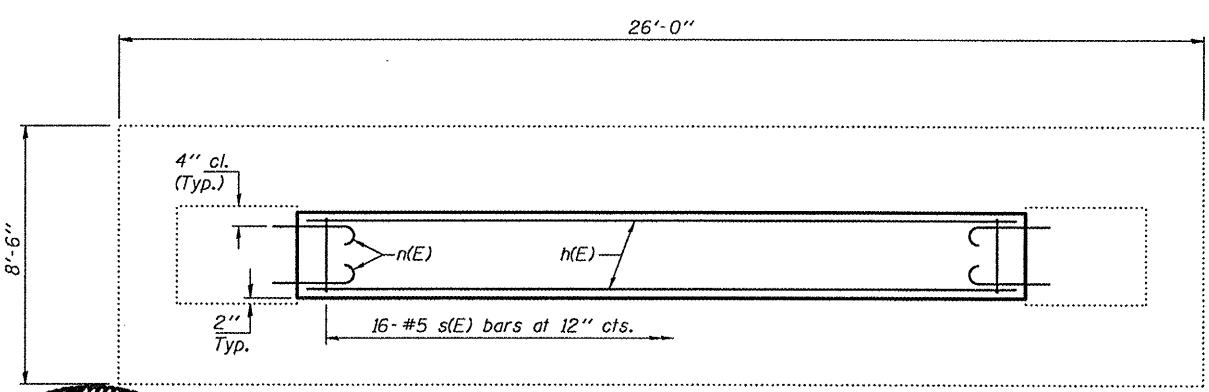
**ELEVATION**

\* Epoxy grout n(E) bars in 9" min. holes according to Article 584 of the Standard Specifications.



**BAR s(E)**

**BAR n(E)**

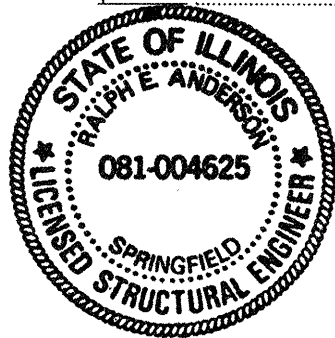


**SECTION A-A**

**BILL OF MATERIAL**

Bar	No.	Size	Length	Shape
h(E)	11	#5	14'-6"	—
n(E)	42	#5	2'-8"	—
s(E)	16	#5	13'-7"	□
Concrete Structures			Cu. Yd.	6.0
Reinforcement Bars, Epoxy Coated			Pound	500

**PIER IMPROVEMENT DETAILS  
SN 041-0072**



Expires: November 30, 2010

DESIGNED *[Signature]*  
CHECKED *[Signature]*  
DRAWN Kyle M. Steffen  
CHECKED *[Signature]*

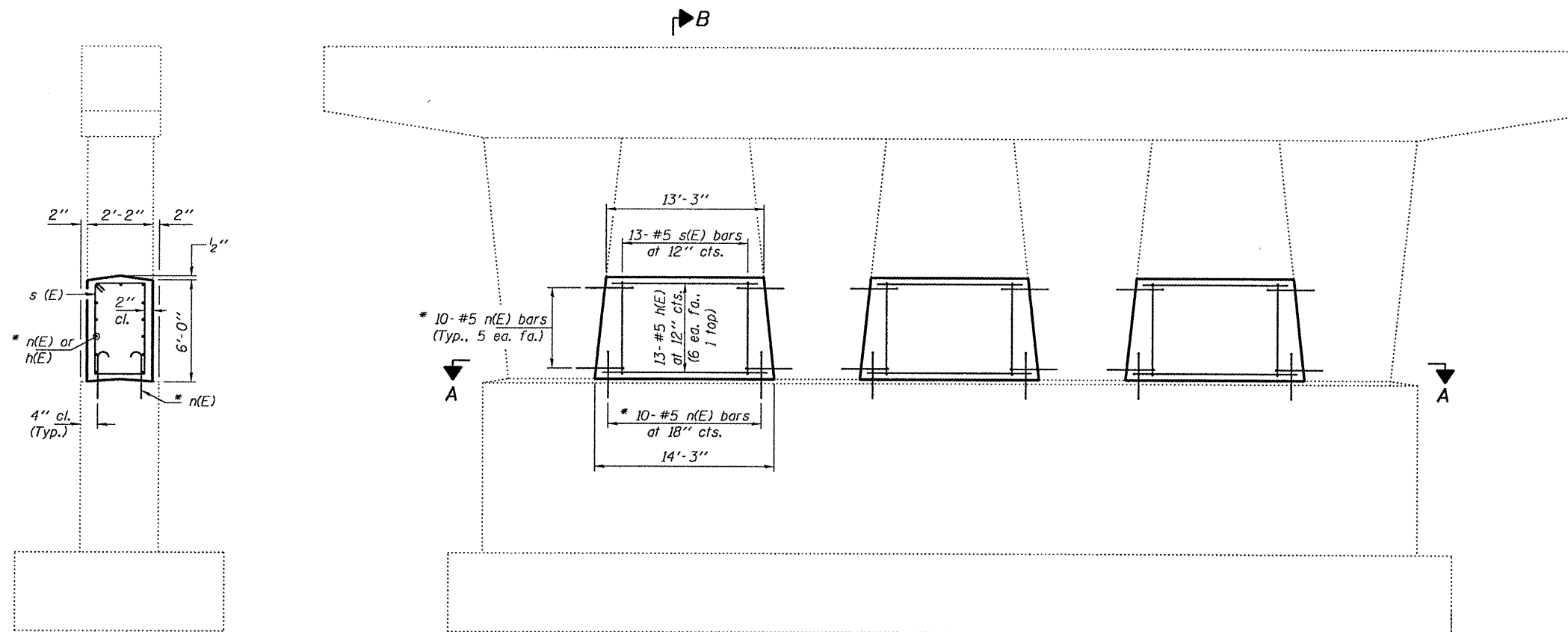
MAY 10, 2010  
EXAMINED *[Signature]*  
PASSED *[Signature]*  
ENGINEER OF BRIDGES AND STRUCTURES

SHEET NO. 1 1 SHEETS	F.A.I. RTE.	SECTION	COUNTY	TOTAL SHEETS	SHEET NO.
	64	D9 SAFETY 2010-1	JEFFERSON	26	18
			CONTRACT NO. 78192		
FED. ROAD DIST. NO.		ILLINOIS	FED. AID PROJECT		

STATE OF ILLINOIS  
DEPARTMENT OF TRANSPORTATION

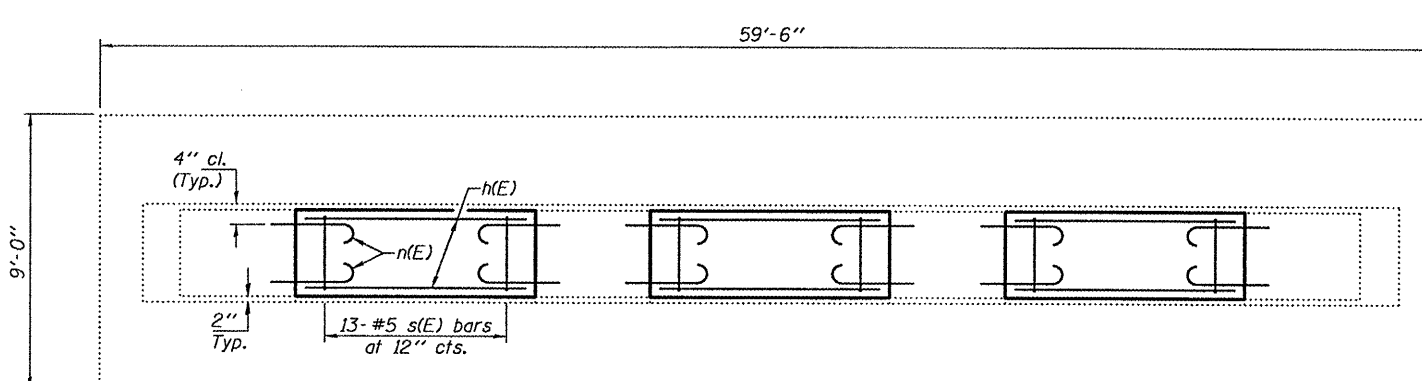
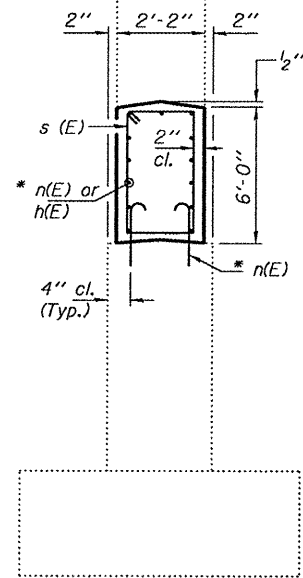
**NOTES**

The cost of epoxy grouting threaded rods shall be included with Reinforcement Bars, Epoxy Coated.  
Plan dimensions and details relative to existing plans are subject to nominal construction variations. The Contractor shall field verify existing dimensions and details affecting new construction and make necessary approved adjustments prior to construction or ordering of materials. Such variations shall not be cause for additional compensation for a change in scope of the work, however, the Contractor will be paid for the quantity actually furnished at the unit price bid for the work.  
Reinforcement bars shall conform to the requirements of ASTM A 706 Gr 60. See Special Provisions.  
Reinforcement bars designated (E) shall be epoxy coated.

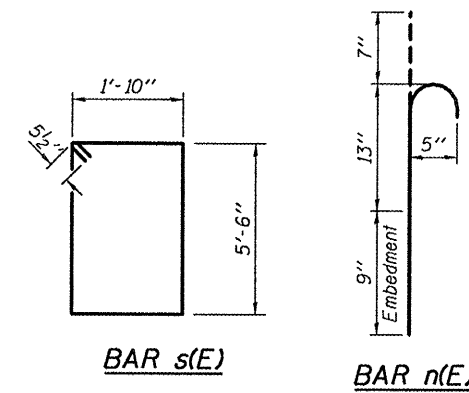


**ELEVATION**  
Reinforcement details  
typical at all locations.

**SECTION B-B**



**SECTION A-A**  
Reinforcement details  
typical at all locations.



**BILL OF MATERIAL**

Bar	No.	Size	Length	Shape
h(E)	39	#5	13'-9"	—
n(E)	120	#5	2'-8"	—
s(E)	39	#5	15'-7"	□
Concrete Structures			Cu. Yd.	19.9
Reinforcement Bars, Epoxy Coated			Pound	1520

**PIER IMPROVEMENT DETAILS**  
SN 041-0069



Expires: November 30, 2010

DESIGNED: [Signature]  
CHECKED: [Signature]  
DRAWN: Kyle M. Steffen  
CHECKED: [Signature]

MAY 10, 2010  
EXAMINED: [Signature]  
PASSED: [Signature]  
ENGINEER OF STRUCTURAL SERVICES  
ENGINEER OF BRIDGES AND STRUCTURES

SHEET NO. 1 1 SHEETS	F.A.I. RTE.	SECTION	COUNTY	TOTAL SHEETS	SHEET NO.
	64	D9 SAFETY 2010-1	JEFFERSON	26	19
			CONTRACT NO. 78192		
FED. ROAD DIST. NO.		ILLINOIS	FED. AID PROJECT		

STATE OF ILLINOIS  
DEPARTMENT OF TRANSPORTATION

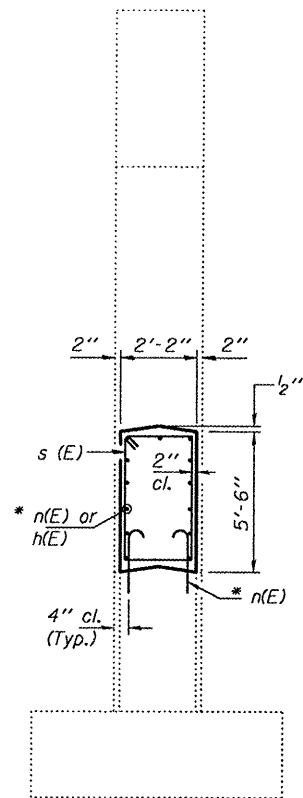
**NOTES**

The cost of epoxy grouting threaded rods shall be included with Reinforcement Bars, Epoxy Coated.

Plan dimensions and details relative to existing plans are subject to nominal construction variations. The Contractor shall field verify existing dimensions and details affecting new construction and make necessary approved adjustments prior to construction or ordering of materials. Such variations shall not be cause for additional compensation for a change in scope of the work, however, the Contractor will be paid for the quantity actually furnished at the unit price bid for the work.

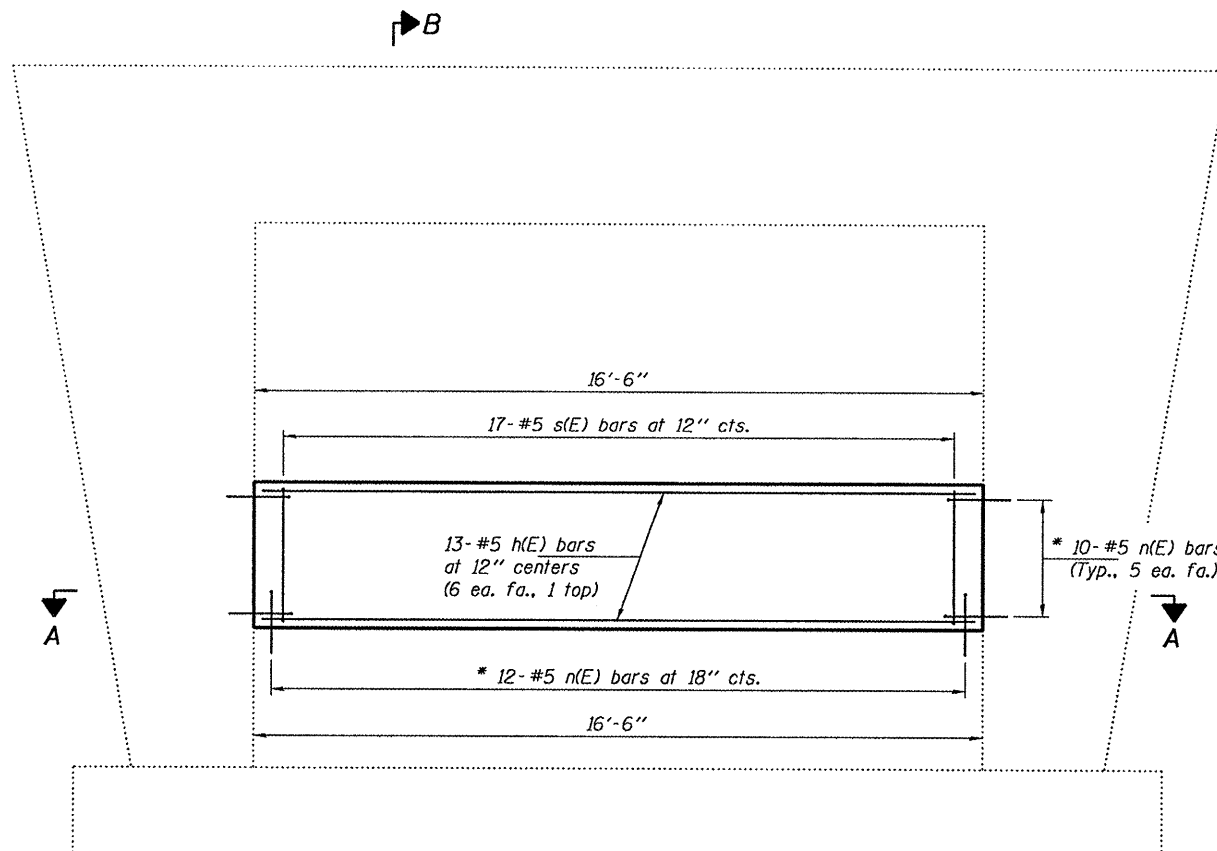
Reinforcement bars shall conform to the requirements of ASTM A 706 Gr 60. See Special Provisions.

Reinforcement bars designated (E) shall be epoxy coated.

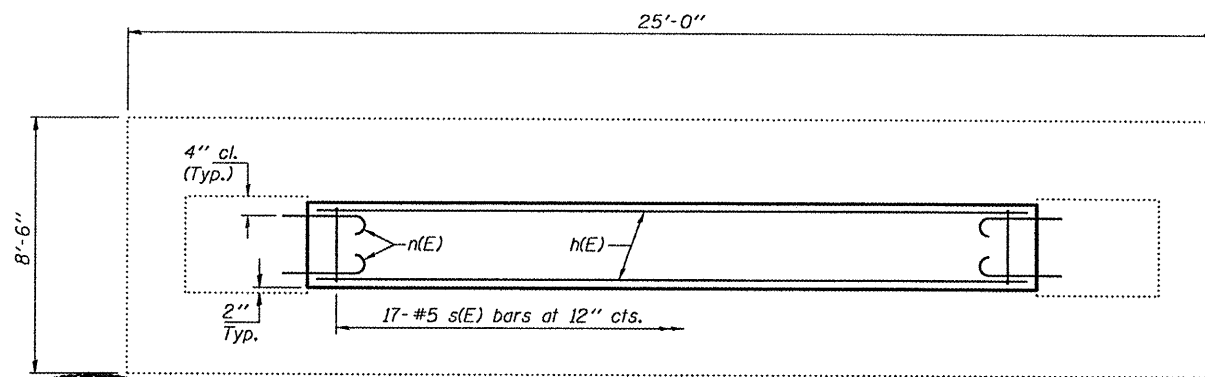


**SECTION B-B**

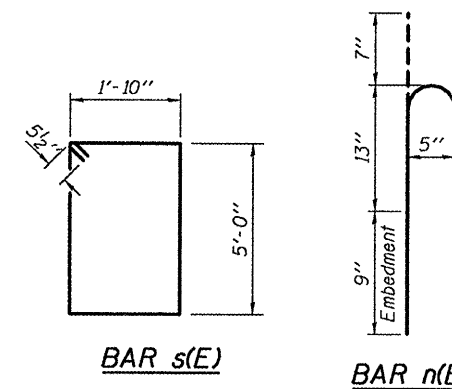
\* Epoxy grout n(E) bars in 9" min. holes according to Article 584 of the Standard Specifications.



**ELEVATION**



**SECTION A-A**



**BAR s(E)**

**BAR n(E)**

**BILL OF MATERIAL**

Bar	No.	Size	Length	Shape
h(E)	13	#5	16'-0"	—
n(E)	44	#5	2'-8"	⌒
s(E)	17	#5	14'-7"	□
Concrete Structures			Cu. Yd.	7.3
Reinforcement Bars, Epoxy Coated			Pound	590

**PIER IMPROVEMENT DETAILS**  
SN 041-0079

DESIGNED	<i>[Signature]</i>
CHECKED	<i>[Signature]</i>
DRAWN	Kyle M. Steffen
CHECKED	ISL <i>[Signature]</i>

EXAMINED	MAY 10, 2010	<i>[Signature]</i>
PASSED		<i>[Signature]</i>



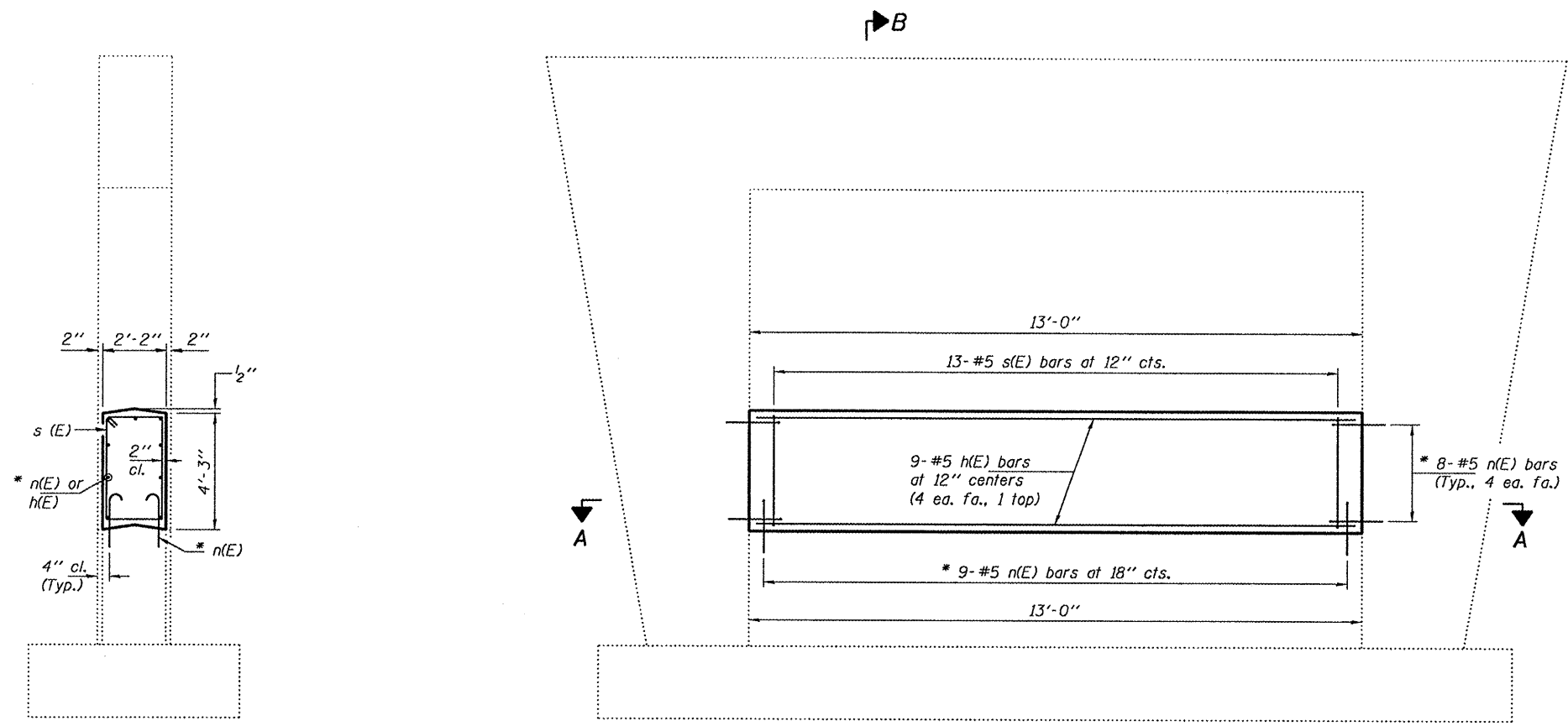
Expires: November 30, 2010

SHEET NO. 1	F.A.I. RTE.	SECTION	COUNTY	TOTAL SHEETS	SHEET NO.
	64	D9 SAFETY 2010-1	JEFFERSON	26	20
1 SHEETS			CONTRACT NO. 78192		
FED. ROAD DIST. NO.		ILLINOIS	FED. AID PROJECT		

STATE OF ILLINOIS  
DEPARTMENT OF TRANSPORTATION

**NOTES**

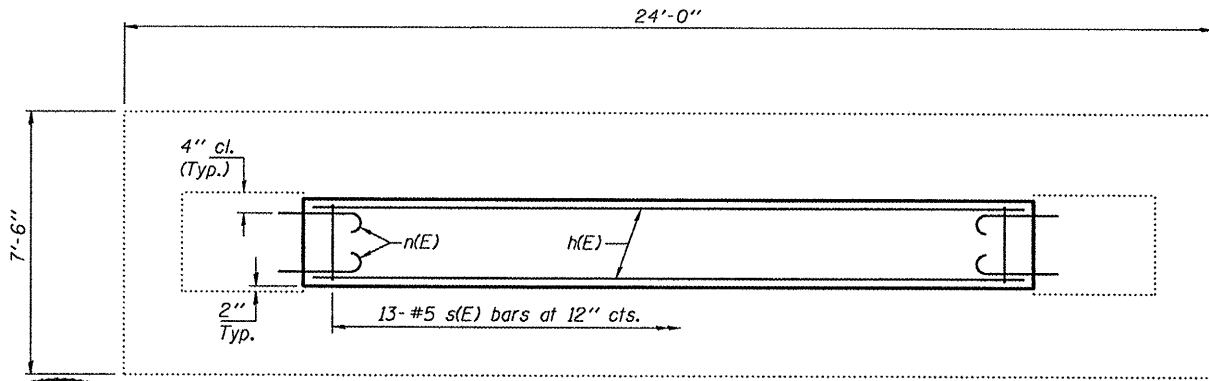
The cost of epoxy grouting threaded rods shall be included with Reinforcement Bars, Epoxy Coated.  
 Plan dimensions and details relative to existing plans are subject to nominal construction variations. The Contractor shall field verify existing dimensions and details affecting new construction and make necessary approved adjustments prior to construction or ordering of materials. Such variations shall not be cause for additional compensation for a change in scope of the work, however, the Contractor will be paid for the quantity actually furnished at the unit price bid for the work.  
 Reinforcement bars shall conform to the requirements of ASTM A 706 Gr 60. See Special Provisions.  
 Reinforcement bars designated (E) shall be epoxy coated.



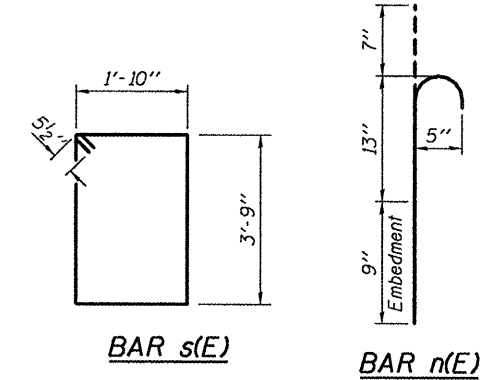
**SECTION B-B**

\* Epoxy grout n(E) bars in 9" min. holes according to Article 584 of the Standard Specifications.

**ELEVATION**



**SECTION A-A**



**BAR s(E)**

**BAR n(E)**

**BILL OF MATERIAL**

Bar	No.	Size	Length	Shape	
h(E)	9	#5	12'-6"	—	
n(E)	34	#5	2'-8"	—	
s(E)	13	#5	12'-1"	□	
Concrete Structures				Cu. Yd.	4.4
Reinforcement Bars, Epoxy Coated				Pound	370

**PIER IMPROVEMENT DETAILS  
SN 097-0050**

DESIGNED: *[Signature]*  
 CHECKED: *[Signature]*  
 DRAWN: Kyle M. Steffen  
 CHECKED: *[Signature]*

EXAMINED: *[Signature]* MAY 10, 2010  
 ENGINEER OF STRUCTURAL SERVICES  
 PASSED: *[Signature]*  
 ENGINEER OF BRIDGES AND STRUCTURES



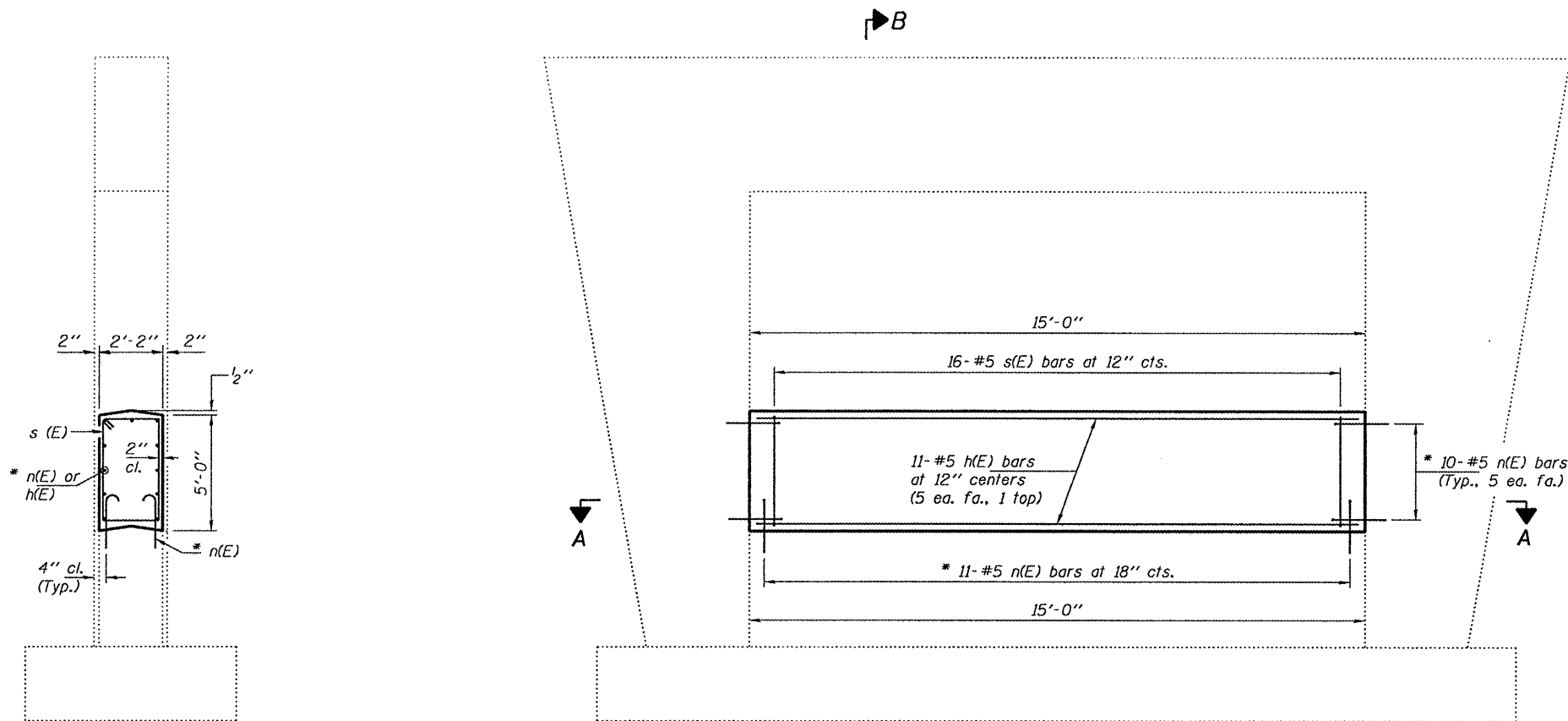
Expires: November 30, 2010

SHEET NO. 1 1 SHEETS	F.A.I. RTE.	SECTION	COUNTY	TOTAL SHEETS	SHEET NO.
	64	D9 SAFETY 2010-1	WHITE	26	21
FED. ROAD DIST. NO.			ILLINOIS	CONTRACT NO. 78192	
FED. AID PROJECT					

STATE OF ILLINOIS  
DEPARTMENT OF TRANSPORTATION

**NOTES**

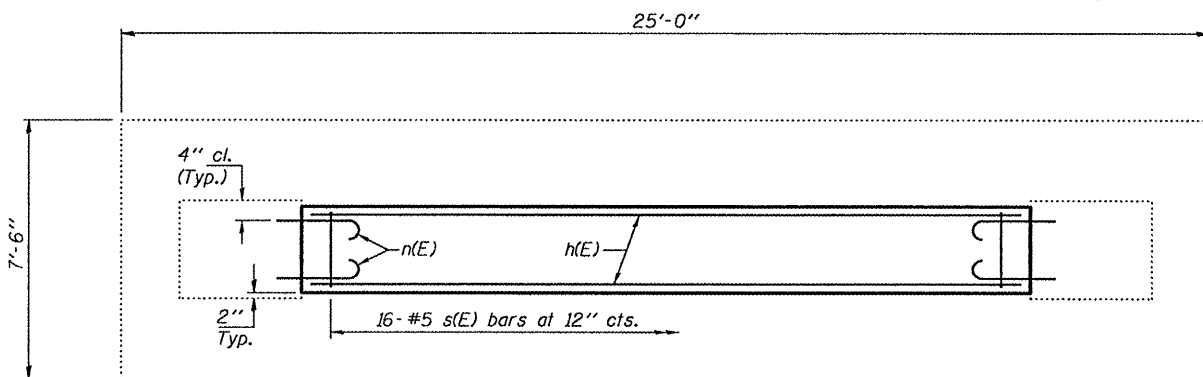
The cost of epoxy grouting threaded rods shall be included with Reinforcement Bars, Epoxy Coated.  
Plan dimensions and details relative to existing plans are subject to nominal construction variations. The Contractor shall field verify existing dimensions and details affecting new construction and make necessary approved adjustments prior to construction or ordering of materials. Such variations shall not be cause for additional compensation for a change in scope of the work, however, the Contractor will be paid for the quantity actually furnished at the unit price bid for the work.  
Reinforcement bars shall conform to the requirements of ASTM A 706 Gr 60. See Special Provisions.  
Reinforcement bars designated (E) shall be epoxy coated.



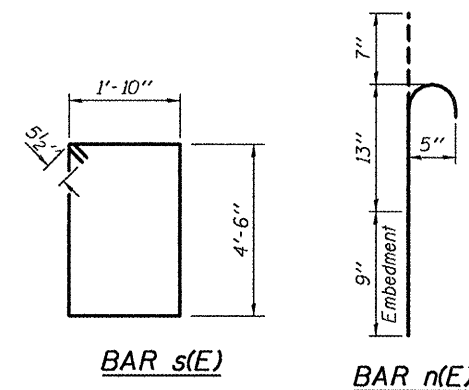
**SECTION B-B**

**ELEVATION**

\* Epoxy grout n(E) bars in 9" min. holes according to Article 584 of the Standard Specifications.



**SECTION A-A**



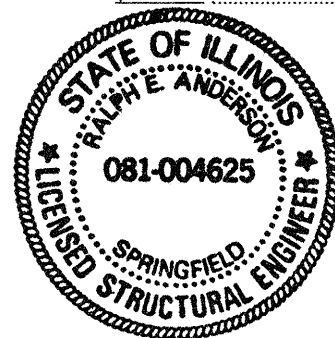
**BILL OF MATERIAL**

Bar	No.	Size	Length	Shape
h(E)	11	#5	14'-6"	—
n(E)	42	#5	2'-8"	—
s(E)	16	#5	13'-7"	□
Concrete Structures			Cu. Yd.	6.0
Reinforcement Bars, Epoxy Coated			Pound	500

**PIER IMPROVEMENT DETAILS**  
SN 097-0049

DESIGNED *[Signature]*  
CHECKED *[Signature]*  
DRAWN Kyle M. Steffen  
CHECKED *[Signature]*

EXAMINED *[Signature]*  
PASSED *[Signature]*  
ENGINEER OF STRUCTURAL SERVICES  
ENGINEER OF BRIDGES AND STRUCTURES



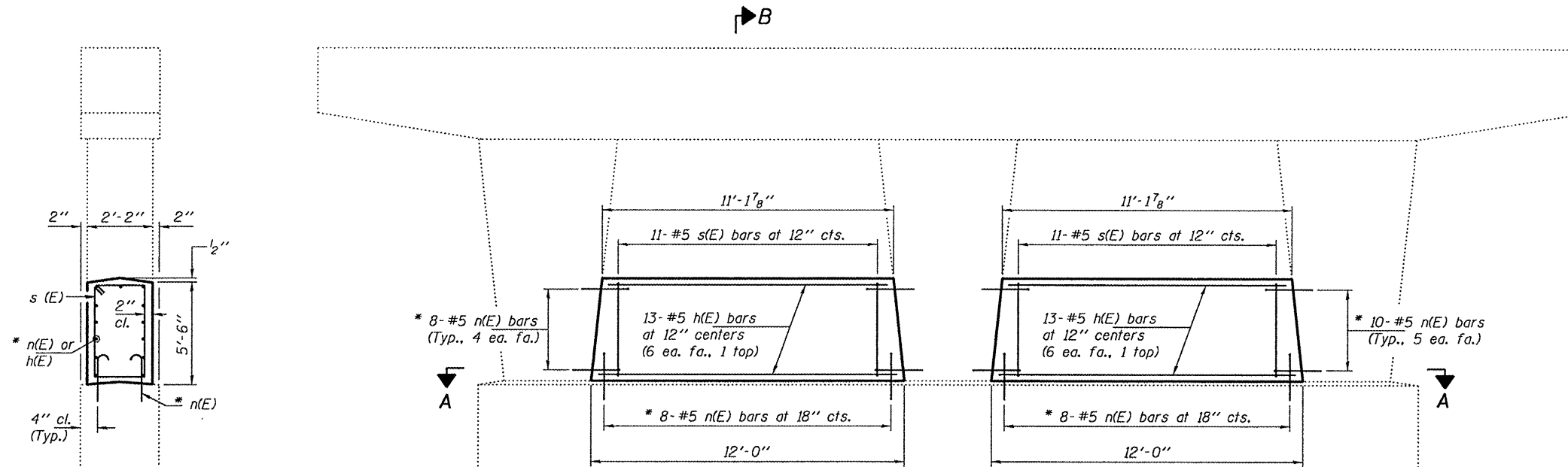
Expires: November 30, 2010

SHEET NO. 1 1 SHEETS	F.A.I. RTE.	SECTION	COUNTY	TOTAL SHEETS	SHEET NO.
	64	D9 SAFETY 2010-1	WHITE	26	22
FED. ROAD DIST. NO.			ILLINOIS FED. AID PROJECT		
CONTRACT NO. 78192					

STATE OF ILLINOIS  
DEPARTMENT OF TRANSPORTATION

**NOTES**

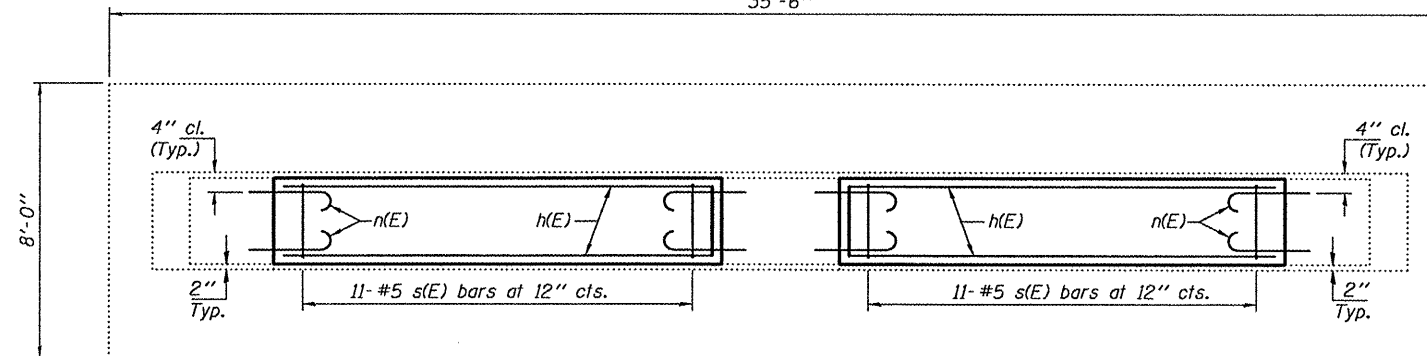
The cost of epoxy grouting threaded rods shall be included with Reinforcement Bars, Epoxy Coated.  
Plan dimensions and details relative to existing plans are subject to nominal construction variations. The Contractor shall field verify existing dimensions and details affecting new construction and make necessary approved adjustments prior to construction or ordering of materials. Such variations shall not be cause for additional compensation for a change in scope of the work, however, the Contractor will be paid for the quantity actually furnished at the unit price bid for the work.  
Reinforcement bars shall conform to the requirements of ASTM A 706 Gr 60. See Special Provisions.  
Reinforcement bars designated (E) shall be epoxy coated.



**SECTION B-B**

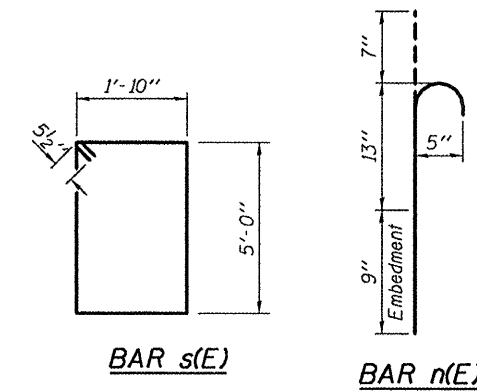
**ELEVATION**

35'-6"



**SECTION A-A**

\* Epoxy grout n(E) bars in 9" min. holes according to Article 584 of the Standard Specifications.



**BILL OF MATERIAL**

Bar	No.	Size	Length	Shape
h(E)	26	#5	11'-6"	—
n(E)	72	#5	2'-8"	⊔
s(E)	22	#5	14'-7"	□
Concrete Structures			Cu. Yd.	10.2
Reinforcement Bars, Epoxy Coated			Pound	840

**PIER IMPROVEMENT DETAILS  
SN 041-0062**

DESIGNED *[Signature]*  
CHECKED *[Signature]*  
DRAWN Kyle M. Steffen  
CHECKED IJL *[Signature]*

MAY 10, 2010  
EXAMINED *[Signature]*  
PASSED *[Signature]*  
ENGINEER OF STRUCTURAL SERVICES  
ENGINEER OF BRIDGES AND STRUCTURES



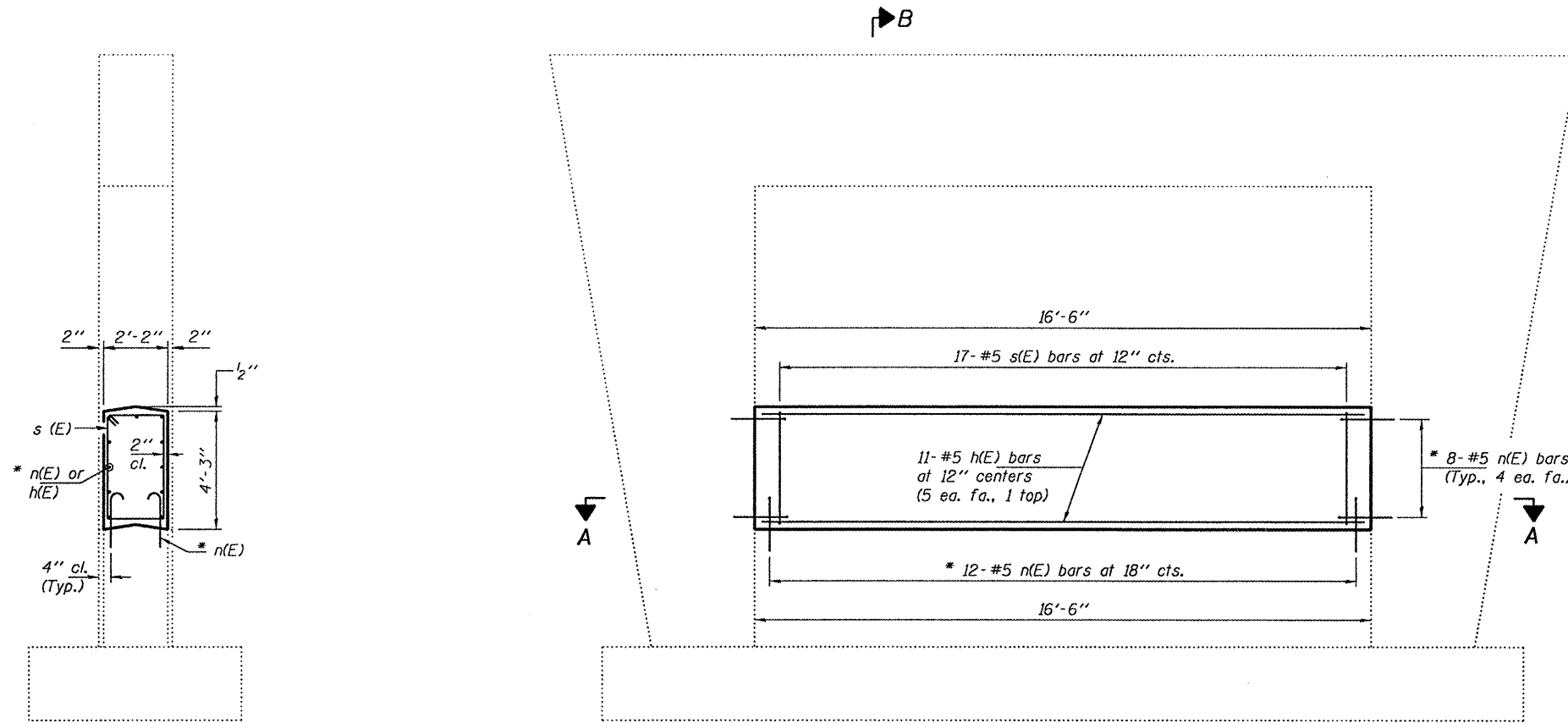
Expires: November 30, 2010

SHEET NO. 1 1 SHEETS	F.A.I. RTE.	SECTION	COUNTY	TOTAL SHEETS	SHEET NO.
	64	D9 SAFETY 2010-1	JEFFERSON	26	23
			CONTRACT NO. 78192		
FED. ROAD DIST. NO.		ILLINOIS FED. AID PROJECT			

STATE OF ILLINOIS  
DEPARTMENT OF TRANSPORTATION

**NOTES**

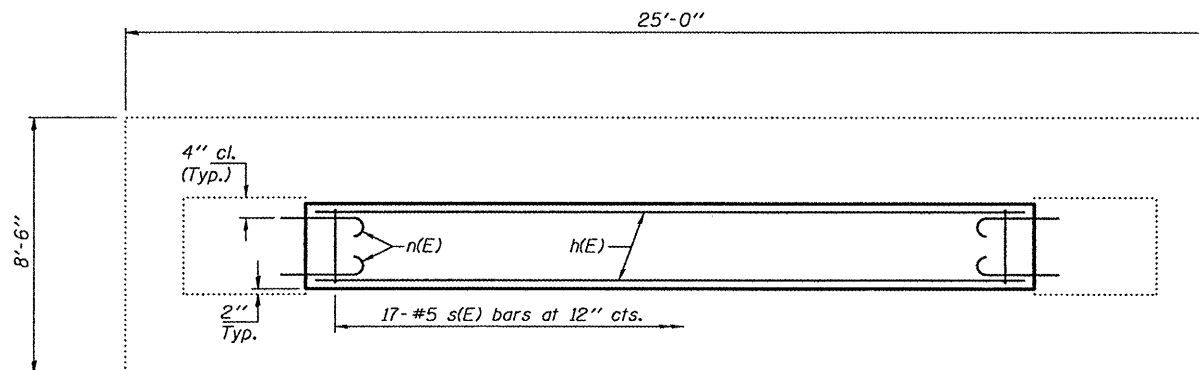
The cost of epoxy grouting threaded rods shall be included with Reinforcement Bars, Epoxy Coated.  
Plan dimensions and details relative to existing plans are subject to nominal construction variations. The Contractor shall field verify existing dimensions and details affecting new construction and make necessary approved adjustments prior to construction or ordering of materials. Such variations shall not be cause for additional compensation for a change in scope of the work, however, the Contractor will be paid for the quantity actually furnished at the unit price bid for the work.  
Reinforcement bars shall conform to the requirements of ASTM A 706 Gr 60. See Special Provisions.  
Reinforcement bars designated (E) shall be epoxy coated.



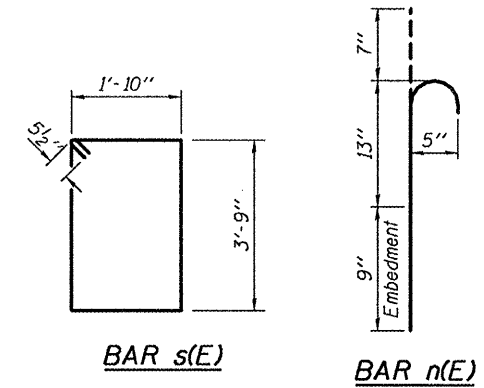
**SECTION B-B**

\* Epoxy grout n(E) bars in 9" min. holes according to Article 584 of the Standard Specifications.

**ELEVATION**



**SECTION A-A**



**BAR s(E)**

**BAR n(E)**

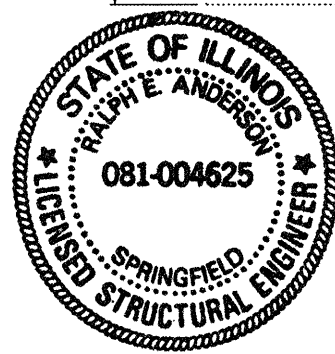
**BILL OF MATERIAL**

Bar	No.	Size	Length	Shape
h(E)	11	#5	16'-0"	—
n(E)	40	#5	2'-8"	—
s(E)	17	#5	12'-1"	□
Concrete Structures			Cu. Yd.	5.6
Reinforcement Bars, Epoxy Coated			Pound	500

**PIER IMPROVEMENT DETAILS**  
**SN 041-0080**

DESIGNED	<i>[Signature]</i>
CHECKED	<i>[Signature]</i>
DRAWN	Kyle M. Steffen
CHECKED	<i>[Signature]</i>

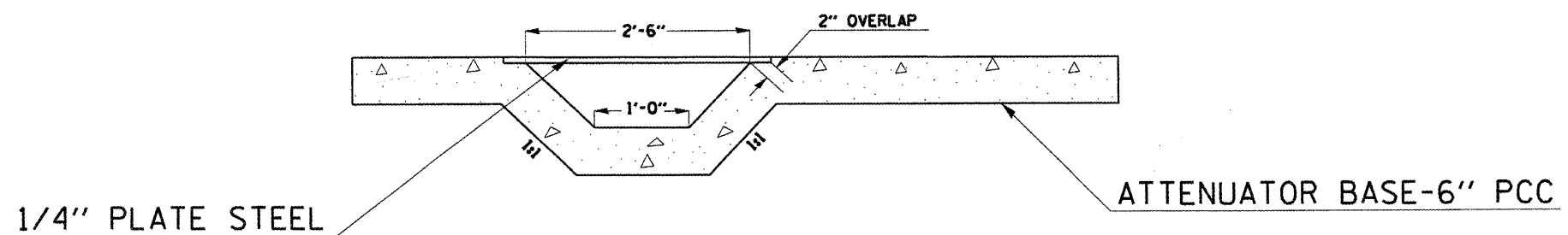
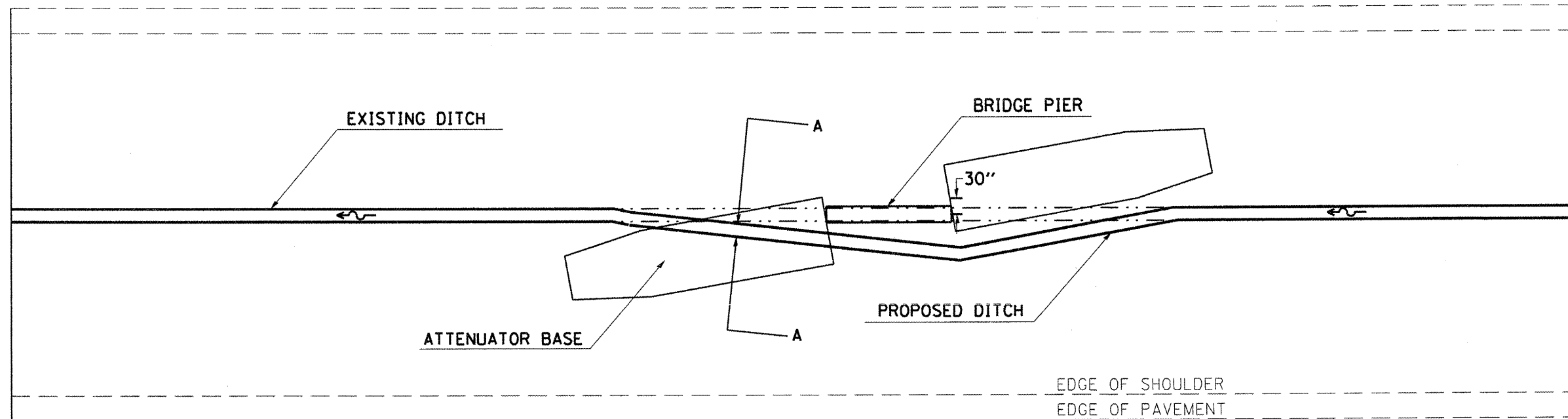
EXAMINED	<i>[Signature]</i>	MAY 10, 2010
PASSED	<i>[Signature]</i>	ENGINEER OF BRIDGES AND STRUCTURES



Expires: November 30, 2010

SHEET NO. 1	F.A.I. RTE.	SECTION	COUNTY	TOTAL SHEETS	SHEET NO.
	64	D9 SAFETY 2010-1	JEFFERSON	26	24
1 SHEETS	CONTRACT NO. 78192				
FED. ROAD DIST. NO.		ILLINOIS	FED. AID PROJECT		





SECTION A - A

THIS DETAIL APPLIES TO STRUCTURE NUMBERS: 041-0063  
 041-0069  
 041-0080  
 097-0049  
 097-0050

FILE NAME =	USER NAME = stoverpg	DESIGNED -	REVISD -	<b>STATE OF ILLINOIS DEPARTMENT OF TRANSPORTATION</b>	SCALE: _____ SHEET NO. _____ OF _____ SHEETS STA. _____ TO STA. _____	F.A.I. RTE.	SECTION	COUNTY	TOTAL SHEETS	SHEET NO.	
ct:\pvt\work\PWIDOT\STOVERPG\0182496\7812-shr-plen.dgn	PLOT SCALE = 100.0000 ' / IN.	DRAWN -	REVISD -			64	D9 SAFETY 2010-1	JEFFERSON & WHITE	26	25	
PLOT DATE = 3/15/2010	DATE -	CHECKED -	REVISD -			<b>CONTRACT NO. 78192</b>		ILLINOIS FED. AID PROJECT			

