

STATE OF ILLINOIS
DEPARTMENT OF TRANSPORTATION
DIVISION OF HIGHWAYS

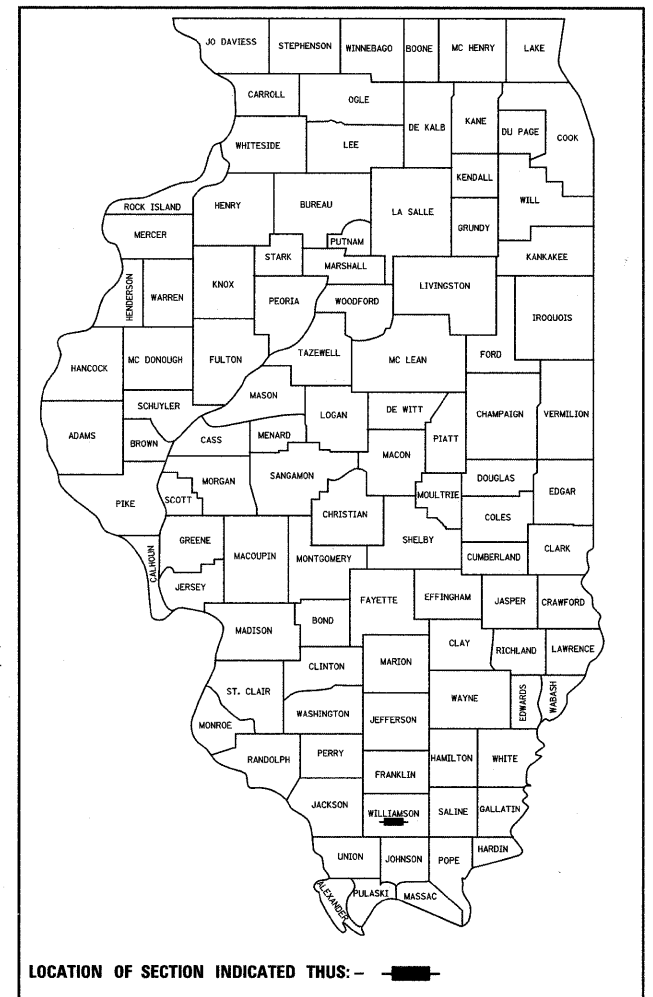
PROPOSED
HIGHWAY PLANS

FAI ROUTE 57 (I-57) & FAP 331 (IL 13)
SECTION: (X1-6-2)K-1;(1X-1)R-4
PROJECT NO: ACIM-ACNHF-000S(824)
TYPE of IMPROVEMENT
WILLIAMSON COUNTY

C-99-051-10

F.A. RTE.	SECTION	COUNTY	TOTAL SHEETS	SHEET NO.
*	(X1-6-2)K-1;(1X-1)R-4	WILLIAMSON	194	1
		ILLINOIS	CONTRACT NO. 78194	
* I-57/IL 13 (FAI 57/FAP 331)				

D-99-028-02



LOCATION OF SECTION INDICATED THUS: — ■ —

GEOTECH
 ENGINEERING & TESTING, INC.

601 NORTH 4th STREET MURRAY, KENTUCKY 42071 • 500 SOUTH 17th STREET PADUCAH, KENTUCKY 42003 • 403 NORTH COURT STREET MARION, ILLINOIS 62959
 PHONE - 270.753.7307 PHONE - 270.443.1995 PHONE - 618.997.9190
 WWW.GEOTECHENGINEERS.NET COPYRIGHT © 2009 - GEOTECH ENGINEERING & TESTING, INC.

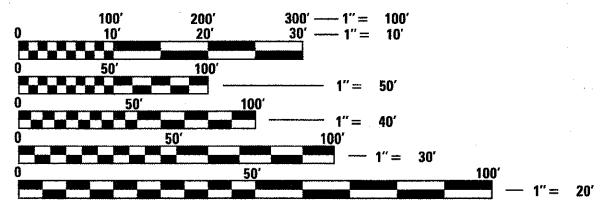
FOR INDEX OF SHEETS, SEE SHEET NO. 3
FOR SUMMARY OF QUANTITIES, SEE SHEETS NO. 6-16

STATON EQUATION:
 NONE

OMISSIONS:
 NONE

TRAFFIC DATA:
 2009 ADT FOR FAI 57 (I-57)
 37,560 WITH 32 % TRUCKS
 2009 ADT FOR FAP 331 (IL 13)
 40,405 WITH 7 % TRUCKS

TOWNSHIPS:
 W. MARION

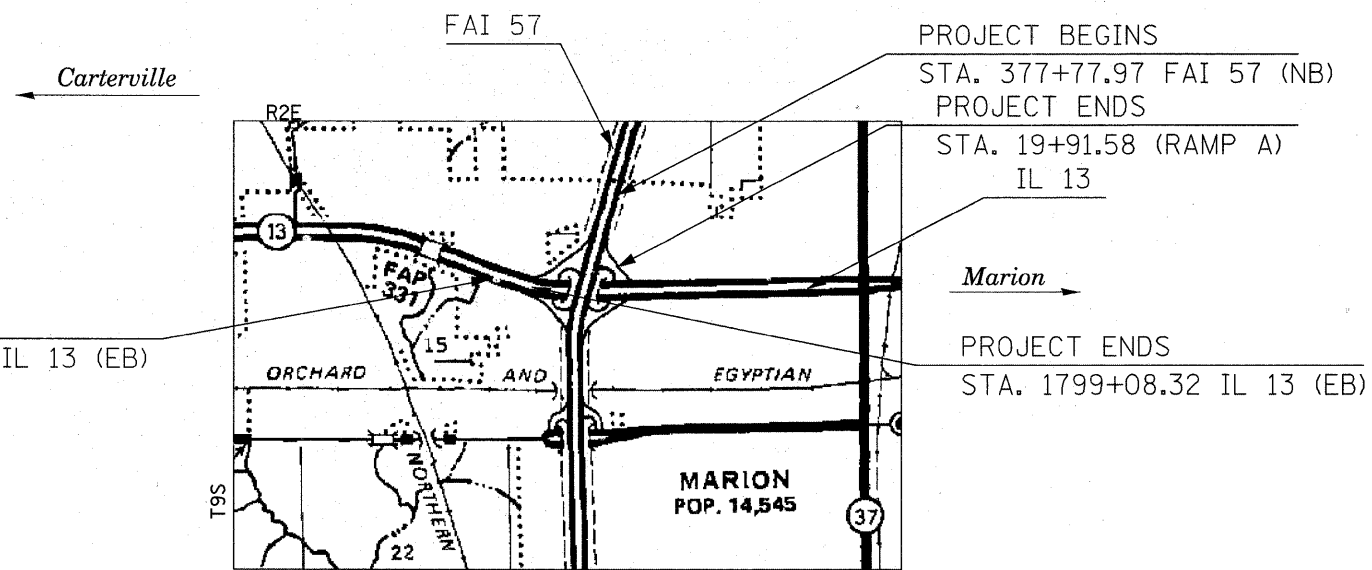


FULL SIZE PLANS HAVE BEEN PREPARED USING STANDARD ENGINEERING SCALES. REDUCED SIZED PLANS WILL NOT CONFORM TO STANDARD SCALES. IN MAKING MEASUREMENTS ON REDUCED PLANS, THE ABOVE SCALES MAY BE USED.

J.U.L.I.E.
 JOINT UTILITY LOCATION INFORMATION FOR EXCAVATION
 1-800-892-0123
 OR 811

PROJECT ENGINEER: CHARLES STEIN
PROJECT MANAGER: RICHARD BRASEL

CONTRACT NO. 78194



Kevin B. Reed
 3-12-10

FAI 57 (NB)	GROSS LENGTH OF PROJECT:	3222.03 FT. = 0.610 MILES
	NET LENGTH OF PROJECT:	3222.03 FT. = 0.610 MILES
FAI 57 (NB)	GROSS LENGTH OF IMPROVEMENT:	6835.28 FT. = 1.295 MILES
	NET LENGTH OF IMPROVEMENT:	6835.28 FT. = 1.295 MILES
FAP 331 (IL13)	GROSS LENGTH OF PROJECT:	2119.53 FT. = 0.401 MILES
	NET LENGTH OF PROJECT:	2119.53 FT. = 0.401 MILES

STATE OF ILLINOIS
 DEPARTMENT OF TRANSPORTATION
 DIVISION OF HIGHWAYS

SUBMITTED March 15, 2010
My C. Hamm
 DEPUTY DIRECTOR OF HIGHWAYS, REGION ENGINEER

May 7, 2010
Scott E. Stitt, P.E. /s/
 Acting ENGINEER OF DESIGN AND ENVIRONMENT

May 7, 2010
Christine M. Reed /s/
 DIRECTOR OF HIGHWAYS, CHIEF ENGINEER

PRINTED BY THE AUTHORITY
OF THE STATE OF ILLINOIS