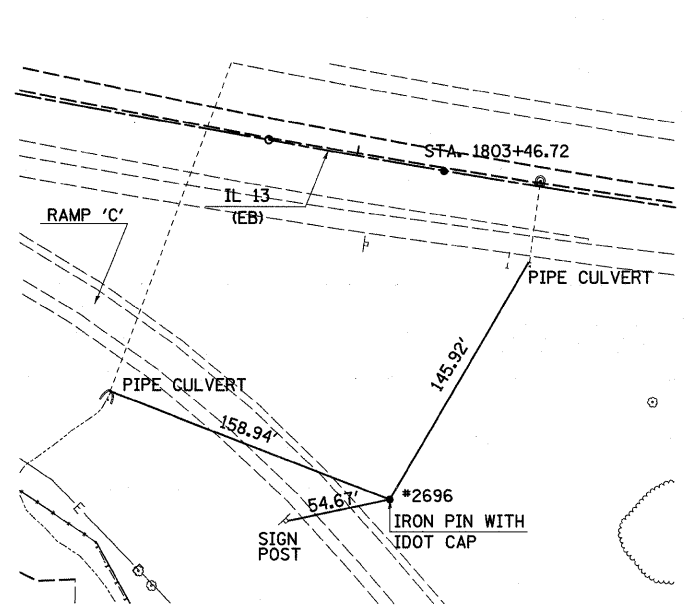


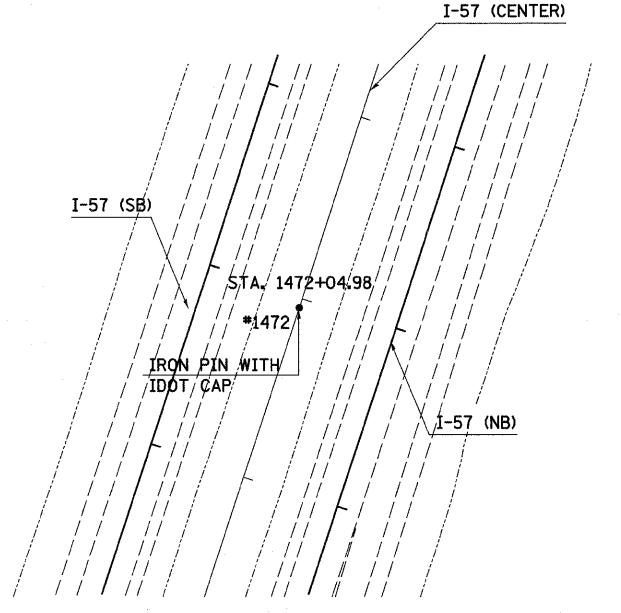
STA. 1793+68.55 RT. 51.51'
 STA. 1793+71.44 RT. 58.60

NOTE:
 STATIONING AND OFFSETS
 REFER TO IL 13 EB



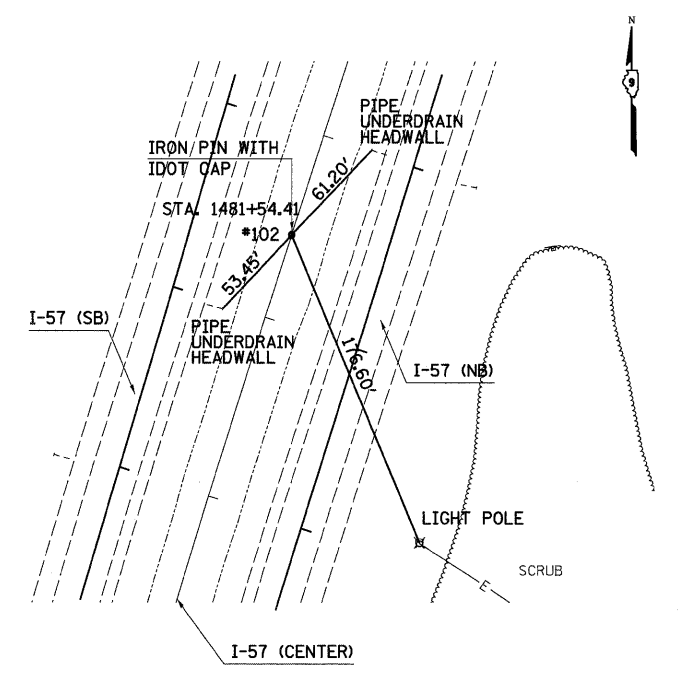
STA. 1803+46.72 RT. 176.39

NOTE:
 STATIONING AND OFFSETS
 REFER TO IL 13 EB



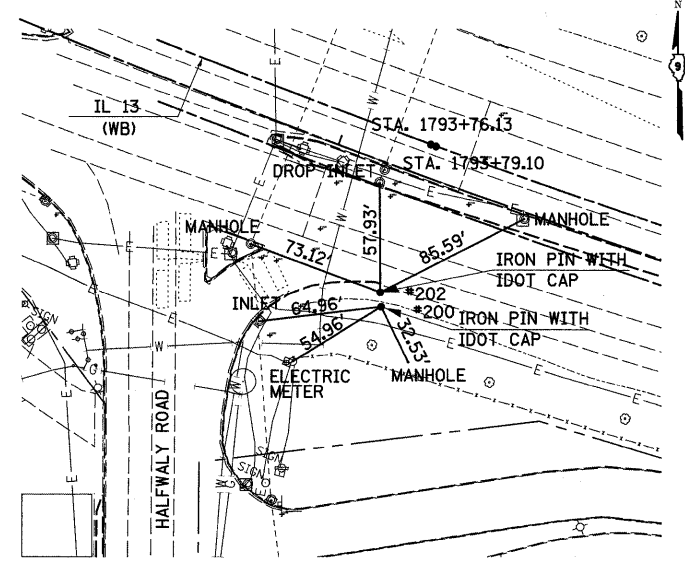
STA. 1472+04.98 RT. 0.15'

NOTE:
 STATIONING AND OFFSETS
 REFER TO I-57 CENTER



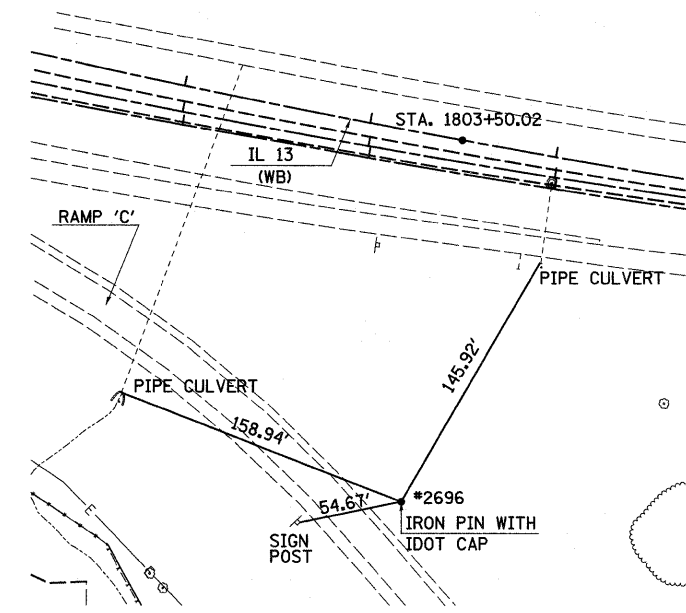
STA. 1481+54.41 LT. 0.06'

NOTE:
 STATIONING AND OFFSETS
 REFER TO I-57 CENTER



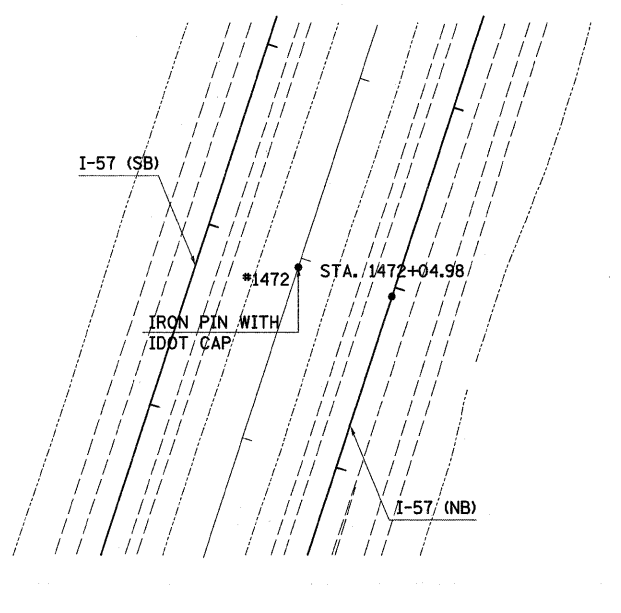
STA. 1793+73.13 RT. 81.51'
 STA. 1793+79.10 RT. 88.60'

NOTE:
 STATIONING AND OFFSETS
 REFER TO IL 13 WB



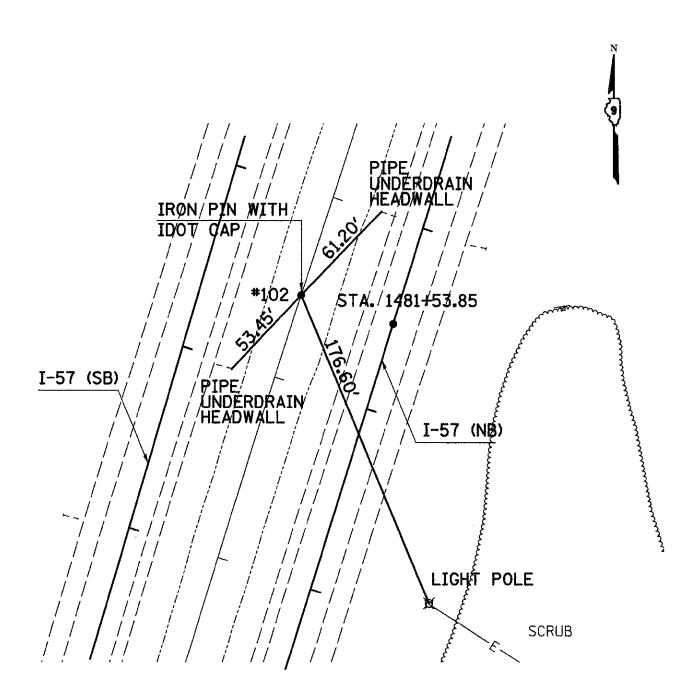
STA. 1803+50.02 RT. 193.80'

NOTE:
 STATIONING AND OFFSETS
 REFER TO IL 13 WB



STA. 1472+04.42 RT. 52.15'

NOTE:
 STATIONING AND OFFSETS
 REFER TO I-57 NB



STA. 1481+53.85 RT. 51.94'

NOTE:
 STATIONING AND OFFSETS
 REFER TO I-57 NB

FILE NAME =	USER NAME = #USER#	DESIGNED -	REVISED -
#FILE#		DRAWN -	REVISED -
	PLOT SCALE = #SCALE#	CHECKED -	REVISED -
	PLOT DATE = #DATE#	DATE -	REVISED -

**STATE OF ILLINOIS
 DEPARTMENT OF TRANSPORTATION**

TIE POINTS	
SCALE: 50	SHEET NO. 1 OF 1 SHEET
STA.	TO STA.

F.A. RTE.	SECTION	COUNTY	TOTAL SHEETS	SHEET NO.
*	(X1-6-2X-1)(X-1R-4	WILLIAMSON	194	49
* I-57/IL 13 (FAI 57/FAP 331)		CONTRACT NO. 78194		
[ILLINOIS] FED. AID PROJECT				