

TT TYPE 3 BARRICADE
 PAVEMENT REMOVAL AND PLACEMENT OF FULL DEPTH ASPHALT
 PROPOSED FULL DEPTH ASPHALT

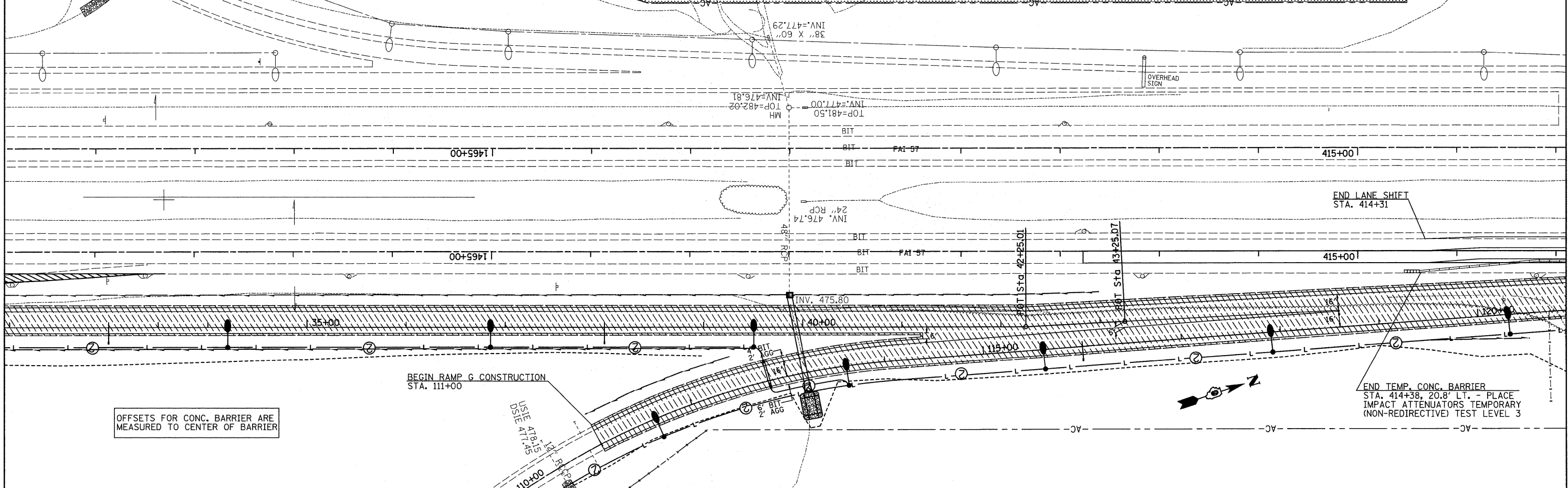
NOTES:

RAMP G / I 57

1. CONSTRUCT TIE-IN OF RAMP G TO NORTHBOUND I 57 AS FOLLOWS:
 - A. SHIFT TRAFFIC ON I 57 TO INSIDE SHOULDER
 - B. REMOVE EXISTING PAVED SHOULDER
 - C. CONSTRUCT RAMP TO FULL DEPTH ASPHALT
2. KEEP 2 LANES OPEN ON I 57 AT ALL TIMES

RAMP A

1. ONE NIGHTTIME LANE CLOSURE IS ALLOWED TO MAKE THE CONNECTION OF EXISTING RAMP A AND PROPOSED RAMP A



OFFSETS FOR CONC. BARRIER ARE MEASURED TO CENTER OF BARRIER

FILE NAME = #FILE#	USER NAME = #USER#	DESIGNED -	REVISED -	STATE OF ILLINOIS DEPARTMENT OF TRANSPORTATION	STAGE 3 RAMPS A & G		F.A. RTE.	SECTION	COUNTY	TOTAL SHEETS	SHEET NO.
	PLOT SCALE = #SCALE#	DRAWN -	REVISED -		SCALE:	SHEET NO. 1 OF 3 SHEETS	STA.		WILLIAMSON	194	74
	PLOT DATE = #DATE#	CHECKED -	REVISED -				TO STA.		CONTRACT NO. 78194		
		DATE -	REVISED -						ILLINOIS FED. AID PROJECT		