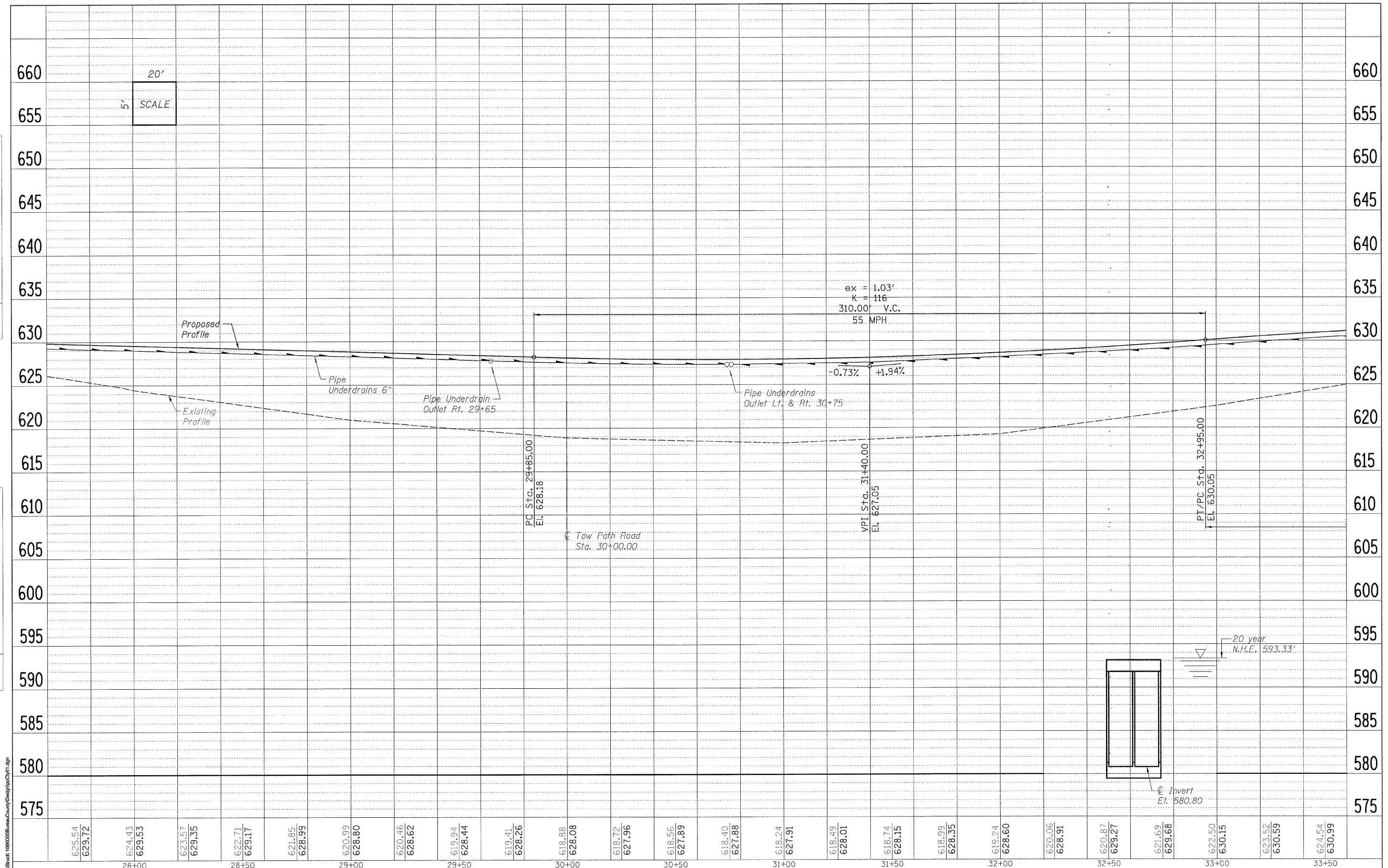


PLAN	SURVEYED	DATE
NOTE BOOK	ALIGNED	BY
NO.	CHECKED	
	BY	
	DATE	

PROFILE	SURVEYED	DATE
NOTE BOOK	GRADES CHECKED	BY
NO.	BY	
	DATE	



$e_x = 1.03'$   
 $K = 116$   
 310.00' V.C.  
 55 MPH

-0.73% +1.94%

Tow Path Road  
 Sta. 30+00.00

FILE NAME = s:\Struct\10810000\Bureau\County\Design\p\ch8\1.dgn

**WILLET, HOFMANN & ASSOCIATES, INC.**  
**CONSULTING ENGINEERS**  
 809 East Second Street Dixon, IL 61021  
 Phone 815.284.3381 Fax 815.294.3385  
 Design Firm # 184-00818  
 www.willetthofmann.com

USER NAME =	DESIGNED -	REVISED -
	DRAWN -	REVISED -
PLOT SCALE =	CHECKED -	REVISED -
PLOT DATE =	DATE -	REVISED -

**BUREAU COUNTY**  
**BRIDGE REPLACEMENT**  
**FAS 188 (C.H. 8) OVER IAIS RAILROAD & THE HENNEPIN CANAL**

**C.H. 8 - PROFILE**

F.A.S.	SECTION	COUNTY	TOTAL SHEET NO.
188	05-00195-00-BR	BUREAU	127 15
STA. 27+60 TO STA. 33+60		CONTRACT NO. 81380	
FED. ROAD DIST. NO. 1 ILLINOIS FED. AID PROJECT BRS-0188(118)			