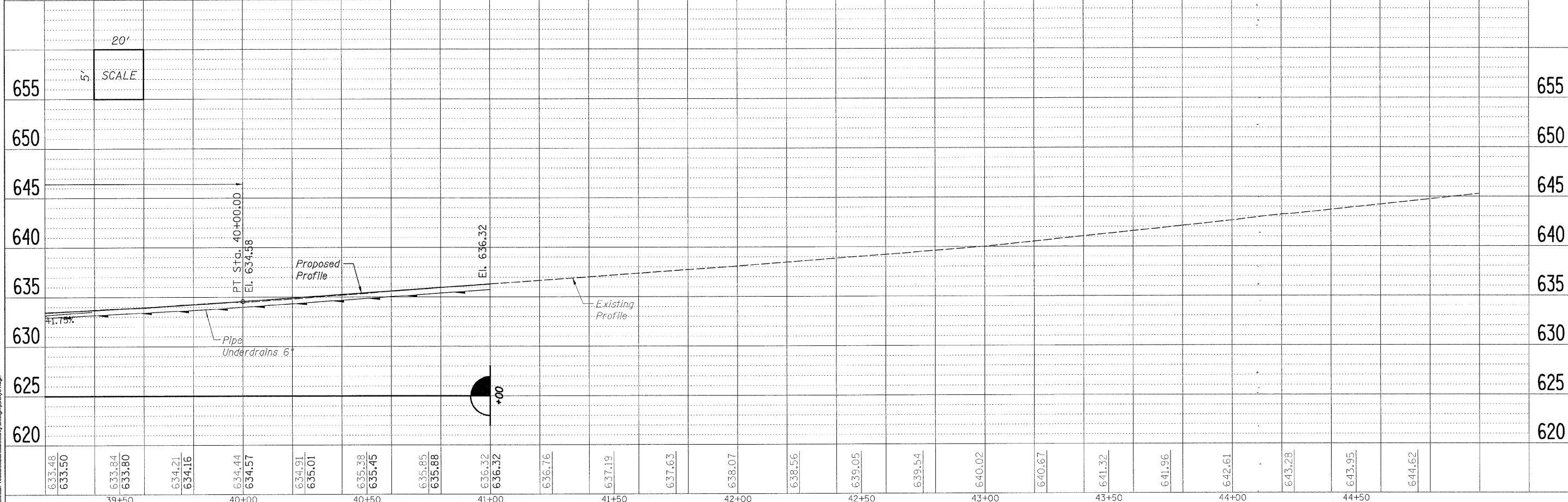
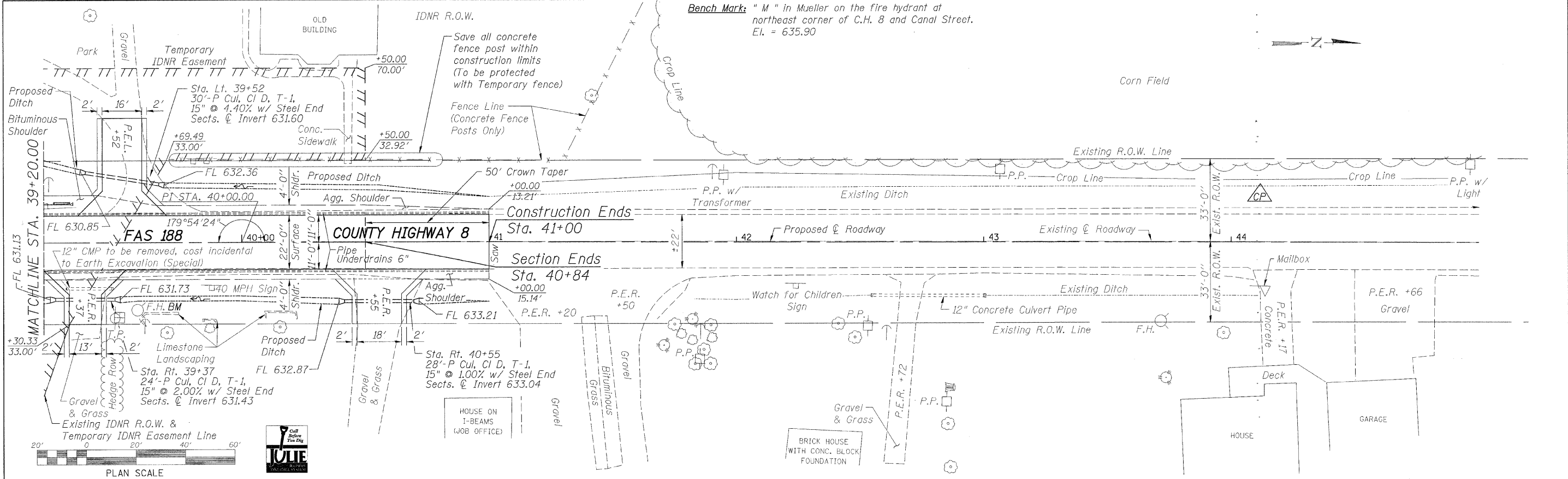


DATE	
BY	
PLAN	SURVEYED
	ALIGNED
	CHECKED
	BY
	DATE
	NO.

DATE	
BY	
PROFILE	SURVEYED
	ALIGNED
	CHECKED
	BY
	DATE
	NO.



633.48	633.50	633.84	633.80	634.21	634.16	634.44	634.57	634.91	635.01	635.38	635.45	635.85	635.88	636.32	636.32	636.76	637.19	637.63	638.07	638.56	639.05	639.54	640.02	640.67	641.32	641.96	642.61	643.28	643.95	644.62
39+50		40+00		40+50		41+00		41+50		42+00		42+50		43+00		43+50		44+00		44+50										

**WILLET, HOFMANN & ASSOCIATES, INC.**  
**CONSULTING ENGINEERS**  
 809 East Second Street Dixon, IL 61021  
 Phone 815.284.3381 Fax 815.284.3385  
 Design Firm # 184-00918  
 www.willettthofmann.com

USER NAME =	DESIGNED -	REVISED -
PLOT SCALE =	DRAWN -	REVISED -
PLOT DATE =	CHECKED -	REVISED -
	DATE -	REVISED -

**BUREAU COUNTY**  
**BRIDGE REPLACEMENT**  
**FAS 188 (C.H. 8) OVER IAIS RAILROAD & THE HENNEPIN CANAL**

**C.H. 8 - PLAN & PROFILE**

F.A.S.	SECTION	COUNTY	TOTAL SHEETS	SHEET NO.
188	05-00195-00-BR	BUREAU	127	18
STA. 39+20 TO STA. 45+00		CONTRACT NO. 81380		
FED. ROAD DIST. NO. 1 ILLINOIS FED. AID PROJECT BRS-0188018				