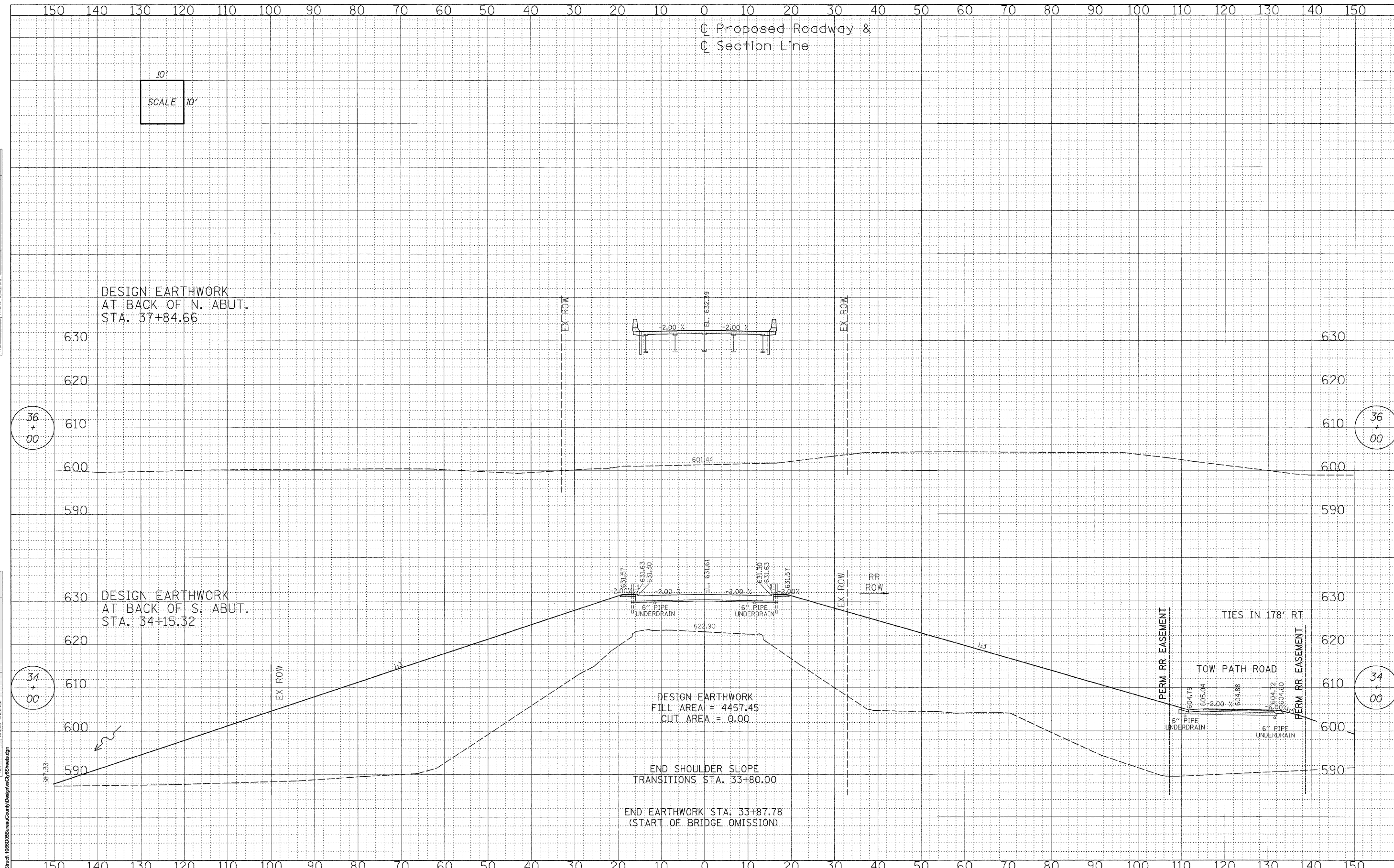


DATE	
BY	
DESIGNED	
DRAWN	
CHECKED	
DATE	
NO.	

DATE	
BY	
DESIGNED	
DRAWN	
CHECKED	
DATE	
NO.	



FILE NAME = s:\Struct\1080056.mau\County\Design\CrossSections.dgn

WILLET, HOFMANN & ASSOCIATES, INC.
CONSULTING ENGINEERS
 809 East Second Street Dixon, IL 61021
 Phone 815.284.3381 Fax 815.284.3385
 Design Firm # 184-0018
 www.willettthofmann.com

USER NAME =	DESIGNED -	REVISED -
PLOT SCALE =	DRAWN -	REVISED -
PLOT DATE =	CHECKED -	REVISED -
	DATE -	REVISED -

BUREAU COUNTY
BRIDGE REPLACEMENT
FAS 188 (C.H. 8) OVER IAIS RAILROAD & THE HENNEPIN CANAL

C.H. 8 / TOW PATH RD - CROSS SECTIONS

F.A.S. RTE.	SECTION	COUNTY	TOTAL SHEETS	SHEET NO.
188	05-00195-00-BR	BUREAU	127	26
STA. 34+00.00 TO STA. 36+00.00 CONTRACT NO. B7380				
FED. ROAD DIST. NO. 7 [ILLINOIS] FED. AID PROJECT BRS-0189(118)				