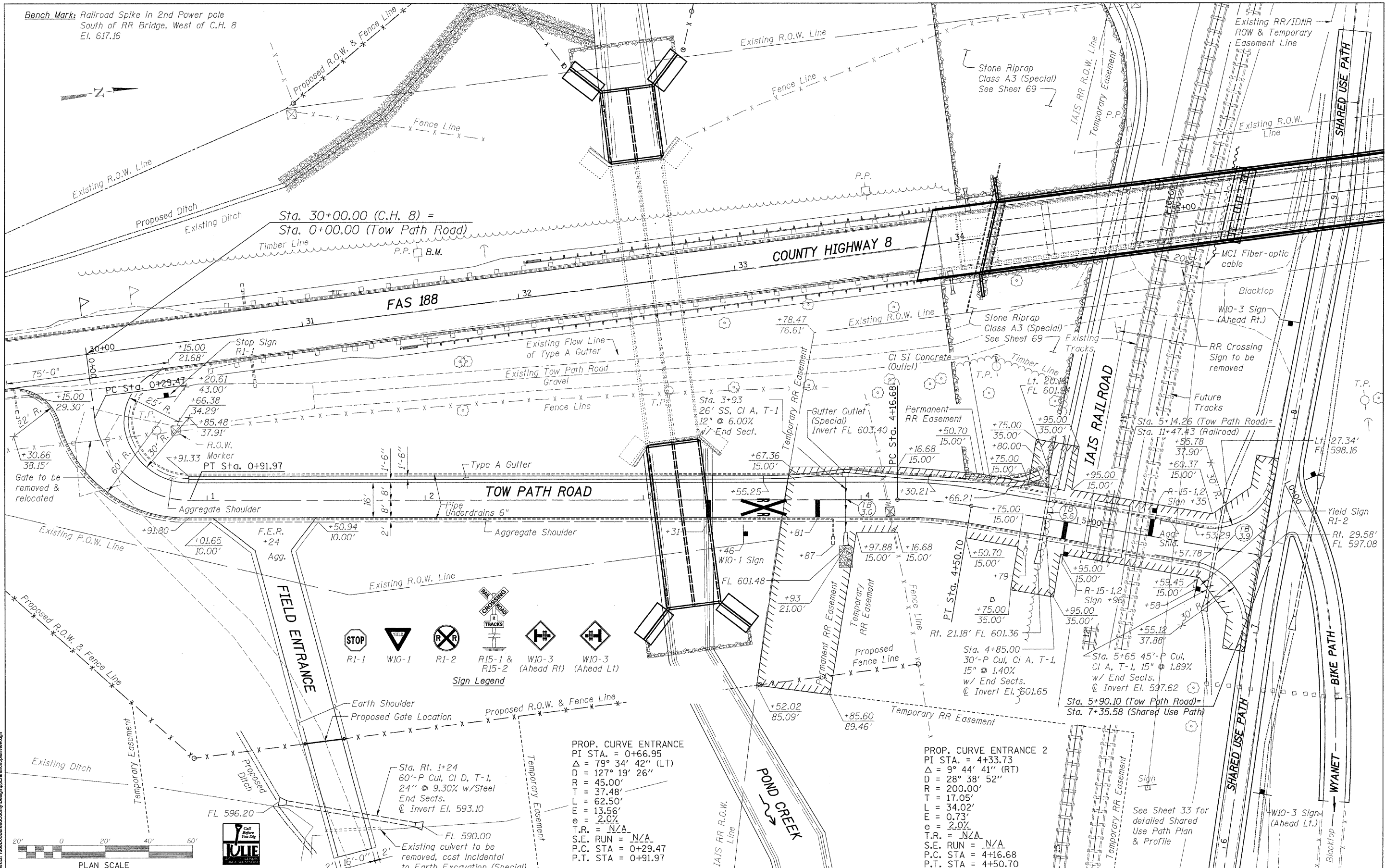


Bench Mark: Railroad Spike in 2nd Power pole  
South of RR Bridge, West of C.H. 8  
El. 617.16

DATE	
BY	
REVISIONS	
NO. DATE	
1	
2	
3	
4	
5	
6	
7	
8	
9	
10	
11	
12	
13	
14	
15	
16	
17	
18	
19	
20	
21	
22	
23	
24	
25	
26	
27	
28	
29	
30	
31	
32	
33	
34	
35	
36	
37	
38	
39	
40	
41	
42	
43	
44	
45	
46	
47	
48	
49	
50	
51	
52	
53	
54	
55	
56	
57	
58	
59	
60	
61	
62	
63	
64	
65	
66	
67	
68	
69	
70	
71	
72	
73	
74	
75	
76	
77	
78	
79	
80	
81	
82	
83	
84	
85	
86	
87	
88	
89	
90	
91	
92	
93	
94	
95	
96	
97	
98	
99	
100	

DATE	
BY	
REVISIONS	
NO. DATE	
1	
2	
3	
4	
5	
6	
7	
8	
9	
10	
11	
12	
13	
14	
15	
16	
17	
18	
19	
20	
21	
22	
23	
24	
25	
26	
27	
28	
29	
30	
31	
32	
33	
34	
35	
36	
37	
38	
39	
40	
41	
42	
43	
44	
45	
46	
47	
48	
49	
50	
51	
52	
53	
54	
55	
56	
57	
58	
59	
60	
61	
62	
63	
64	
65	
66	
67	
68	
69	
70	
71	
72	
73	
74	
75	
76	
77	
78	
79	
80	
81	
82	
83	
84	
85	
86	
87	
88	
89	
90	
91	
92	
93	
94	
95	
96	
97	
98	
99	
100	



**WILHOF**  
**WILLETT, HOFMANN & ASSOCIATES, INC.**  
 CONSULTING ENGINEERS  
 809 East Second Street Dixon, IL 61021  
 Phone 815.294.3381 Fax 815.294.3385  
 Design Firm # 184-0918  
 www.willett-hofmann.com

USER NAME =	DESIGNED -	REVISED -
PLOT SCALE =	DRAWN -	REVISED -
PLOT DATE =	CHECKED -	REVISED -
	DATE -	REVISED -

**BUREAU COUNTY**  
**BRIDGE REPLACEMENT**  
**FAS 188 (C.H. 8) OVER IAIS RAILROAD & THE HENNEPIN CANAL**

**TOW PATH ROAD - PLAN**

F.A.S.	SECTION	COUNTY	TOTAL SHEETS
188	05-00195-00-BR	BUREAU	127 30
STA. 0+00 TO STA. 5+75		CONTRACT NO. 97380	
FED. ROAD DIST. NO. 7 ILLINOIS FED. AID PROJECT BRS-0189118			