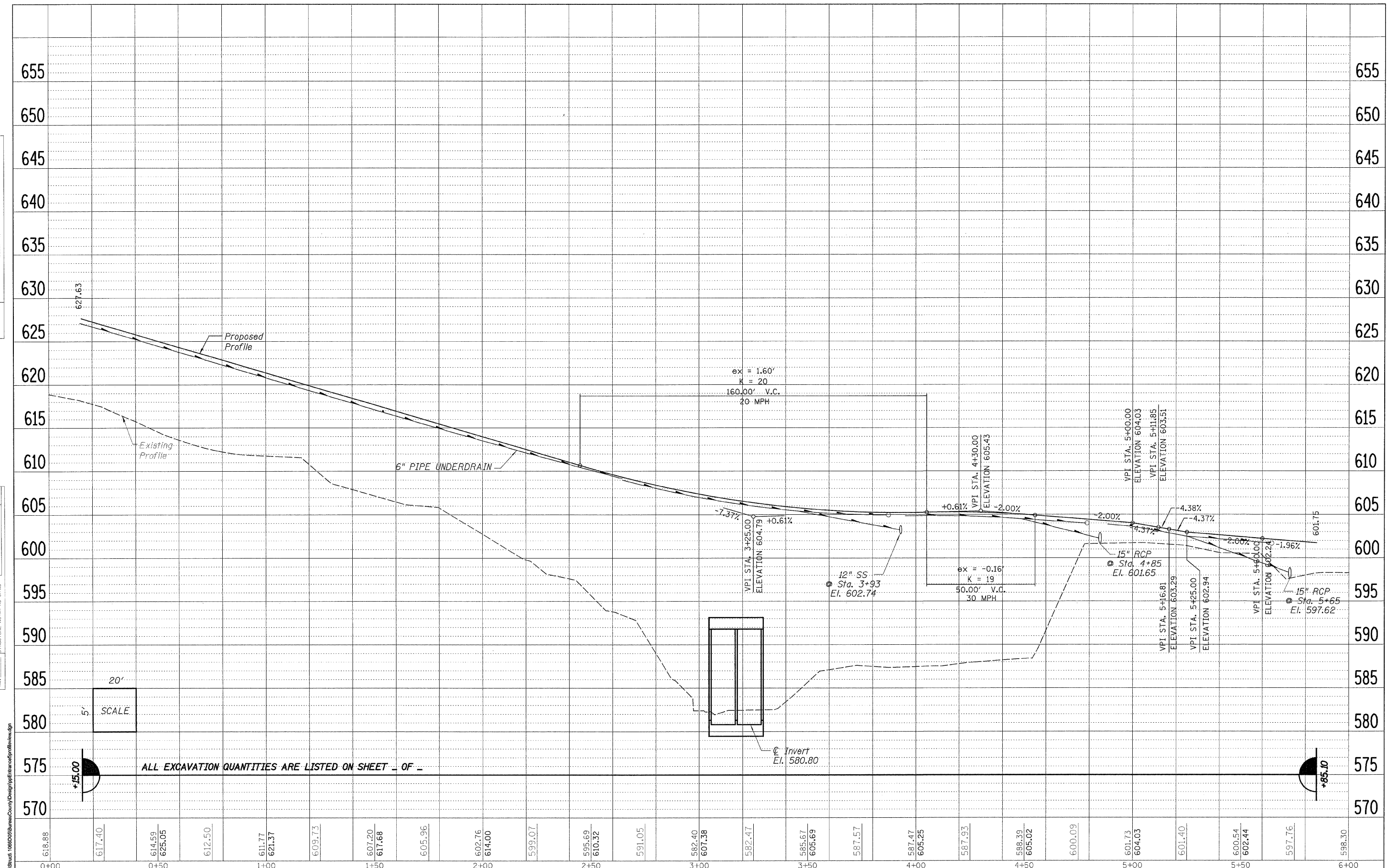


PLAN	SERVED	DATE
	PLOTTED	
	NOTED	
	BY	
	NO.	

PROFILE	SERVED	DATE
	PLOTTED	
	NOTED	
	BY	
	NO.	



FILE NAME = s:\Stuort\1088009\BureauCounty\Design\Profile\Profile.dgn

20'
5' SCALE

ALL EXCAVATION QUANTITIES ARE LISTED ON SHEET - OF -

618.88	617.40	614.59	612.50	611.77	609.73	607.20	605.96	602.76	599.07	595.69	591.05	582.40	582.47	585.67	587.57	587.47	587.93	588.39	600.09	601.73	601.40	600.54	597.76	598.30	
0+00	0+50	1+00	1+50	2+00	2+50	3+00	3+50	4+00	4+50	5+00	5+50	6+00													

WILLET, HOFMANN & ASSOCIATES, INC.
CONSULTING ENGINEERS
 809 East Second Street Dixon, IL 61021
 Phone: 815.284.3381 Fax: 815.284.3385
 Design Firm # 184-00818
 www.willett-hofmann.com

USER NAME =	DESIGNED -	REVISED -
PLOT SCALE =	DRAWN -	REVISED -
PLOT DATE =	CHECKED -	REVISED -
	DATE	REVISED -

BUREAU COUNTY
BRIDGE REPLACEMENT
FAS 188 (C.H. 8 OVER IAS RAILROAD & THE HENNEPIN CANAL)

TOW PATH ROAD - PROFILE

F.A.S.	SECTION	COUNTY	TOTAL SHEETS	SHEET NO.
188	05-00195-00-BR	BUREAU	127	31
STA. 0+00 TO STA. 6+00		CONTRACT NO. 07380		
FED. ROAD DIST. NO. 2 ILLINOIS FED. AID PROJECT BR5-0188(118)				