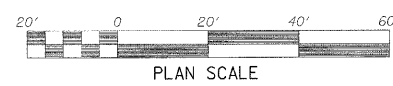
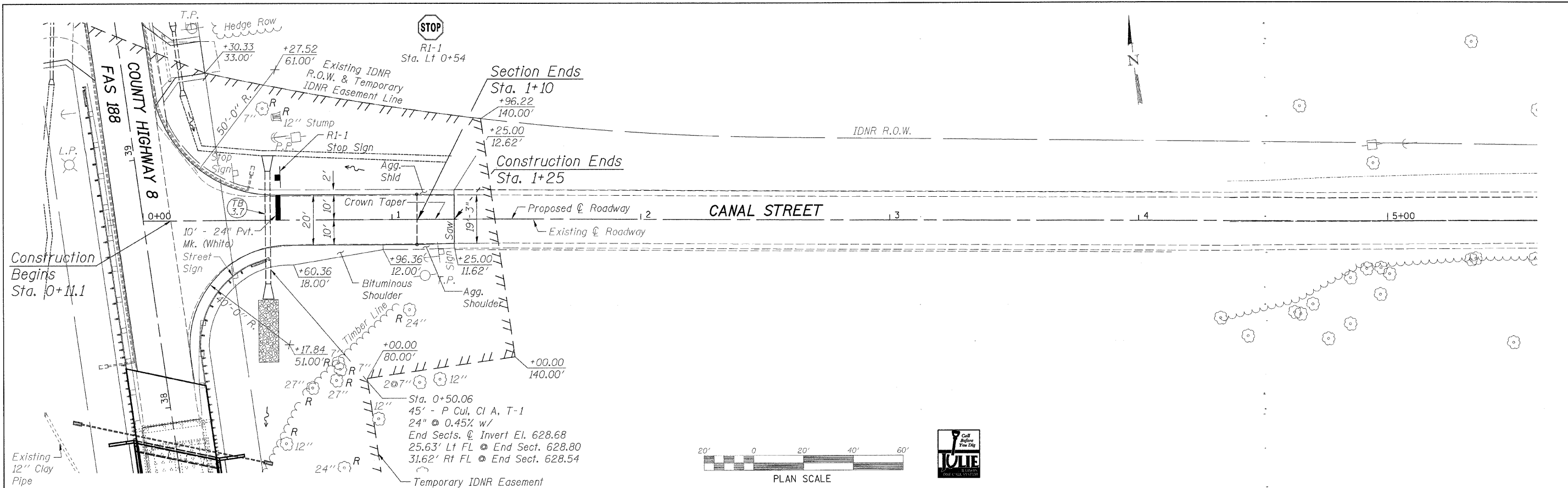


DATE	
BY	
PLANNED	
DESIGNED	
DRAWN	
CHECKED	
DATE	
BY	
DATE	
BY	

DATE	
BY	
PLANNED	
DESIGNED	
DRAWN	
CHECKED	
DATE	
BY	
DATE	
BY	



FILE NAME: s:\Bureau\1066008\Bureau\County\Design\pp\CANAL.Bgn

WILLET, HOFMANN & ASSOCIATES, INC.
CONSULTING ENGINEERS
 808 East Second Street Dixon, IL 61021
 Phone 815.284.3381 Fax 815.284.3385
 Design Firm # 184-00918
 www.willetthofmann.com

USER NAME =	DESIGNED -	REVISED -
DRAWN =	REVISED -	REVISED -
CHECKED =	REVISED -	REVISED -
DATE =	REVISED -	REVISED -

BUREAU COUNTY
BRIDGE REPLACEMENT
FAS 188 (C.H. 8) OVER IAIS RAILROAD & THE HENNEPIN CANAL

CANAL STREET - PLAN & PROFILE

F.A.S.	SECTION	COUNTY	TOTAL SHEETS
188	05-00195-00-BR	BUREAU	127 40
STA. 0+00 TO STA. 5+75		CONTRACT NO.	81380
FED. ROAD DIST. NO. 7 ILLINOIS FED. AID PROJECT BRS-0188(118)			