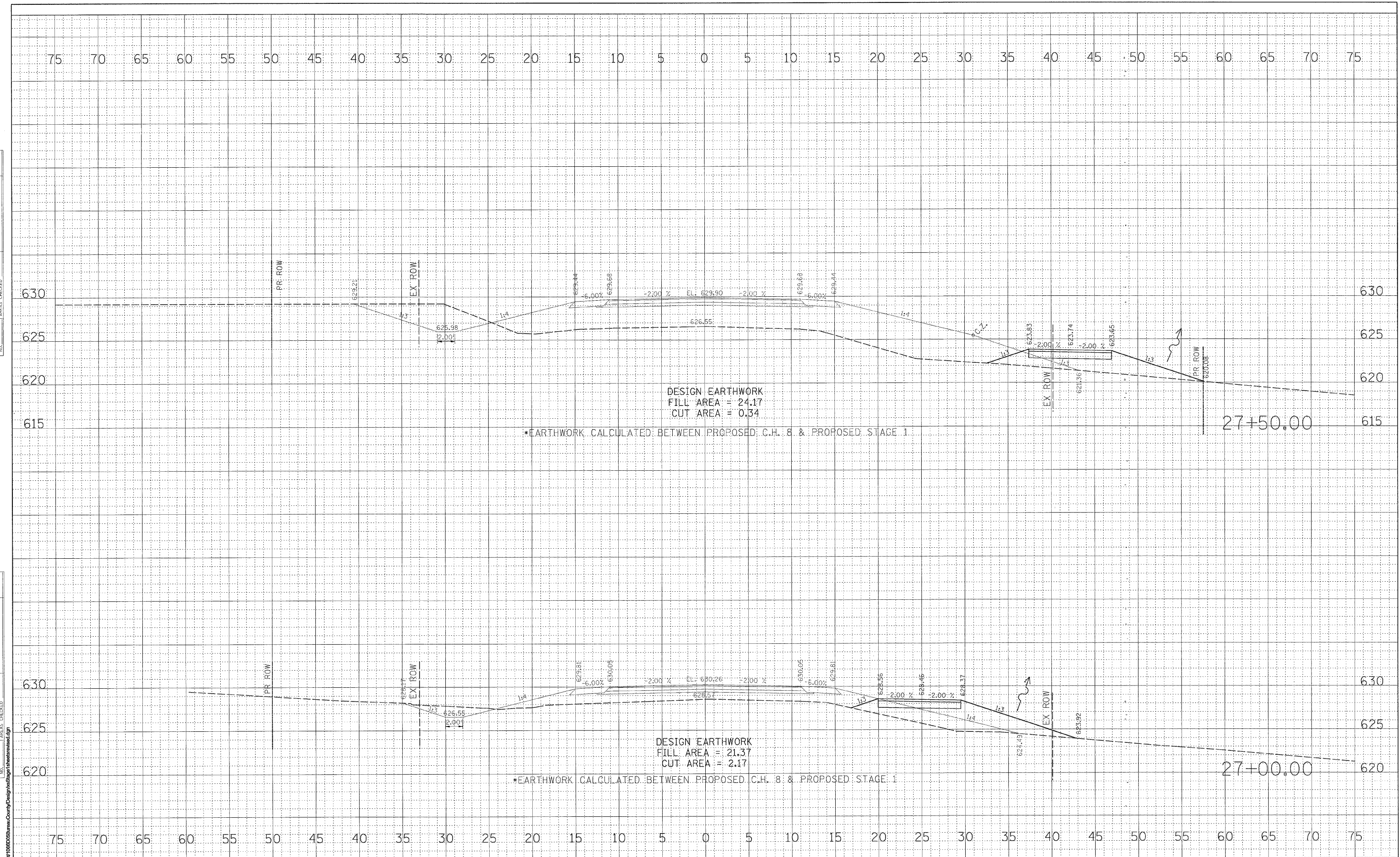


FINAL SURVEY NO.	SURVEY PLOTTED	DATE
NOTE BOOK	TEMPLATE	
AREAS	CHECKED	

ORIGINAL SURVEY NO.	SURVEY PLOTTED	DATE
NOTE BOOK	TEMPLATE	
AREAS	CHECKED	



FILE NAME: C:\Bureau\188\Bureau\Bureau\Design\188\Stage1\188Stage1.dwg

**WILLET, HOFMANN & ASSOCIATES, INC.**  
**CONSULTING ENGINEERS**  
 809 East Second Street Dixon, IL 61021  
 Phone 815.284.3381 Fax 815.284.3385  
 Design Firm # 184-0018  
 www.willett-hofmann.com

USER NAME =	DESIGNED -	REVISED -
PLOT SCALE =	DRAWN -	REVISED -
PLOT DATE =	CHECKED -	REVISED -
	DATE -	REVISED -

**BUREAU COUNTY**  
**BRIDGE REPLACEMENT**  
**FAS 188 (C.H. 8) OVER IAIS RAILROAD & THE HENNEPIN CANAL**

**C.H. 8 - STAGE 1 CROSS SECTIONS**

F.A. RTE.	SECTION	COUNTY	TOTAL SHEETS	SHEET NO.
188	05-00195-00-BR	BUREAU	127	44
STA. 27+00.00 TO STA. 27+50.00		CONTRACT NO. 87380		
FED. ROAD DIST. NO. ILLINOIS FED. AID PROJECT BRS-0188(118)				