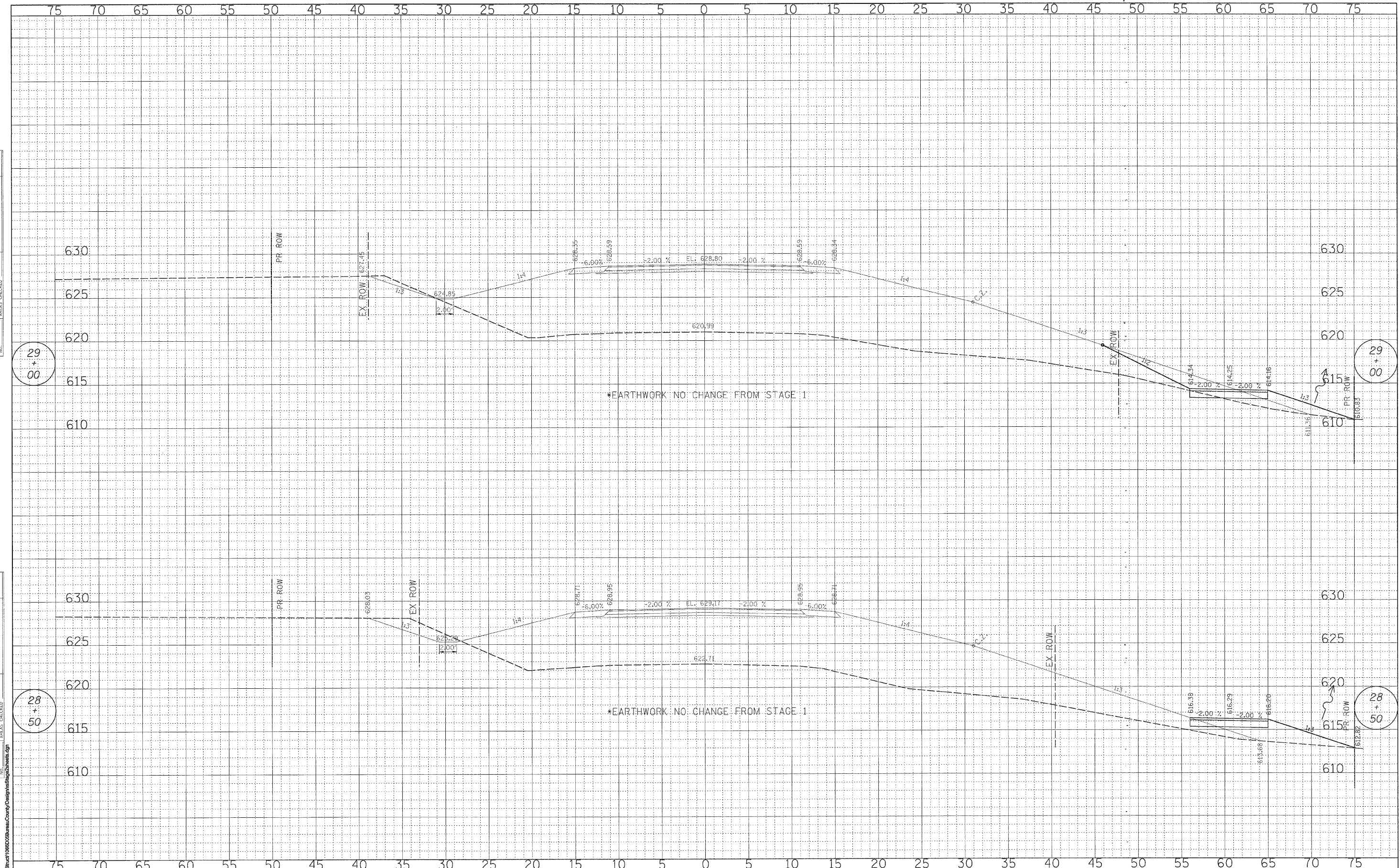


FINAL SURVEY	DATE
SURVEY PLOTTED	BY
NOTE BOOK	
AREAS CHECKED	
NO.	

ORIGINAL SURVEY	DATE
SURVEY PLOTTED	BY
NOTE BOOK	
AREAS CHECKED	
NO.	



FILE NAME: S:\Struct\098209\BureauCountyDesign\Stage2\Sheet2.dgn

WILLETT, HOFMANN & ASSOCIATES, INC.
CONSULTING ENGINEERS
 809 East Second Street Dixon, IL 61021
 Phone 815.294.3381 Fax 815.294.3385
 Design Firm # 184-0018
 www.willettthofmann.com

USER NAME =	DESIGNED -	REVISED -
PLOT SCALE =	DRAWN -	REVISED -
PLOT DATE =	CHECKED -	REVISED -
	DATE -	REVISED -

BUREAU COUNTY
BRIDGE REPLACEMENT
FAS 188 (C.H. 8) OVER IAIS RAILROAD & THE HENNEPIN CANAL

C.H. 8 - STAGE 2 CROSS SECTIONS

F.A. RTE.	SECTION	COUNTY	TOTAL SHEETS	SHEET NO.
188	05-00195-00-BR	BUREAU	127	51
STA. 28+50.00 TO STA. 29+00.00		CONTRACT NO. 87380		
FED. ROAD DIST. NO. 7 ILLINOIS FED. AID PROJECT 695-0188(118)				