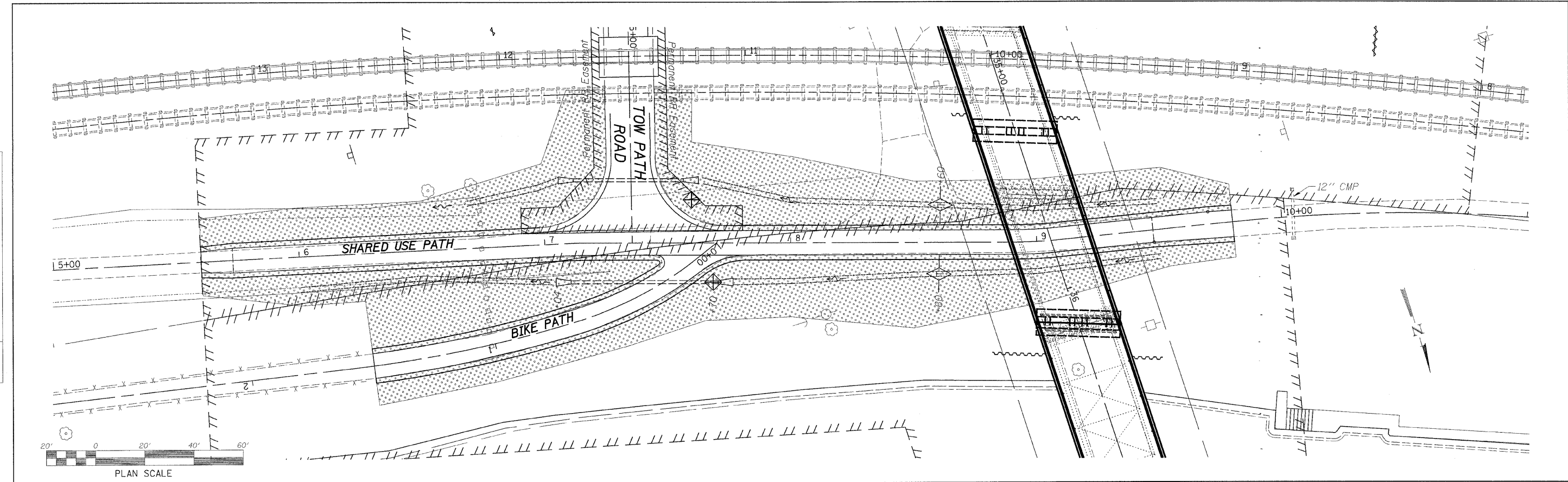


PLAN SURVEYED BY DATE  
 CHECKED BY DATE  
 ALIGNED CHECKED BY DATE  
 RT. OF WAY CHECKED BY DATE  
 NO. ROAD FILE NAME

PROFILE SURVEYED BY DATE  
 CHECKED BY DATE  
 PLAN NOTED BY DATE  
 STRUCTURE NOTING CIRCD



**LEGEND**

	INLET PROTECTION
	PERIMETER EROSION BARRIER
	DRAINAGE FLOW
	TEMPORARY DITCH CHECK
	STONE DUMPED RIPRAP, CLASS A3
	EROSION CONTROL BLANKET OVER SEEDING, CLASS 3 (SPECIAL)

FILE NAME = s:\Struct\1018000\Bureau\County\Design\ppk\kpath.dgn

**WILLETT, HOFMANN & ASSOCIATES, INC.**  
**CONSULTING ENGINEERS**  
 809 East Second Street Dixon, IL 61021  
 Phone 815-294-3361 Fax 815-294-3365  
 Design Firm # 184-00518  
 www.willetthofmann.com

USER NAME =	DESIGNED -	REVISED -
	DRAWN -	REVISED -
PLOT SCALE =	CHECKED -	REVISED -
PLOT DATE =	DATE -	REVISED -

**BUREAU COUNTY**  
**BRIDGE REPLACEMENT**  
**FAS 188 (C.H. 8) OVER IAIS RAILROAD & THE HENNEPIN CANAL**

**SWPPP - SHARED USE PATH**

F.A.S.	SECTION	COUNTY	TOTAL SHEETS	SHEET NO.
188	05-00195-00-BR	BUREAU	127	57
STA. 5+00 TO STA. 11+00			CONTRACT NO. 87380	
FED. ROAD DIST. NO. 7 ILLINOIS FED. AID PROJECT BR3-0188(118)				