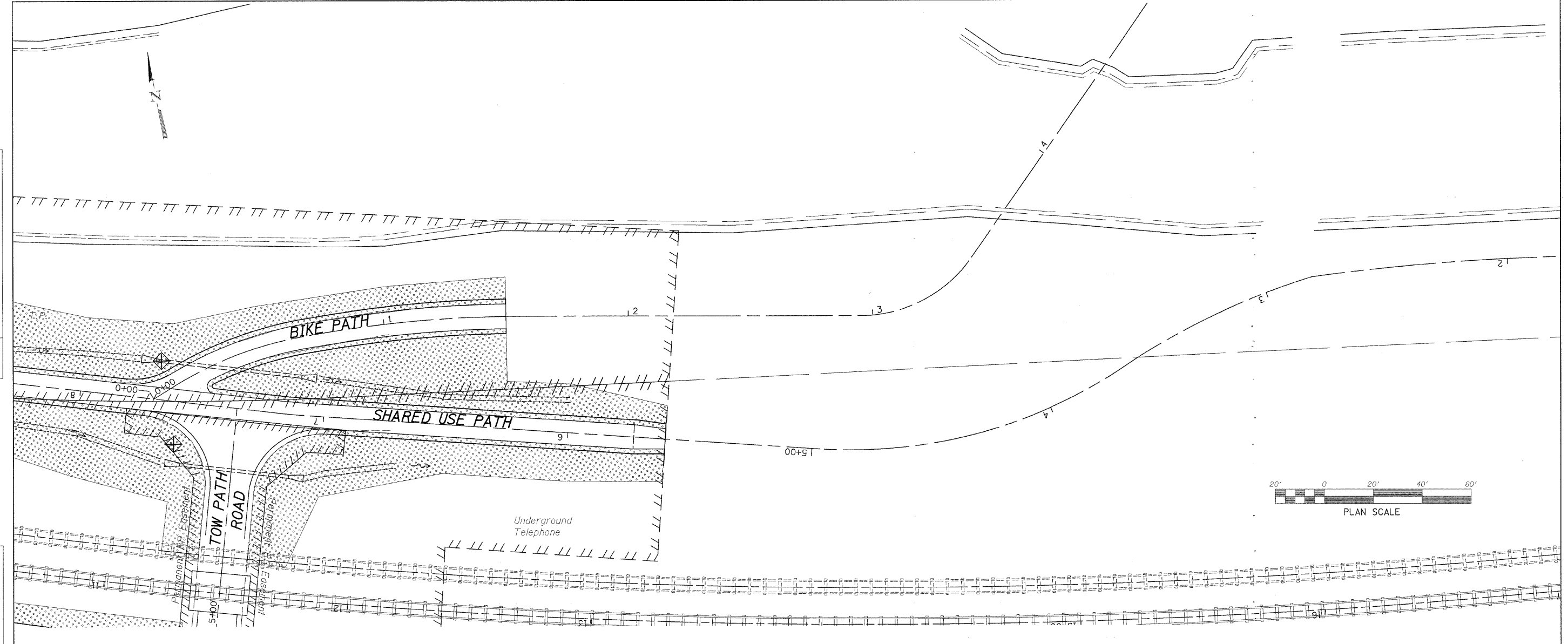


PLAN	SURVEYED	DATE
NOTE BOOK NO.	ALIGNED	
	RT. OF WAY CHECKED	
	PAID FILE NAME	

PROFILE	SURVEYED	DATE
NOTE BOOK NO.	ORIENTED	
	BY	
	NOTED	
	STRUCTURE NOTATIONS CHECKED	



LEGEND	
	INLET PROTECTION
	PERIMETER EROSION BARRIER
	DRAINAGE FLOW
	TEMPORARY DITCH CHECK
	STONE DUMPED RIPRAP, CLASS A3
	EROSION CONTROL BLANKET OVER SEEDING, CLASS 3 (SPECIAL)

FILE NAME : s:\Sharon 1086205\Bureau\County\Design\swppp\SHARED\BPP\1110.dgn

**WILLET, HOFMANN & ASSOCIATES, INC.**  
**CONSULTING ENGINEERS**  
 808 East Second Street Dixon, IL 61021  
 Phone 815.284.3381 Fax 815.294.3385  
 Design Firm # 184-00918  
 www.willett-hofmann.com

USER NAME =	DESIGNED -	REVISED -
	DRAWN -	REVISED -
PLOT SCALE =	CHECKED -	REVISED -
PLOT DATE =	DATE -	REVISED -

**BUREAU COUNTY**  
**BRIDGE REPLACEMENT**  
**FAS 188 (C.H. 8) OVER IAIS RAILROAD & THE HENNEPIN CANAL**

**SWPPP - BIKE PATH**

F.A.S.	SECTION	COUNTY	TOTAL SHEETS	SHEET NO.
188	05-00195-00-BR	BUREAU	127	58
STA. 0+00 TO STA. 5+75			CONTRACT NO. 01380	
FED. ROAD DIST. NO. 7 ILLINOIS FED. AID PROJECT BRS-0186(118)				