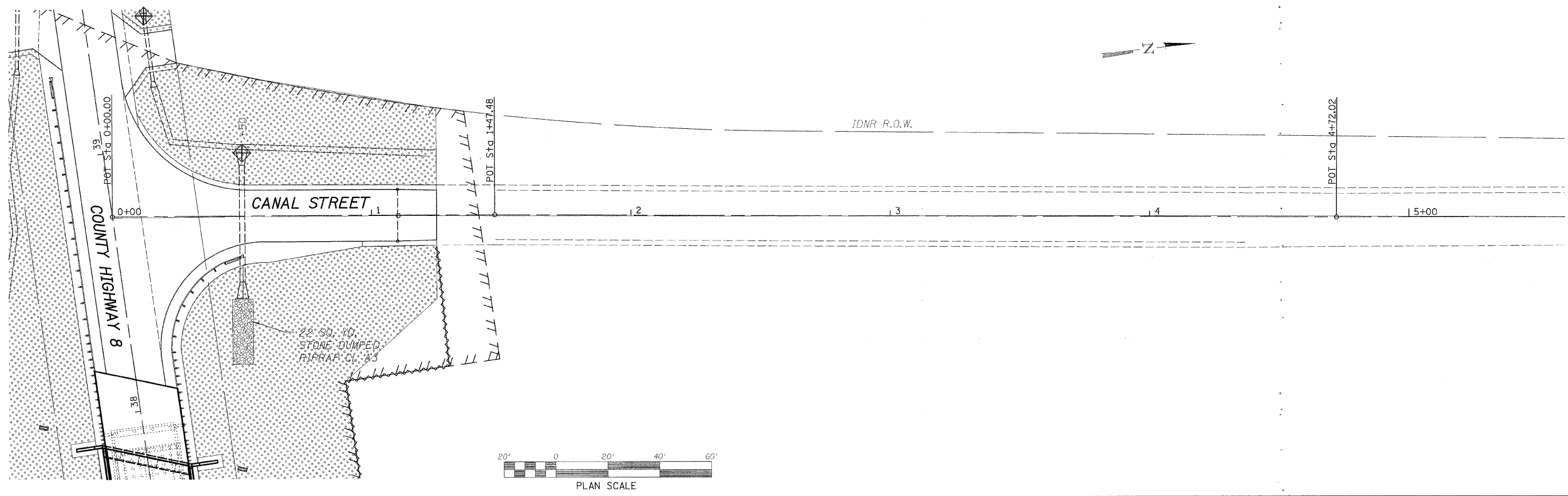


PLAN	SURVEYED	BY	DATE
NOTE BOOK NO.	ALIGNED CHECKED		
	RT. OF WAY CHECKED		
	PROP. FILE MARK		

PROFILE	SURVEYED	BY	DATE
NOTE BOOK NO.	CHECKED		
	B.M. NOTED		
	STRUCTURE NOTATIONS CHECKED		

FILE NAME = s:\Smart\1088008\Bureau\County\Design\pp\CANAL3.dgn



LEGEND	
	INLET PROTECTION
	PERIMETER EROSION BARRIER
	DRAINAGE FLOW
	TEMPORARY DITCH CHECK
	STONE DUMPED RIPRAP, CLASS A3
	EROSION CONTROL BLANKET OVER SEEDING, CLASS 3 (SPECIAL)

**WILLET, HOFMANN & ASSOCIATES, INC.**  
**CONSULTING ENGINEERS**  
 809 East Second Street, Dixon, IL 61021  
 Phone 815.284.3381 Fax 815.294.3385  
 Design Firm 184-00918  
 www.willett-hofmann.com

USER NAME =	DESIGNED -	REVISED -
PLOT SCALE =	DRAWN -	REVISED -
PLOT DATE =	CHECKED -	REVISED -
	DATE -	REVISED -

**BUREAU COUNTY**  
**BRIDGE REPLACEMENT**  
**FAS 188 (C.H. 8) OVER IAIS RAILROAD & THE HENNEPIN CANAL**

**SWPPP - CANAL STREET**

F.A.S.	SECTION	COUNTY	TOTAL SHEETS	SHEET NO.
188	05-00195-00-BR	BUREAU	127	59
STA. 0+00 TO STA. 5+75		CONTRACT NO. 07380		
FED. ROAD DIST. NO. 7 ILLINOIS FED. AID PROJECT BRS-0188(118)				