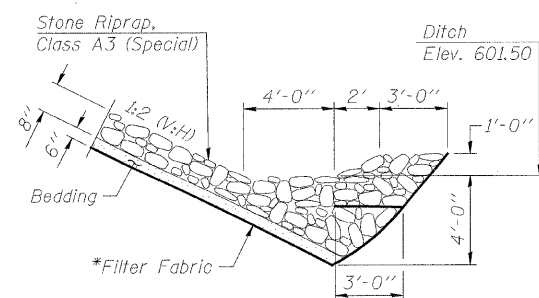
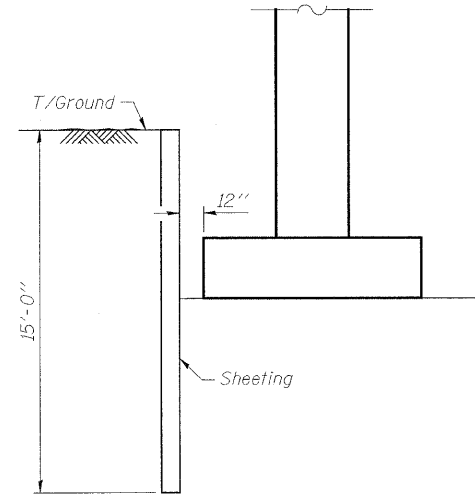
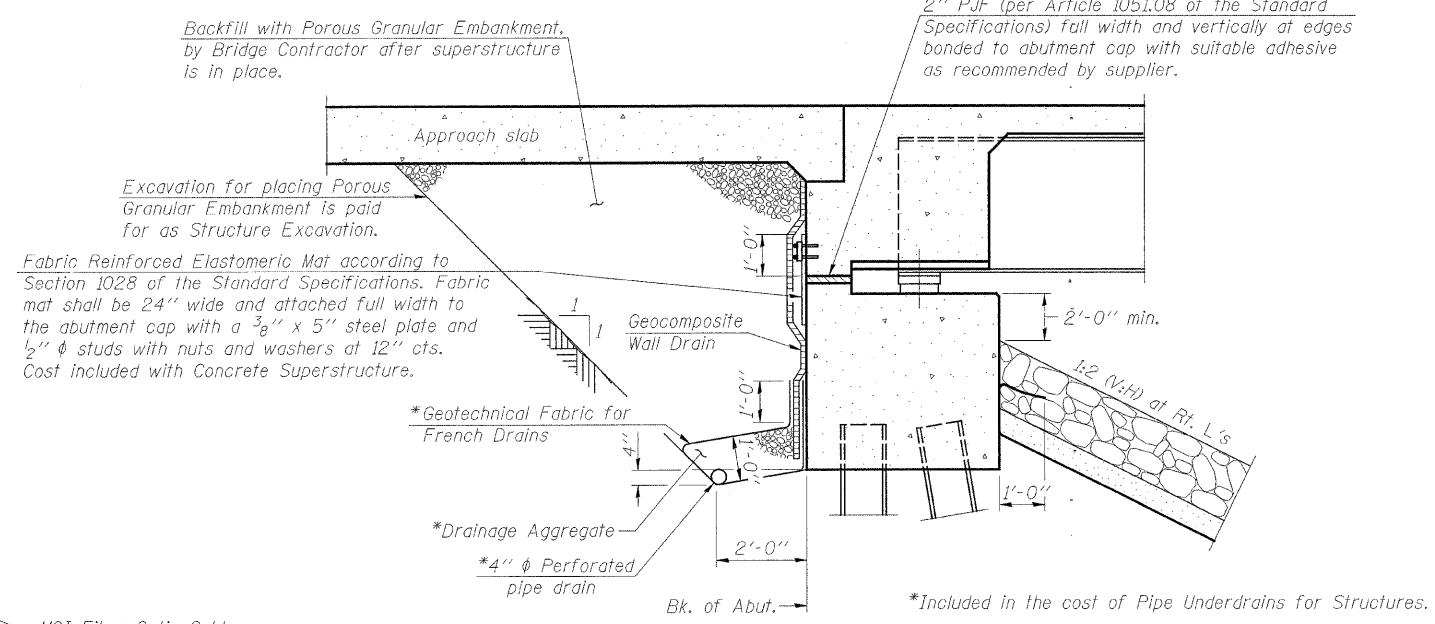
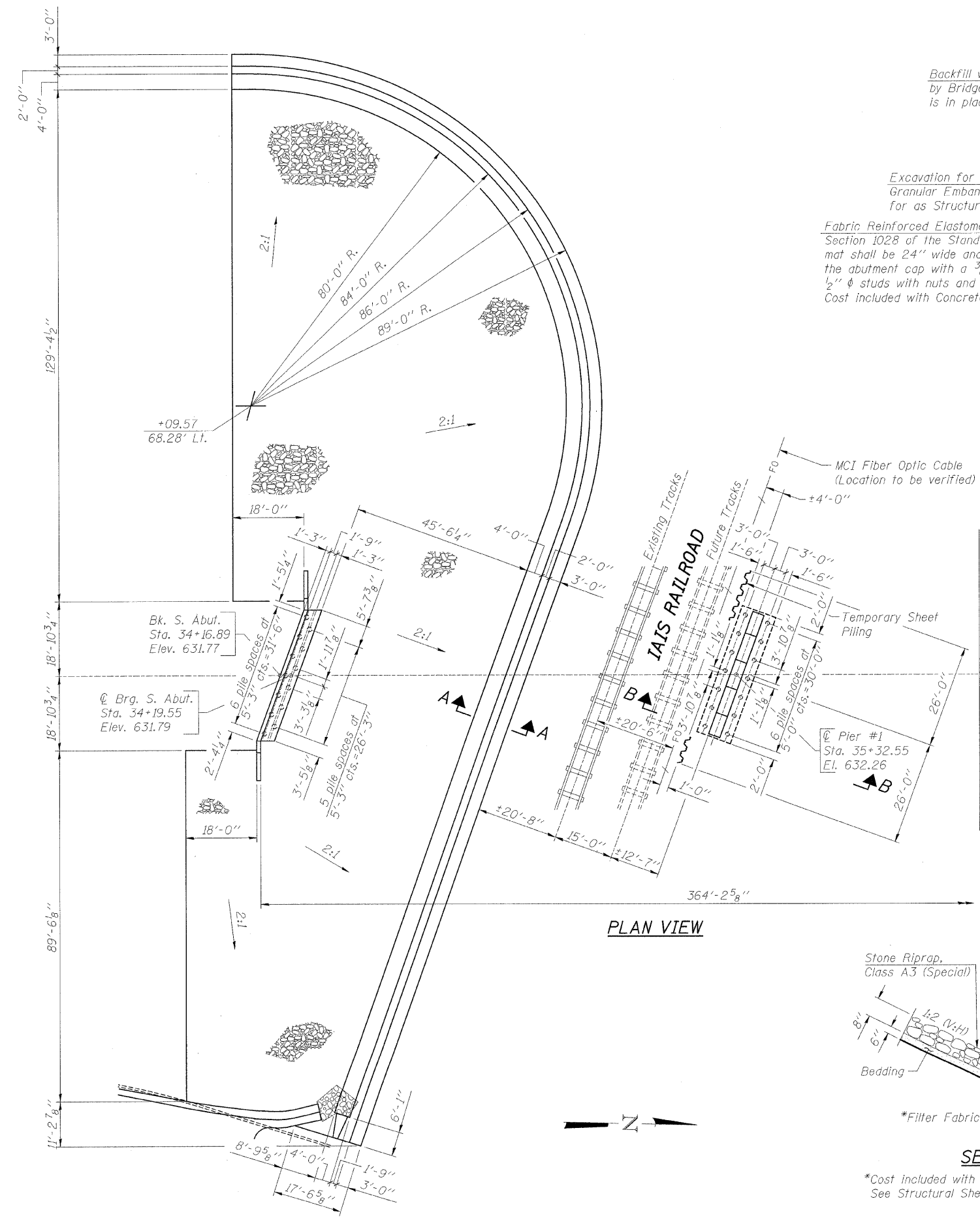


FILE NAME = s:\services\1066008\bur-man\counts\Drawings\1066008\ripap&piling\layout.dgn



*Cost included with Stone Riprap, Class A3 (Special)
See Structural Sheet 4B of 33B for Bill of Material.

BILL OF MATERIAL

Item	Unit	Quantity
Temporary Sheet Piling	Sq. Ft.	780

NOTE:
Sheeting shall have a minimum section modulus of 18.1 in.³/ft. of wall & shall be A328 Grade Steel or better.

RIPRAP AND PILE LAYOUT
SOUTH ABUTMENT AND PIER #1
C.H. 8 OVER IOWA INTERSTATE RAILROAD
& THE HENNEPIN CANAL
STATION 36+00
S.N. 006-3247
WHA #1066D05

STRUCTURAL SHEET NO. 3B OF 33B SHEETS	F.A.S. RTE.	SECTION	COUNTY	TOTAL SHEETS	SHEET NO.
	188	05-00195-00-BR	BUREAU	127	69
	CONTRACT NO. 87380				
FED. ROAD DIST. NO. 7 ILLINOIS FED. AID PROJECT BRS-0188(118)					