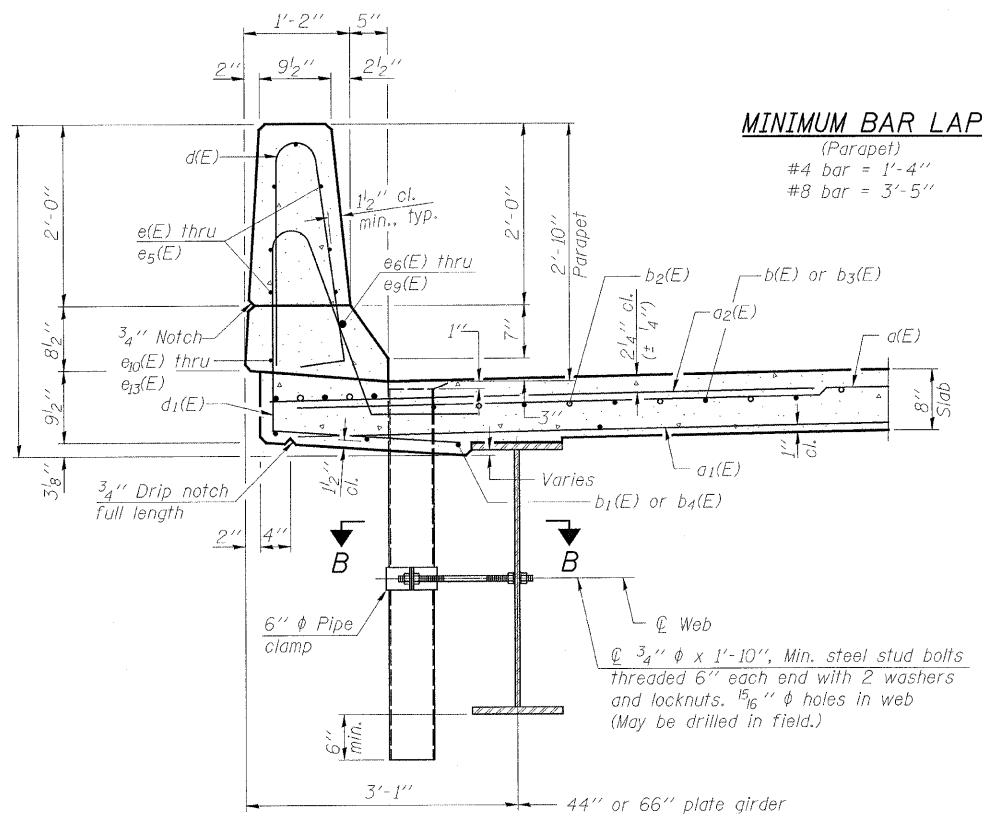
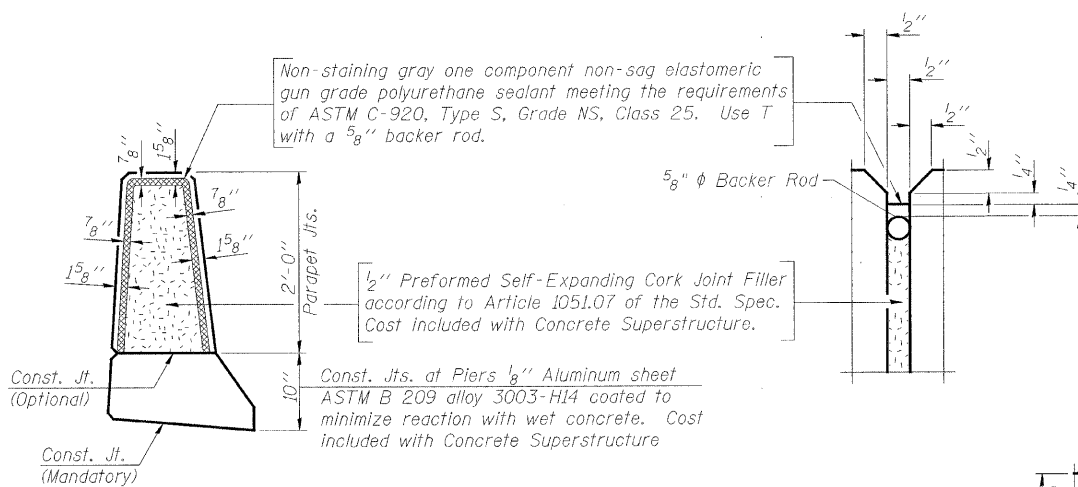


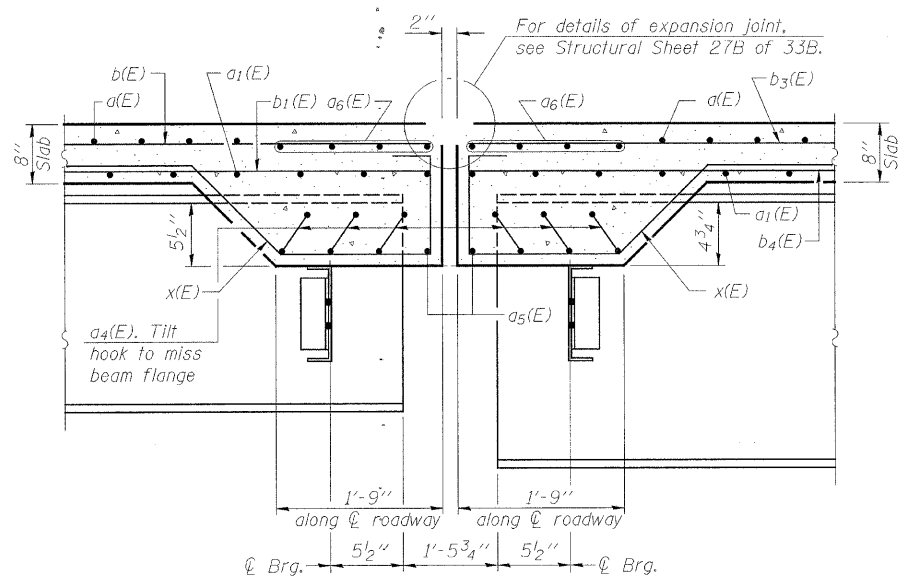
INSIDE ELEVATION OF PARAPET



SECTION THRU PARAPET

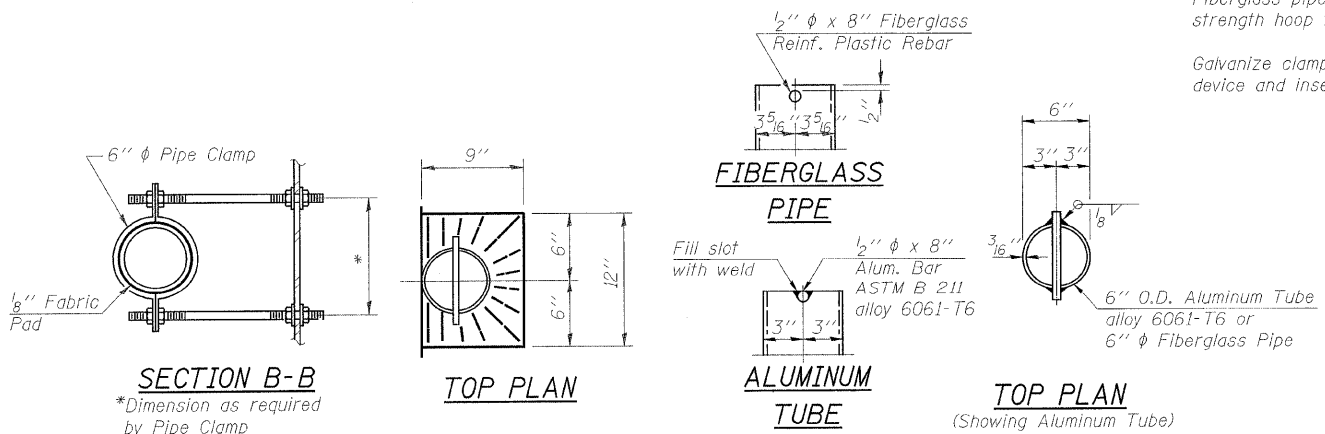


PARAPET JOINT DETAILS



SECTION B-B

NOTES:
 Drains shall be located clear of all diaphragms.
 The exterior surfaces of the floor drains shall be painted with the finish coat as specified in the special provisions for Cleaning and Painting New Metal Structures. The exterior surfaces of the drains shall be cleaned according to the Society of Protective Coatings' Spec. SSPC-SP1 prior to painting.
 Fiberglass pipe shall conform to ASTM D 2996, with short-time rupture strength hoop tensile stress of 30,000 p.s.i. minimum.
 Galvanize clamping device according to AASHTO M232. Cost of clamping device and inserts is included with Floor Drains.



**SUPERSTRUCTURE DETAILS - SPANS 1 & 2
 C.H. 8 OVER IOWA INTERSTATE RAILROAD
 & THE HENNEPIN CANAL
 STATION 36+00
 S.N. 006-3247
 WHA #1066D05**

STRUCTURAL SHEET NO. 11B OF 33B SHEETS	F.A.S. RTE.	SECTION	COUNTY	TOTAL SHEETS	SHEET NO.
	188	05-00195-00-BR	BUREAU	127	77
	CONTRACT NO. 87380				
FED. ROAD DIST. NO. 7 ILLINOIS FED. AID PROJECT BRS-0188(118)					

FILE NAME = s:\projects\1066D05\Bureau\Drawings\1066D05-Parapet.dgn