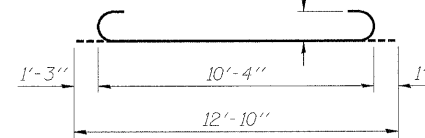
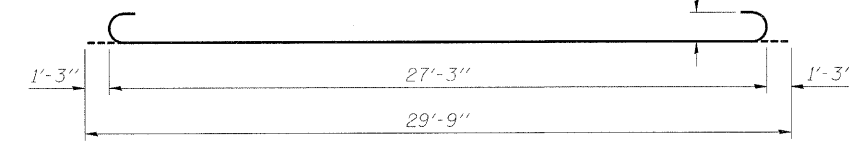


** 10 mil. Polyethylene bond breaker on steel trowel finish

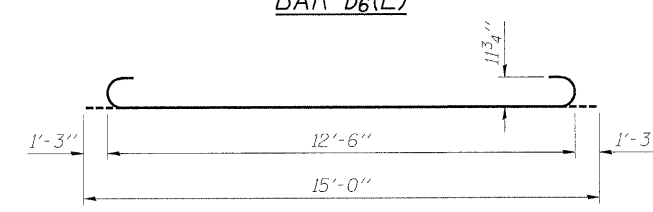
* Tilt #9 b_{6,7}, or b₈ (E) bars as required to maintain clearance.
 ** Cost included with Concrete Superstructure.



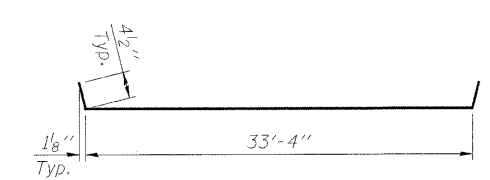
BAR b₈(E)



BAR b₆(E)



BAR b₇(E)



BAR a₇(E)

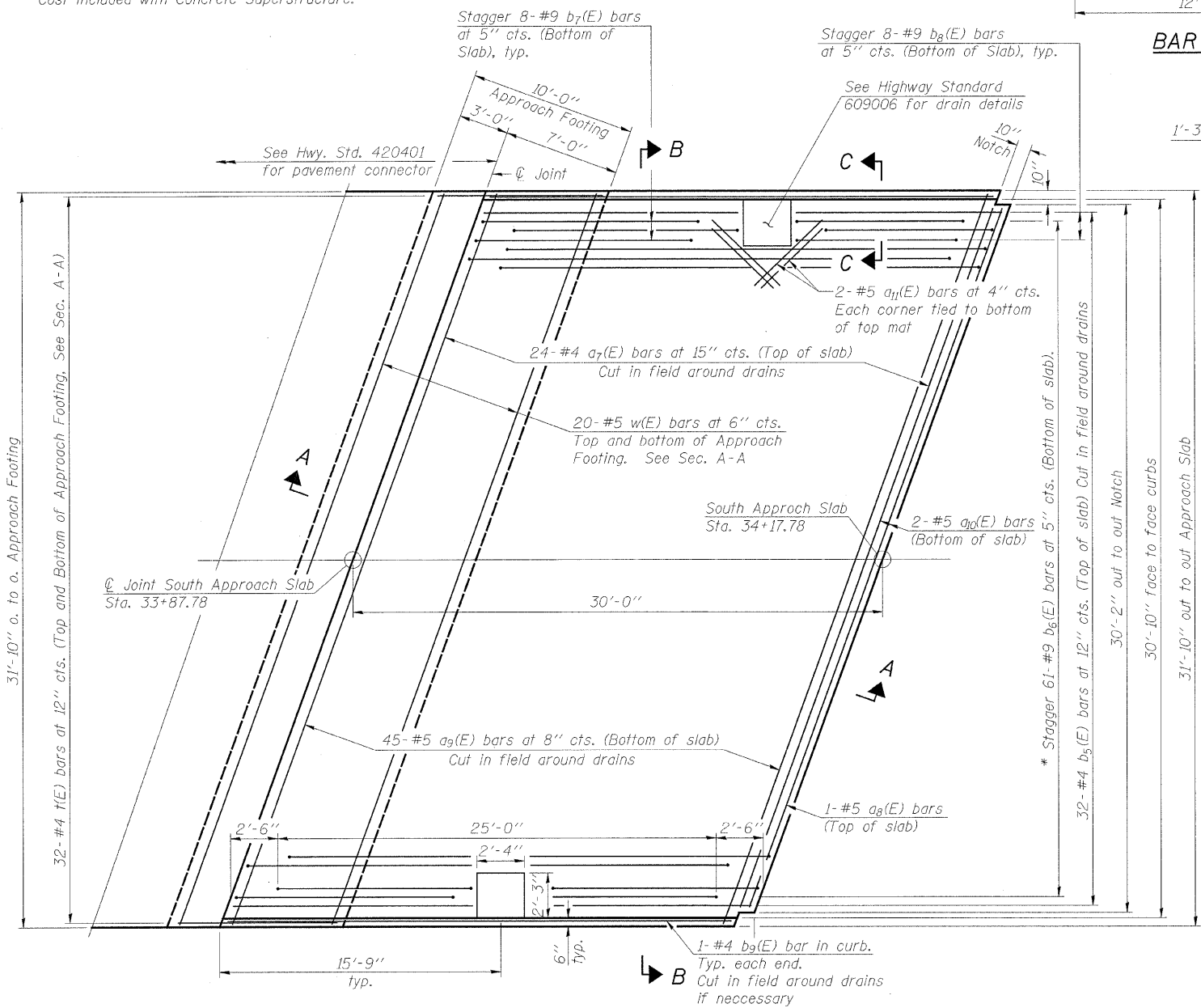
BILL OF MATERIAL

Bar	No.	Size	Length	Shape
a ₇ (E)	24	#4	34'-1"	
a ₉ (E)	1	#5	31'-9"	
a ₉ (E)	45	#5	33'-6"	
a ₁₁ (E)	2	#5	31'-9"	
a ₁₁ (E)	8	#5	3'-0"	
b ₅ (E)	32	#4	29'-8"	
b ₆ (E)	61	#9	29'-9"	
b ₇ (E)	16	#9	15'-0"	
b ₈ (E)	16	#9	12'-10"	
b ₉ (E)	4	#4	28'-9"	
t(E)	64	#4	9'-8"	
w(E)	40	#5	32'-6"	
Concrete Structures		Cu. Yd.	10.5	
Concrete Superstructure		Cu. Yd.	45.3	
Bridge Deck Grooving		Sq. Yd.	93	
Protective Coat		Sq. Yd.	106	
Reinforcement Bars, Epoxy Coated		Pound	12,410	
End Sections 12"		Each	2	
Pipe Drains 12"		Foot	16	
Type B Inlet Box, Standard 609006		Each	2	

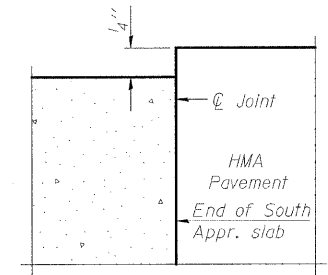
NOTES:

a₇(E), a₉(E), and w(E) bar spacings measured along ϕ Rdwy.
 Approach slab concrete shall be paid for as Concrete Superstructure.
 Approach footing concrete shall be paid for as Concrete Structures.
 Reinforcement shall be paid for as Reinforcement Bars, Epoxy Coated.
 Cost of excavation for approach footing included with Concrete Structures.
 The approach footing maximum applied service bearing pressure (Q_{max}) = 2.0 ksf.
 For v(E) bar details, see Structural Sheet 12B of 33B.
 For bar splicer details, see Structural Sheet 29B of 33B.
 For Porous Granular Embankment and drainage treatment details, see Structural Sheet 3B of 33B.

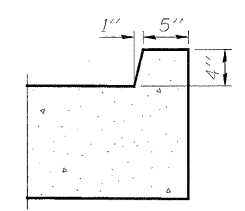
**SOUTH BRIDGE APPROACH SLAB DETAILS
 C.H. 8 OVER IOWA INTERSTATE RAILROAD
 & THE HENNEPIN CANAL
 STATION 36+00
 S.N. 006-3247
 WHA #1066D05**



PLAN



**FLEXIBLE PAVEMENT
 DETAIL A**



**SECTION C-C
 (Exit ends only)**

STRUCTURAL SHEET NO. 15B OF 33B SHEETS	F.A.S. RTE.	SECTION	COUNTY	TOTAL SHEETS	SHEET NO.
	188	05-00195-00-BR	BUREAU	127	81
	CONTRACT NO. 87380				
FED. ROAD DIST. NO. 7 ILLINOIS FED. AID PROJECT BRS-0188(118)					

FILE NAME = s:\Struct\1066D05\Bureau\County Drawings\1066Approach.dgn