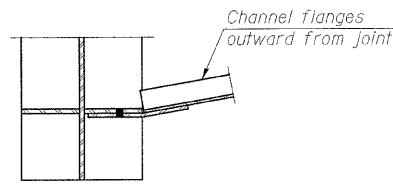
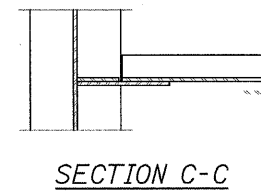


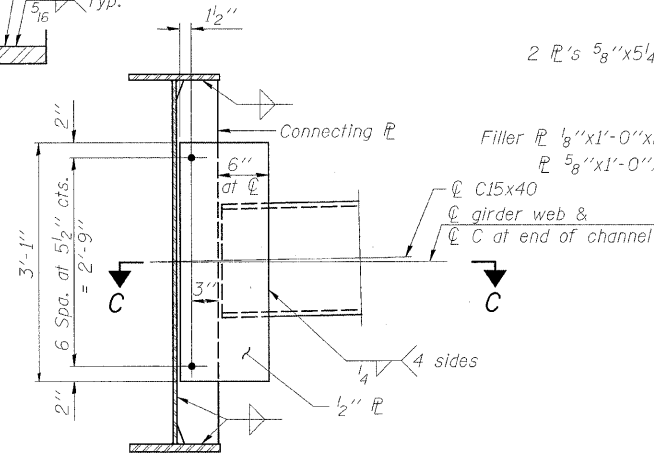
END CROSS FRAME (C) - N. Q BRG. PIER #2
*Weld on near side of 1/2" PL.



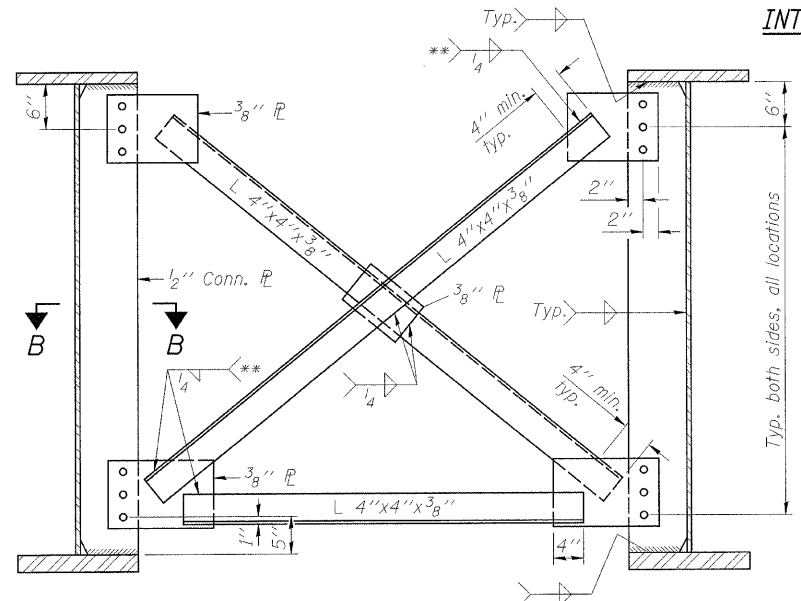
SECTION A-A



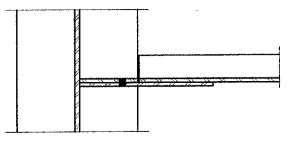
SECTION C-C



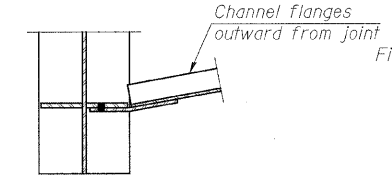
INTERIOR DIAPHRAGM (D) - SPAN 1 & SPAN 2



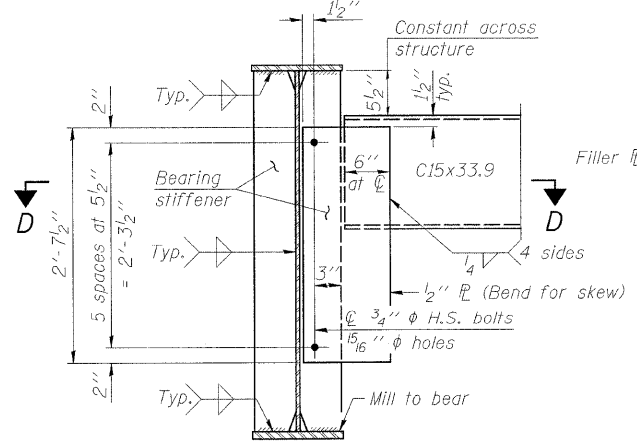
INTERIOR CROSS FRAME (C1) - SPAN 3
**Fillet weld angles along 3 sides on one face of gusset plate.



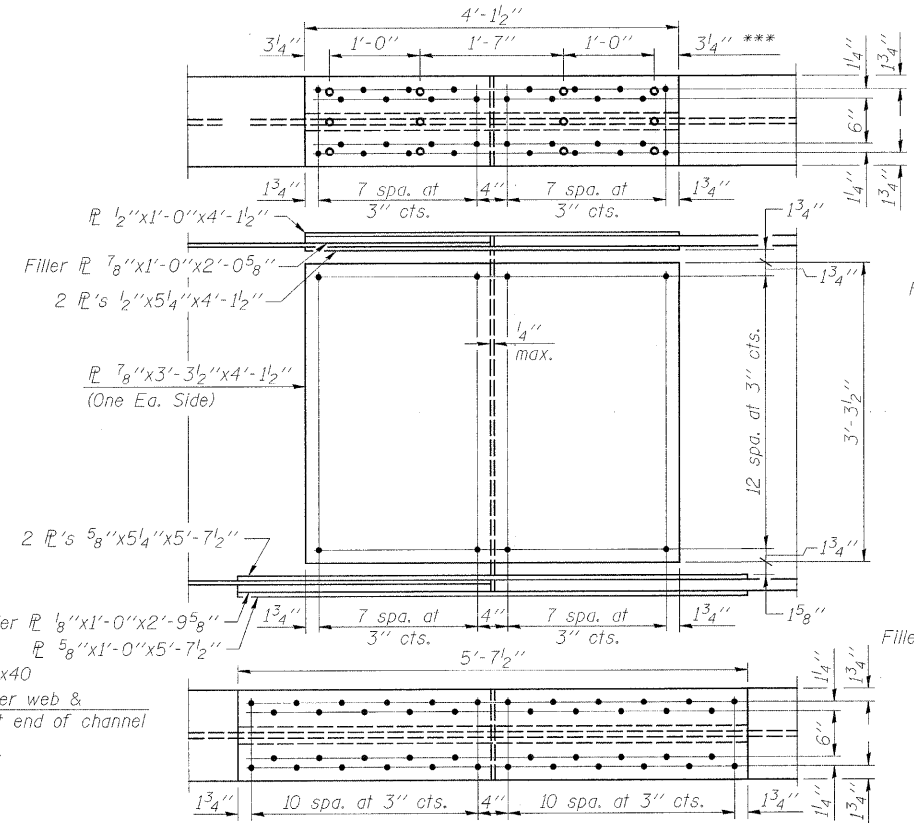
SECTION B-B



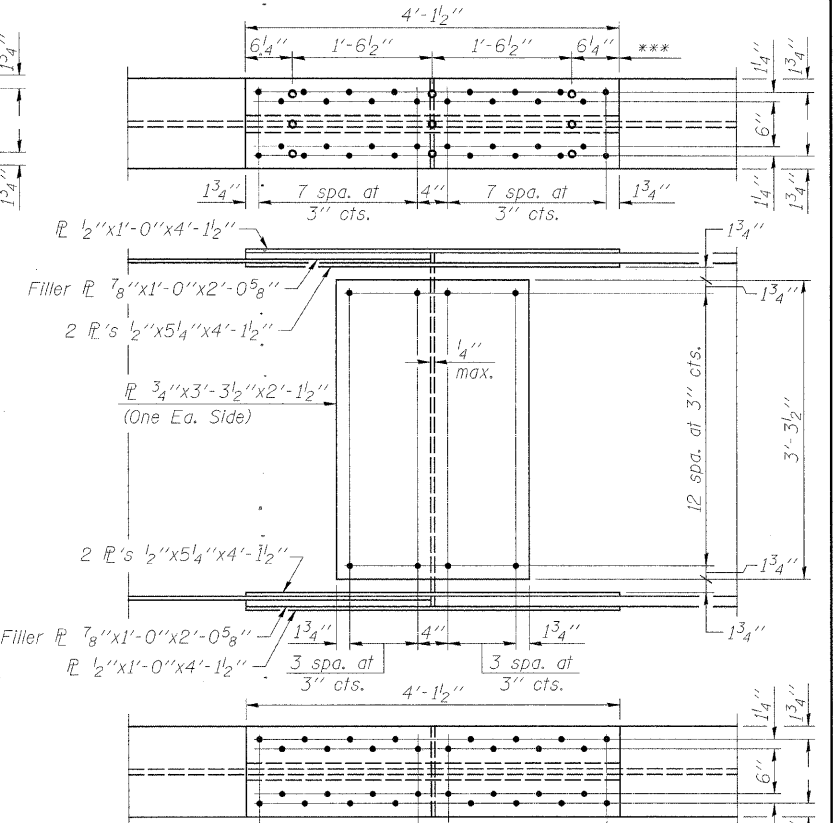
SECTION D-D



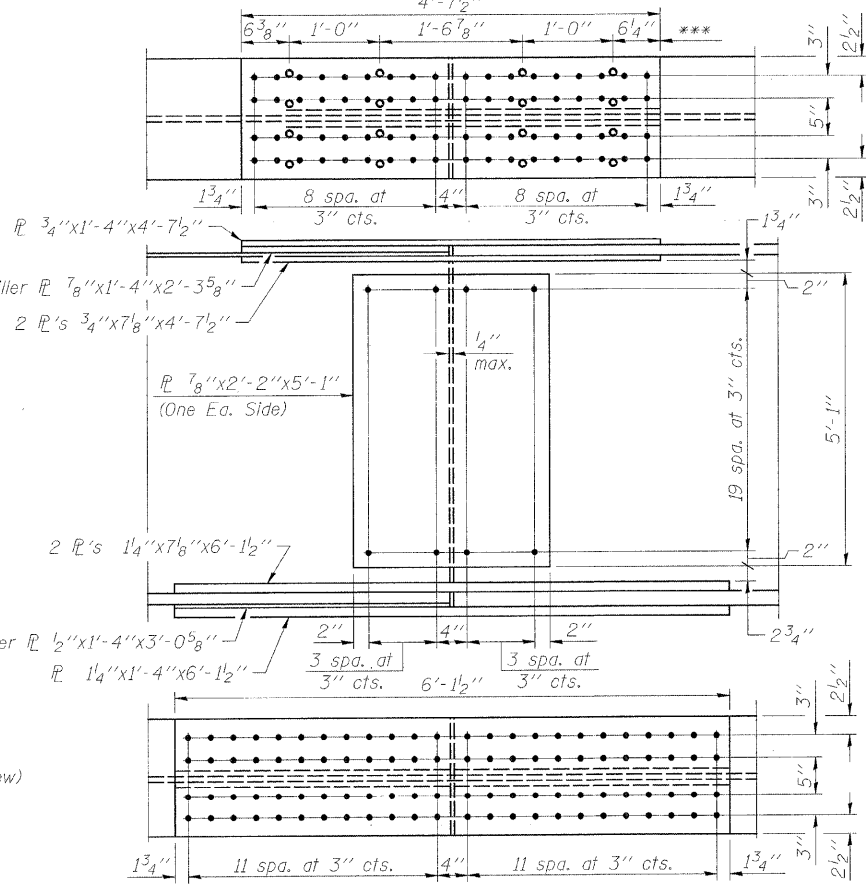
END DIAPHRAGM (D1) - S. Q BRG. PIER #2



FIELD SPLICE #1 DETAIL



FIELD SPLICE #2 DETAIL



FIELD SPLICE #3 & #4
Field Splice #4 mirrored.

***Additional Shear Stud Connectors.

NOTES:

CROSS FRAMES & DIAPHRAGMS:
Bolts shall be 3/4" φ HS bolts, 15/16" φ holes
Two hardened washers required for each set of oversized holes.

FRAMING DETAILS
DIAPHRAGM DETAILS - SOUTH ABUTMENT
C.H. 8 OVER IOWA INTERSTATE RAILROAD
& THE HENNEPIN CANAL
STATION 36+00
S.N. 006-3247
WHA #1066D05

STRUCTURAL SHEET NO. 198 OF 338 SHEETS	F.A.S. RTE.	SECTION	COUNTY	TOTAL SHEETS	SHEET NO.
	188	05-00195-00-BR	BUREAU	127	85
	CONTRACT NO. 87380				
FED. ROAD DIST. NO. 7 ILLINOIS FED. AID PROJECT BRS-0188(118)					

FILE NAME = s:\Struct\1066D05\Drawings\1066D05\Detail.dwg