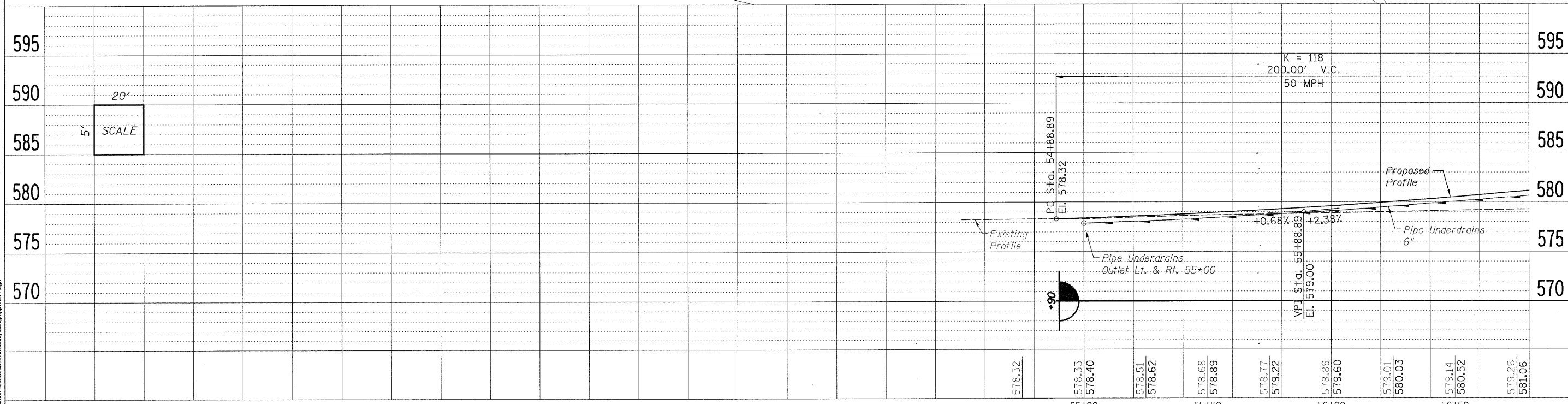
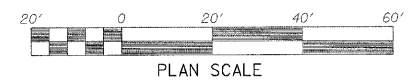
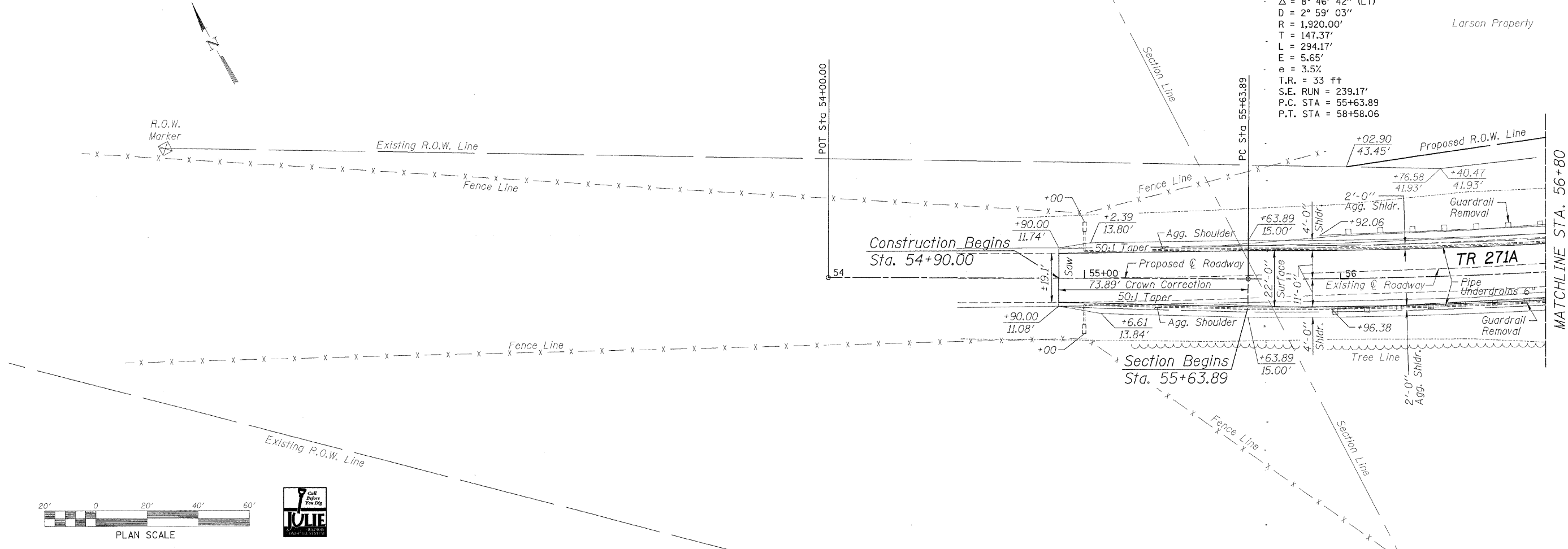


DATE	
BY	
PLANNED	
NOTED	
CHECKED	
NO.	

DATE	
BY	
PROFILING	
NOTED	
CHECKED	
NO.	

PROP. CURVE PR-TR271-1
 PI STA. = 57+11.26
 $\Delta = 8^\circ 46' 42''$ (LT)
 $D = 2^\circ 59' 03''$
 $R = 1,920.00'$
 $T = 147.37'$
 $L = 294.17'$
 $E = 5.65'$
 $e = 3.5\%$
 $T.R. = 33$ ft
 $S.E. RUN = 239.17'$
 $P.C. STA = 55+63.89$
 $P.T. STA = 58+58.06$

Larson Property



FILE NAME = s:\bureau\10850\Bureau\County\Design\tr271.dgn

WILLET, HOFMANN & ASSOCIATES, INC.
 CONSULTING ENGINEERS
 809 East Second Street Dixon, IL 61021
 Phone 815.294.3381 Fax 815.294.3385
 Design Firm # 184-0018
 www.willettthofmann.com

USER NAME =	DESIGNED -	REVISED -
PLOT SCALE =	DRAWN -	REVISED -
PLOT DATE =	CHECKED -	REVISED -
	DATE -	REVISED -

BUREAU COUNTY
 BRIDGE REPLACEMENT
 FAS 188 (C.H. 8) OVER IAIS RAILROAD & THE HENNEPIN CANAL

TR 271A - PLAN & PROFILE

F.A.S.	SECTION	COUNTY	TOTAL SHEET NO.
188	05-00195-00-BR	BUREAU	127 101
STA. 54+00 TO STA. 56+80		CONTRACT NO. 87380	
FED. ROAD DIST. NO. 7 ILLINOIS FED. AID PROJECT BRS-01880181			