

Larson Property

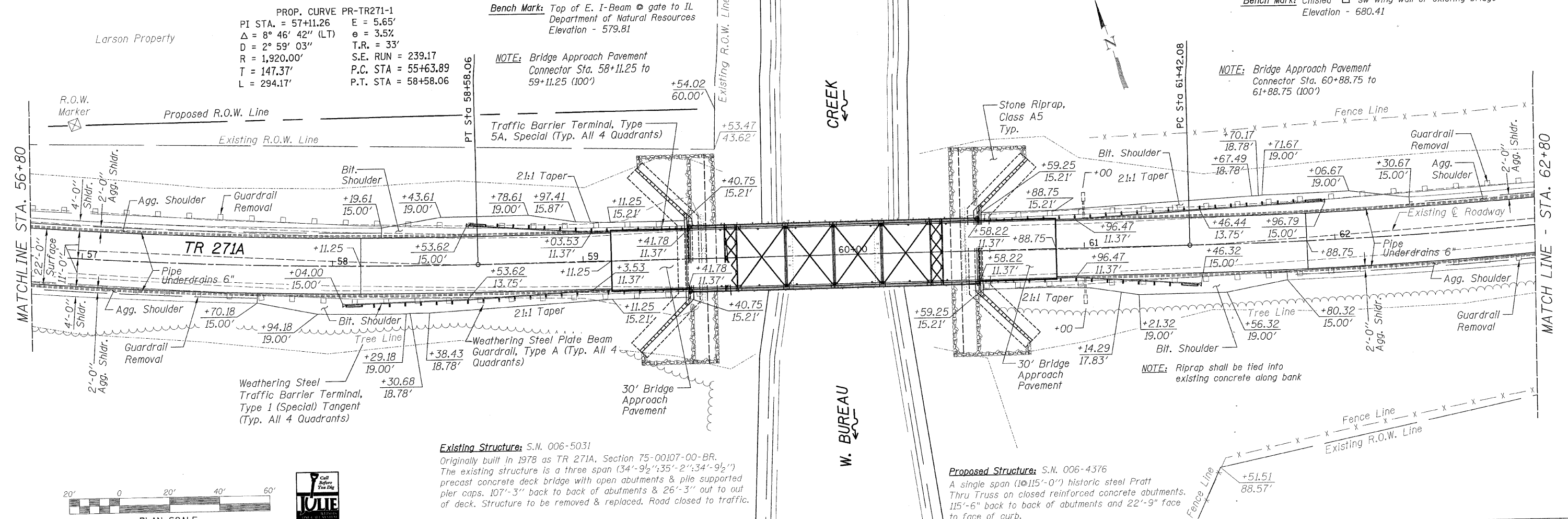
PROP. CURVE PR-TR271-1
 PI STA. = 57+11.26 E = 5.65'
 $\Delta = 8^\circ 46' 42''$ (LT) $e = 3.5\%$
 $D = 2^\circ 59' 03''$ T.R. = 33'
 $R = 1,920.00'$ S.E. RUN = 239.17
 $T = 147.37'$ P.C. STA = 55+63.89
 $L = 294.17'$ P.T. STA = 58+58.06

Bench Mark: Top of E. I-Beam @ gate to IL
 Department of Natural Resources
 Elevation - 579.81

NOTE: Bridge Approach Pavement
 Connector Sta. 58+11.25 to
 59+11.25 (100')

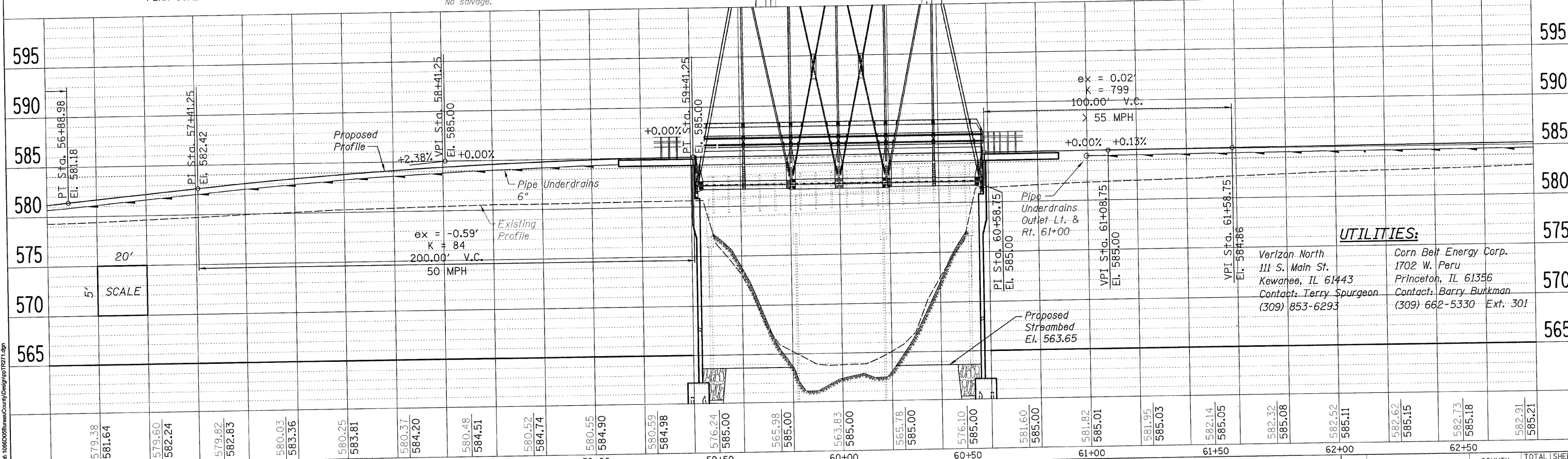
Bench Mark: Chisled "X" sw wing wall of existing bridge
 Elevation - 680.41

NOTE: Bridge Approach Pavement
 Connector Sta. 60+88.75 to
 61+88.75 (100')



Existing Structure: S.N. 006-5031
 Originally built in 1978 as TR 271A, Section 75-00107-00-BR.
 The existing structure is a three span (34'-9 1/2"; 35'-2"; 34'-9 1/2")
 precast concrete deck bridge with open abutments & pile supported
 pier caps. 107'-3" back to back of abutments & 26'-3" out to out
 of deck. Structure to be removed & replaced. Road closed to traffic.
 No salvage.

Proposed Structure: S.N. 006-4376
 A single span (101'-0") historic steel Pratt
 Thru Truss on closed reinforced concrete abutments.
 115'-6" back to back of abutments and 22'-9" face
 to face of curb.



UTILITIES:

Verizon North 111 S. Main St. Kewanee, IL 61443 Contact: Terry Spurgeon (309) 853-6293	Corn Belt Energy Corp. 1702 W. Peru Princeton, IL 61356 Contact: Barry Burkman (309) 662-5330 Ext. 301
--	--

WILLET, HOFMANN & ASSOCIATES, INC.
 CONSULTING ENGINEERS
 809 East Second Street Dixon, IL 61021
 Phone 815.294.3381 Fax 815.294.3386
 Design Firm # 184-00918
 www.willettthofmann.com

USER NAME =	DESIGNED =	REVISED =
PLOT SCALE =	DRAWN =	REVISED =
PLOT DATE =	CHECKED =	REVISED =
	DATE =	REVISED =

BUREAU COUNTY
 BRIDGE REPLACEMENT
 TR 271A - PLAN & PROFILE
 FAS 188 (C.H. 8) OVER IAIS RAILROAD & THE HENNEPIN CANAL

F.A.S.	SECTION	COUNTY	TOTAL SHEETS	SHEET NO.
188	05-00195-00-BR	BUREAU	127	102
STA. 56+80 TO STA. 62+80		CONTRACT NO. 87380		
FED. ROAD DIST. NO. 7 ILLINOIS FED. AID PROJECT		BRS-0188(118)		

FILE NAME = s:\bureau\188\BureauCounty\Design\TR271.dgn

PLAN	SURVEYED	DATE
NOTE BOOK	PLOTTED	
NO.	BY	
	DATE	
	NO.	
	NO.	
	NO.	

PROFILE	SURVEYED	DATE
NOTE BOOK	PLOTTED	
NO.	BY	
	DATE	
	NO.	
	NO.	
	NO.	