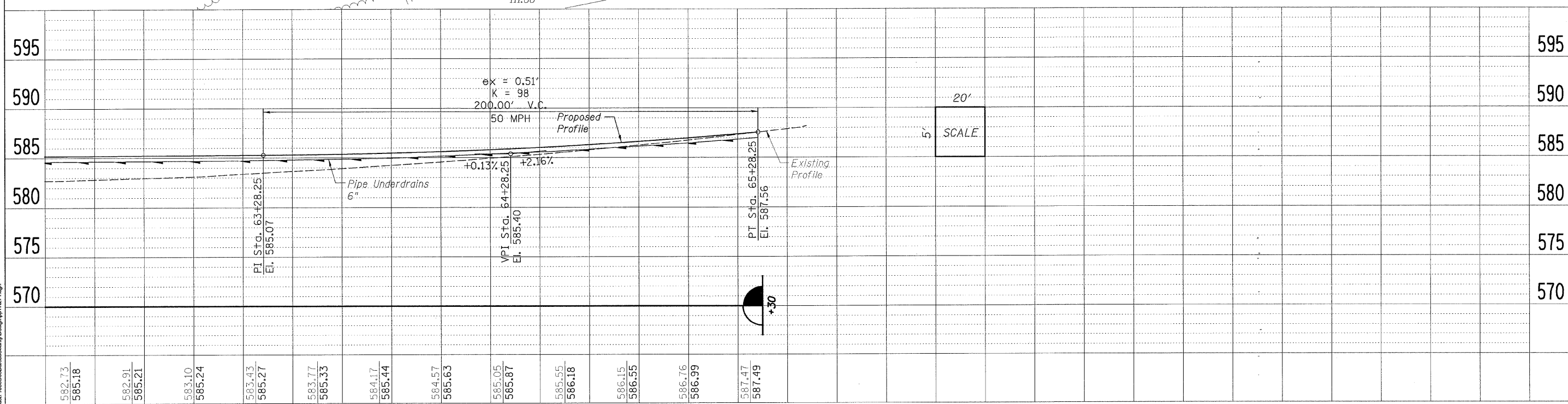
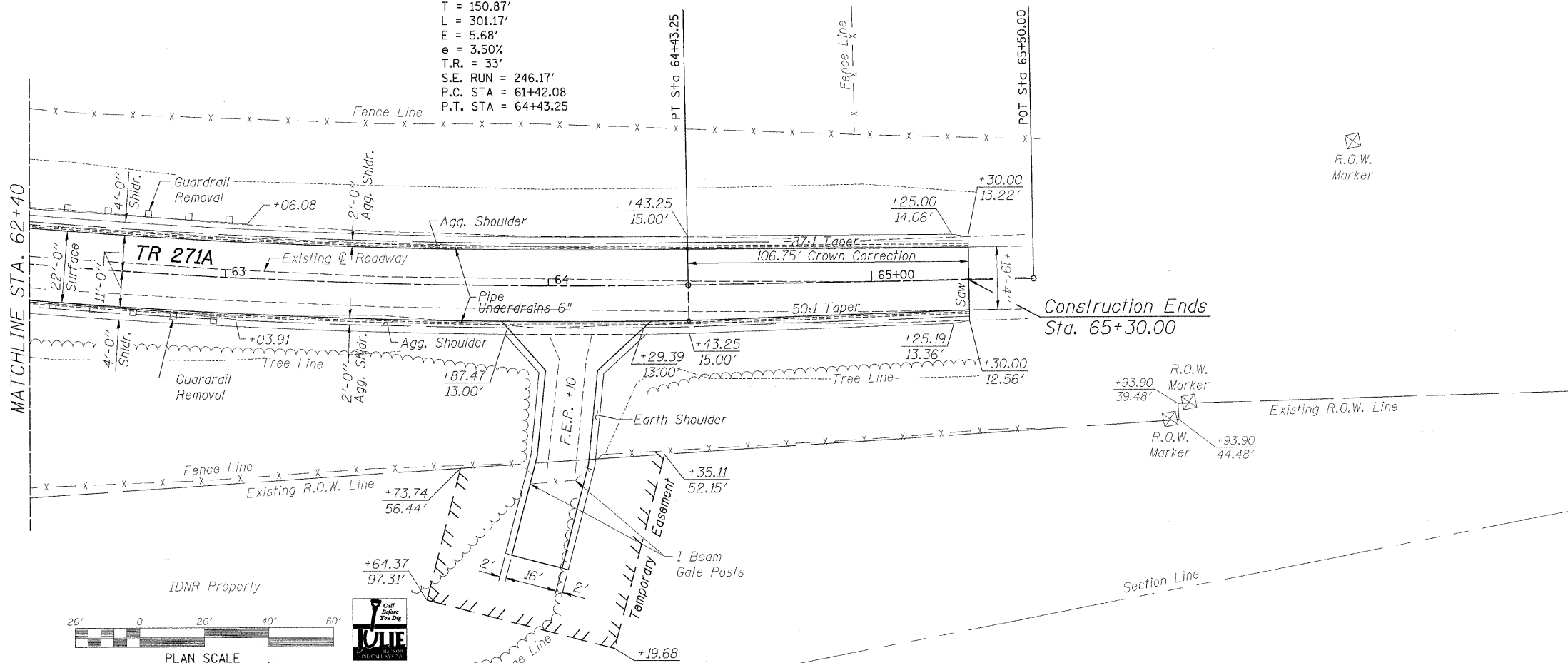


PROP. CURVE PR-TR271-2
 PI STA. = 62+92.95
 $\Delta = 8^\circ 37' 40''$ (LT)
 $D = 2^\circ 51' 53''$
 $R = 2,000.00'$
 $T = 150.87'$
 $L = 301.17'$
 $E = 5.68'$
 $e = 3.50\%$
 $T.R. = 33'$
 $S.E. RUN = 246.17'$
 $P.C. STA = 61+42.08$
 $P.T. STA = 64+43.25$

DATE	
BY	
NO.	
DATE	
BY	
NO.	

DATE	
BY	
NO.	
DATE	
BY	
NO.	



582.73	585.18	582.91	585.21	583.10	585.24	583.43	585.27	583.77	585.33	584.17	585.44	584.57	585.63	585.05	585.87	585.55	586.18	586.15	586.55	586.76	586.99	587.47	587.49
62+50	63+00	63+50	64+00	64+50	65+00																		

WILLET, HOFMANN & ASSOCIATES, INC.
 CONSULTING ENGINEERS
 808 East Second Street, Dixon, IL 61021
 Phone: 815.284.3391 Fax: 815.294.3385
 Design Firm # 184-00918
 www.willettthofmann.com

USER NAME =	DESIGNED =	REVISED =
PLOT SCALE =	DRAWN =	REVISED =
PLOT DATE =	CHECKED =	REVISED =
	DATE =	REVISED =

BUREAU COUNTY
 BRIDGE REPLACEMENT
 FAS 188 (C.H. 8) OVER IAIS RAILROAD & THE HENNEPIN CANAL

TR 271A - PLAN & PROFILE

F.A.S.	SECTION	COUNTY	TOTAL SHEETS	SHEET NO.
188	05-00195-00-BR	BUREAU	127	103
STA. 62+40 TO STA. 65+50			CONTRACT NO. 07380	
FED. ROAD DIST. NO. 7 ILLINOIS FED. AID PROJECT			BRS-0188(119)	