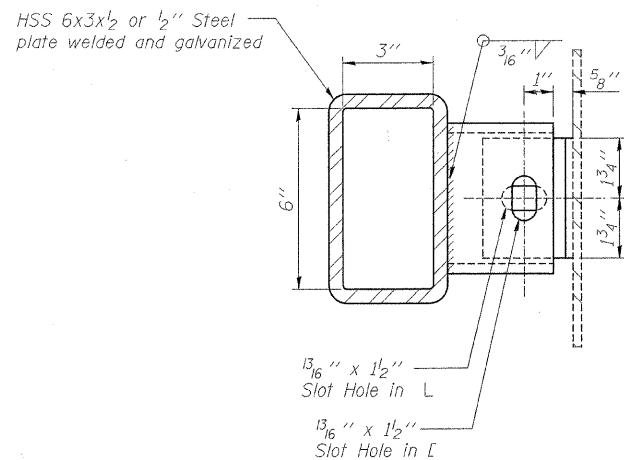
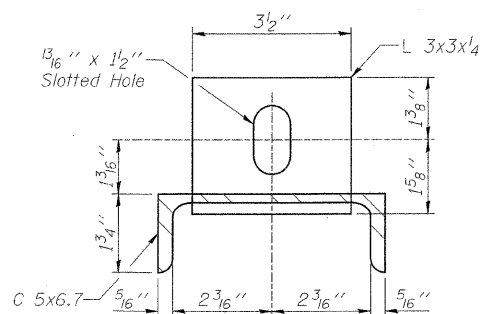


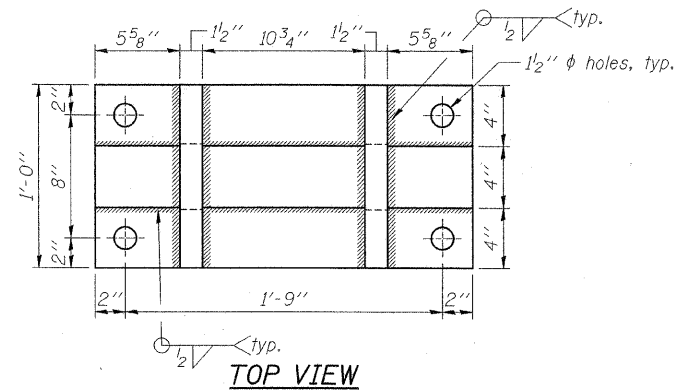
SECTION AT DRAIN



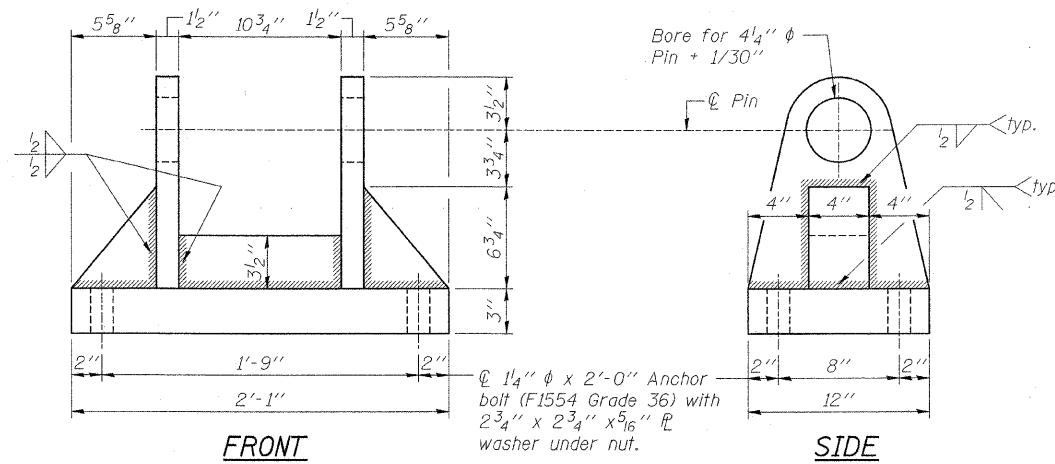
SECTION A-A



SECTION B-B



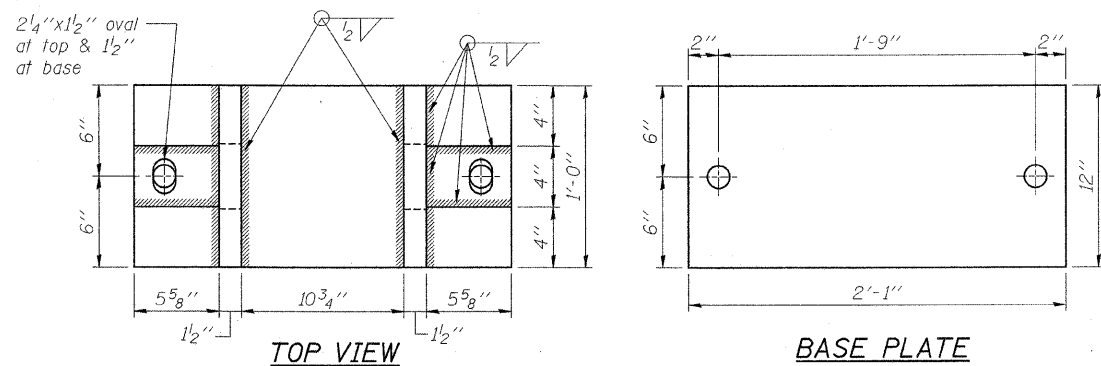
TOP VIEW



FRONT

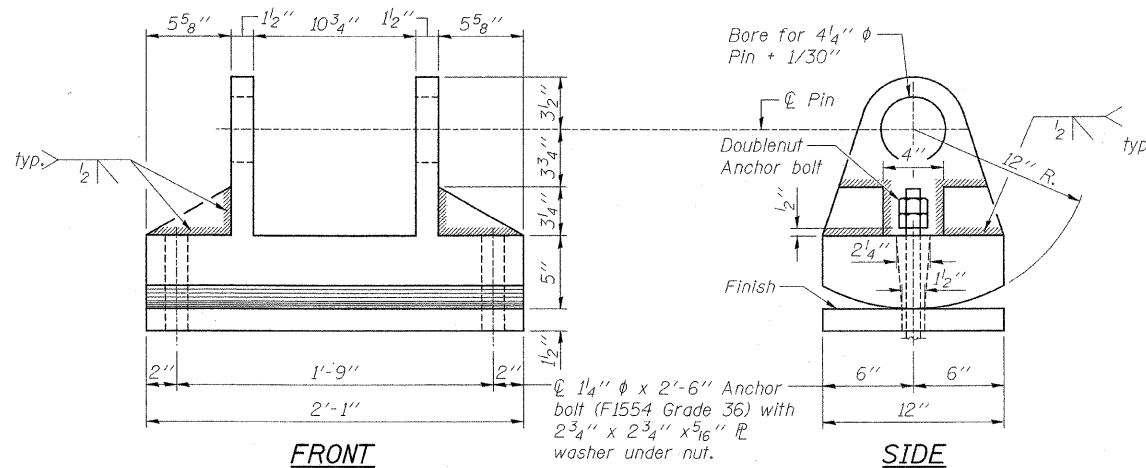
SIDE

FIXED BOLSTER
(Two required)



TOP VIEW

BASE PLATE



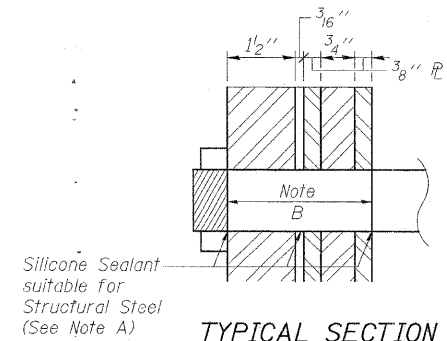
FRONT

SIDE

ROCKER BOLSTER
(Two required)

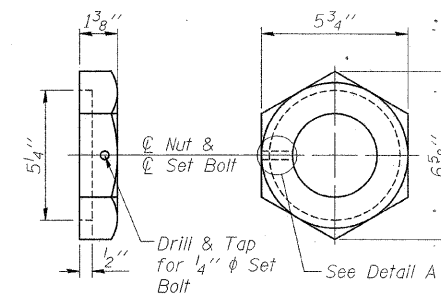
BILL OF MATERIAL

Item	Unit	Total
Floor Drains (Special)	Each	12
Steel Bearing Assembly	Each	4
Anchor Bolts, 1 1/4"	Each	12
Fixed Hinge Pin Assembly	Each	4

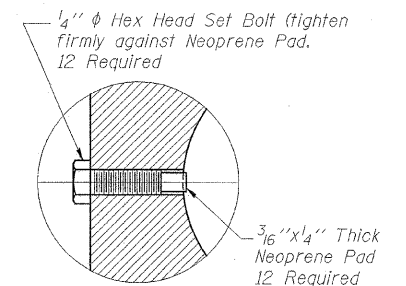


TYPICAL SECTION THRU HINGE PIN ASSEMBLY

- NOTE A:** Apply 3/8" bead to face of pin plates immediately before completion of the remaining arch installation. Place sealant around nuts after installation. Sealant shall be suitable for prolonged exterior exposure without losing flexibility or adhesion to painted steel surfaces. Proposed products shall be subject to department's acceptance based on documented testing or other evidence.
- NOTE B:** Nominal pin diameter shall be as shown on the drawings. pin material shall be sae 8620 in accordance with Article 1006.04 of the Standard Specifications. Threads shall be 6 un class 2a/2b.

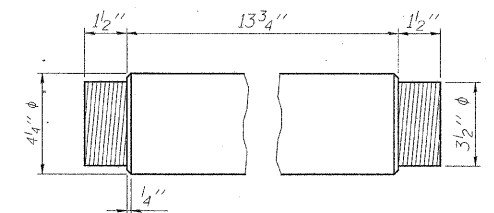


NUT DETAIL
(Recess One Nut Only)



DETAIL A

Set Bolt shall conform to the requirements of ASTM A307 and shall be galvanized according to AASHTO M232.



PIN DETAIL

NOTES:

All steel deck drains, attachments & Bolsters shall be painted in accordance with & included in the cost of "Cleaning & Painting Steel Bridge".

Steel tube (HSS 6 x 3 x 1/2) shall be Hot dipped Galvanized in accordance with AASHTO M 232.

Anchor bolts shall be ASTM F1554 all-thread (or an Engineer-approved alternate material) of the grade(s) and diameter(s) specified.

Anchor bolts may be either cast in place or installed in holes drilled after the supported member is in place.

Drilled and set anchor bolts shall be installed according to Article 521.06 of the Standard Specifications.

BOLSTERS & FLOOR DRAINS
T.R. 271A OVER WEST BUREAU CREEK
STATION 60+00
S.N. 006-4376
WHA #1066D05

STRUCTURAL SHEET NO. 6C OF 13C SHEETS	F.A.S. RTE.	SECTION	COUNTY	TOTAL SHEETS	SHEET NO.
	188	05-00195-00-BR	BUREAU	127	119
			CONTRACT NO. 87380		
			ILLINOIS FED. AID PROJECT BRS-0188(118)		