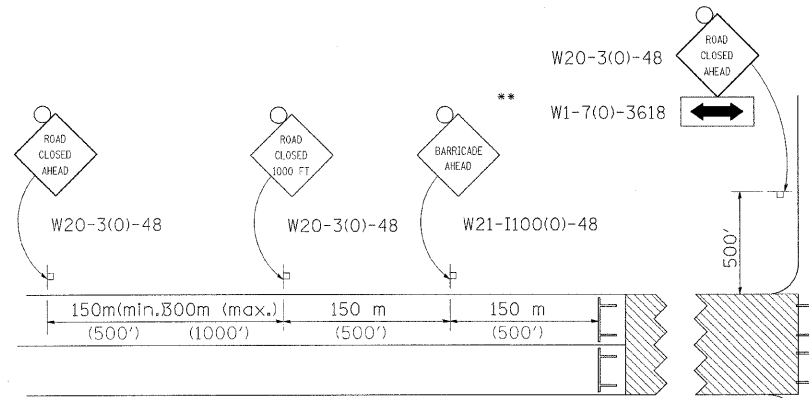


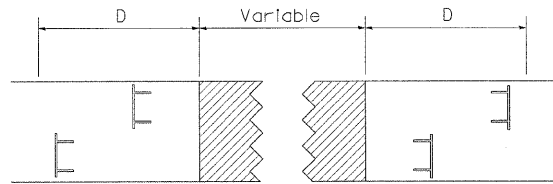
TRAFFIC CONTROL FOR ROAD CLOSURE

| | |
|-----------|--|
| DATE | |
| BY | |
| REVISIONS | |
| NO. | |
| DATE | |
| BY | |
| REVISIONS | |
| NO. | |
| DATE | |
| BY | |
| REVISIONS | |
| NO. | |
| DATE | |
| BY | |
| REVISIONS | |
| NO. | |

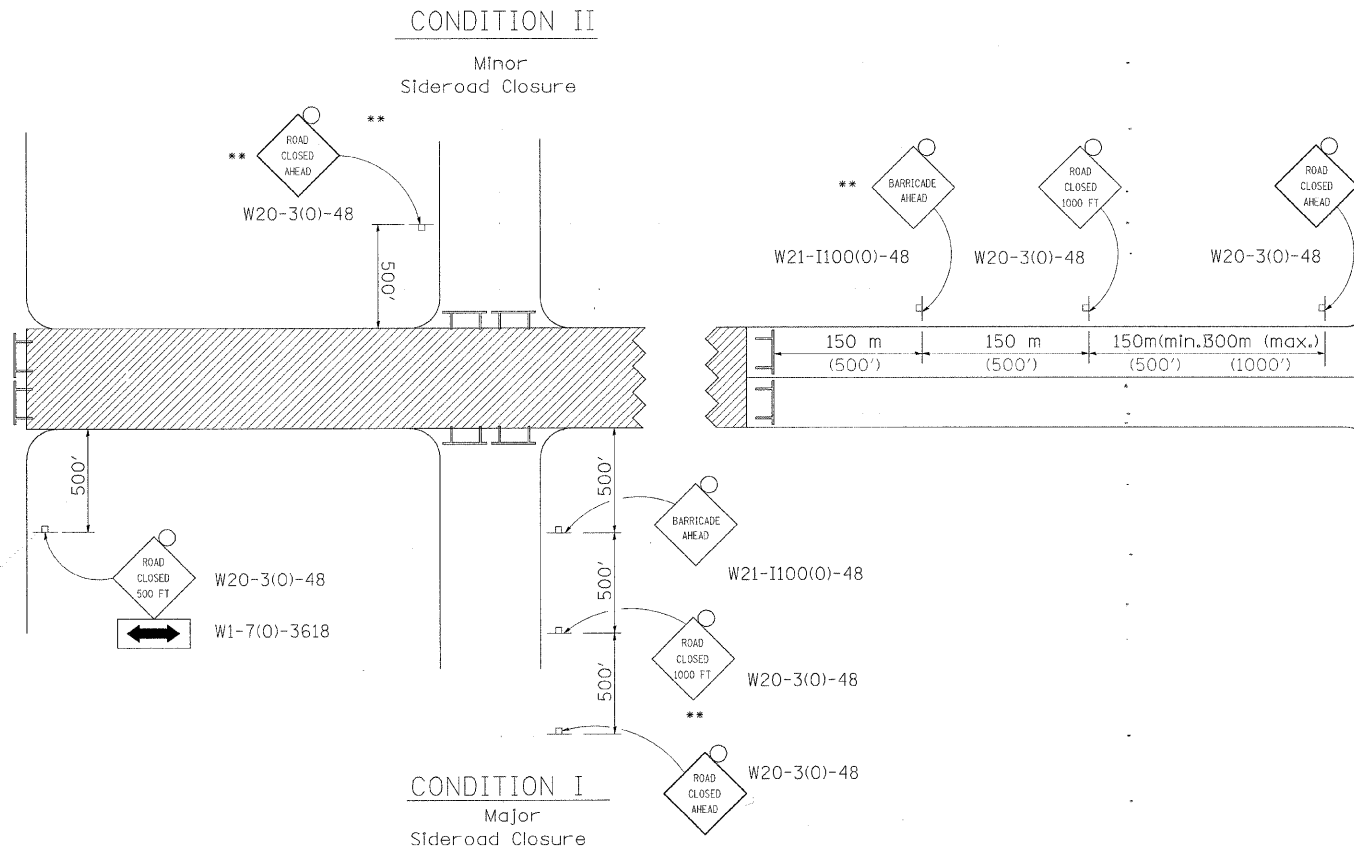
| | |
|-----------|--|
| DATE | |
| BY | |
| REVISIONS | |
| NO. | |
| DATE | |
| BY | |
| REVISIONS | |
| NO. | |
| DATE | |
| BY | |
| REVISIONS | |
| NO. | |



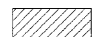


ROAD CLOSED TO THRU TRAFFIC
BARRICADE SET UP



Type III Barricades and R11-4-4830 signs shall be as shown in "Road Closed To All Thru Traffic" detail on Highway Standard 701901. If the distance "D" exceeds 600 m (2000') an additional set of barricades and R11-4-4830 shall be placed at each end of the work area.



SYMBOLS

-  Work area
-  Type III Barricade with Flashers
-  Sign with flashing light

GENERAL NOTES

Longitudinal dimensions may be adjusted to fit field conditions.

When speed limit is less than 45mph, change sign spacing to 250' and change ROAD CLOSED 1000 FT to ROAD CLOSED 500 FT.

Side roads requiring all three signs as shown in CONDITION I (Major Sideroad Closure), shall be listed in the special provision.

- ** Where local access is to be maintained, barricades are to be set up as shown in Road Closed to thru traffic.

Type III Barricades and R11-2-4830 signs shall be as shown in "Road Closed To All Traffic" detail on Highway Standard 701901.

All dimensions are in millimeters (inches) unless otherwise shown.

FILE NAME = S:\STRUCT\1066005BureauCounty\Design\COVER.C.dgn

WILLET, HOFMANN & ASSOCIATES, INC.
CONSULTING ENGINEERS
 809 East Second Street Dixon, IL 61021
 Phone 815.284.3381 Fax 815.284.3385
 Design Firm # 184-00918
 www.willett-hofmann.com

| | | |
|--------------|------------|-------------|
| USER NAME = | DESIGNED - | REVISIONS - |
| PLOT SCALE = | DRAWN - | REVISIONS - |
| PLOT DATE = | CHECKED - | REVISIONS - |
| | DATE - | REVISIONS - |

BUREAU COUNTY
BRIDGE REPLACEMENT
FAS 188 (C.H. 8) OVER IAIS RAILROAD & THE HENNIPEN CANAL

WHA STD. 804 TYPICAL APPLICATION FOR ROAD CLOSURE

| | | | | |
|---|----------------|--------------------|--------------|-----------|
| F.A.S. RTE. | SECTION | COUNTY | TOTAL SHEETS | SHEET NO. |
| | 05-00195-00-BR | BUREAU | 127 | 127 |
| STA. | TO STA. | CONTRACT NO. 87380 | | |
| FED. ROAD DIST. NO. 7 ILLINOIS FED. AID PROJECT BRS-0188(118) | | | | |