

TRAFFIC DATA

STREET	ADT(2020)	%PV	%SU	%MU	CLASS	ROADWAY CLASSIFICATION
CROSAT STREET	2200	88	11	1	II	COLLECTOR
ELEVENTH STREET	10000	88	11	1	II	COLLECTOR

STATE OF ILLINOIS
DEPARTMENT OF TRANSPORTATION
DIVISION OF HIGHWAYS
PROPOSED
HIGHWAY PLANS

SURFACE TRANSPORTATION URBAN
CITY OF LASALLE
SECTION 08-00077-00-RS
PROJECT NO. M-5036(024)
JOB NO. C-93-102-09
ELEVENTH STREET (FAU 6086) &
CROSAT STREET (FAU 6109)
LASALLE COUNTY

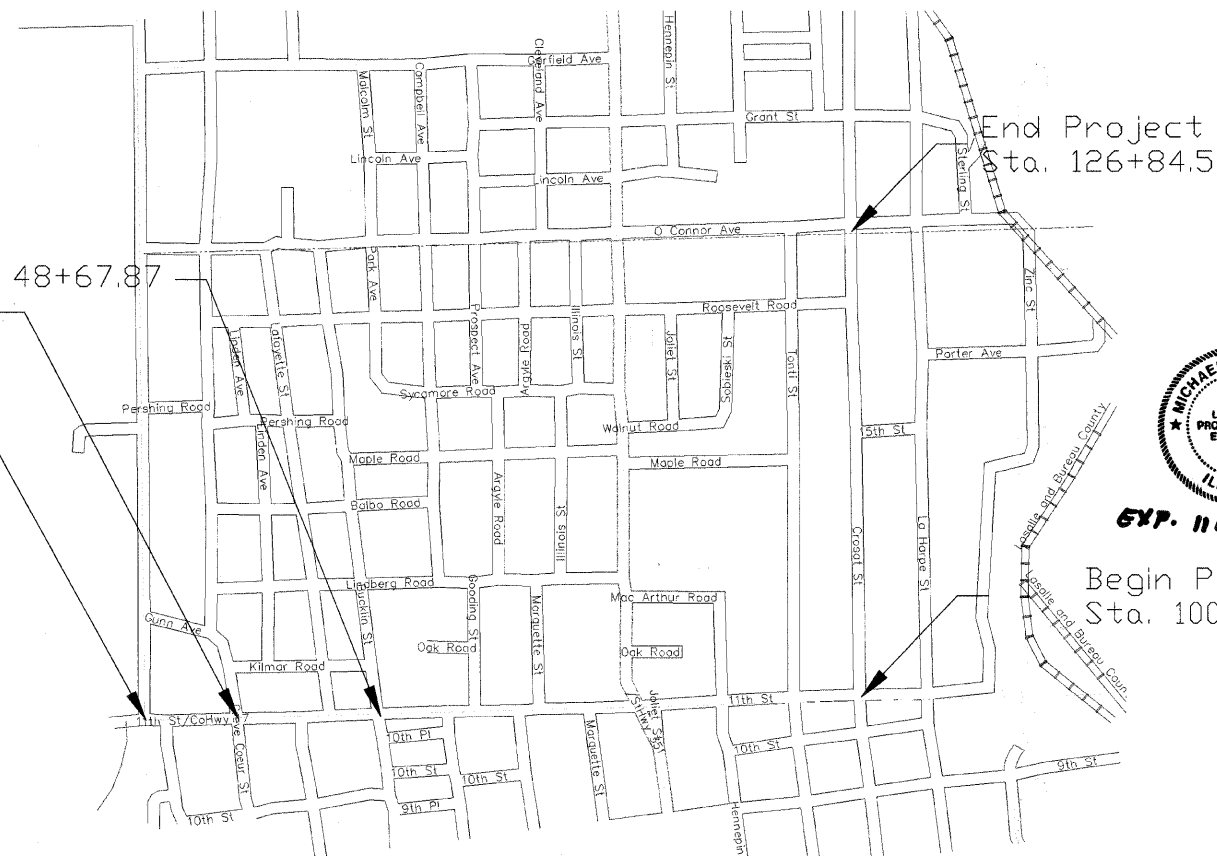
INDEX OF SHEETS

1	Cover Sheet and Index of Sheets
2	Typ. Sections and Summary of Quantities
3-5	Plan View Eleventh Street
6-9	Plan View Crosat Street

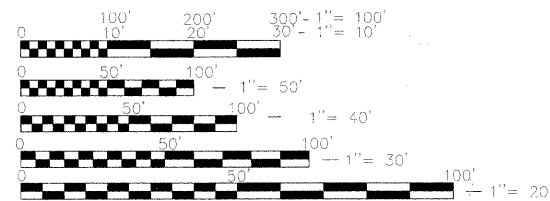
Highway Standards	
000001-05	Standard Symbols, Abbreviations, and Patterns
424001-05	Curb Ramps For Sidewalks
606001-04	Concrete Curb Type B and Concrete Curb and Gutter
701501-05	Urban Lane Closure, 2L, 2W, Undivided
701801-04	Lane Closure Multilane 1w or 2w crosswalk or sidewalk closure
701901-01	Traffic Control Devices
780001-02	Typical Pavement Markings



LOCATION MAP



End Project Sta. 48+67.87
Sta. 34+83.17 back = Sta. 40+00 ahead
Begin Project Sta. 30+00



FULL SIZE PLANS HAVE BEEN PREPARED USING STANDARD ENGINEERING SCALES. REDUCED SIZED PLANS WILL NOT CONFORM TO STANDARD SCALES. IN MAKING MEASUREMENTS ON REDUCED PLANS, THE ABOVE SCALES MAY BE USED.

J.U.L.I.F.
JOINT UTILITY LOCATION INFORMATION FOR EXCAVATION
1-800-892-0123 OR 811

PROJECT ENGINEER—Michael Furlan

CONTRACT NO. 87394

GROSS LENGTH = 4032 FT. = 0.764 MILE
NET LENGTH = 4032 FT. = 0.764 MILE
APPROXIMATE SCALE: 1" = 1000'



EXP. 11/30/2011

Begin Project
Sta. 100+03.4

STATE OF ILLINOIS
DEPARTMENT OF TRANSPORTATION
DIVISION OF HIGHWAYS

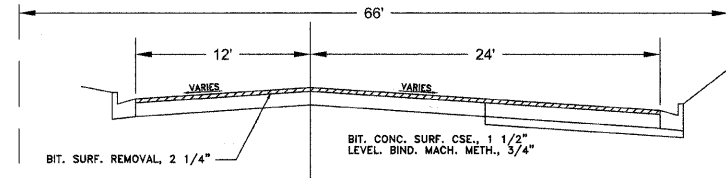
SUBMITTED APRIL 2 20 10
Michael J. Furlan
CITY ENGINEER

PASSED 4-5 20 10
[Signature]
DISTRICT 3 IMPLEMENTATION ENGINEER

4-5 20 10
[Signature]
DEPUTY DIRECTOR OF HIGHWAYS, REGION 2 ENGINEER
RELEASING FOR BID BASED ON LIMITED REVIEW.

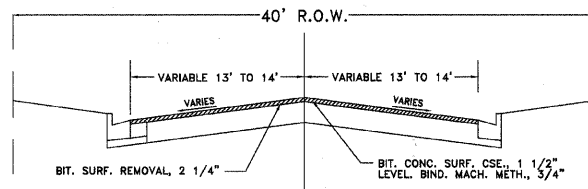
PRINTED BY THE AUTHORITY OF THE STATE OF ILLINOIS

TYPICALS, SUMMARY OF QUANTITIES AND SCHEDULES



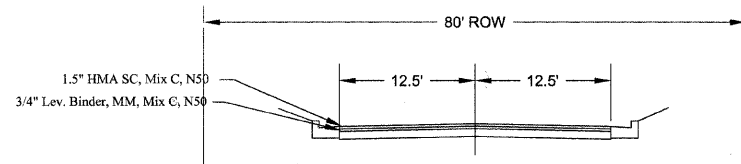
ELEVENTH STREET – TYP. SECTION
CHARTRES TO CREVE COEUR

(ROADWAY CONSISTS OF 2 LANES OF TRAFFIC WITH PAINTED MEDIAN/LEFT TURN LANE)
-- NO PARKING EITHER SIDE --

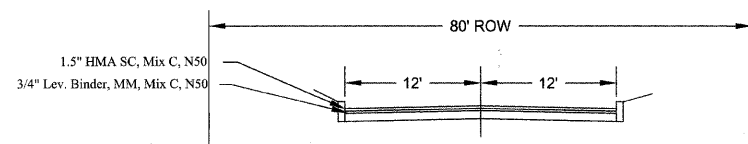


ELEVENTH STREET – TYP. SECTION

CREVE COEUR STREET TO BUCKLIN STREET



Crosat Street, 11th to 15th



Crosat Street, 15th to O'Conor Ave.

City of La Salle
Section 08-00077-00-RS
La Salle County
Contract No. 87394

	HMA Binder (Patches)	HMA Level Binder	HMA Surface
PG Grade	PG64-22	PG64-22	PG64-22
Design Air Voids	4.0% @N50	4.0% @N50	4.0% @N50
Mixture Composition	IL 19.0	IL 9.5	IL 12.5 or IL 9.5
Friction Aggregate			Mixture C
Density Test Method	Cores	Satisfaction of Engineer	Cores

SUMMARY OF QUANTITIES			Constructi on Type Code 1000
CODE NO.	DESCRIPTION	UNIT	TOTAL QUANTITY
40600100	BITUMINOUS MATERIALS (PRIME COAT)	GALLON	1333
40600300	AGGREGATE (PRIME COAT)	TON	133
40600625	LEVELING BINDER (MACHINE METHOD), N50	TON	600
40603310	HOT-MIX ASPHALT SURFACE COURSE, MIX "C", N50	TON	1200
42400100	PC CONC SIDEWALK 4	SQ FT	995
42400800	DETECTABLE WARNINGS	SQ FT	96
44000158	HOT-MIX ASPHALT SURFACE REMOVAL, 2 1/4"	SQ YD	13333
44000300	CURB REMOVAL	FOOT	55
44000600	SIDEWALK REMOVAL	SQ FT	995
60255500	MANHOLES TO BE ADJUSTED	EACH	20
60266600	VALVE BOXES TO BE ADJUSTED	EACH	11
60604400	COMB CC&G TB6.18	FOOT	55
67100100	MOBILIZATION	L SUM	1
* 70103700	TRAFFIC CONTROL COMPLETE	L SUM	1
△ 78000400	THPL PVT MK LINE 6	FOOT	3114
△ 78000600	THPL PVT MK LINE 12	FOOT	356

* SEE SPECIAL PROVISIONS

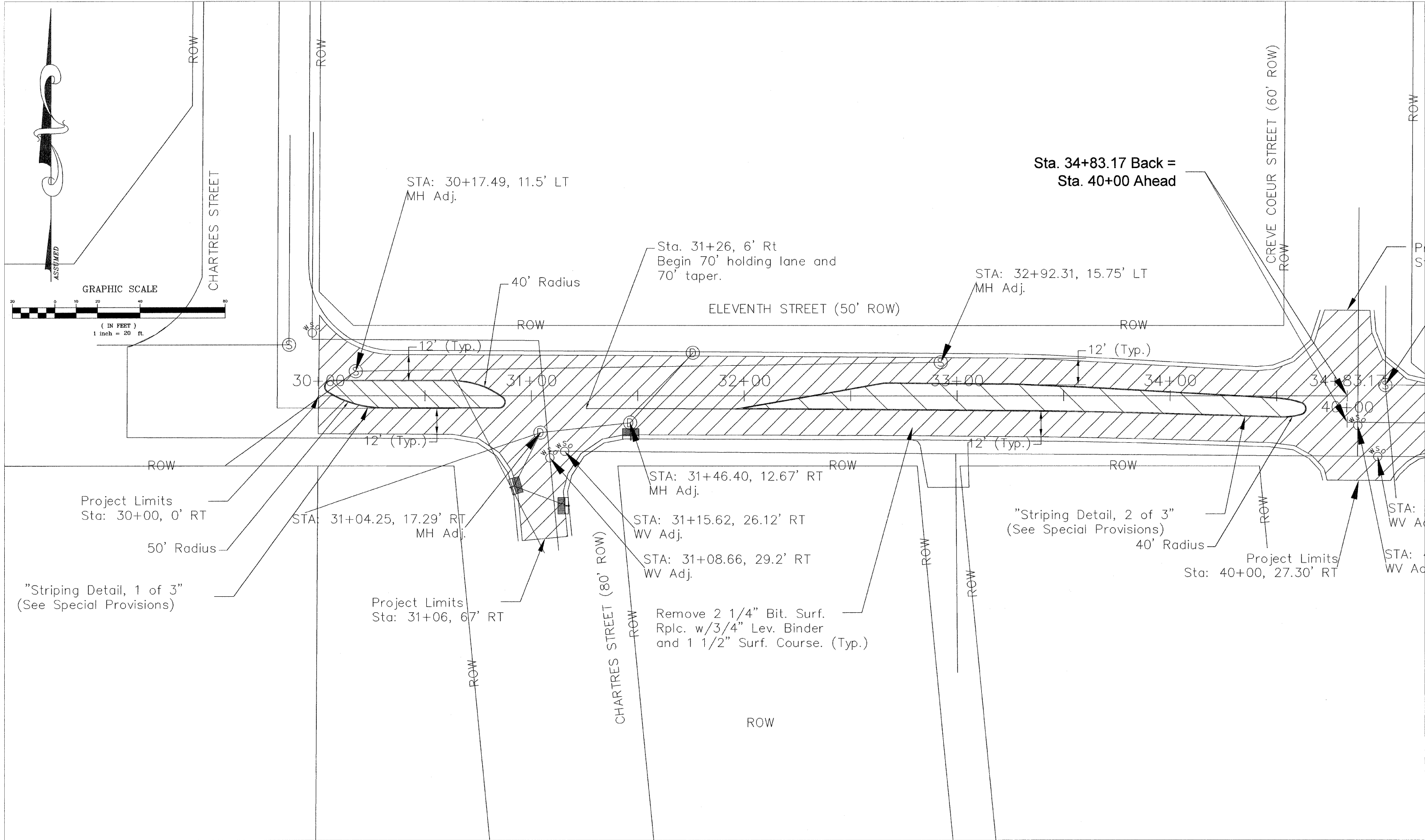
△ SPECIALTY ITEMS

SIDEWALK SCHEDULE			
Station	Sidewalk (sq. ft.)	B-6.18 CC&G (feet)	Detectabl e Warning (Each)
11th, Chartres to Bucklin			
43+66, RT	167	0	8
44+08, RT	166	0	8
47+80, RT	150	0	8
48+07, LT	100	15	8
Totals	583	15	32
Crosat, 11th to O'Conor			
100+35, LT	62	0	8
100+36, RT	25	0	8
100+78, RT	80	0	8
100+87, LT	40	0	8
115+31, RT	40	0	8
115+75, RT	50	0	8
122+15, LT	70	15	8
122+50, LT	45	25	8
Totals	412	40	64

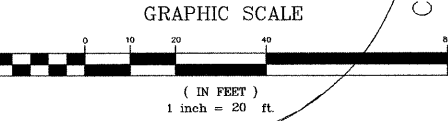
UTILITY ADJUSTMENTS			
Station	Location	MH Adj.	WV Adj.
11th, Chartres to Bucklin			
30+17.5	11.5 L	1	
31+08.7	29.2 R		1
31+15.6	26.1 R		1
31+46.4	12.7 R	1	
32+92.3	15.8 L	1	
40+05	1.5 R		1
40+14.5	16.0 R		1
40+17.8	17.6 L	1	
44+98.4	20.2 L	1	
47+51.3	1.5 R	1	
47+81.1	63.9 R	1	
48+02.6	19.0 L		1
48+07.6	2.7 L	1	
48+19.9	32.4 L	1	
48+44.0	16.4 L		1
TOTAL		9	6
Crosat, 11th to O'Conor			
100+60	6.8 L	1	
100+65.4	18.6 L		1
100+67.6	20.5 L		1
100+70.3	18.9 L		1
103+47.7	8.1 L	1	
105+23.3	3.2 L	1	
105+41.3	2.7 L	1	
106+47.6	0.3 R	1	
108+28.6	6.5 L	1	
110+40.0	6.6 L	1	
113+42.8	6.0 L	1	
115+31.6	12.1 R		1
115+68.3	11.4 R		1
115+79.1	6.5 L	1	
118+96.9	5.3 L	1	
122+35.2	5.3 L	1	
TOTAL		11	5

BITUMINOUS PAVEMENT SCHEDULE					
Station to Station	Bit. Con. LB, 0.75" (Tons)	Bit. Con. SC, 1.5" (Tons)	Bit. Mat. (Prime) (Gal.)	Agg. Prime Coat (Tons)	Pavement Removal (Sq. Yd.)
11th, Chartres to Bucklin					
30+00 - 34+83	99.9	199.8	222	22	2220
40+00 - 48+67	148.1	296.2	330	33	3298
	248	496	552	55	5518
Crosat, 11th to O'Conor					
100+00 - 116+06	210.8	421.7	468.5	46.9	4685
116+06 - 120+18	50.9	101.8	113.1	11.3	1131
120+18 - 122+50	37.8	75.6	84.0	8.4	840
122+50 - 126+84.5	52.2	104.3	115.9	11.6	1159
	351.7	703.4	781.5	78.2	7815

DRAWN BY: MJF	DATE: 2/15/10
CHECKED BY: MJF	DRAWING NO.:
JOB NO.: C-93-102-09	SHEET 2 OF 9



Sta. 34+83.17 Back =
Sta. 40+00 Ahead

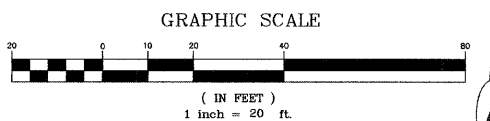


"Striping Detail, 1 of 3"
(See Special Provisions)

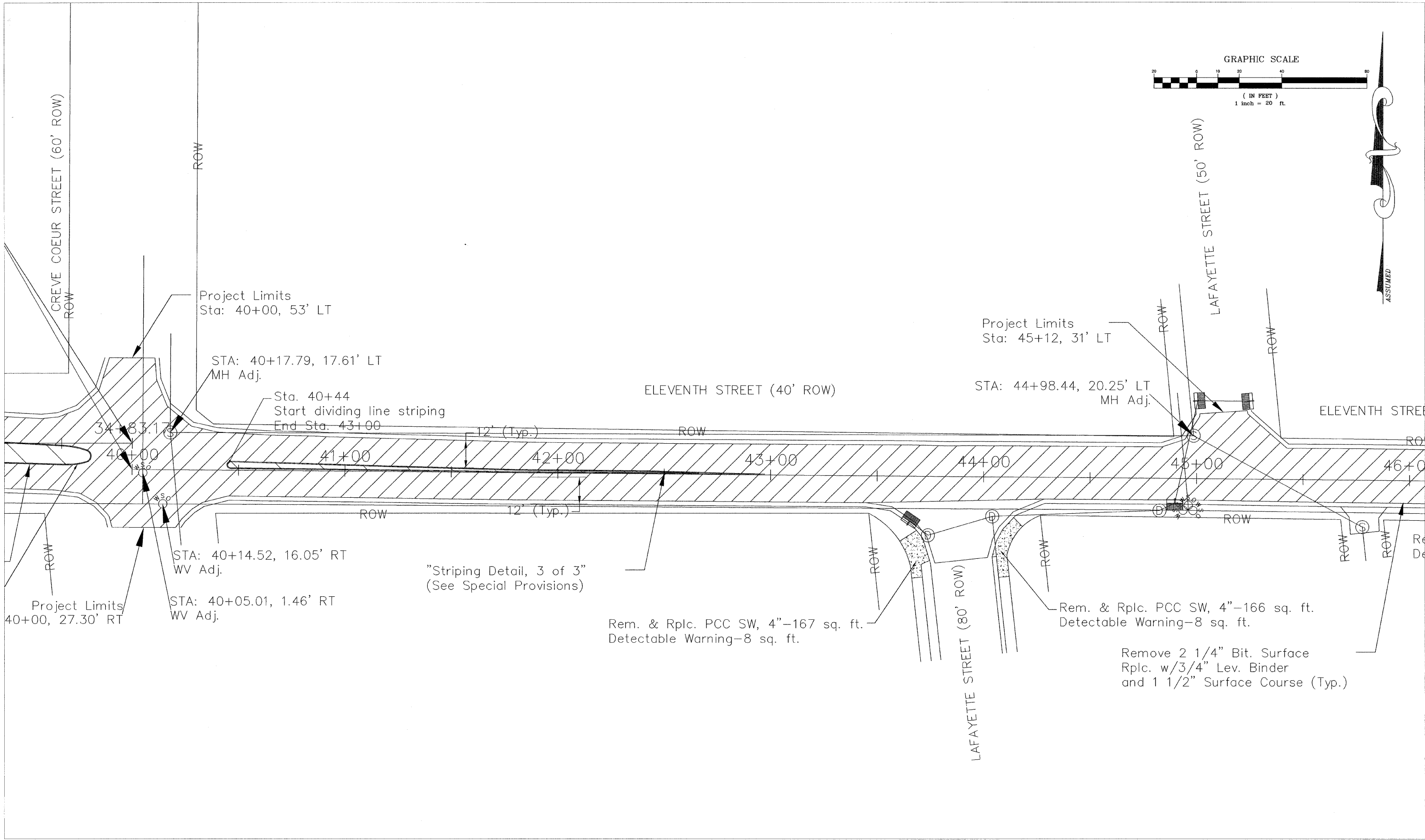
"Striping Detail, 2 of 3"
(See Special Provisions)

Remove 2 1/4" Bit. Surf.
Rplc. w/3/4" Lev. Binder
and 1 1/2" Surf. Course. (Typ.)

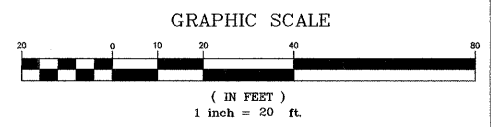
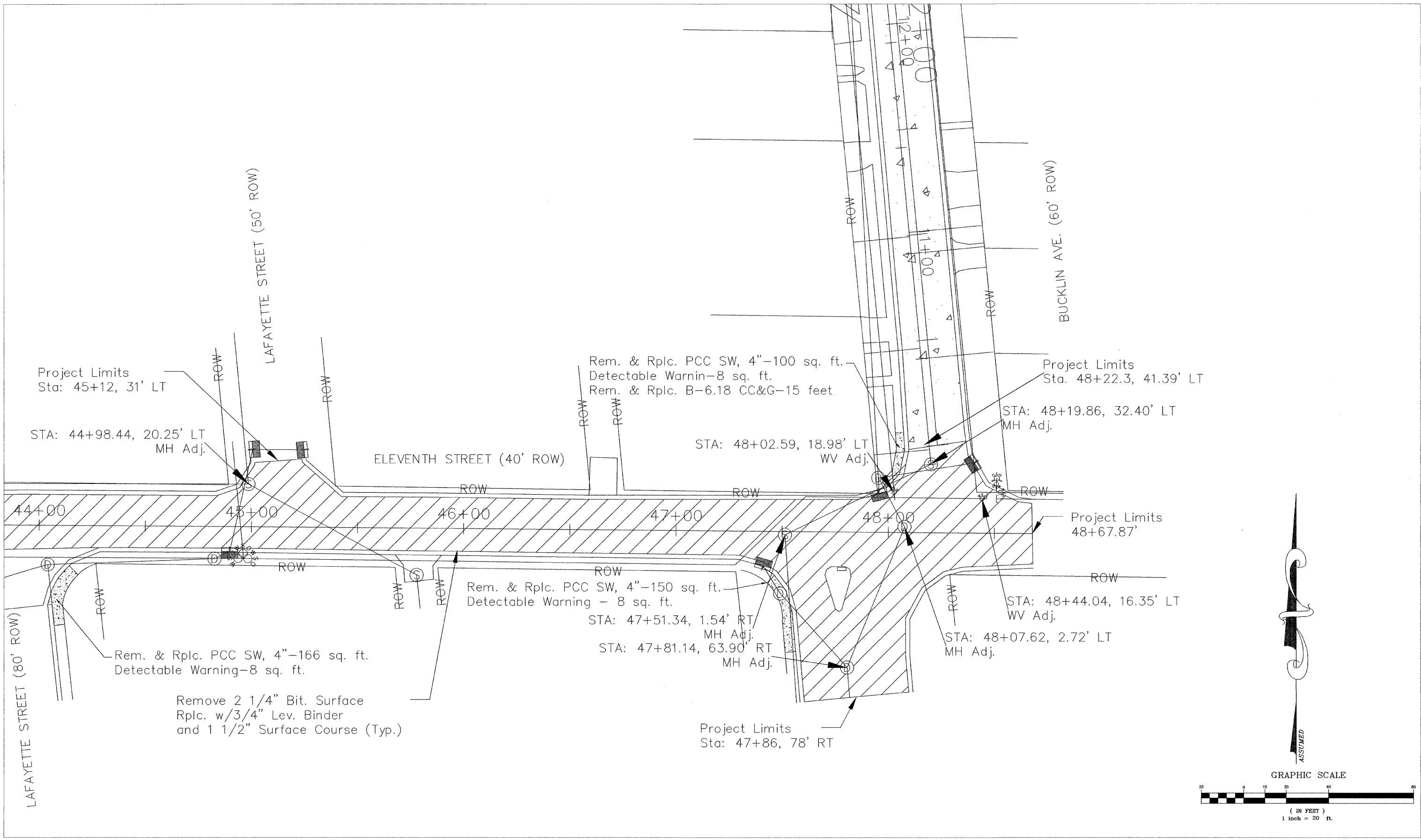
DRAWN BY: MJF	DATE: 2/19/2010
CHECKED BY: MJF	DRAWING NO.:
JOB NO.: C-93-102-09	SHEET 3 of 9



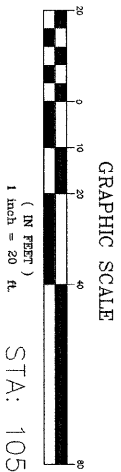
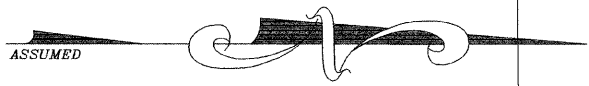
ASSUMED



DRAWN BY: MJF	DATE: 2/19/2010
CHECKED BY: MJF	DRAWING NO.:
JOB NO.: C-93-102-09	SHEET 4 OF 9



DRAWN BY: MJF	DATE: 2/19/2010
CHECKED BY: MJF	DRAWING NO.:
JOB NO.: C-93-102-09	SHEET 5 OF 9



63

STA: 105+41.3, 2.7' LT
MH Adj.

STA: 105+23.3, 3.2' LT
MH Adj.

106+00

58

STA: 106+47.6, 0.3 RT
MH Adj.

ROW

59

Remove 2 1/4" Bit. Surf.
Rplc. w/3/4" Level Binder Course
and 1 1/2" Surf. Crse. (Typ.)

60

STA: 103+47.7, 8.1' LT
MH Adj.

104+00

62

CROSAT STREET (80' ROW)

ROW

61

103+00

Rem. & Rplc. PCC SW, 4" - 40 sq. ft.
Detectable Warning - 8 sq. ft.

STA: 100+70.3, 18.9' LT
Adj. WW

STA: 100+67.6, 20.5' LT
Adj. WW

102+00

7

Rem. & Rplc. PCC SW, 4" - 80 sq. ft.
Detectable Warning - 8 sq. ft.

Project Limit
44.4' LT

STA: 100+65.4, 18.6' LT
Adj. WW

Project Limit
35.2' RT

STA: 100+60.6, 6.8' LT
Adj. MH

ROW

8

ELEVENTH STREET (80' ROW)

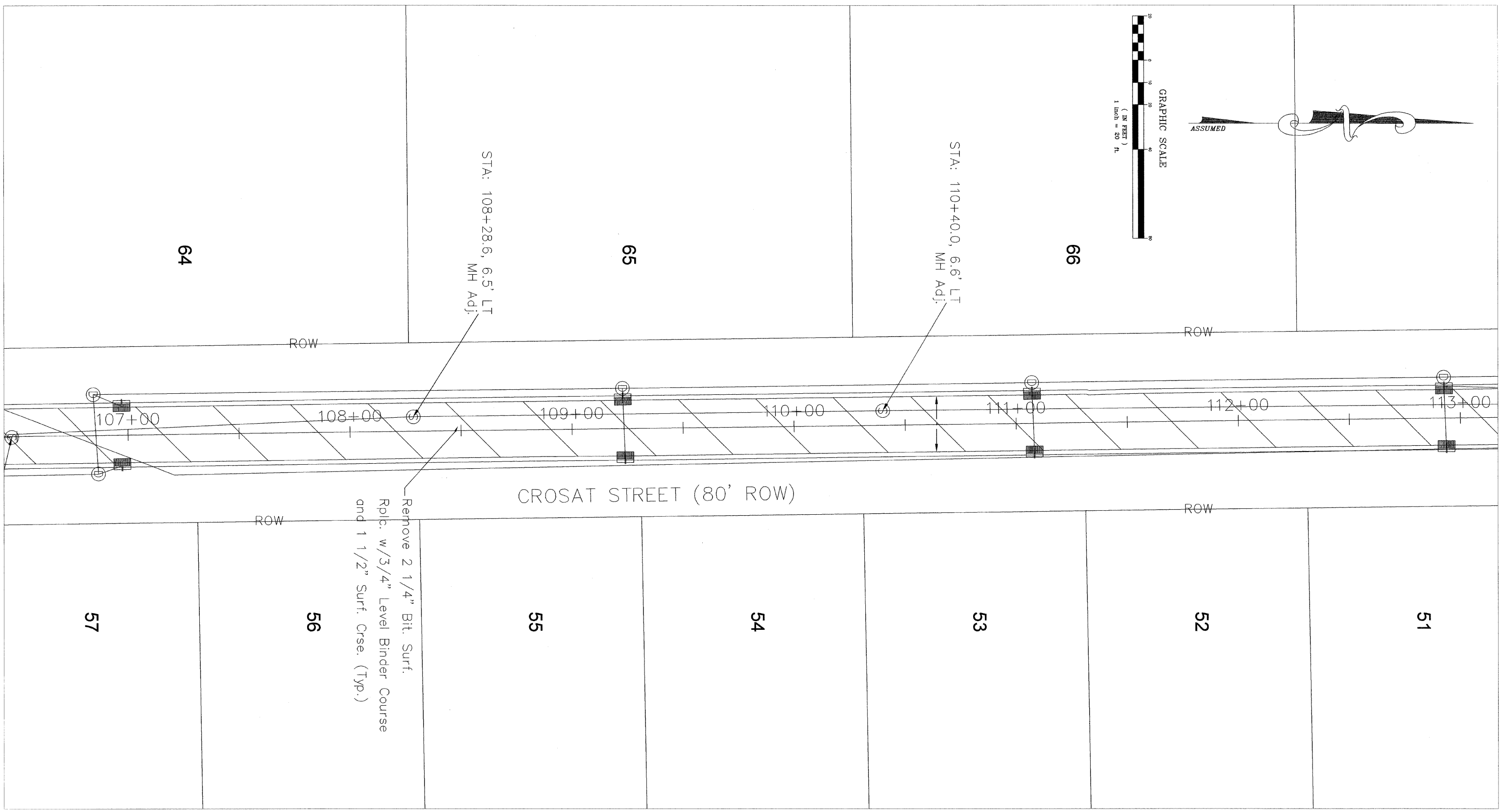
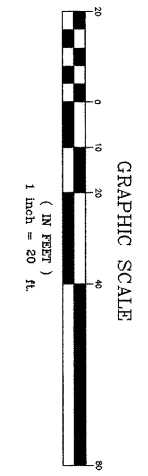
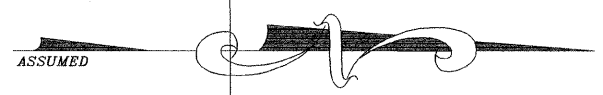
Rem. & Rplc. PCC SW, 4" - 62 sq. ft.
Detectable Warning - 8 sq. ft.

Start Project
100+03.4

29.2' f-f of curb.

ROW

DRAWN BY:	MJF	DATE:	2/15/10
CHECKED BY:	MJF	DRAWING NO.:	
JOB NO.:	C-93-102-09	SHEET	6 of 9

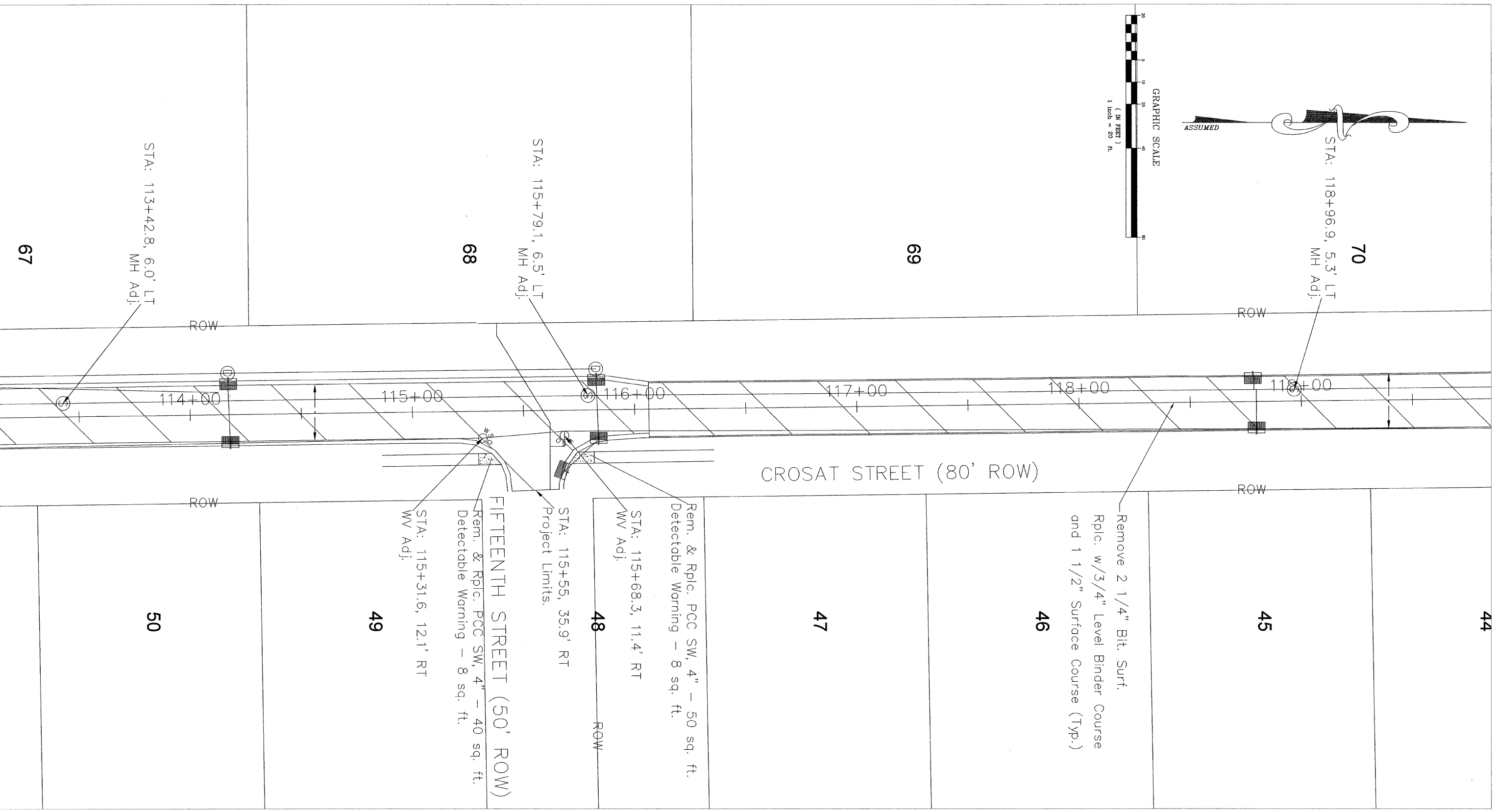
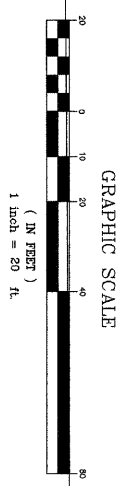


STA: 108+28.6, 6.5' LT
MH Adj.

STA: 110+40.0, 6.6' LT
MH Adj.

Remove 2 1/4" Bit. Surf.
Rplc. w/3/4" Level Binder Course
and 1 1/2" Surf. Crse. (Typ.)

DRAWN BY: MJF	DATE: 2/15/10
CHECKED BY: MJF	DRAWING NO.:
JOB NO.: C-93-102-09	SHEET 7 of 9



STA: 118+96.9, 5.3' LT
MH Adj.

69

STA: 115+79.1, 6.5' LT
MH Adj.

68

STA: 113+42.8, 6.0' LT
MH Adj.

67

CROSAT STREET (80' ROW)

FIFTEENTH STREET (50' ROW)

44

45

46

47

48

49

50

Remove 2 1/4" Bit. Surf.
Rplc. w/3/4" Level Binder Course
and 1 1/2" Surface Course (Typ.)

Rem. & Rplc. PCC SW, 4" - 50 sq. ft.
Detectable Warning - 8 sq. ft.

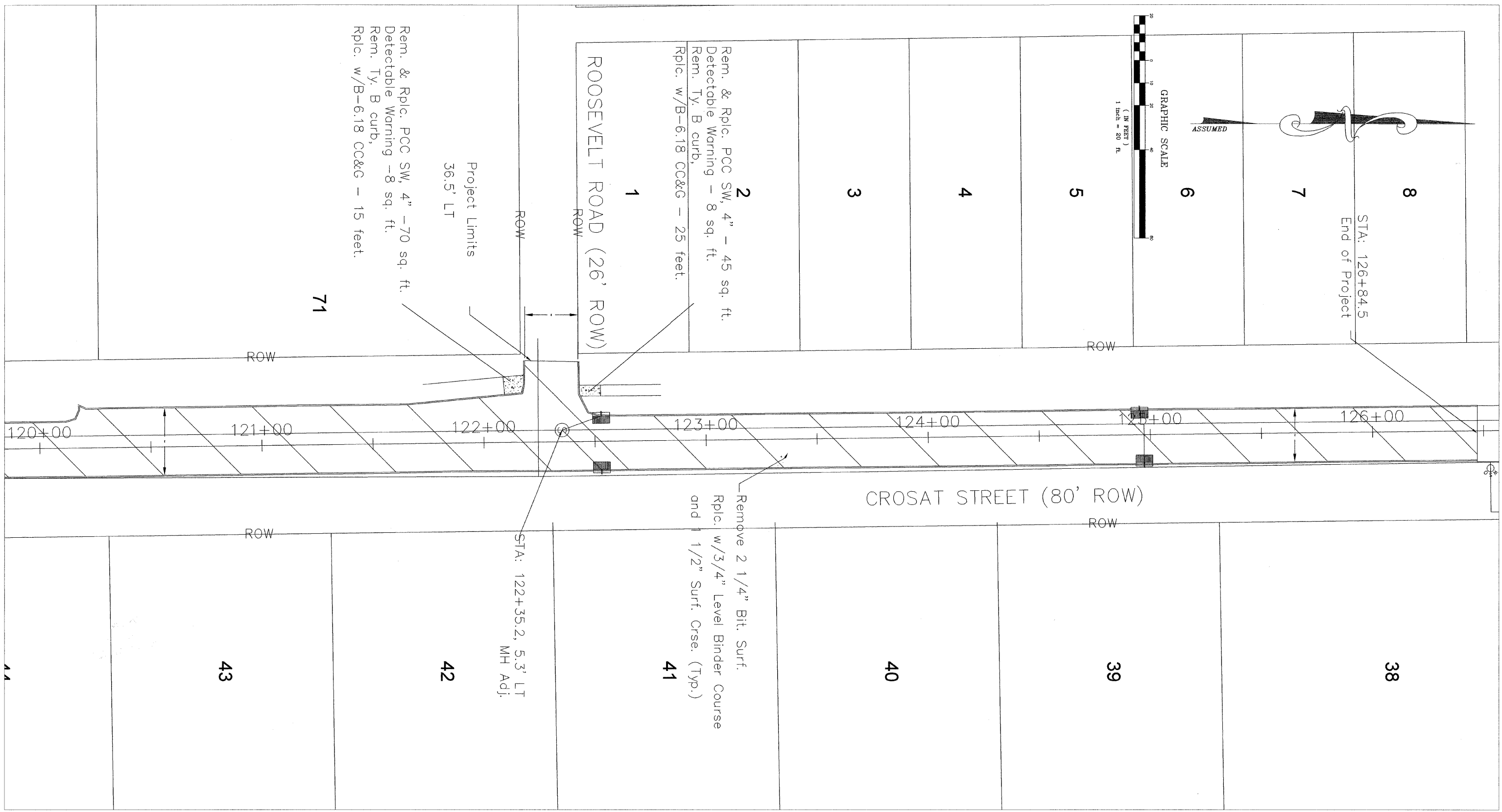
STA: 115+68.3, 11.4' RT
WV Adj.

STA: 115+55, 35.9' RT
Project Limits.

Rem. & Rplc. PCC SW, 4" - 40 sq. ft.
Detectable Warning - 8 sq. ft.

STA: 115+31.6, 12.1' RT
WV Adj.

DRAWN BY: M.J.F.	DATE: 2/15/10
CHECKED BY: M.J.F.	DRAWING NO.:
JOB NO.: C-93-102-09	SHEET 8 of 9



DRAWN BY: MJF	DATE: 2/15/10
CHECKED BY: MJF	DRAWING NO.:
JOB NO.: C-93-102-09	SHEET 9 of 9