

STATE OF ILLINOIS
DEPARTMENT OF TRANSPORTATION
DIVISION OF HIGHWAYS

**PROPOSED
HIGHWAY PLANS**

**SURFACE TRANSPORTATION URBAN PROGRAM
FAU ROUTE 6106 (BUCKLIN AVENUE)
SECTION 08-00076-00-RP
PROJECT NO.: M-5036 (023)
PAVEMENT RECONSTRUCTION
CITY OF LASALLE
LASALLE COUNTY
JOB NO.: C-93-103-09**

F. A. U. NO.	SECTION	COUNTY	TOTAL SHEETS	SHEET NO.
6106	08-00076-00-RP	LASALLE	10	1
STA.		TO STA.		
FED. ROAD DIST. NO. 3		ILLINOIS		FED. AID PROJECT M-5036(023)

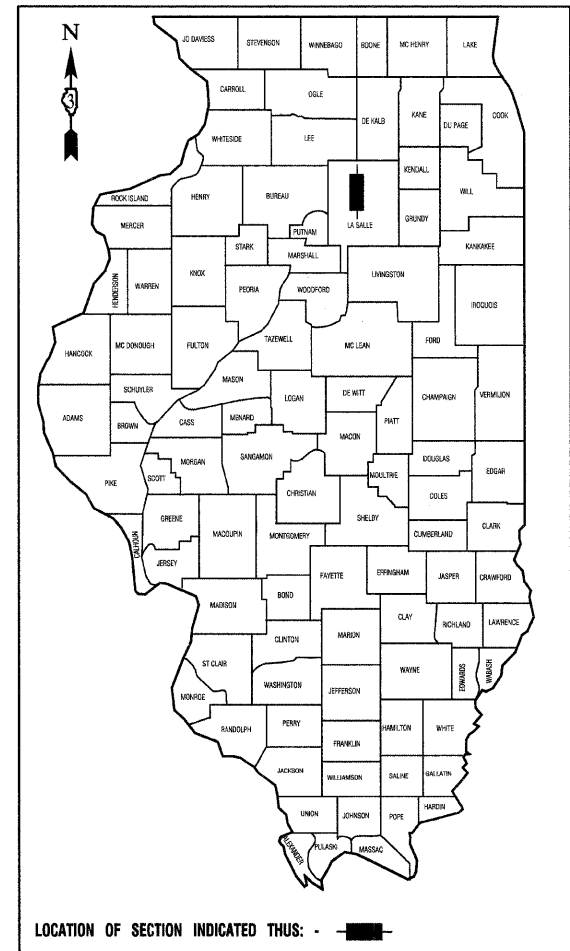
CONTRACT #87395

INDEX OF SHEETS

1. COVER SHEET
2. GENERAL NOTES & TYPICAL SECTIONS
3. SUMMARY OF QUANTITIES
- 4.-6. PLAN AND PROFILES
- 7.-9. INTERSECTION DETAILS
10. CONSTRUCTION DETAILS

HIGHWAY STANDARDS

- | | |
|-------------|---|
| 000001-05 | STANDARD SYMBOLS, ABBREVIATIONS, AND PATTERNS |
| 001001-02 | AREAS OF REINFORCEMENT BARS |
| 420001-07 | PAVEMENT JOINTS |
| 420101-04 | 24' (7.2m) JOINTED PCC PAVEMENT |
| 420111-02 | PCC PAVEMENT ROUNDOUTS |
| 424001-05 | CURB RAMPS FOR SIDEWALKS |
| 606001-04 | CONC. CURB TYPE B AND COMBINATION CONC. CURB AND GUTTER |
| 701501-05 | URBAN LANE CLOSURE, 2L, 2W, UNDIVIDED |
| 701801-04 | LANE CLOSURE MULTILANE 1W OR 2W CROSSWALK OR SIDEWALK CLOSURE |
| 701901-01 | TRAFFIC CONTROL DEVICES |
| B.L.R. 10-6 | PCC PAVEMENT SPECIAL (NONREINFORCED) |



FUNCTIONAL CLASSIFICATION
URBAN COLLECTOR
2030 ADT = 2,500
P.V. = 95.0% S.U. = 5.0% M.V. = 0.0%

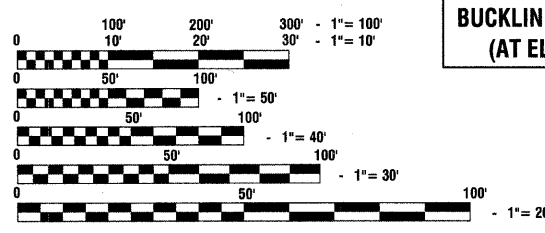
STATE OF ILLINOIS
DEPARTMENT OF TRANSPORTATION
DIVISION OF HIGHWAYS

SUBMITTED April 9 20 10
Michael J. Furlan
CITY ENGINEER

PASSED 4-9 20 10
[Signature]
DISTRICT 3 IMPLEMENTATION ENGINEER

RELEASING FOR BID BASED ON LIMITED REVIEW
4-9 20 10
[Signature]
DEPUTY DIRECTOR OF HIGHWAYS, REGION 2 ENGINEER

**PRINTED BY THE AUTHORITY
OF THE STATE OF ILLINOIS**

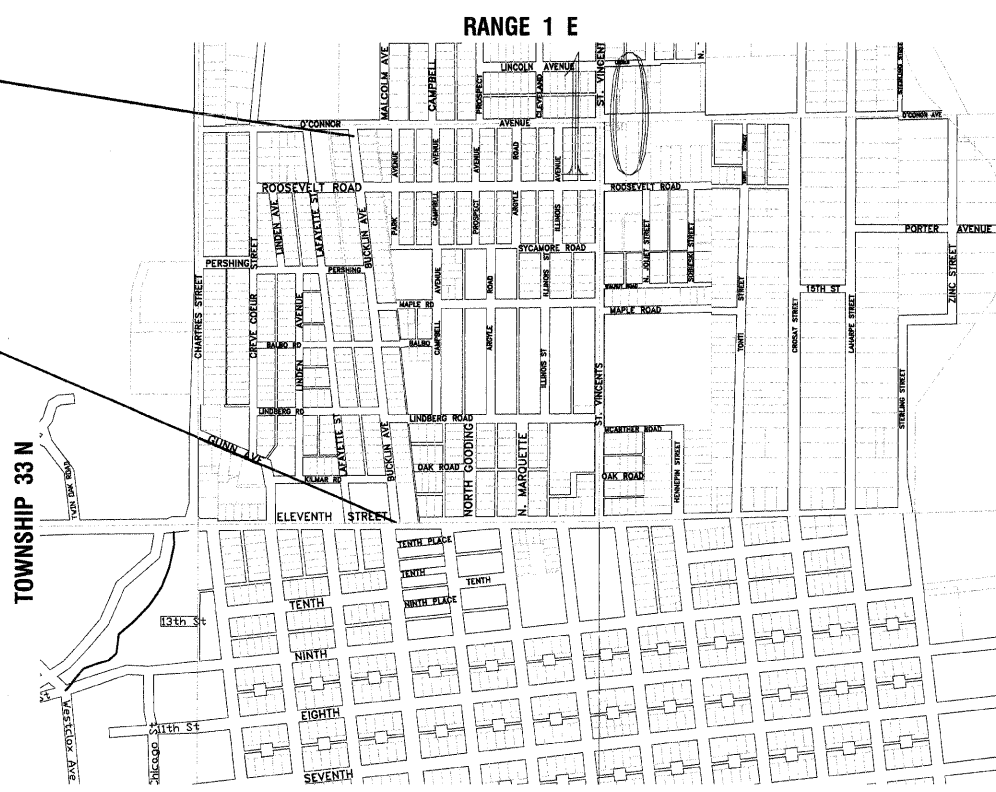


FULL SIZE PLANS HAVE BEEN PREPARED USING STANDARD ENGINEERING SCALES, REDUCED SIZED PLANS WILL NOT CONFORM TO STANDARD SCALES, IN MAKING MEASUREMENTS ON REDUCED PLANS, THE ABOVE SCALES MAY BE USED.

J. U. L. I. E.
JOINT UTILITY LOCATION INFORMATION FOR EXCAVATION
1-800-892-0123 or 811

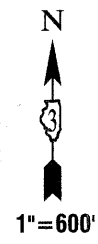
END IMPROVEMENTS
BUCKLIN AVENUE STA 41+62
(AT O'CONNOR AVENUE)

BEGIN IMPROVEMENTS
BUCKLIN AVENUE STA 16+46
(AT ELEVENTH STREET)



LOCATION MAP

GROSS LENGTH=2,523 FEET=0.48 MILES
NET LENGTH=2,523 FEET=0.48 MILES



PREPARED BY OR UNDER THE DIRECT SUPERVISION OF:

Michael J. Furlan
4/30/2010

I.D.O.T. FEDERAL AID DESIGN ENGINEER.
CONSULTANTS: ROBINSON ENGINEERING, LTD. 708-331-6700 10245-COVR-01 - COVER

CONTRACT NO. 87395