

MIN. BAR LAPS
 #5 _____ 1'-8"
 #6 _____ 2'-0"

SUPERSTRUCTURE BILL OF MATERIAL

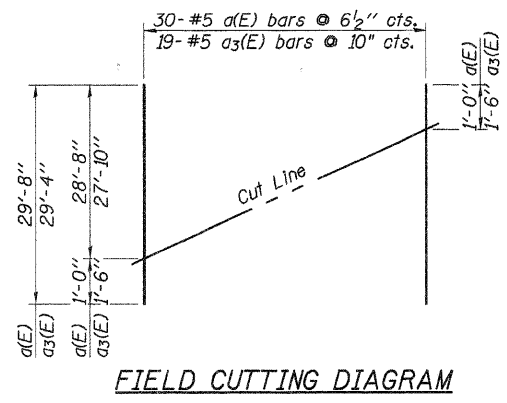
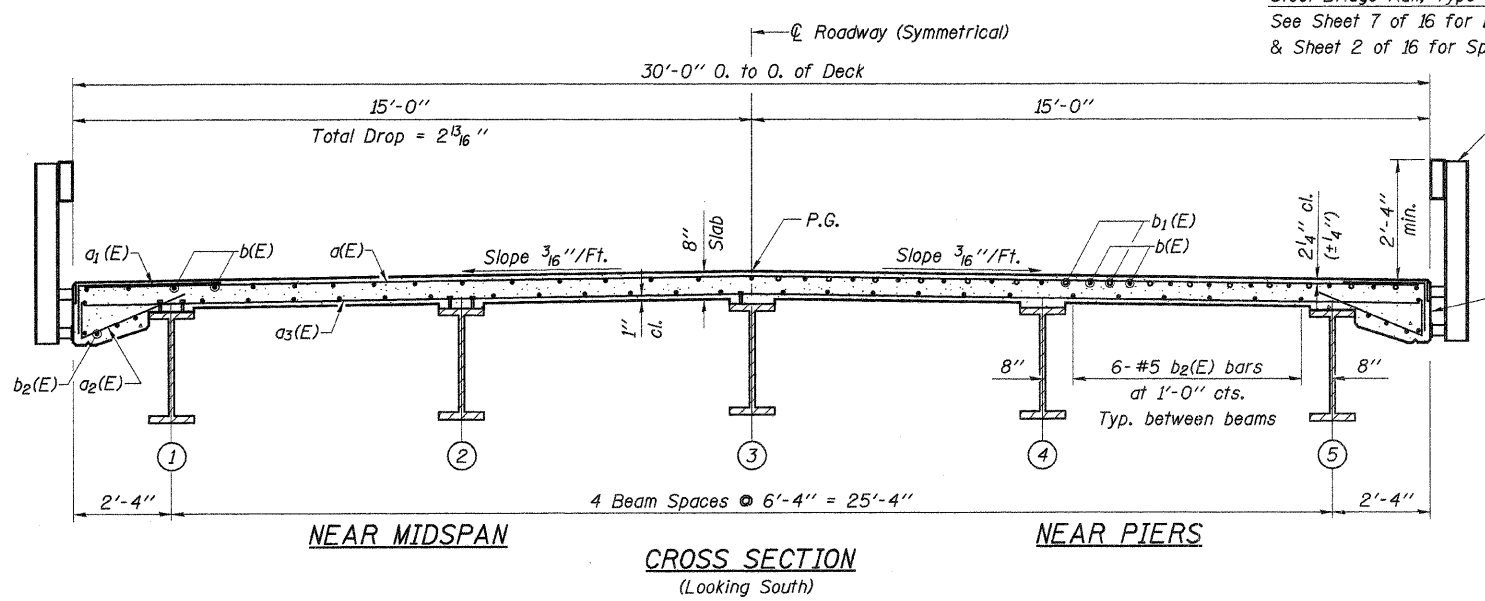
Bar	No.	Size	Length	Shape
a (E)	234	#5	29'-8"	—
a ₁ (E)	488	#6	6'-0"	—
a ₂ (E)	246	#5	4'-1"	—
a ₃ (E)	158	#5	29'-4"	—
a ₄ (E)	4	#5	34'-3"	—
b(E)	175	#5	28'-0"	—
b ₁ (E)	60	#6	27'-2"	—
b ₂ (E)	180	#5	23'-9"	—
m(E)	10	#6	34'-4"	—
m ₁ (E)	20	#6	9'-4"	—
m ₂ (E)	8	#6	6'-11"	—
m ₃ (E)	4	#6	2'-3"	—
s(E)	68	#5	5'-5"	—
s ₁ (E)	60	#4	8'-4"	—
Protective Coat		Sq. Yd.	488	
Conc. Superstructure		Cu. Yd.	128.9	
Reinforcement Bars, Epoxy Coated		Pound	31,290	
Bridge Deck Grooving		Sq. Yd.	414	

Reinforcement Bars designated (E) shall be epoxy coated.
 Bars indicated thus 31x5-#5 etc. indicates 31 lines of bars with 5 lengths per line.

*Order a(E) & a₃(E) bars full length. Cut to fit skew and use remainder of bars in opposite end of slab.

HALF PLAN

Steel Bridge Rail, Type S1
 See Sheet 7 of 16 for Details & Sheet 2 of 16 for Spacing.



FIELD CUTTING DIAGRAM

Note: Protective Coat shall also be applied to Deck Fascias.

DESIGNED -	A.R.K.
CHECKED -	A.L.S.
DRAWN -	S.A.P.
CHECKED -	A.R.K. & A.L.S.

Work this Sheet with Sheet 6 of 16.

SUPERSTRUCTURE SECTION 04-16101-02-BR MARTINTON ROAD DISTRICT IROQUOIS COUNTY STATION 38+50

4440 ASH GROVE SPRINGFIELD, IL 62711 (217) 793-8600 www.fehr-graham.com

FEHR-GRAHAM & ASSOCIATES, LLC
 ENGINEERING AND SCIENCE CONSULTANTS
 HONORABLE & SUCCESSFUL AS ASSOCIATES & ENGINEERS IN SPRINGFIELD, ILL.

JOB NO.: 48341
 FILE: SUPER.DGN
 DATE: 12/04/09