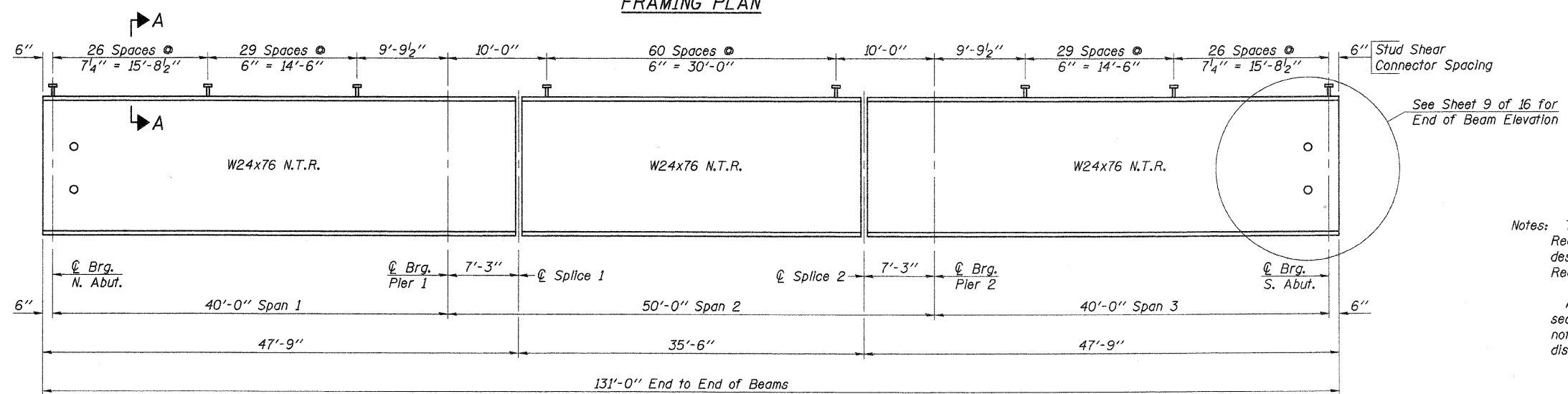


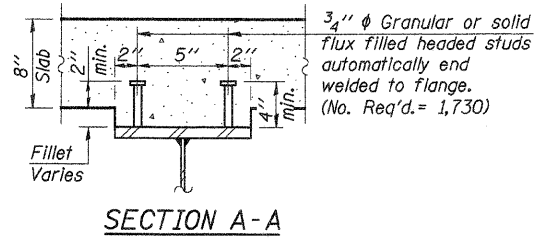
FRAMING PLAN



ELEVATION

TOP OF BEAM ELEVATIONS
(For Fabrication Only)

	Beam 1 or 5	Beam 2 or 4	Beam 3
⊘ Brg. N. Abut.	626.61	626.71	626.81
⊘ Brg. Pier #1	626.55	626.65	626.75
⊘ Splice #1	626.54	626.64	626.74
⊘ Splice #2	626.54	626.64	626.74
⊘ Brg. Pier #2	626.55	626.65	626.75
⊘ Brg. S. Abut.	626.61	626.71	626.81



Notes: The designation "N.T.R." indicates that Notch Toughness Requirements are applicable. Load carrying components designated "N.T.R." shall conform to the Supplemental Requirements for Notch Toughness, Zone 2.

All diaphragms shall be installed as steel is erected and secured with erection pins and bolts except as otherwise noted. Individual diaphragms at supports may be temporarily disconnected to install bearing anchor rods.

Work this sheet with sheet 9 & 10 of 16.

DESIGNED	A.R.K.
CHECKED	A.L.S.
DRAWN	S.A.P.
CHECKED	A.R.K. & A.L.S.

STRUCTURAL STEEL
SECTION 04-16101-02-BR
MARTINTON ROAD DISTRICT
IROQUOIS COUNTY
STATION 38+50

4440 ASH GROVE SPRINGFIELD, IL. 62711 (217) 793-8800 www.fehr-graham.com	FEHR-GRAHAM & ASSOCIATES, LLC ENGINEERING AND SCIENCE CONSULTANTS REGISTERED PROFESSIONAL ENGINEERS, ARCHITECTS, SURVEYORS, AND PLANNERS	JOB NO.: 48341 FILE: STEEL.DGN DATE: 12/04/09
---	---	---