

PILE DATA

Type: HP12x53
 No. Required: **14
 Nominal Required Bearing: 418 kips
 Factored Resistance Available: 209 kips
 Est. Length: 60 Foot/Pile

**Includes 1 Test Pile to be driven in a permanent location at Pier 2.

The steel H-piles shall be according to AASHTO M270, Grade 50.

The test piles shall be driven to 110 percent of the Nominal Required Bearing indicated above.

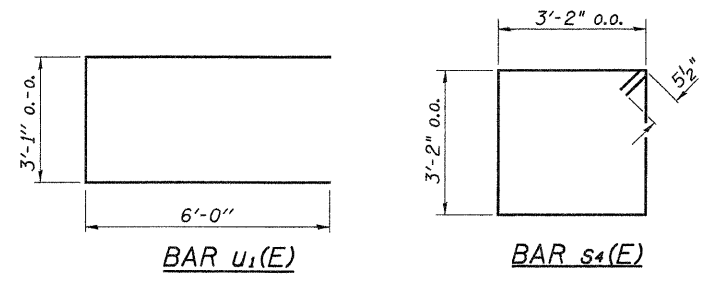
BILL OF MATERIAL - 2 PIERS

BAR	NO.	SIZE	LENGTH	SHAPE
$p_1(E)$	24	#7	37'-8"	—
$s_4(E)$	60	#5	13'-7"	□
$u_1(E)$	16	#6	15'-1"	□
Concrete Structures		Cu. Yd.	35.2	
Reinforcement Bars, Epoxy Coated		Pound	3,060	
Steel Piles HP12x53		Foot	780	
Driving Piles		Foot	780	
Test Pile, Steel HP12x53		Each	1	
Concrete Encasement		Cu. Yd.	52.6	
Underwater Structure Excavation Protection - Location 1		Each	1	
Underwater Structure Excavation Protection - Location 2		Each	1	

See Sheet 13 of 16 for Pile Details.

Reinforcement Bars designated (E) shall be epoxy coated.

DESIGNED	A.L.S.
CHECKED	A.R.K.
DRAWN	S.A.P.
CHECKED	A.R.K. & A.L.S.



PIERS

SECTION 04-16101-02-BR
MARTINTON ROAD DISTRICT
IROQUOIS COUNTY
STATION 38+50

4440 ASH GROVE SPRINGFIELD, IL 62711 (217) 793-8800 www.fehr-graham.com	FEHR-GRAHAM & ASSOCIATES, LLC ENGINEERING AND SCIENCE CONSULTANTS	JOB NO.: 48341 FILE: PIER-0.DGN DATE: 12/04/09
--	---	--