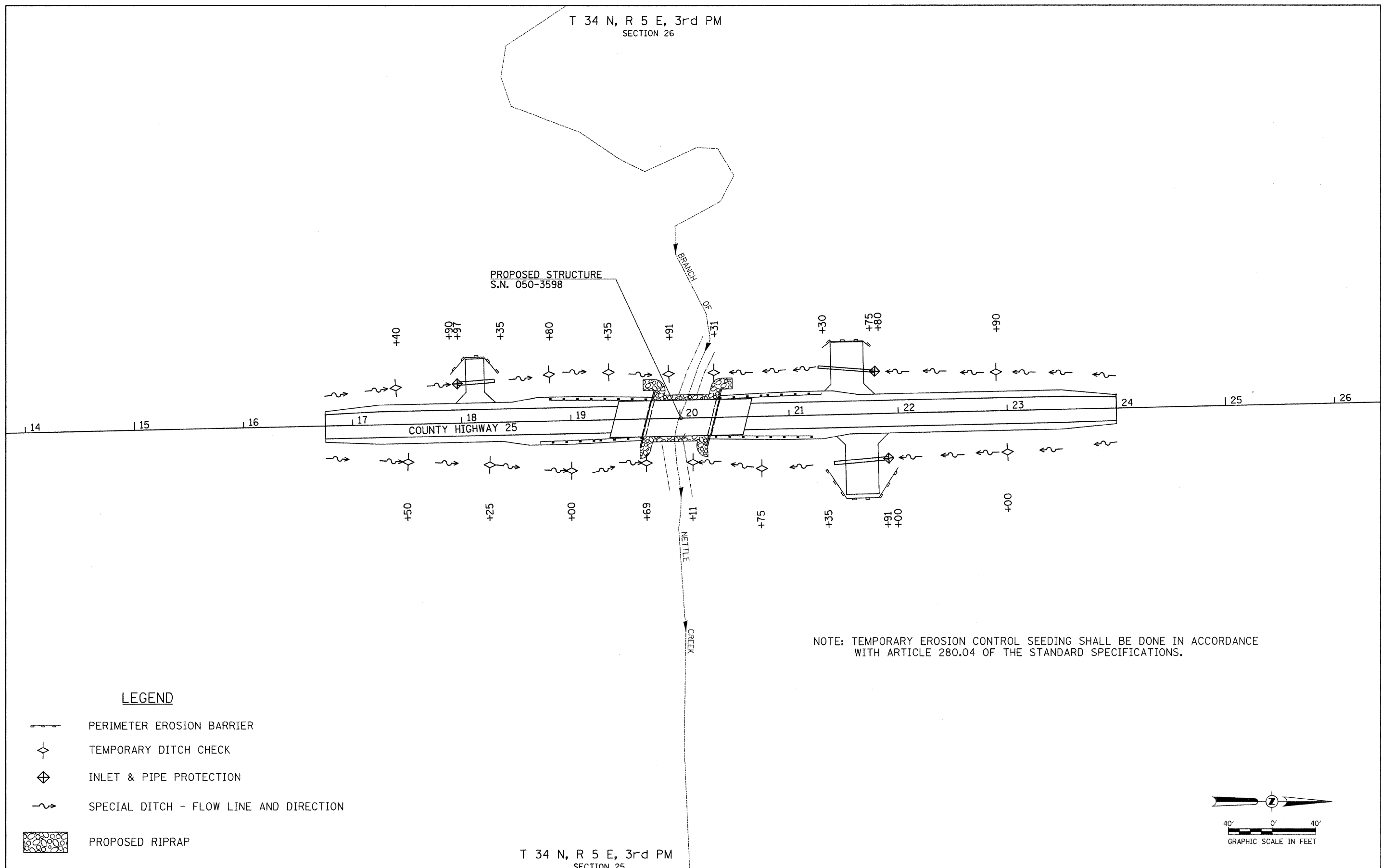


T 34 N, R 5 E, 3rd PM
SECTION 26








PROPOSED STRUCTURE
S.N. 050-3598

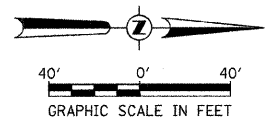
COUNTY HIGHWAY 25

BRANCH OF
NETTLE
CREEK

NOTE: TEMPORARY EROSION CONTROL SEEDING SHALL BE DONE IN ACCORDANCE WITH ARTICLE 280.04 OF THE STANDARD SPECIFICATIONS.

LEGEND

-  PERIMETER EROSION BARRIER
-  TEMPORARY DITCH CHECK
-  INLET & PIPE PROTECTION
-  SPECIAL DITCH - FLOW LINE AND DIRECTION
-  PROPOSED RIPRAP



T 34 N, R 5 E, 3rd PM
SECTION 25

FILE NAME = V:\Bridges\2655-Lasalle\2655S001.dgn	USER NAME = othomas	DESIGNED -	REVISED -	LASALLE COUNTY COUNTY HIGHWAY 25 OVER BRANCH OF NETTLE CREEK	STORM WATER POLLUTION PREVENTION PLAN	F.A.S. RTE. 271	SECTION 09-00658-00-BR	COUNTY LASALLE	TOTAL SHEETS 39	SHEET NO. 6
	PLOT SCALE = 40,0000' / IN.	CHECKED -	REVISED -			CONTRACT NO. 87451				
	PLOT DATE = 3/18/2010	DATE -	REVISED -			FED. ROAD DIST. NO. 7 ILLINOIS				
	SCALE: 1" = 40'-0"		SHEET NO. 1 OF 1 SHEETS			STA. 16+75.00 TO STA. 24+00.00		FED. AID PROJECT BRS-0271(03)		